
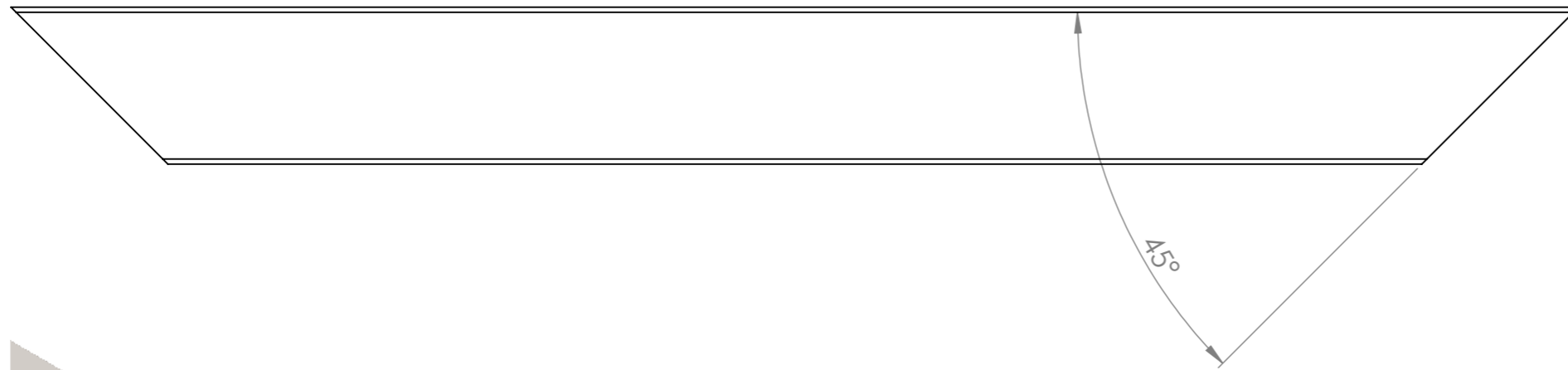
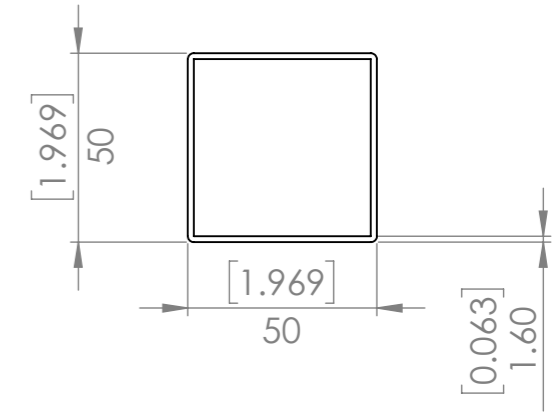
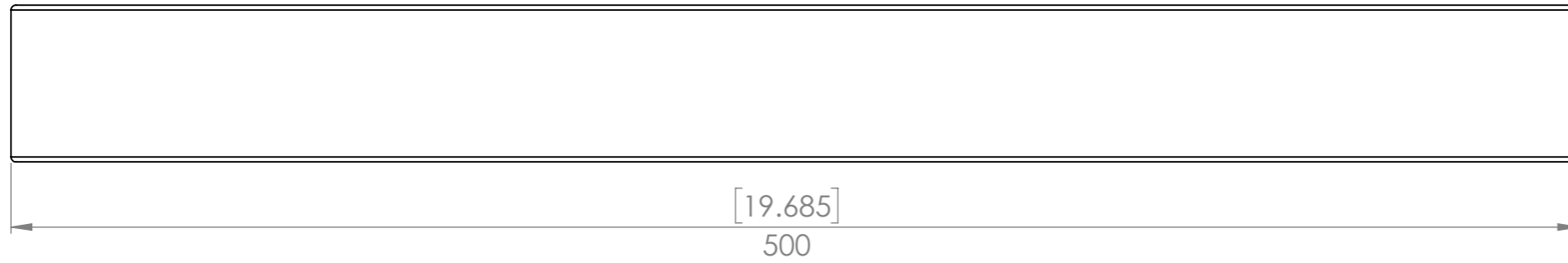


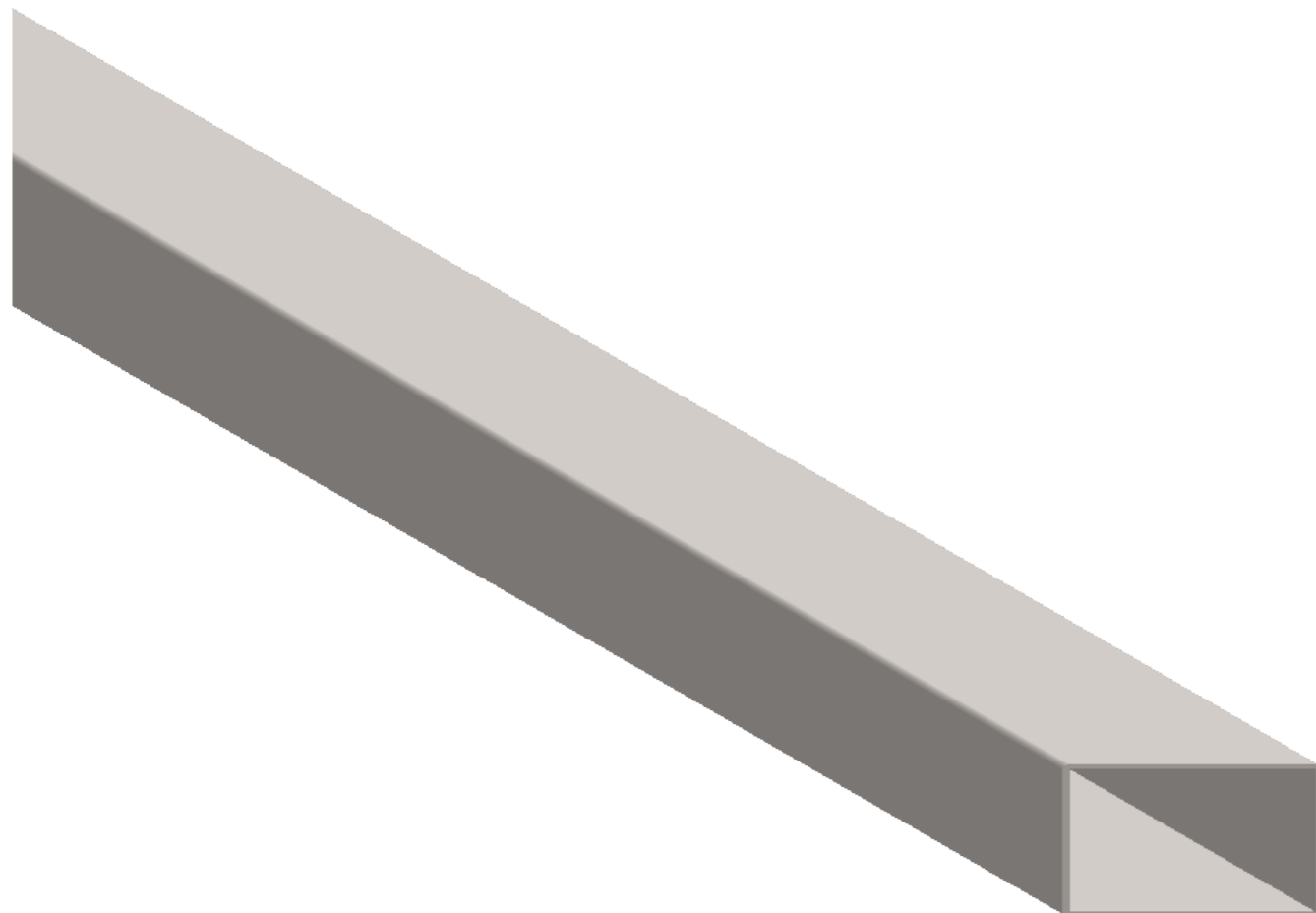



QTY.	PART NUMBER	DESCRIPTION	MATERIAL	WEIGHT
8	p0071-001	SHS Short Mitre	Plain Carbon Steel	1079.65
4	p0071-006	SHS Spacer	Plain Carbon Steel	119.96
2	p0071-003	SHS Long	Plain Carbon Steel	4678.49
6	p0071-007	Short Angle	Plain Carbon Steel	910.60
2	p0071-008	Long Angle	Plain Carbon Steel	4552.99
4	p0071-009	Castor Mount Plate	Plain Carbon Steel	189.39
2	p0071-004	Leg (Short)	Plain Carbon Steel	1679.44
2	p0071-005	Leg (Long)	Plain Carbon Steel	1919.36
4	p0071-010	Castor 100mm		
2	p0071-002	SHS Saw Drop Side	Plain Carbon Steel	1439.54

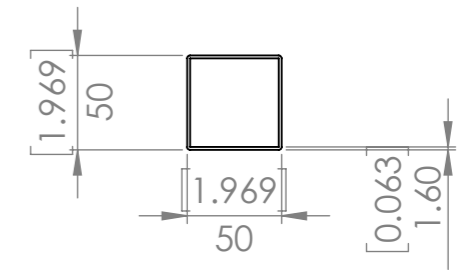
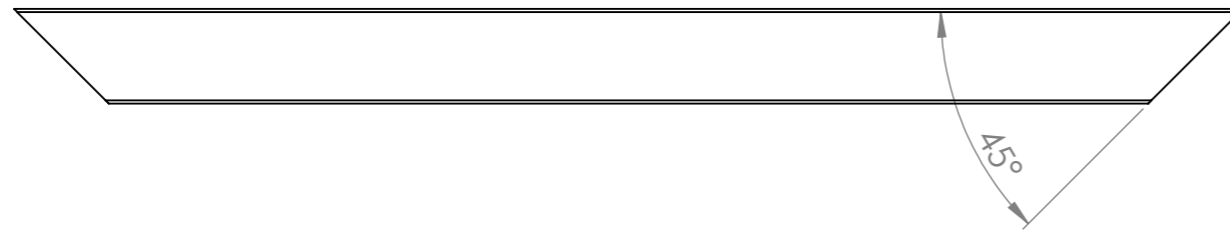
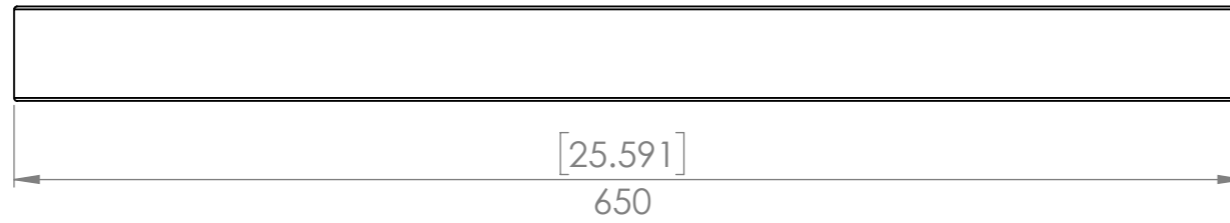
UNLESS OTHERWISE SPECIFIED: DIMENSIONS ARE IN MILLIMETERS		FINISH: Paint		DEBUR AND BREAK SHARP EDGES		DO NOT SCALE DRAWING		REVISION B	
TOLERANCES: LINEAR: +/- 1mm ANGULAR: +/- 1degree						Designed 2 Build Chop Saw Table			
	NAME	DATE				TITLE:			
DRAWN	Merlin	2017-01-03							
	NAME	DATE				DWG NO. p0071			
Q.A	Merlin	2017-04-23							
		Copyright (c)2017 Designed 2 Build All rights reserved. Permission is hereby granted to produce one item from these plans for personal use only.		MATERIAL:		SCALE:1:15		SHEET 1 OF 18	
				Assembly		WEIGHT: 44977.94		A3	



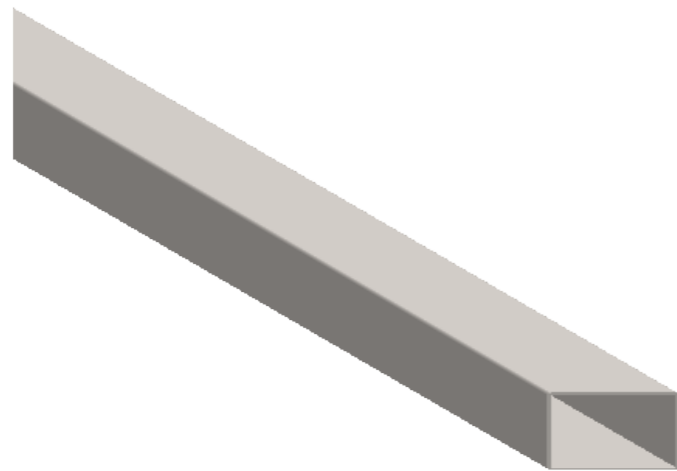
SHS 50mm x 50mm x 1.6mm wall
2" x 2" x 1/16" wall




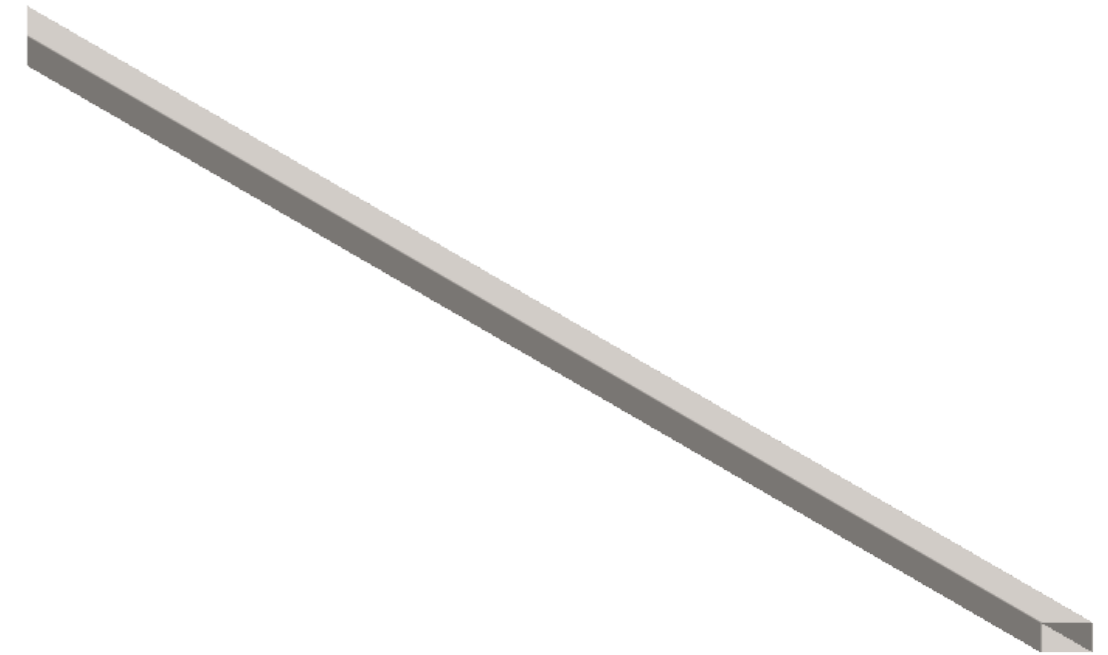
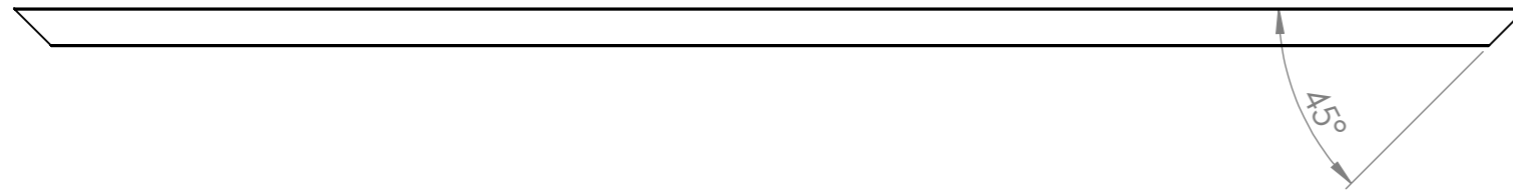
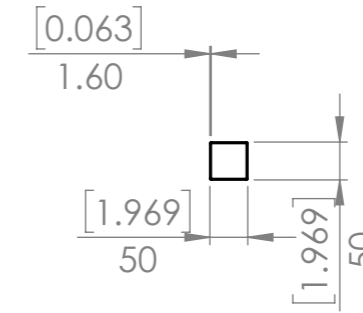
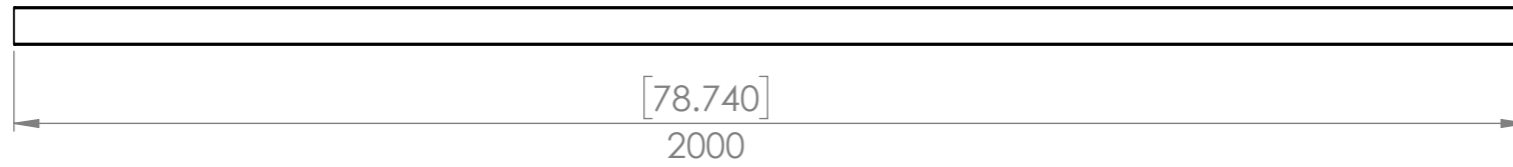
UNLESS OTHERWISE SPECIFIED: DIMENSIONS ARE IN MILLIMETERS		FINISH:		DEBUR AND BREAK SHARP EDGES		DO NOT SCALE DRAWING		REVISION A		
TOLERANCES: LINEAR: +/- 1mm ANGULAR: +/- 1degree						TITLE: Designed 2 Build SHS Short Mitre				
DRAWN	NAME Merlin	DATE 2017-01-03								
Q.A	NAME Merlin	DATE 2017-04-23								
		Copyright (c)2017 Designed 2 Build All rights reserved. Permission is hereby granted to produce one item from these plans for personal use only.		MATERIAL: Plain Carbon Steel		DWG NO. p0071-001		A3		
		WEIGHT: 1079.65		SCALE:1:2		SHEET 2 OF 18				




SHS 50mm x 50mm x 1.6mm wall
2" x 2" x 1/16" wall

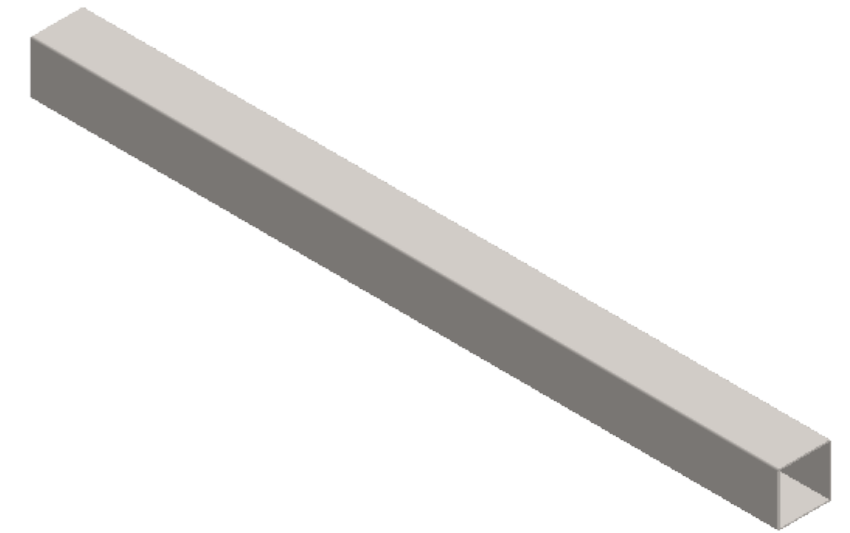
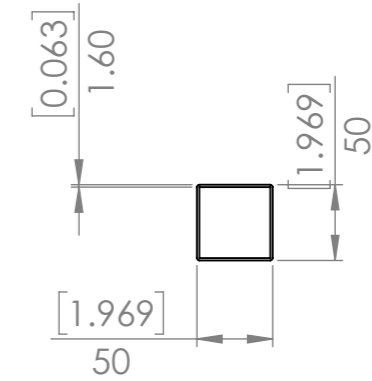
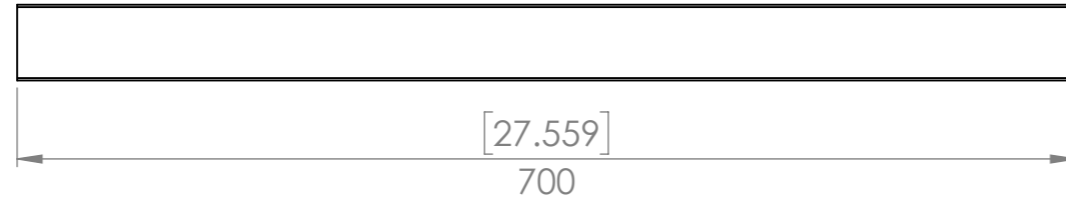


UNLESS OTHERWISE SPECIFIED: DIMENSIONS ARE IN MILLIMETERS		FINISH:		DEBUR AND BREAK SHARP EDGES		DO NOT SCALE DRAWING		REVISION A	
TOLERANCES: LINEAR: +/- 1mm ANGULAR: +/- 1degree						Designed 2 Build SHS Saw Drop Side			
	NAME	DATE						TITLE:	
DRAWN	Merlin	2017-01-03						DWG NO. p0071-002	
Q.A	Merlin	2017-04-23				MATERIAL: Plain Carbon Steel		SCALE: 1:4	
		Copyright (c)2017 Designed 2 Build All rights reserved. Permission is hereby granted to produce one item from these plans for personal use only.		WEIGHT: 1439.54		SHEET 3 OF 18			




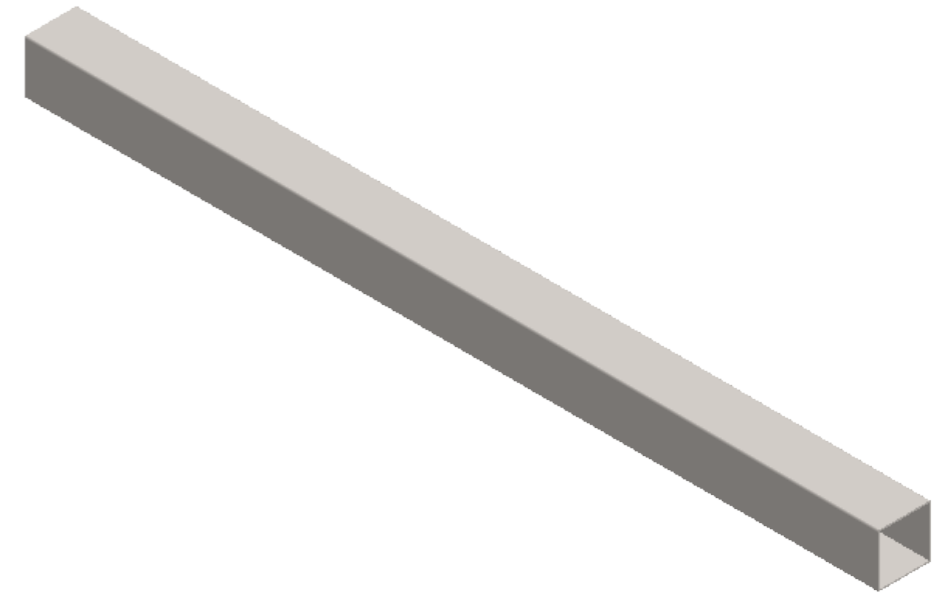
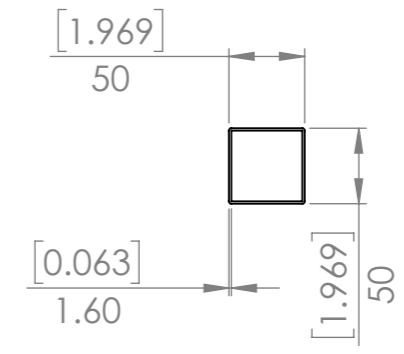
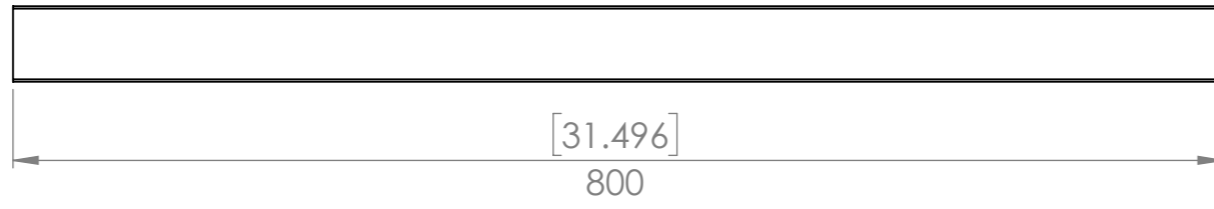
SHS 50mm x 50mm x 1.6mm wall
2" x 2" x 1/16" wall

UNLESS OTHERWISE SPECIFIED: DIMENSIONS ARE IN MILLIMETERS		FINISH:		DEBUR AND BREAK SHARP EDGES		DO NOT SCALE DRAWING		REVISION A	
TOLERANCES: LINEAR: +/- 1mm ANGULAR: +/- 1degree						Designed 2 Build			
DRAWN Merlin		DATE 2017-01-03				SHS Long			
Q.A Merlin		DATE 2017-04-23							
		Copyright (c)2017 Designed 2 Build All rights reserved. Permission is hereby granted to produce one item from these plans for personal use only.		MATERIAL: Plain Carbon Steel		DWG NO. p0071-003		A3	
				WEIGHT: 4678.49		SCALE:1:10		SHEET 4 OF 18	




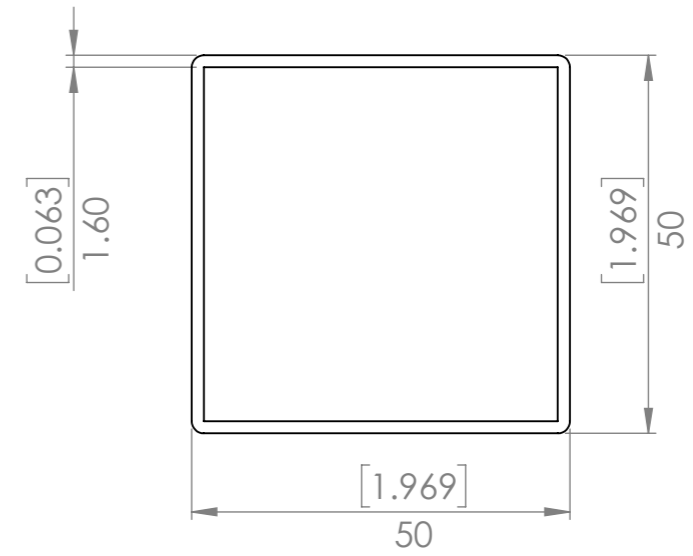
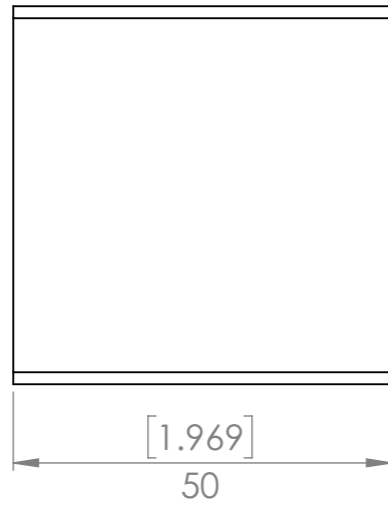
SHS 50mm x 50mm x 1.6mm wall
2" x 2" x 1/16" wall

UNLESS OTHERWISE SPECIFIED: DIMENSIONS ARE IN MILLIMETERS		FINISH:		DEBUR AND BREAK SHARP EDGES		DO NOT SCALE DRAWING		REVISION A	
TOLERANCES: LINEAR: +/- 1mm ANGULAR: +/- 1degree						TITLE: Designed 2 Build Leg (Short)			
DRAWN	NAME Merlin	DATE 2017-01-03						DWG NO. p0071-004	A3
Q.A	NAME Merlin	DATE 2017-04-23				MATERIAL: Plain Carbon Steel	SCALE:1:5	SHEET 5 OF 18	
		Copyright (c)2017 Designed 2 Build All rights reserved. Permission is hereby granted to produce one item from these plans for personal use only.			WEIGHT: 1679.44				

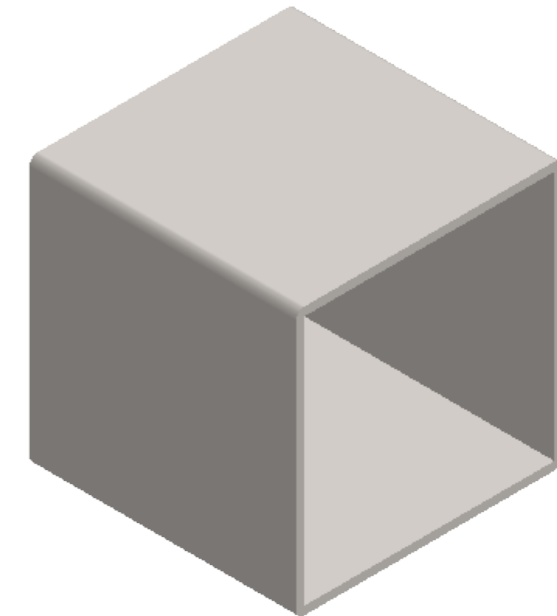
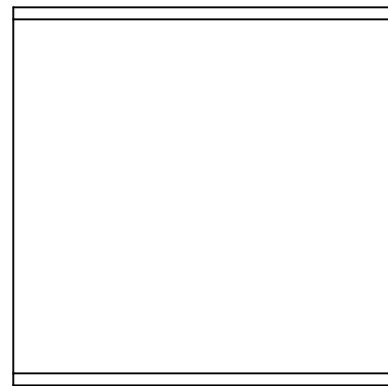



SHS 50mm x 50mm x 1.6mm wall
2" x 2" x 1/16" wall

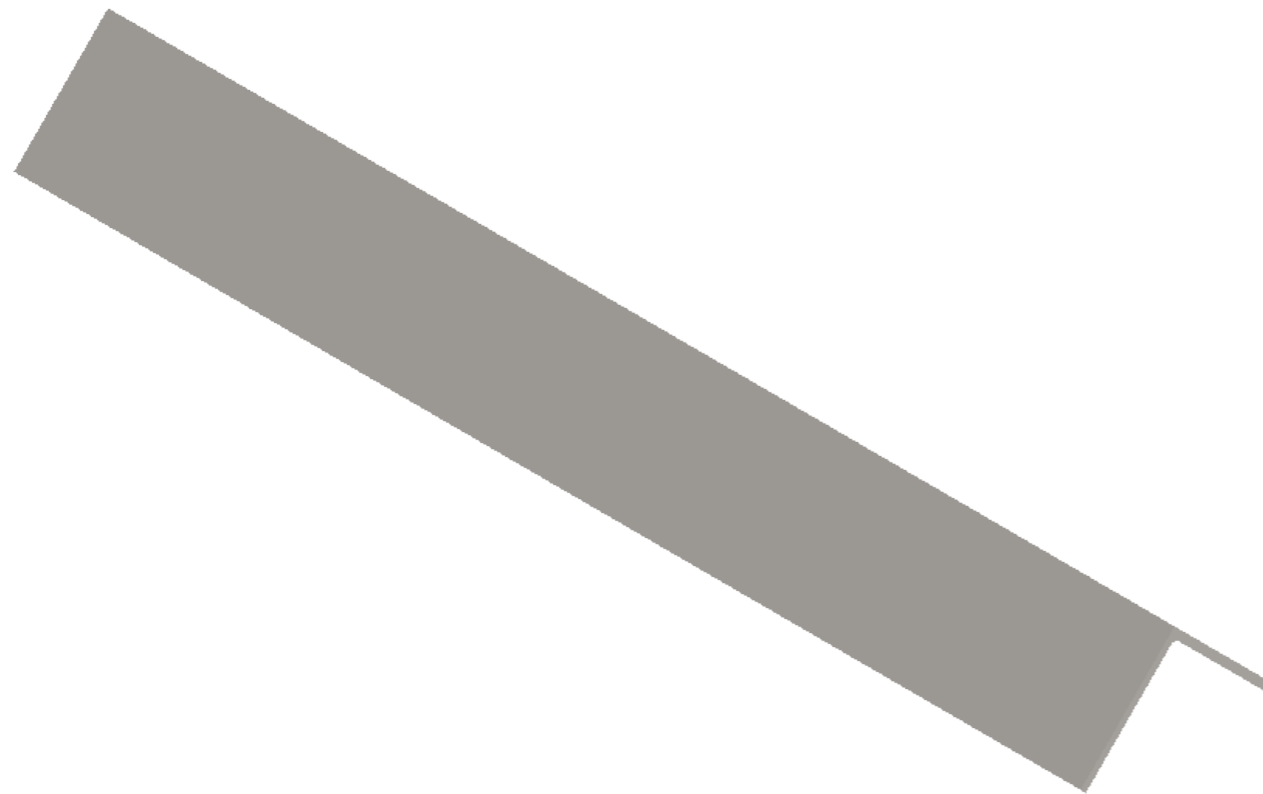
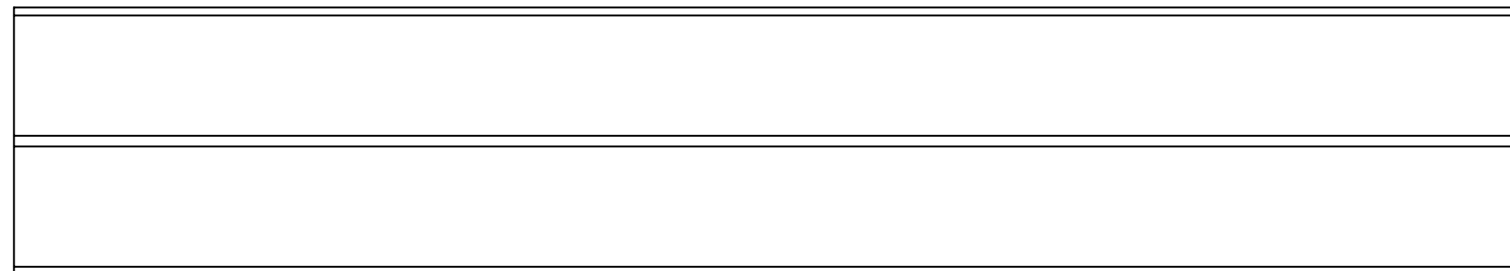
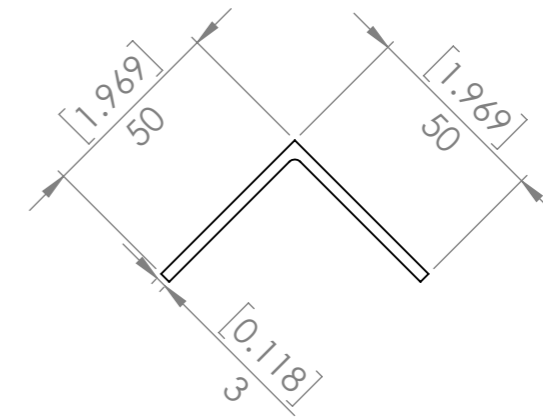
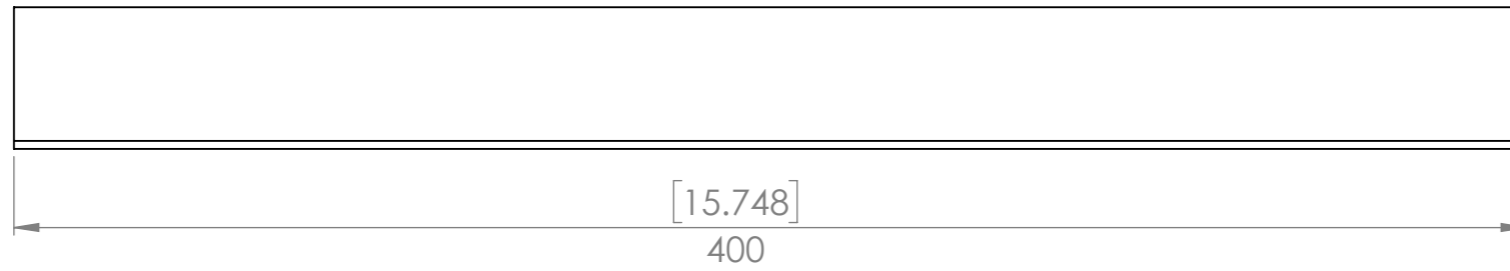
UNLESS OTHERWISE SPECIFIED: DIMENSIONS ARE IN MILLIMETERS		FINISH:		DEBUR AND BREAK SHARP EDGES		DO NOT SCALE DRAWING		REVISION A	
TOLERANCES: LINEAR: +/- 1mm ANGULAR: +/- 1degree						Designed 2 Build Leg (Long)			
NAME	DATE								
DRAWN Merlin	2017-01-03					TITLE:			
Q.A Merlin	2017-04-23					DWG NO.		p0071-005	
 Copyright (c)2017 Designed 2 Build All rights reserved. Permission is hereby granted to produce one item from these plans for personal use only.		MATERIAL:		Plain Carbon Steel		SCALE:1:5		SHEET 6 OF 18	
		WEIGHT: 1919.36							



SHS 50mm x 50mm x 1.6mm wall
2" x 2" x 1/16" wall

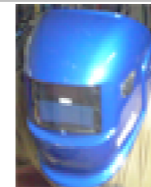


UNLESS OTHERWISE SPECIFIED: DIMENSIONS ARE IN MILLIMETERS		FINISH:		DEBUR AND BREAK SHARP EDGES		DO NOT SCALE DRAWING		REVISION A	
TOLERANCES: LINEAR: +/- 1mm ANGULAR: +/- 1degree						Designed 2 Build			
DRAWN		NAME		DATE		TITLE: SHS Spacer			
		Merlin		2017-01-03					
Q.A		NAME		DATE		DWG NO. p0071-006			
		Merlin		2017-04-23					
		Copyright (c)2017 Designed 2 Build All rights reserved. Permission is hereby granted to produce one item from these plans for personal use only.		MATERIAL:		SCALE:1:1		SHEET 7 OF 18	
				Plain Carbon Steel					
				WEIGHT: 119.96				A3	

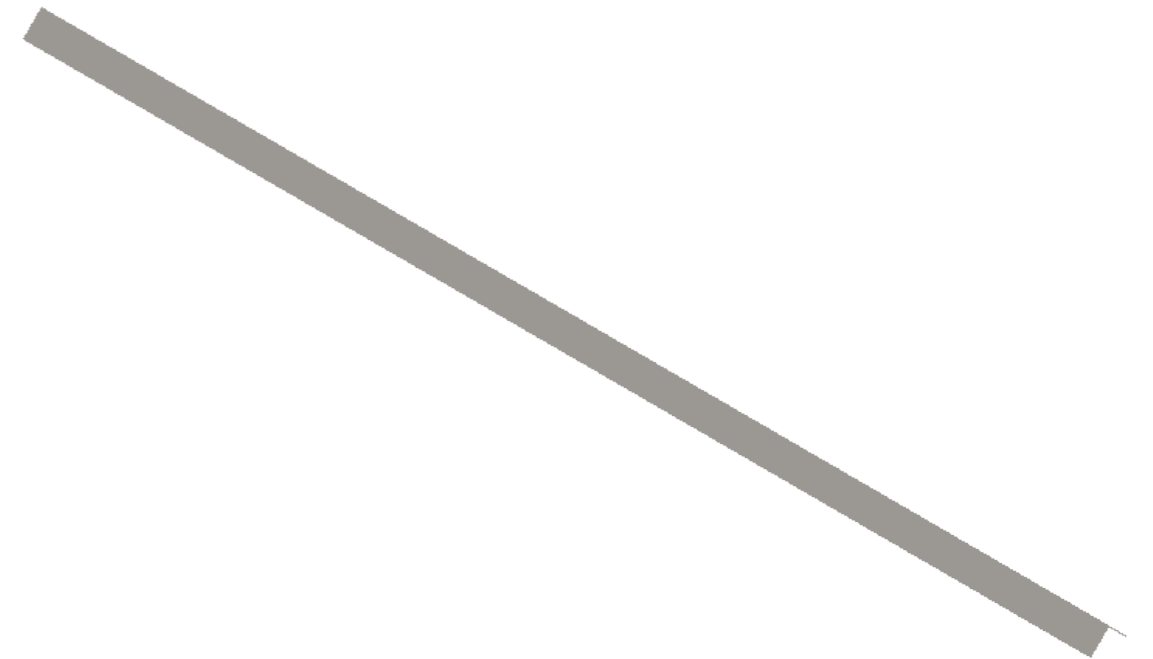
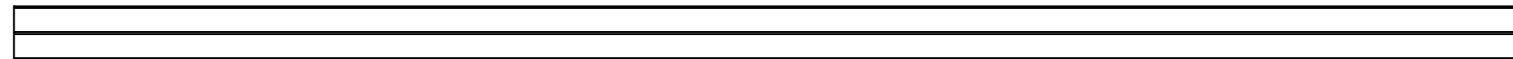
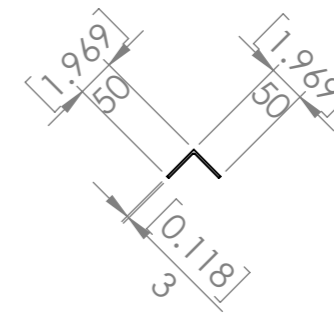
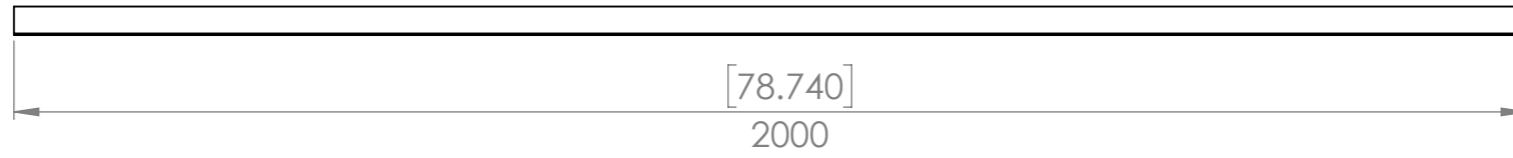


Angle 50mm x 50mm x 3mm
2" x 2" x 1/8"


UNLESS OTHERWISE SPECIFIED: DIMENSIONS ARE IN MILLIMETERS		FINISH:		DEBUR AND BREAK SHARP EDGES		DO NOT SCALE DRAWING		REVISION		A	
TOLERANCES: LINEAR: +/- 1mm ANGULAR: +/- 1degree										Designed 2 Build	
		NAME		DATE						TITLE:	
DRAWN		Merlin		2017-01-03						Short Angle	
Q.A		Merlin		2017-04-23							
										DWG NO.	
						MATERIAL:		p0071-007		A3	
						Plain Carbon Steel					
						WEIGHT: 910.60		SCALE:1:2		SHEET 8 OF 18	

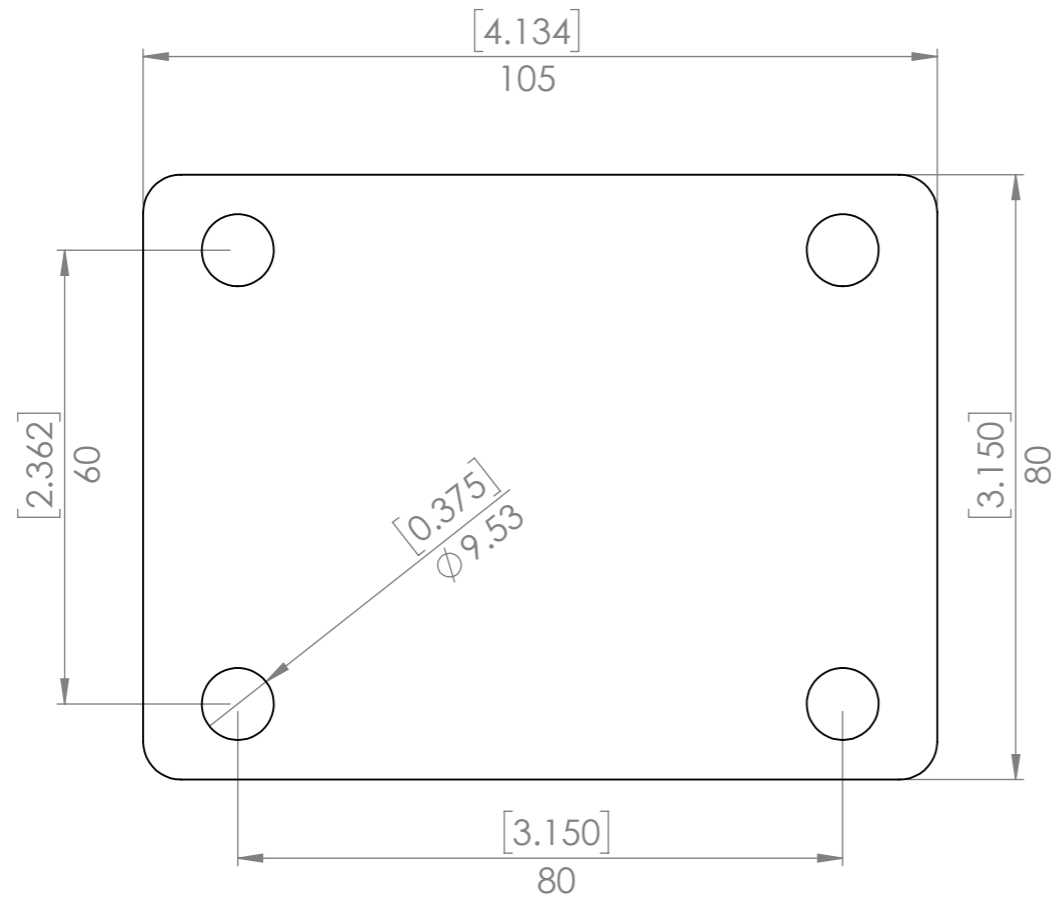
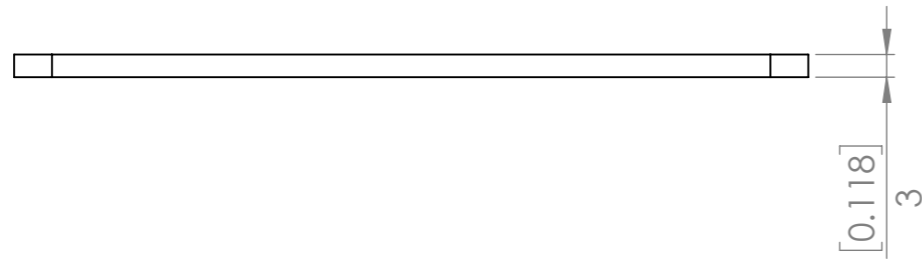


Copyright (c)2017
Designed 2 Build
All rights reserved.
Permission is hereby
granted to produce
one item from these
plans for personal use
only.

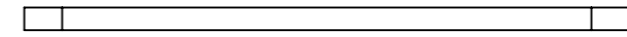


Angle 50mm x 50mm x 3mm
2" x 2" x 1/8"

UNLESS OTHERWISE SPECIFIED: DIMENSIONS ARE IN MILLIMETERS		FINISH:		DEBUR AND BREAK SHARP EDGES		DO NOT SCALE DRAWING		REVISION A	
TOLERANCES: LINEAR: +/- 1mm ANGULAR: +/- 1degree						TITLE: Designed 2 Build Long Angle			
	NAME	DATE							
DRAWN	Merlin	2017-01-03							
	NAME	DATE				DWG NO. p0071-008		A3	
Q.A	Merlin	2017-04-23				MATERIAL: Plain Carbon Steel		SCALE:1:10	
		Copyright (c)2017 Designed 2 Build All rights reserved. Permission is hereby granted to produce one item from these plans for personal use only.		WEIGHT: 4552.99		SHEET 9 OF 18			

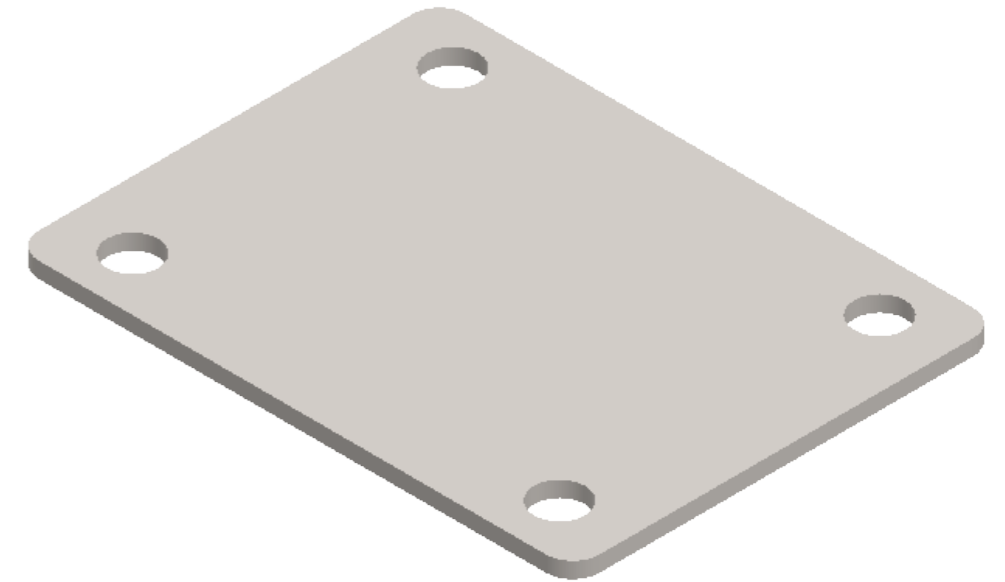



Flat 60mm x 105mm x 3mm
2.5" x 4.25" x 1/8"

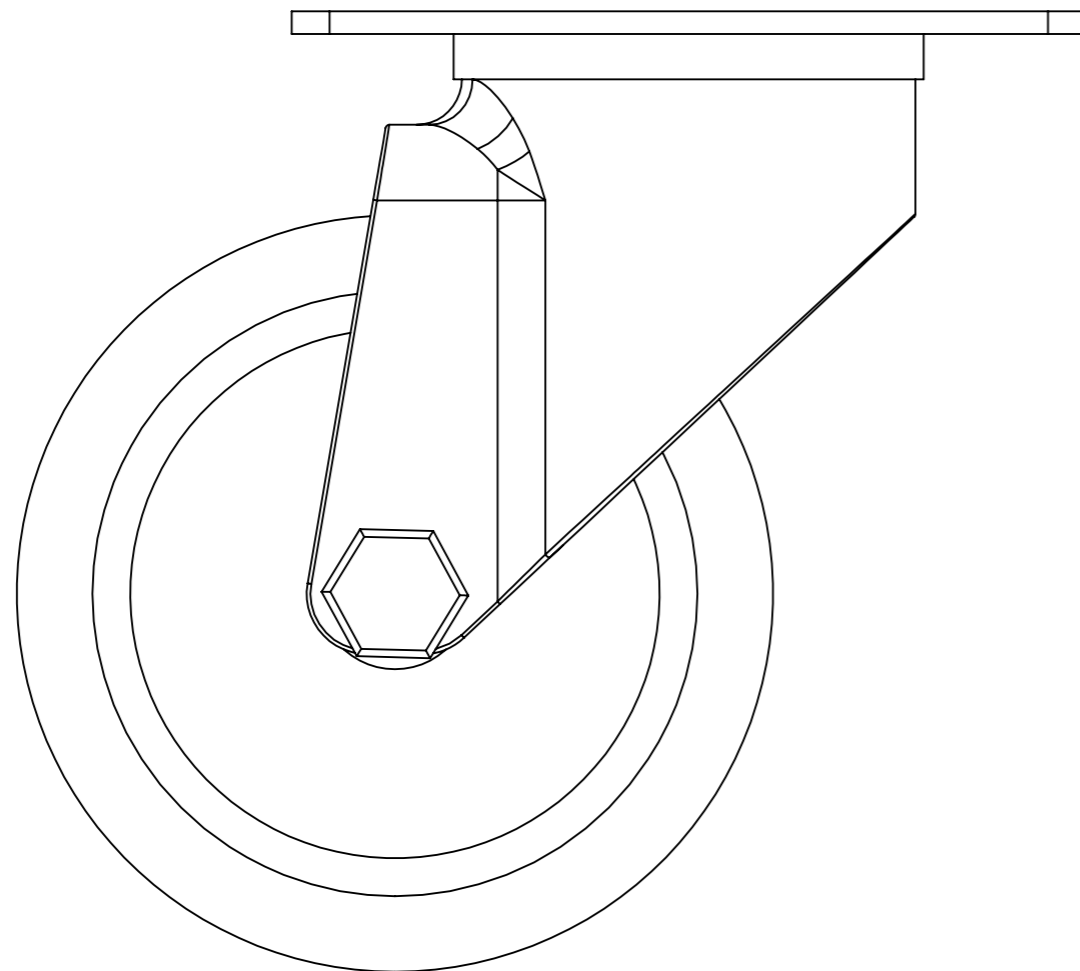
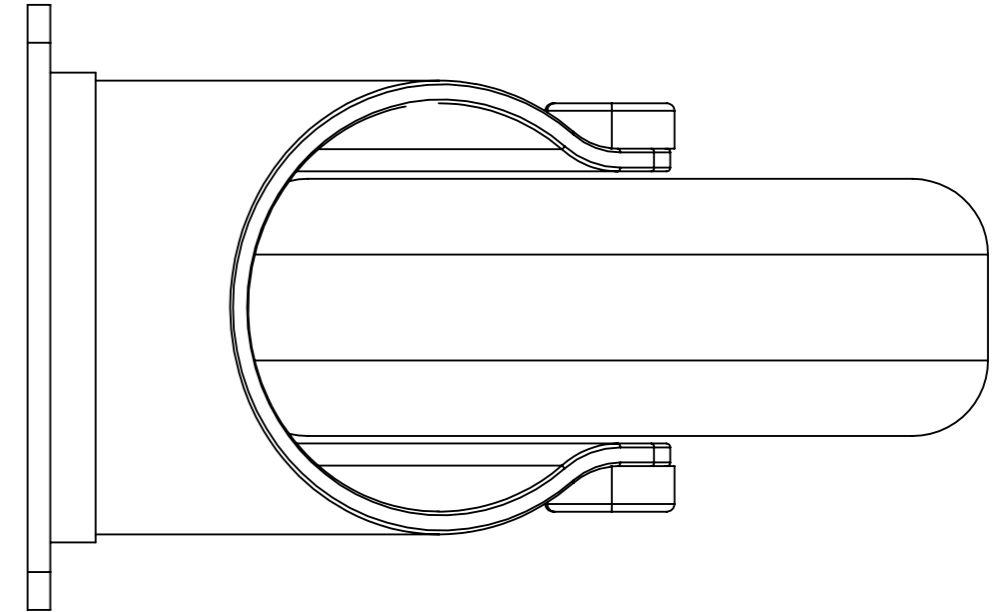
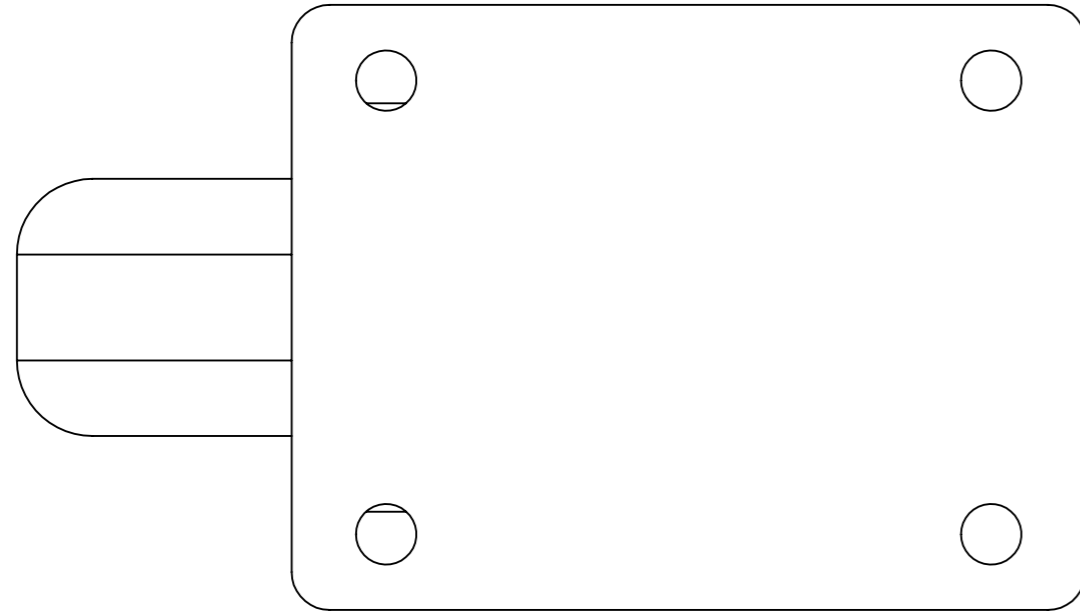


Buy the castors first and size this to suit, including the holes.

As you will see in the video I got my hands on some smaller castors and welded them directly to the legs so I didn't use these plates at all.




UNLESS OTHERWISE SPECIFIED: DIMENSIONS ARE IN MILLIMETERS		FINISH:		DEBUR AND BREAK SHARP EDGES		DO NOT SCALE DRAWING		REVISION A	
TOLERANCES: LINEAR: +/- 1mm ANGULAR: +/- 1degree						TITLE: Castor Mount Plate			
								DWG NO. p0071-009	
DRAWN Merlin 2017-02-25		DATE 2017-02-25							
Q.A Merlin 2017-04-23		DATE 2017-04-23							
		Copyright (c)2017 Designed 2 Build All rights reserved. Permission is hereby granted to produce one item from these plans for personal use only.		MATERIAL: Plain Carbon Steel		WEIGHT: 189.39		SCALE:1:1	
						SHEET 10 OF 18			

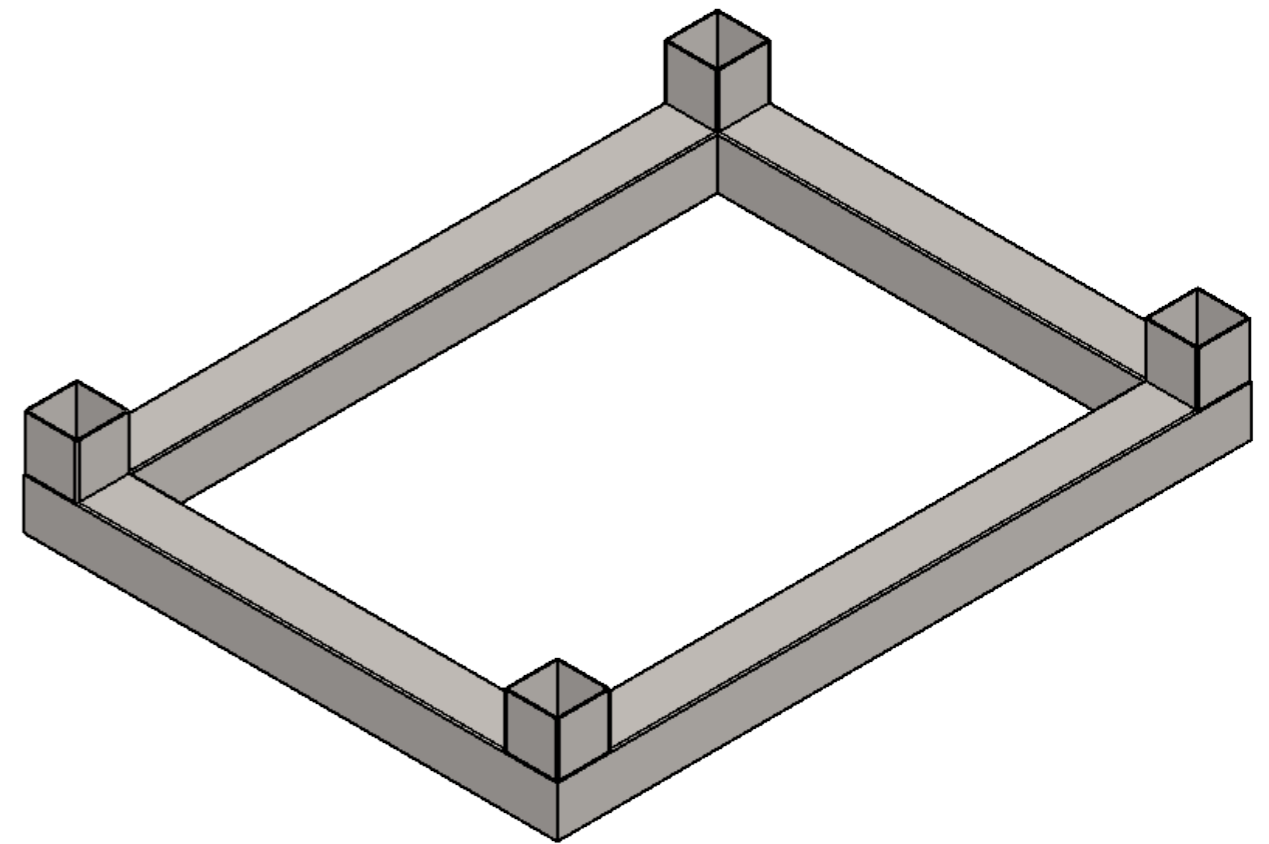
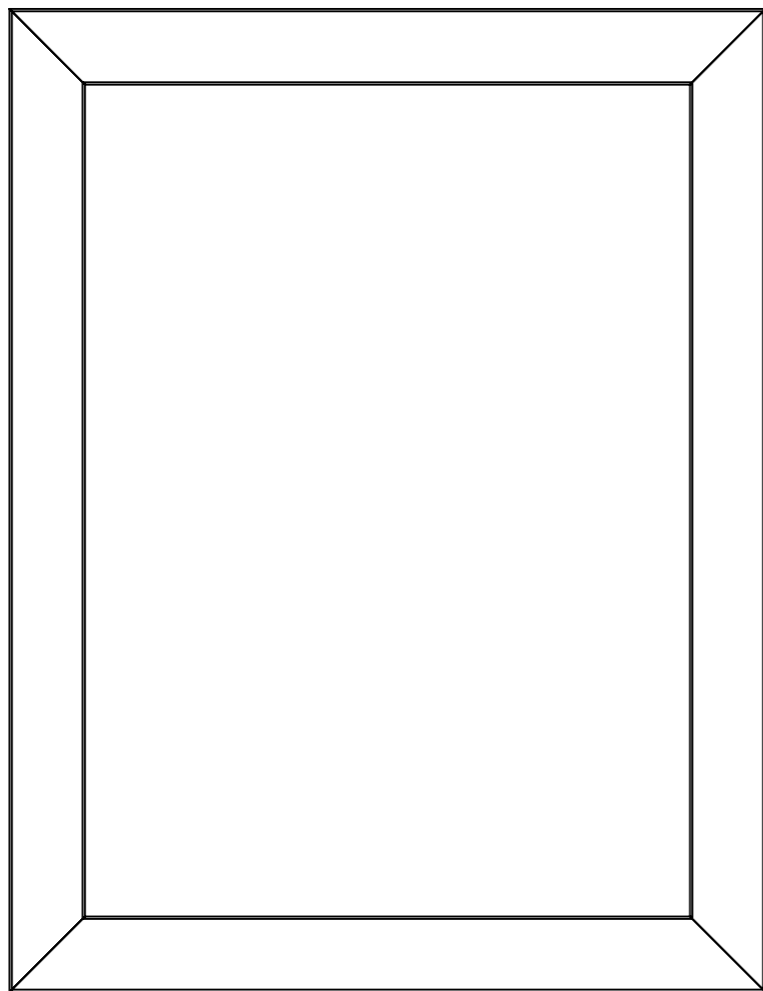



I used 4 castors because it makes it easier to manouver in tight spaces. You could use 2 castors and 2 fixed if you don't need super manouverability. Getting castors with a brake is a good idea.

Getting castors with brakes is a good idea.

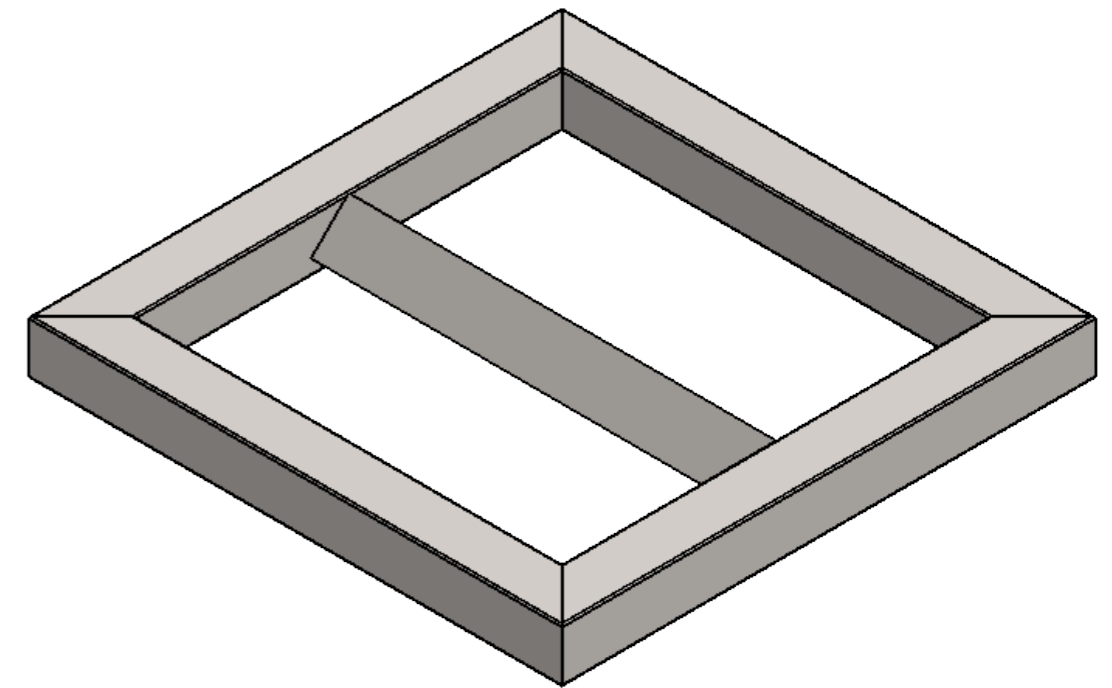
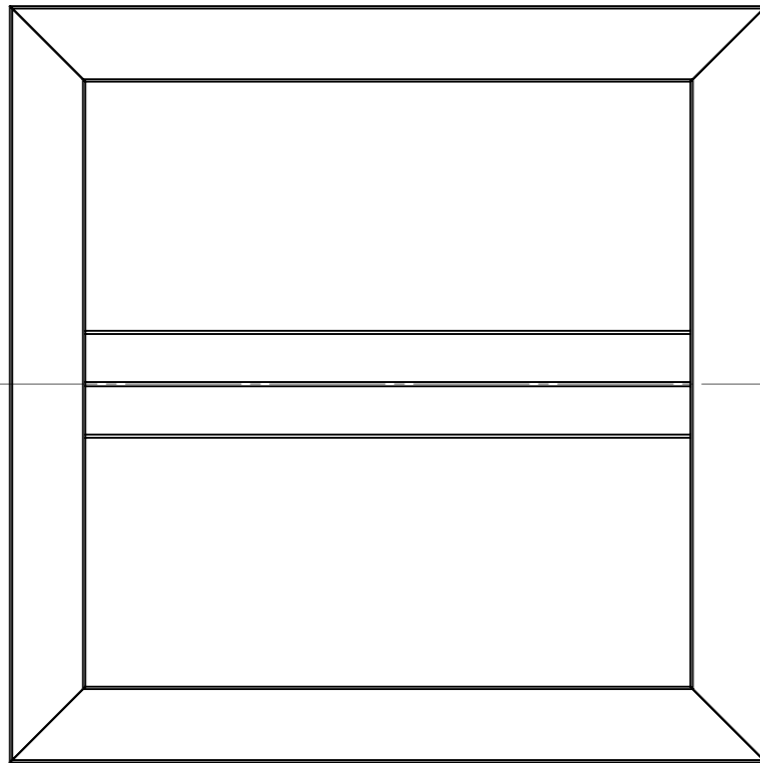
As you will see in the video I got my hands on some slightly smaller castors and welded them directly to the legs.

UNLESS OTHERWISE SPECIFIED: DIMENSIONS ARE IN MILLIMETERS		FINISH:		DEBUR AND BREAK SHARP EDGES		DO NOT SCALE DRAWING		REVISION A	
TOLERANCES: LINEAR: +/- 1mm ANGULAR: +/- 1degree						TITLE: Designed 2 Build Castor 100mm			
DRAWN Merlin		DATE 2017-04-23							
Q.A Merlin									
		Copyright (c)2017 Designed 2 Build All rights reserved. Permission is hereby granted to produce one item from these plans for personal use only.		MATERIAL:		DWG NO. p0071-010		A3	
				WEIGHT:		SCALE:1:1		SHEET 11 OF 18	



UNLESS OTHERWISE SPECIFIED: DIMENSIONS ARE IN MILLIMETERS		FINISH: Paint		DEBUR AND BREAK SHARP EDGES		DO NOT SCALE DRAWING		REVISION A	
TOLERANCES: LINEAR: +/- 1mm ANGULAR: +/- 1degree						TITLE: Designed 2 Build Square			
DRAWN Merlin 2017-01-03		DATE 2017-01-03							
Q.A Merlin 2017-04-23		DATE 2017-04-23				DWG NO. p0071-A01		A3	
		Copyright (c)2017 Designed 2 Build All rights reserved. Permission is hereby granted to produce one item from these plans for personal use only.		MATERIAL: Assembly		SCALE:1:5		SHEET 12 OF 18	
				WEIGHT: 5518.22					

QTY.	PART NUMBER	DESCRIPTION	MATERIAL	WEIGHT
2	p0071-001	SHS Short Mitre	Plain Carbon Steel	1079.65
2	p0071-002	SHS Saw Drop Side	Plain Carbon Steel	1439.54
4	p0071-006	SHS Spacer	Plain Carbon Steel	119.96

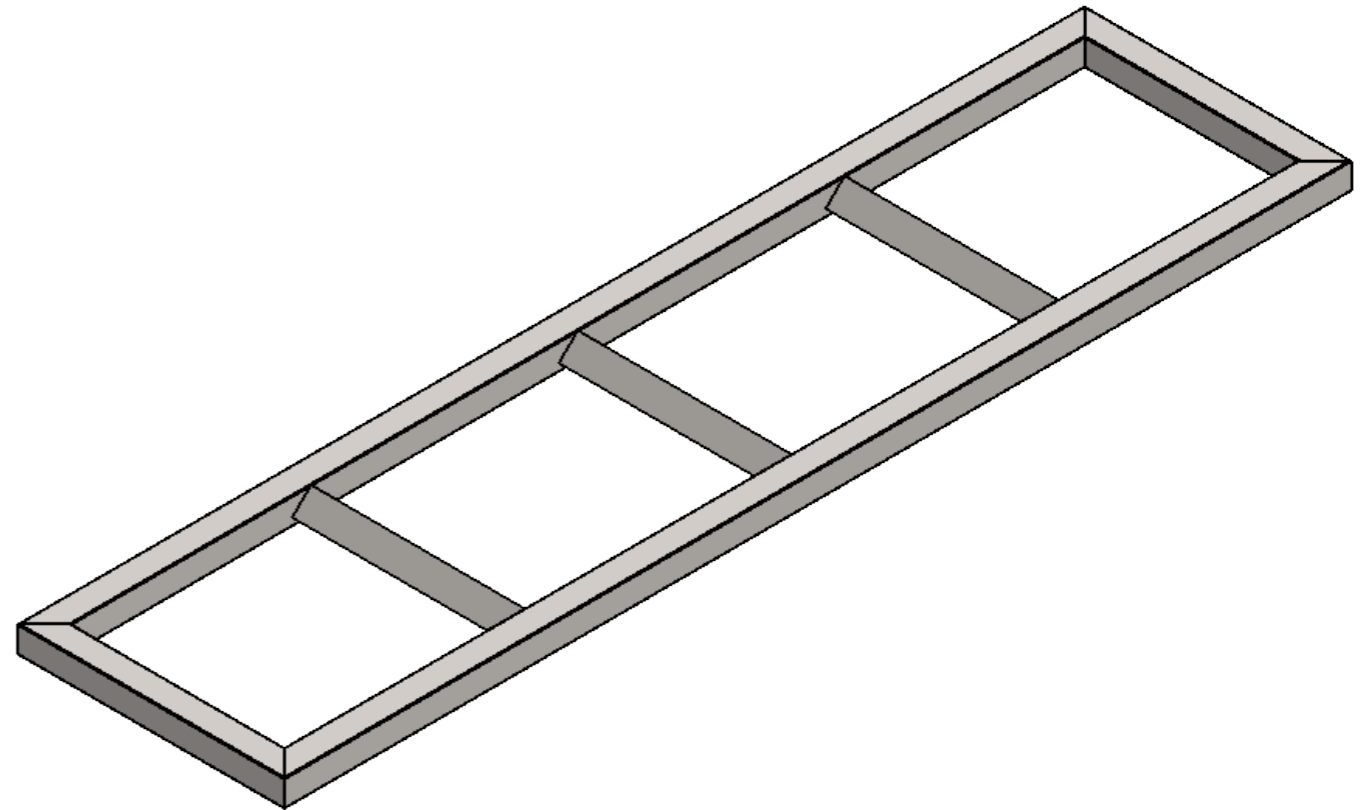
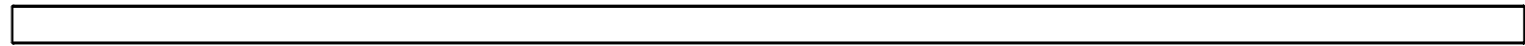
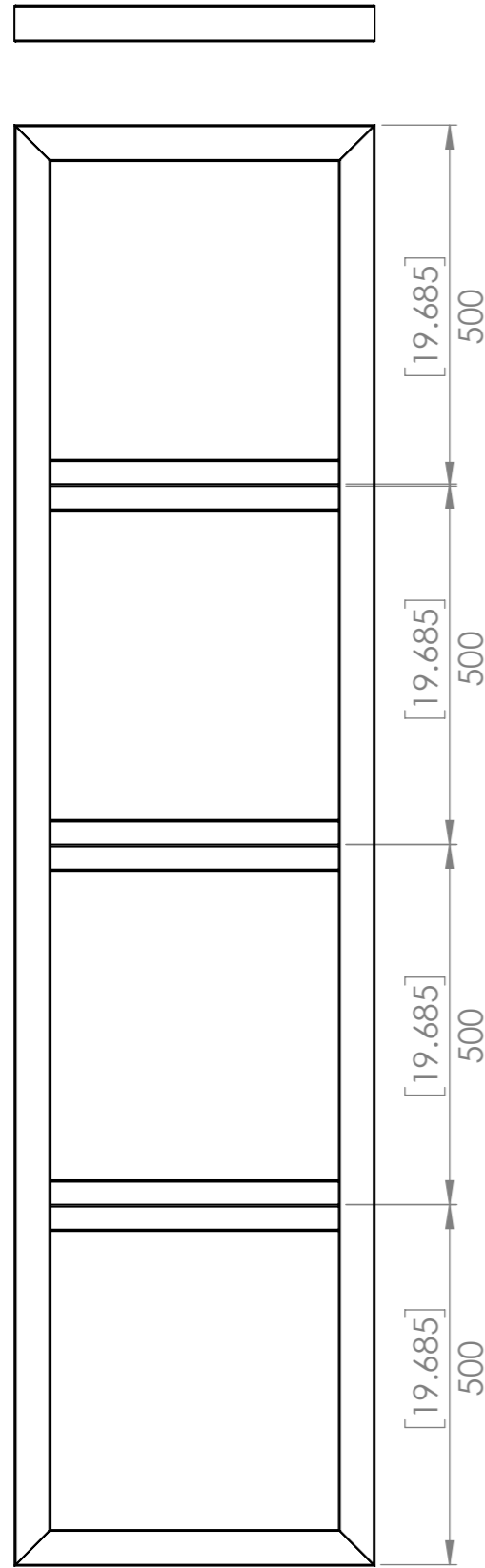


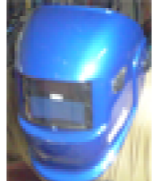
UNLESS OTHERWISE SPECIFIED: DIMENSIONS ARE IN MILLIMETERS		FINISH: Paint		DEBUR AND BREAK SHARP EDGES		DO NOT SCALE DRAWING		REVISION A	
TOLERANCES: LINEAR: +/- 1mm ANGULAR: +/- 1degree						Designed 2 Build TITLE: Square End			
DRAWN Merlin		DATE 2017-01-03							
Q.A Merlin		DATE 2017-04-23							
						MATERIAL: Assembly		DWG NO. p0071-A02	
						WEIGHT: 5229.21		SCALE:1:5	
								SHEET 13 OF 18	



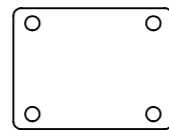
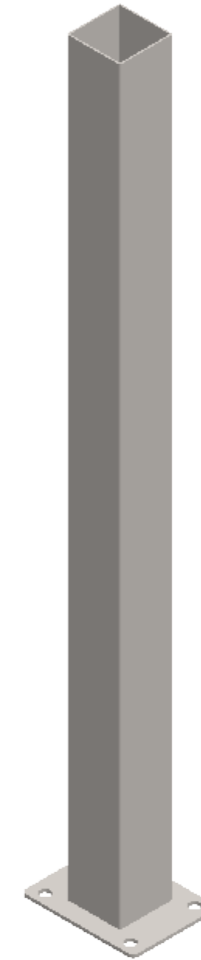
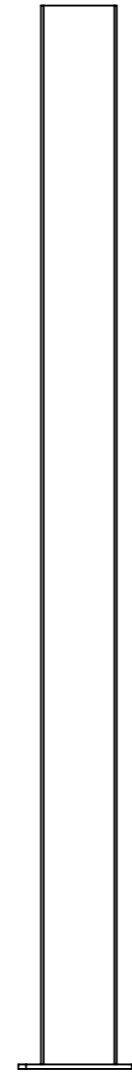
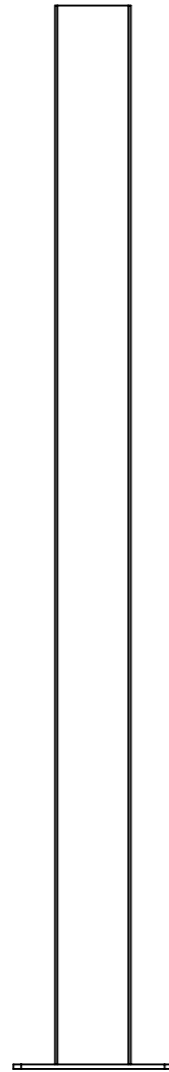
Copyright (c)2017
Designed 2 Build
All rights reserved.
Permission is hereby
granted to produce
one item from these
plans for personal use
only.

QTY.	PART NUMBER	DESCRIPTION	MATERIAL	WEIGHT
4	p0071-001	SHS Short Mitre	Plain Carbon Steel	1079.65
1	p0071-007	Short Angle	Plain Carbon Steel	910.60




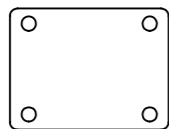
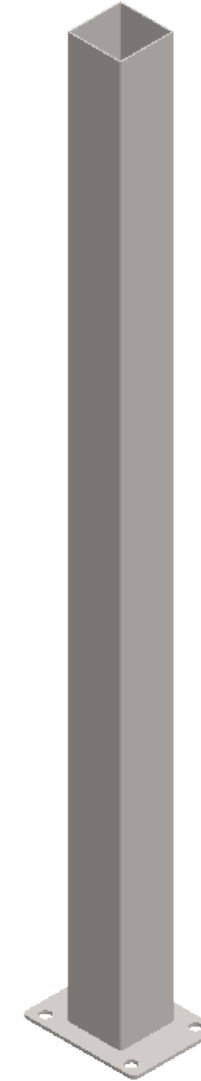
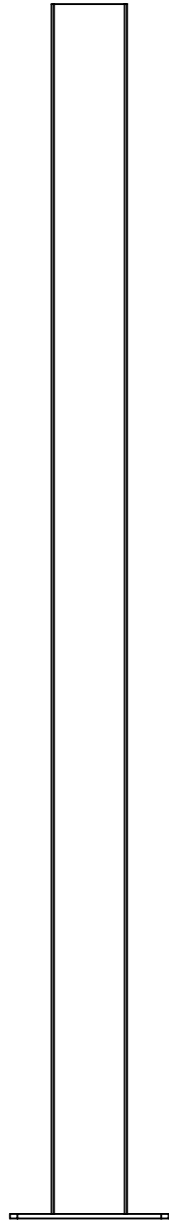
UNLESS OTHERWISE SPECIFIED: DIMENSIONS ARE IN MILLIMETERS		FINISH: Paint	DEBUR AND BREAK SHARP EDGES	DO NOT SCALE DRAWING	REVISION A
TOLERANCES: LINEAR: +/- 1mm ANGULAR: +/- 1degree				Designed 2 Build	
DRAWN Merlin 2017-01-03					
Q.A Merlin 2017-04-23				DWG NO. p0071-A03	
 Copyright (c)2017 Designed 2 Build All rights reserved. Permission is hereby granted to produce one item from these plans for personal use only.		MATERIAL: Assembly		A3	
		WEIGHT: 14248.09		SCALE:1:10	
				SHEET 14 OF 18	

QTY.	PART NUMBER	DESCRIPTION	MATERIAL	WEIGHT
2	p0071-001	SHS Short Mitre	Plain Carbon Steel	1079.65
2	p0071-003	SHS Long	Plain Carbon Steel	4678.49
3	p0071-007	Short Angle	Plain Carbon Steel	910.60




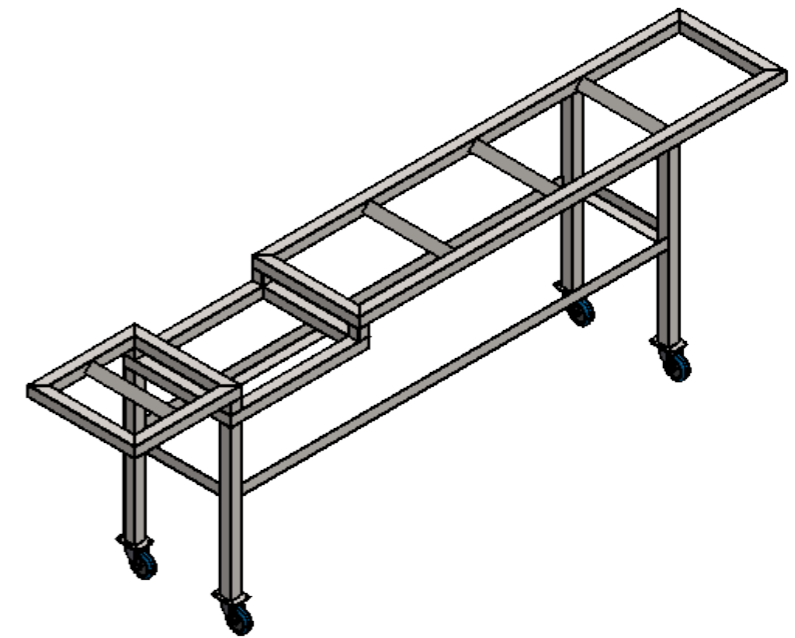
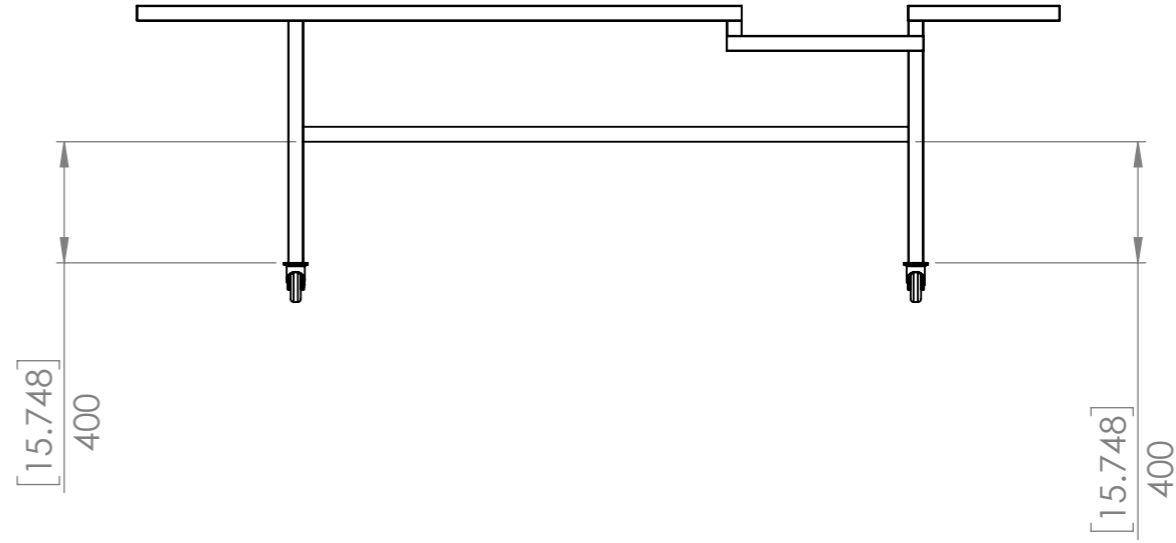
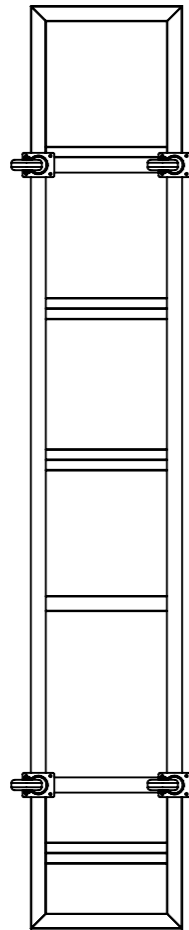
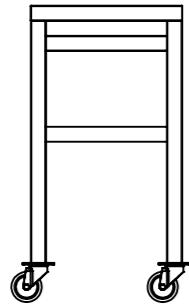
QTY.	PART NUMBER	DESCRIPTION	MATERIAL	WEIGHT
1	p0071-004	Leg (Short)	Plain Carbon Steel	1679.44
1	p0071-009	Castor Mount Plate	Plain Carbon Steel	189.39

UNLESS OTHERWISE SPECIFIED: DIMENSIONS ARE IN MILLIMETERS		FINISH: Paint	DEBUR AND BREAK SHARP EDGES	DO NOT SCALE DRAWING	REVISION A
TOLERANCES: LINEAR: +/- 1mm ANGULAR: +/- 1degree		Designed 2 Build			
DRAWN Merlin		DATE 2017-01-03		TITLE: Leg (short)	
Q.A Merlin		DATE 2017-04-23			
 Copyright (c) 2017 Designed 2 Build All rights reserved. Permission is hereby granted to produce one item from these plans for personal use only.		MATERIAL: Assembly		DWG NO. p0071-A04	A3
		WEIGHT: 1868.83		SCALE: 1:5	SHEET 15 OF 18




QTY.	PART NUMBER	DESCRIPTION	MATERIAL	WEIGHT
1	p0071-005	Leg (Long)	Plain Carbon Steel	1919.36
1	p0071-009	Castor Mount Plate	Plain Carbon Steel	189.39

UNLESS OTHERWISE SPECIFIED: DIMENSIONS ARE IN MILLIMETERS		FINISH: Paint	DEBUR AND BREAK SHARP EDGES	DO NOT SCALE DRAWING	REVISION A
TOLERANCES: LINEAR: +/- 1mm ANGULAR: +/- 1degree				Designed 2 Build	
	NAME	DATE		TITLE: Leg (long)	
DRAWN	Merlin	2017-01-03			
Q.A	Merlin	2017-04-23			
		Copyright (c)2017 Designed 2 Build All rights reserved. Permission is hereby granted to produce one item from these plans for personal use only.		MATERIAL: Assembly	DWG NO. p0071-A05
		WEIGHT: 2108.75		SCALE:1:5	SHEET 16 OF 18
			A3		



QTY.	PART NUMBER	DESCRIPTION	MATERIAL	WEIGHT
2	p0071-007	Short Angle	Plain Carbon Steel	910.60
2	p0071-008	Long Angle	Plain Carbon Steel	4552.99
4	p0071-010	Castor 100mm		
1	p0071-A01	Square	Assembly	5518.22
1	p0071-A02	Square End	Assembly	5229.21
1	p0071-A03	SHS Rectangle	Assembly	14248.09
2	p0071-A04	Leg (short)	Assembly	1868.83
2	p0071-A05	Leg (long)	Assembly	2108.75

UNLESS OTHERWISE SPECIFIED: DIMENSIONS ARE IN MILLIMETERS		FINISH: Paint		DEBUR AND BREAK SHARP EDGES		DO NOT SCALE DRAWING		REVISION B	
TOLERANCES: LINEAR: +/- 1mm ANGULAR: +/- 1degree						<h2 style="text-align: center;">Designed 2 Build</h2> <h1 style="text-align: center;">Chop Saw Table</h1>			
DRAWN Merlin 2017-01-03		DATE 2017-01-03		TITLE:					
Q.A Merlin 2017-04-23		DATE 2017-04-23		MATERIAL: Assembly		DWG NO. p0071		A3	
		Copyright (c)2017 Designed 2 Build All rights reserved. Permission is hereby granted to produce one item from these plans for personal use only.		WEIGHT: 44977.94		SCALE:1:25		SHEET 17 OF 18	

DISCLAIMER:

I have build these racks and have used them without a problem.

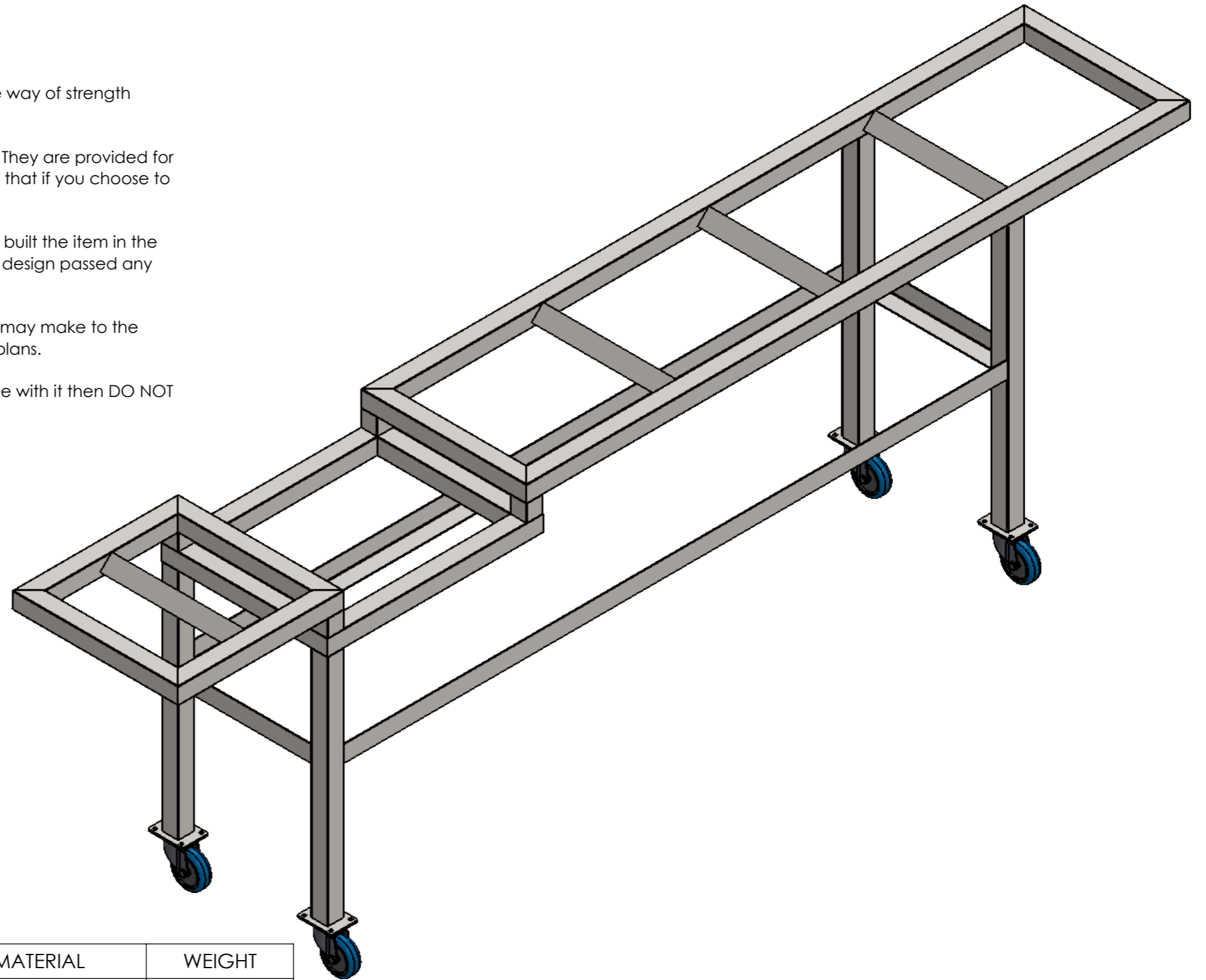
Be warned that I am not an engineer and there has been very little in the way of strength analysis done on this. It is all eyeball engineering.

I provide the plans as an example of something that has worked for me. They are provided for educational purposes only. I want to stress in the strongest possible terms that if you choose to build something from these plans then you do so entirely at your own risk.


Where the plans feature a "QA Date" this only means that I have actually built the item in the plans and completed the build on that date. It does **NOT** mean that the design passed any form of quality assurance.

I have no control of the quality of construction nor the modifications you may make to the design. I take no responsibility for anything you choose to do with these plans.

If you do not fully understand everything above or if you do not fully agree with it then DO NOT USE THESE PLANS.



QTY.	PART NUMBER	DESCRIPTION	MATERIAL	WEIGHT
2	p0071-007	Short Angle	Plain Carbon Steel	910.60
2	p0071-008	Long Angle	Plain Carbon Steel	4552.99
4	p0071-010	Castor 100mm		
1	p0071-A01	Square	Assembly	5518.22
1	p0071-A02	Square End	Assembly	5229.21
1	p0071-A03	SHS Rectangle	Assembly	14248.09
2	p0071-A04	Leg (short)	Assembly	1868.83
2	p0071-A05	Leg (long)	Assembly	2108.75

UNLESS OTHERWISE SPECIFIED: DIMENSIONS ARE IN MILLIMETERS		FINISH: Paint	DEBUR AND BREAK SHARP EDGES	DO NOT SCALE DRAWING	REVISION B
TOLERANCES: LINEAR: +/- 1mm ANGULAR: +/- 1degree				Designed 2 Build Chop Saw Table	
DRAWN	NAME Merlin	DATE 2017-01-03	TITLE:		
Q.A	NAME Merlin	DATE 2017-04-23		DWG NO.	p0071
		Copyright (c)2017 Designed 2 Build All rights reserved. Permission is hereby granted to produce one item from these plans for personal use only.		SCALE:1:10	A3
		MATERIAL: Assembly	WEIGHT: 44977.94	SHEET 18 OF 18	