

DISCLAIMER:

I have built this item and have used it.

Be warned that I am not an engineer and there has been very little in the way of strength analysis done on this. It is all eyeball engineering.


I provide the plans as an example of something that has worked for me. They are provided for educational purposes only. I want to stress in the strongest possible terms that if you choose to build something from these plans then you do so entirely at your own risk.

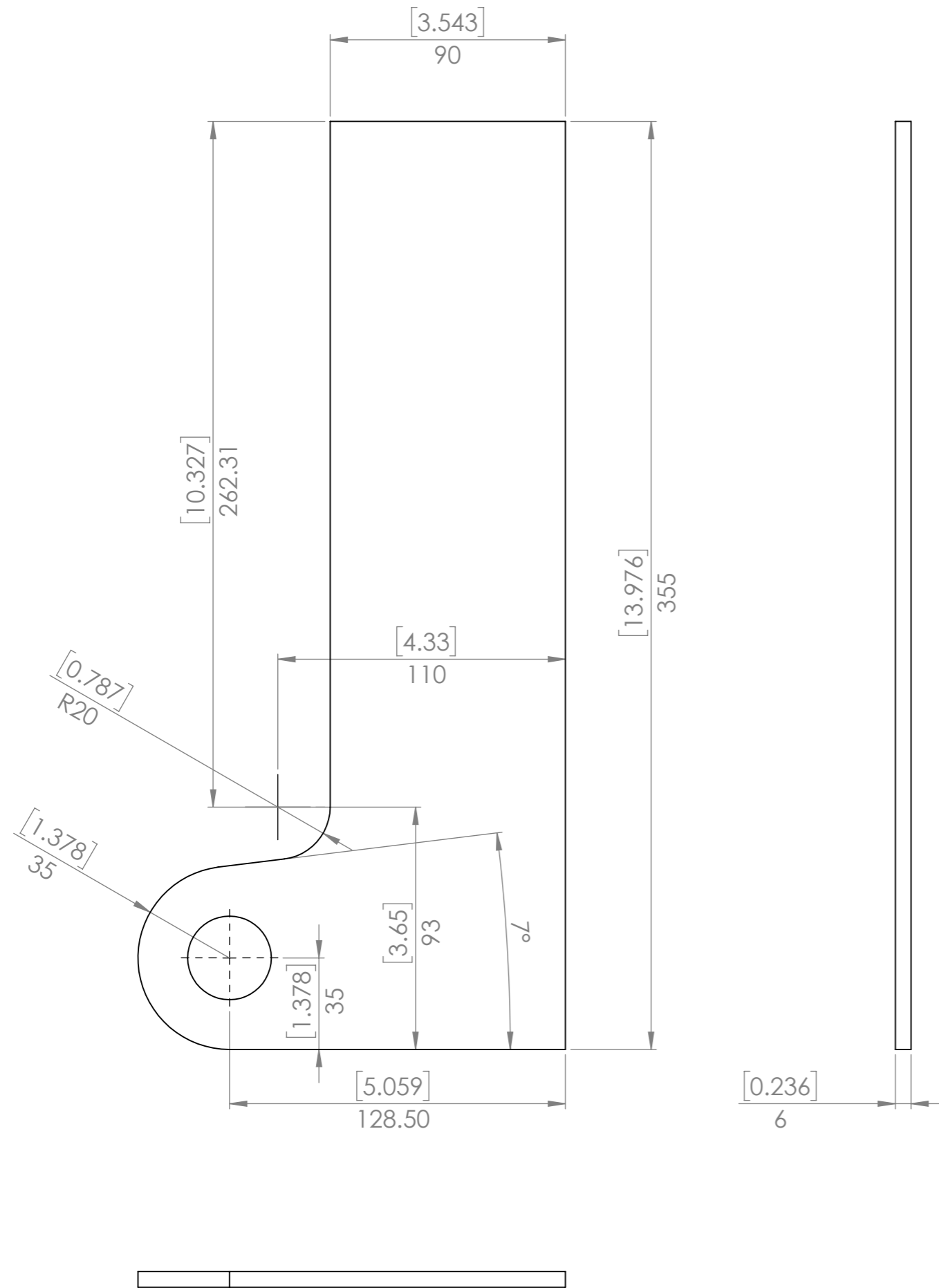
Where the plans feature a "QA Date" this only means that I have actually built the item in the plans and completed the build on that date. It does **NOT** mean that the design passed any form of quality assurance.

I have no control of the quality of construction nor the modifications you may make to the design. I take no responsibility for anything you choose to do with these plans.

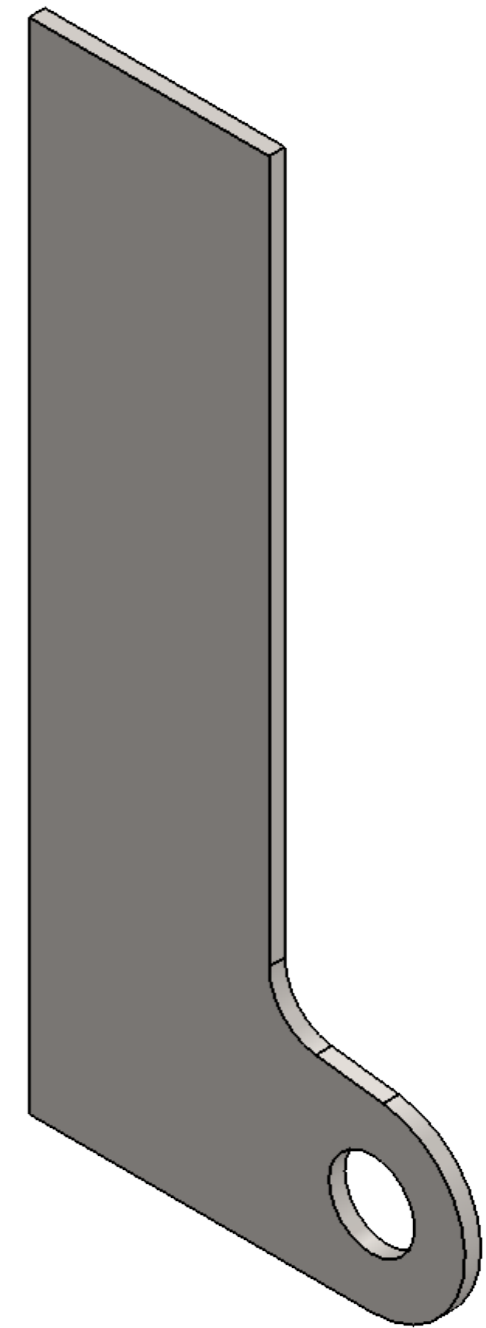
If you do not fully understand everything above or if you do not fully agree with it then DO NOT USE THESE PLANS.


QTY.	PART NUMBER	DESCRIPTION	MATERIAL	WEIGHT
2	p0097-001	Quick Attach Plater	Plain Carbon Steel	1681.56
2	p0097-002	Quick Attach Top	Plain Carbon Steel	648.46
2	p0097-003	Quick Attach Pin	Plain Carbon Steel	219.45

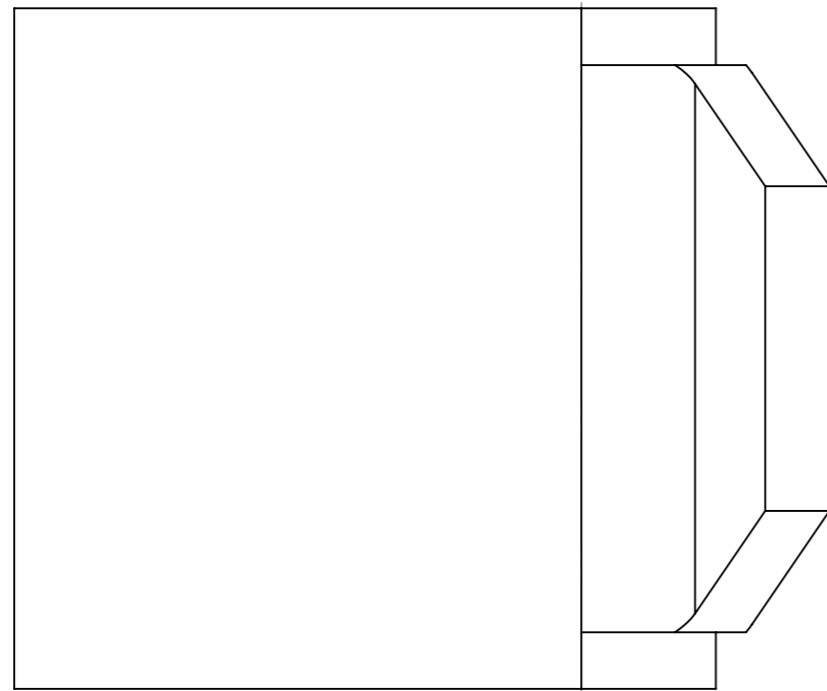
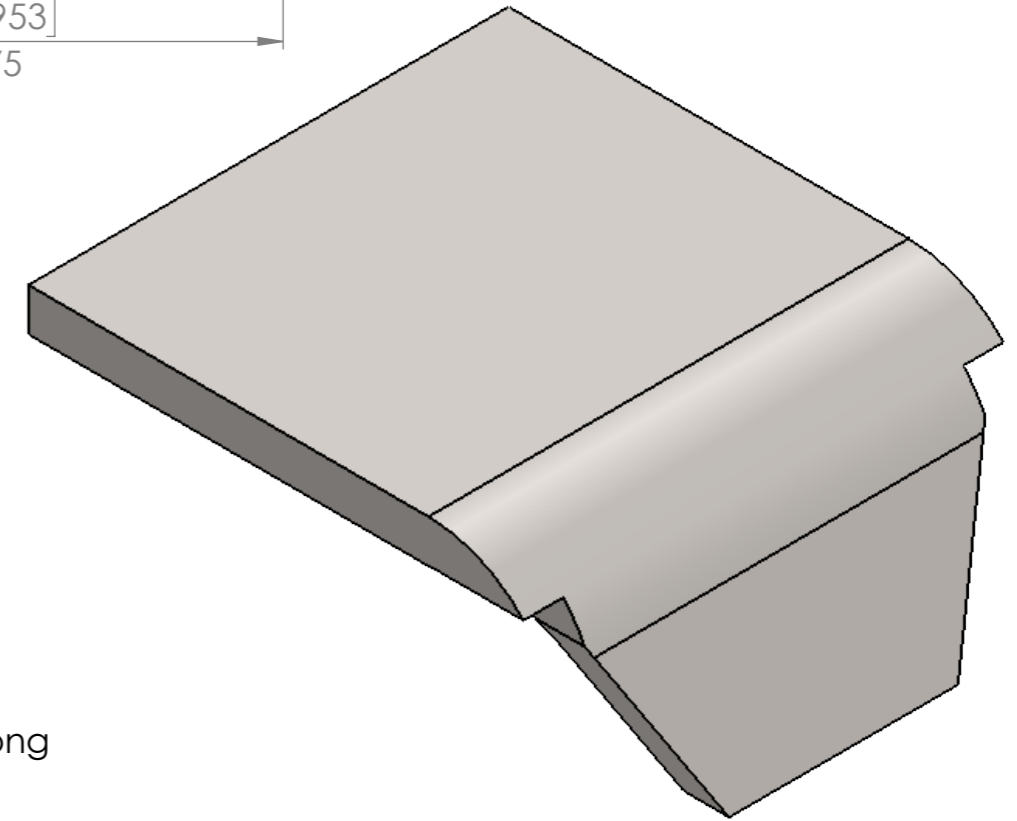
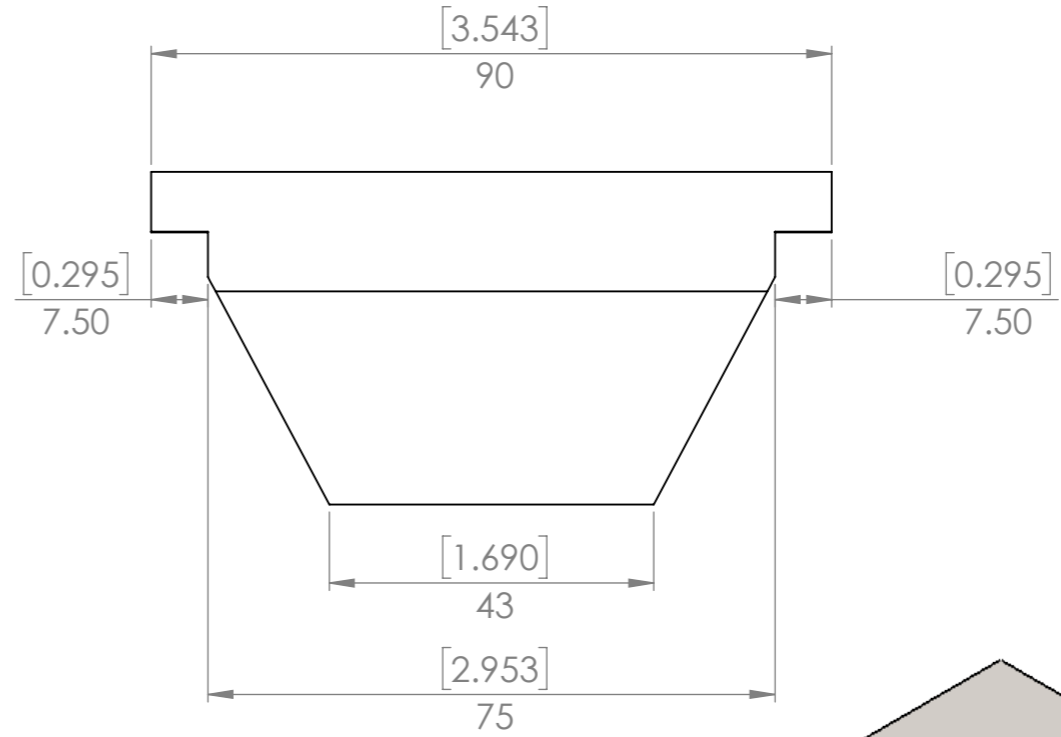
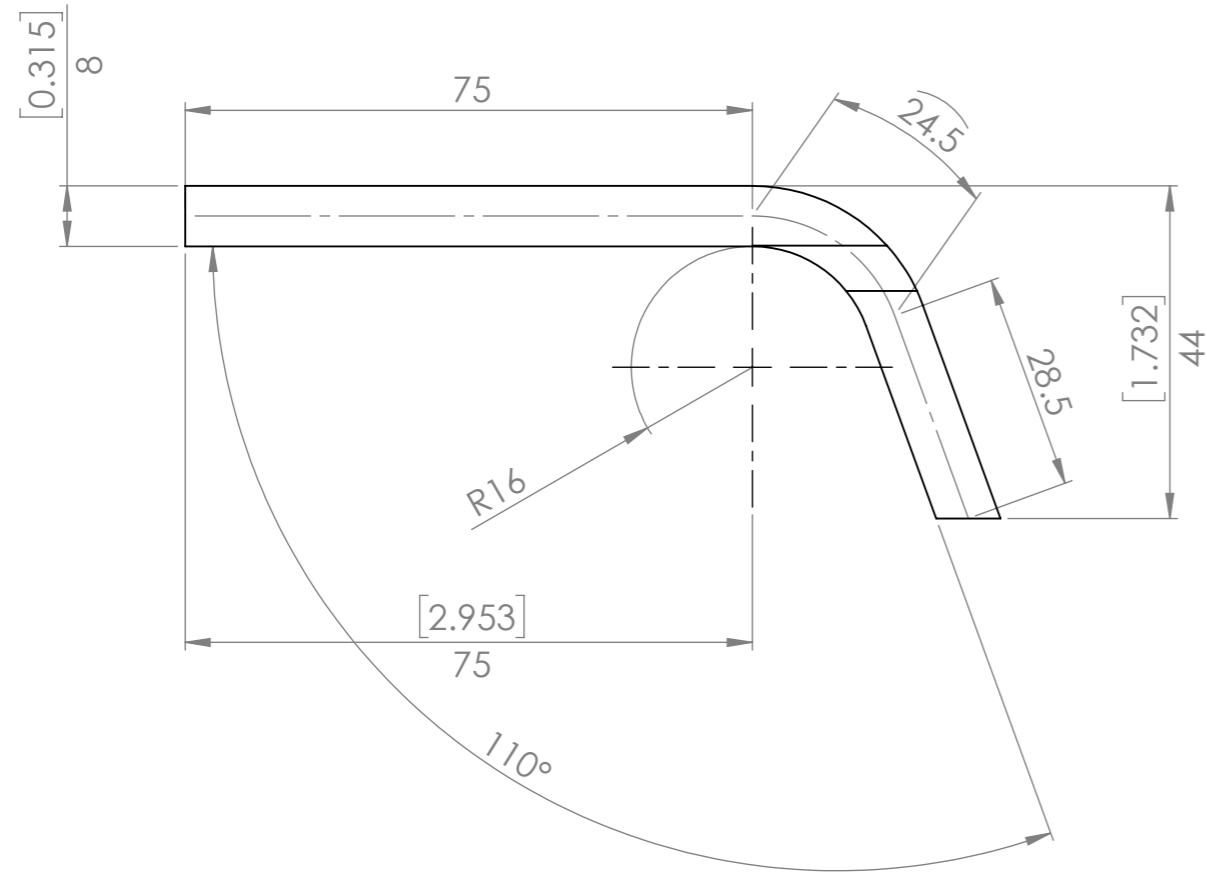
UNLESS OTHERWISE SPECIFIED: DIMENSIONS ARE IN MILLIMETERS		FINISH: Paint	DEBUR AND BREAK SHARP EDGES	DO NOT SCALE DRAWING	REVISION A
TOLERANCES: LINEAR: +/- 1mm ANGULAR: +/- 1degree				Designed 2 Build Quick Attach Fittings	
DRAWN	NAME Merlin	DATE 2017-05-14			
Q.A	NAME Merlin	DATE 2018-04-14		PART NO.	p0097-A03
 Copyright (c)2017 Designed 2 Build All rights reserved. Permission is hereby granted to produce one item from these plans for personal use only.		STOCK:		SCALE:1:4	SHEET 1 OF 7
		STOCK SIZE:		WEIGHT: 5098.94	
		MATERIAL:	Assembly		A3



2 required



UNLESS OTHERWISE SPECIFIED: DIMENSIONS ARE IN MILLIMETERS		FINISH:		DEBUR AND BREAK SHARP EDGES		DO NOT SCALE DRAWING		REVISION A			
TOLERANCES: LINEAR: +/- 1mm ANGULAR: +/- 1degree						TITLE: Quick Attach Plater					
DRAWN Merlin		DATE 2017-05-14						PART NO. p0097-001		A3	
Q.A Merlin		DATE 2018-04-14						SCALE:1:2		SHEET 2 OF 7	
		Copyright (c)2017 Designed 2 Build All rights reserved. Permission is hereby granted to produce one item from these plans for personal use only.		STOCK: Flat		STOCK SIZE: 6mm		MATERIAL: Plain Carbon Steel		WEIGHT: 1681.56	



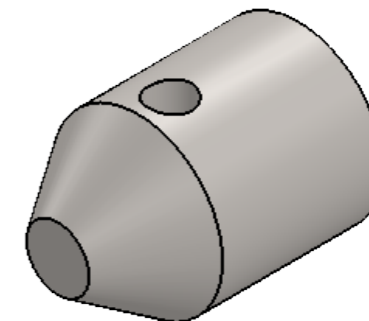
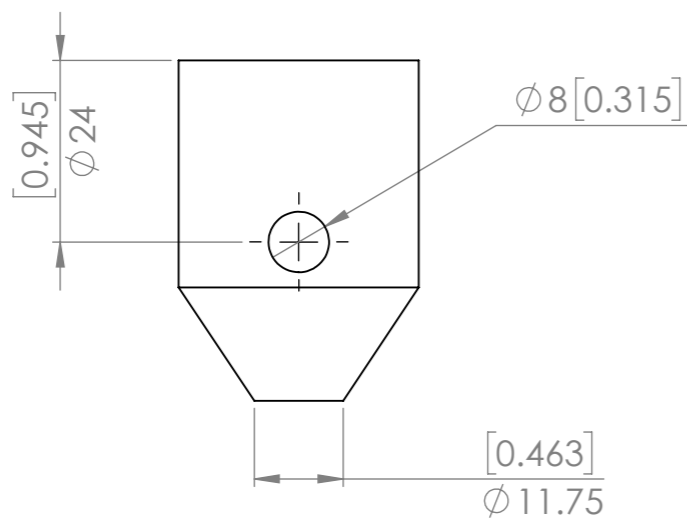
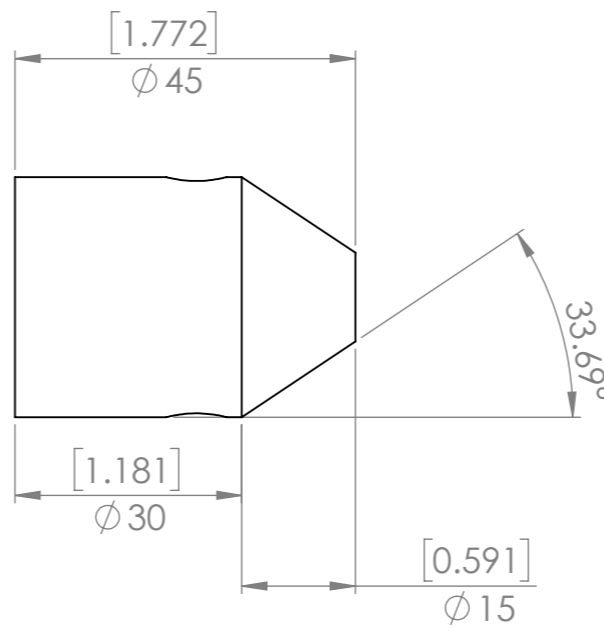
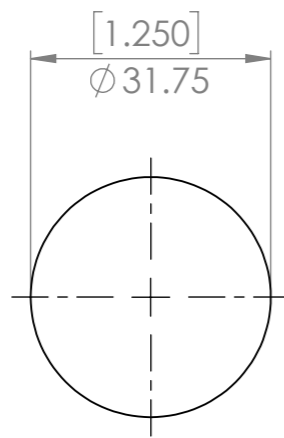
NOTE: 128 mm long

2 required


UNLESS OTHERWISE SPECIFIED: DIMENSIONS ARE IN MILLIMETERS		FINISH:		DEBUR AND BREAK SHARP EDGES		DO NOT SCALE DRAWING		REVISION A			
TOLERANCES: LINEAR: +/- 1mm ANGULAR: +/- 1degree						Designed 2 Build Quick Attach Top		TITLE:			
								PART NO.		A3	
								p0097-002			
DRAWN Merlin 2017-05-14		DATE 2017-05-14		STOCK: Flat		STOCK SIZE: 90 x 8mm		SCALE:1:1			
Q.A Merlin 2019-04-14		DATE 2019-04-14		MATERIAL: Plain Carbon Steel		WEIGHT: 648.46		SHEET 3 OF 7			

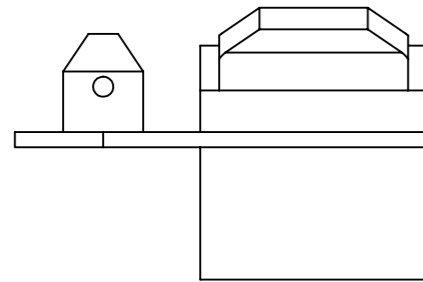
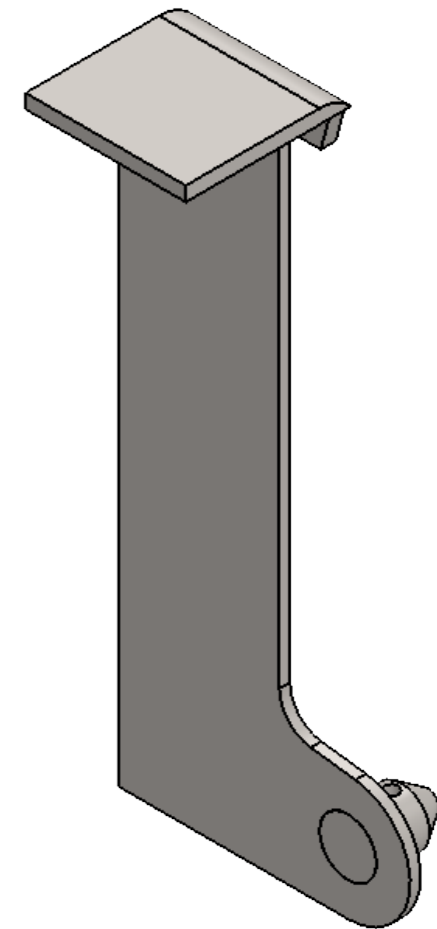
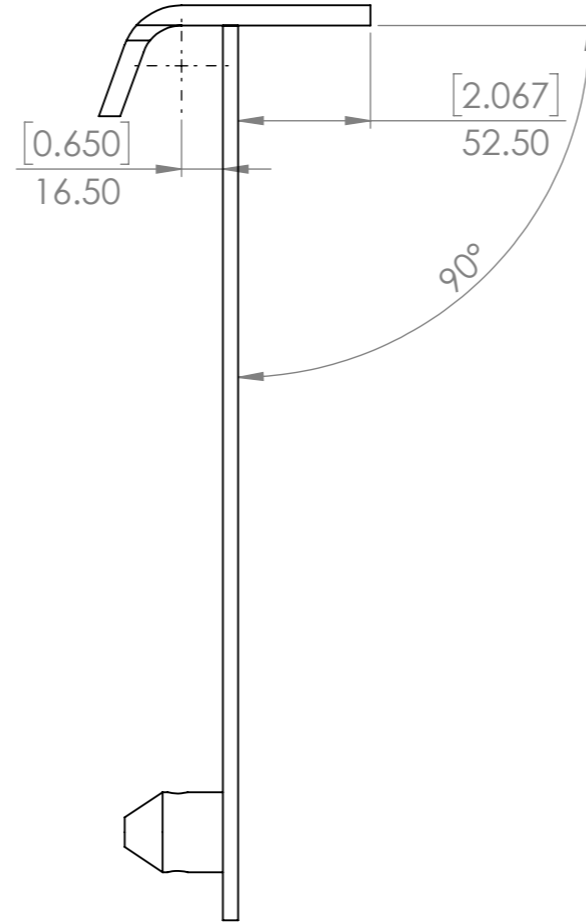
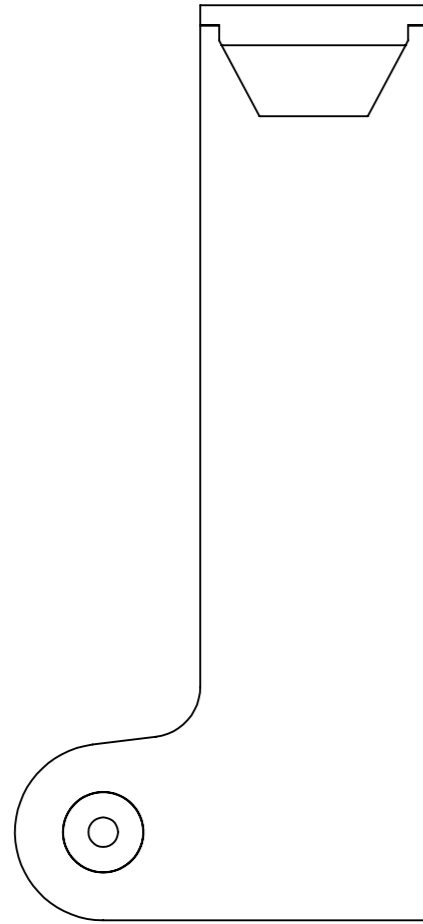


Copyright (c)2017
Designed 2 Build
All rights reserved.
Permission is hereby
granted to produce
one item from these
plans for personal use
only.




2 required

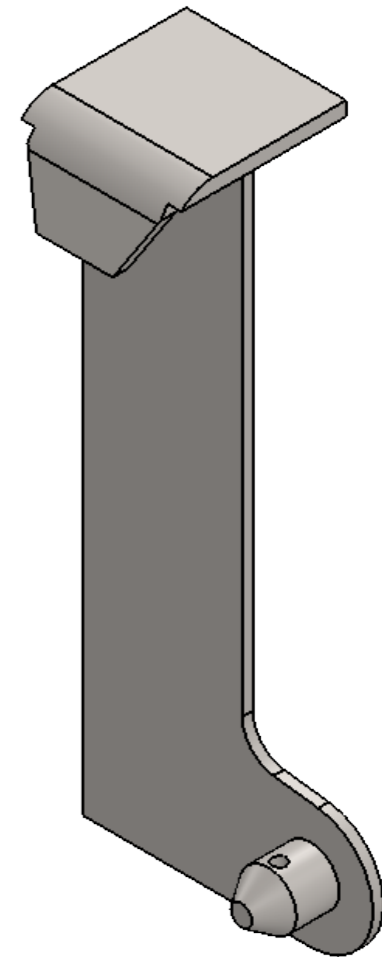
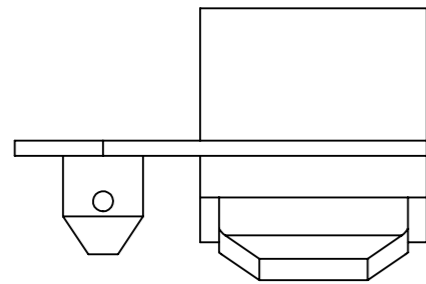
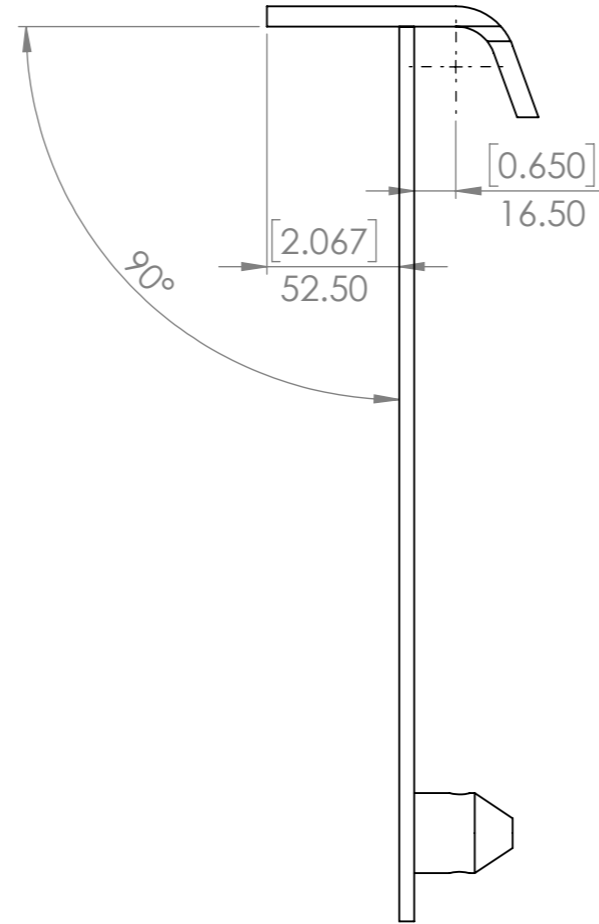
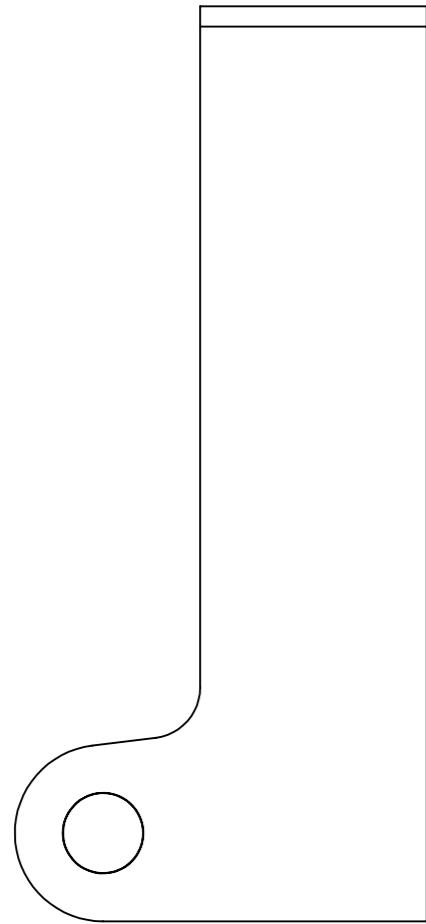
UNLESS OTHERWISE SPECIFIED: DIMENSIONS ARE IN MILLIMETERS		FINISH:		DEBUR AND BREAK SHARP EDGES		DO NOT SCALE DRAWING		REVISION A	
TOLERANCES: LINEAR: +/- 1mm ANGULAR: +/- 1degree						Designed 2 Build Quick Attach Pin			
DRAWN Merlin		DATE 2017-05-14				TITLE:			
Q.A Merlin		DATE 2018-04-14				PART NO. p0097-003			
		Copyright (c)2017 Designed 2 Build All rights reserved. Permission is hereby granted to produce one item from these plans for personal use only.		STOCK: Rod STOCK SIZE: 1.5inch (31.75mm) MATERIAL: Plain Carbon Steel		WEIGHT: 219.45		SCALE:1:1 SHEET 4 OF 7	
								A3	



1 Required


QTY.	PART NUMBER	DESCRIPTION	MATERIAL	WEIGHT
1	p0097-001	Quick Attach Plater	Plain Carbon Steel	1681.56
1	p0097-002	Quick Attach Top	Plain Carbon Steel	648.46
1	p0097-003	Quick Attach Pin	Plain Carbon Steel	219.45

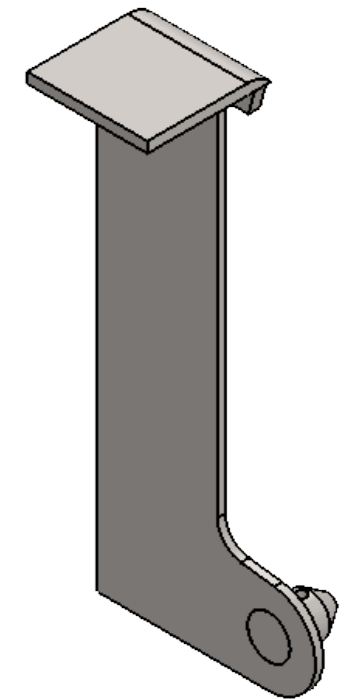
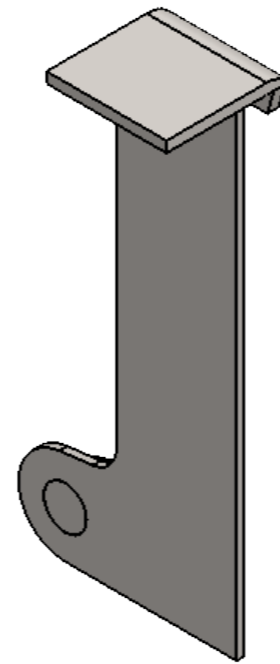
UNLESS OTHERWISE SPECIFIED: DIMENSIONS ARE IN MILLIMETERS		FINISH: Paint	DEBUR AND BREAK SHARP EDGES	DO NOT SCALE DRAWING	REVISION A
TOLERANCES: LINEAR: +/- 1mm ANGULAR: +/- 1degree				Designed 2 Build Left Quick Attach	
DRAWN Merlin	DATE 2017-05-14				
Q.A Merlin	DATE 2018-04-14			PART NO. p0097-A01	
 Copyright (c)2017 Designed 2 Build All rights reserved. Permission is hereby granted to produce one item from these plans for personal use only.		STOCK:	Assembly	A3	
		STOCK SIZE:		WEIGHT: 2549.47	SCALE:1:3
		MATERIAL:		SHEET 5 OF 7	



1 Required

QTY.	PART NUMBER	DESCRIPTION	MATERIAL	WEIGHT
1	p0097-001	Quick Attach Plater	Plain Carbon Steel	1681.56
1	p0097-002	Quick Attach Top	Plain Carbon Steel	648.46
1	p0097-003	Quick Attach Pin	Plain Carbon Steel	219.45

UNLESS OTHERWISE SPECIFIED: DIMENSIONS ARE IN MILLIMETERS		FINISH: Paint	DEBUR AND BREAK SHARP EDGES	DO NOT SCALE DRAWING	REVISION A
TOLERANCES: LINEAR: +/- 1mm ANGULAR: +/- 1degree				Designed 2 Build	
NAME	DATE				
DRAWN Merlin	2017-05-14			Right Quick Attach	
Q.A Merlin	2017-04-14				
 Copyright (c)2017 Designed 2 Build All rights reserved. Permission is hereby granted to produce one item from these plans for personal use only.		STOCK:		PART NO. p0097-A01	A3
		STOCK SIZE:			
		MATERIAL: Assembly		SCALE:1:3	SHEET 6 OF 7
		WEIGHT: 2549.47			



1 Required

UNLESS OTHERWISE SPECIFIED: DIMENSIONS ARE IN MILLIMETERS		FINISH: Paint		DEBUR AND BREAK SHARP EDGES		DO NOT SCALE DRAWING		REVISION A	
TOLERANCES: LINEAR: +/- 1mm ANGULAR: +/- 1degree						Designed 2 Build Quick Attach Fittings			
DRAWN		NAME		DATE		TITLE:			
		Merlin		2017-05-14		PART NO. p0097-A03 A3			
Q.A		Merlin		2018-04-14					
						STOCK:			
						STOCK SIZE:			
						MATERIAL:		Assembly	
						WEIGHT: 5098.94		SCALE:1:4	
								SHEET 7 OF 7	



Copyright (c)2017
Designed 2 Build
All rights reserved.
Permission is hereby
granted to produce
one item from these
plans for personal use
only.

QTY.	PART NUMBER	DESCRIPTION	MATERIAL	WEIGHT
1	p0097-A01	Left Quick Attach	Assembly	2549.47
1	p0097-A01	Right Quick Attach	Assembly	2549.47