

**DISCLAIMER:**

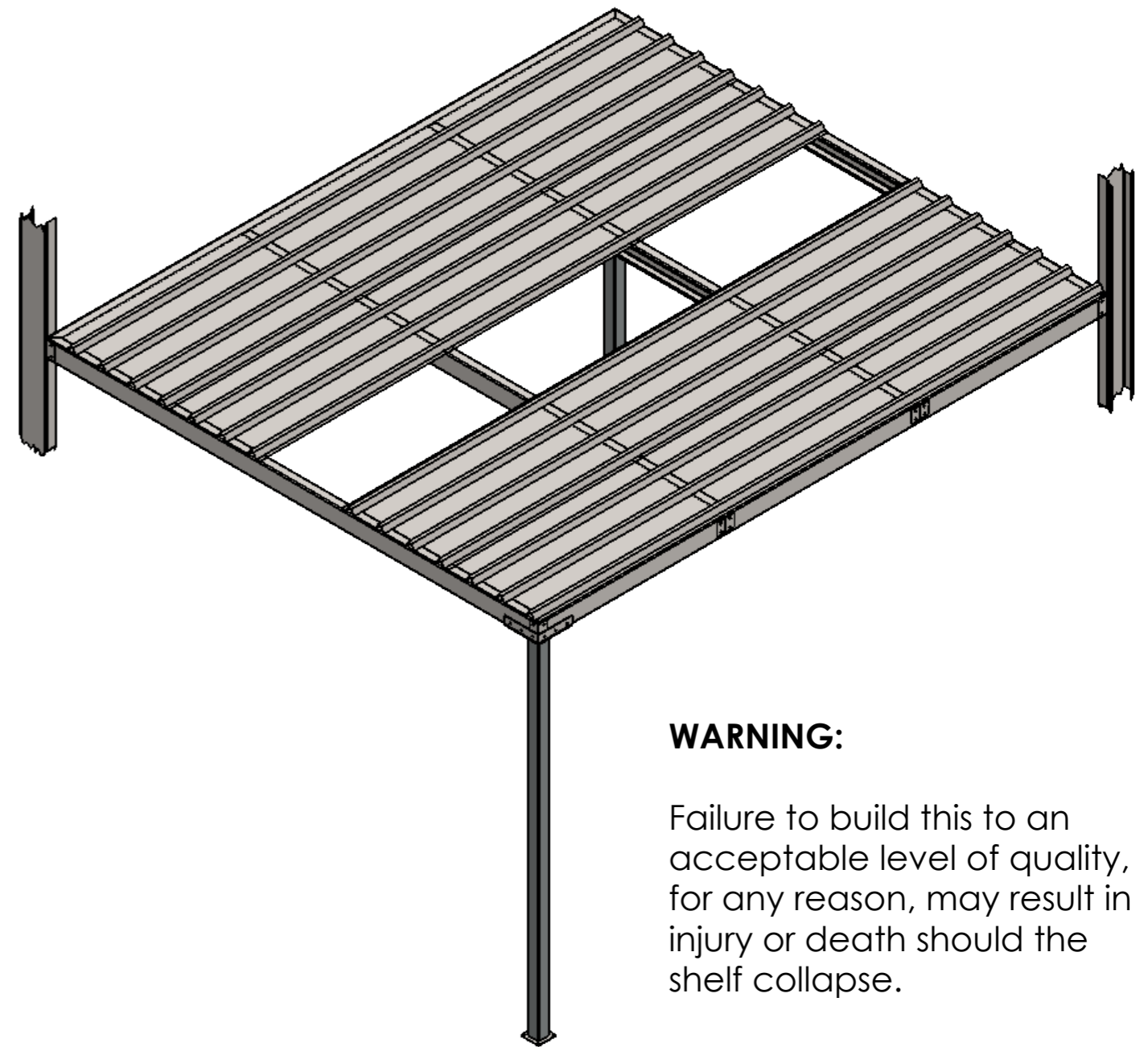
I have build this shelf and have had couple of tonnes of items stored, evenly distributed, on it. The beam deflection with this load was within what I deemed to be an acceptable level. I believe it could hold even more although I have not tried it and probably never will.

Be warned that I am not an engineer and there has been very little in the way of strength analysis done on this. It is all eyeball engineering.

I provide the plans as an example of something that has worked for me. They are provided for educational purposes only. I want to stress in the strongest possible terms that if you choose to build something from these plans then all consequences, both good and bad, are on you.

I have no control of the quality of construction nor the modifications you may make to the design. I take no responsibility for anything you choose to do with these plans.


If you do not fully understand everything above or if you do not fully agree with it then DO NOT USE THESE PLANS.

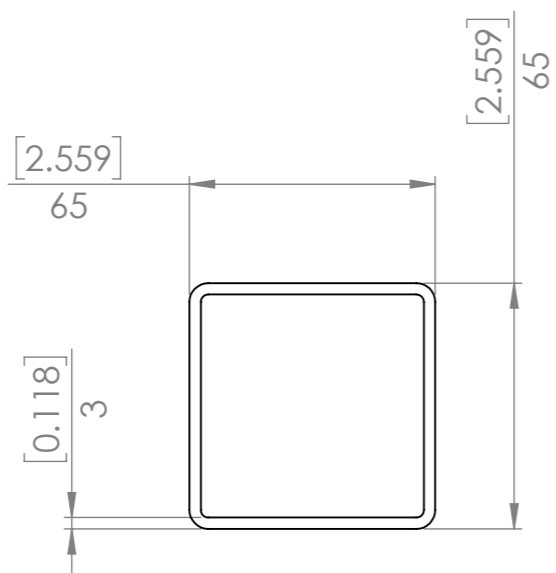
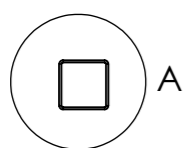
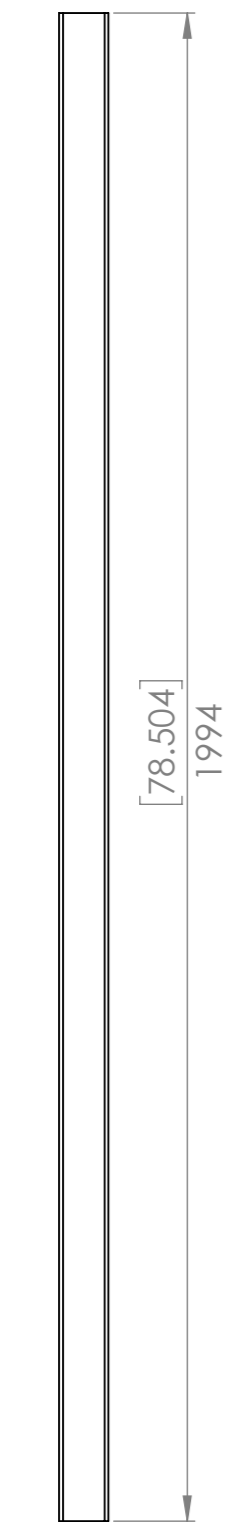


**WARNING:**

Failure to build this to an acceptable level of quality, for any reason, may result in injury or death should the shelf collapse.


QTY.	PART NUMBER	DESCRIPTION	MATERIAL	WEIGHT
2	p0041-001	Support Post	Plain Carbon Steel	11291.21
2	p0041-002	Post Foot	Plain Carbon Steel	251.32
2	p0041-003	Post Top L	Plain Carbon Steel	419.37
2	p0041-004	Post Top R	Plain Carbon Steel	419.37
2	p0041-005	Post Top Plug	Plain Carbon Steel	5.14
2	p0041-006	Purlin Short Mitre		9256.09
2	p0041-007	Purlin Long Mitre		10697.02
2	p0041-008	Purlin Cross Member		9027.52
4	p0041-009	Corner Bracket	Plain Carbon Steel	193.66
8	p0041-010	Angle Bracket	Plain Carbon Steel	156.02
8	p0041-011	Bracket Extension	Plain Carbon Steel	157.13
2	p0041-012	Shelf Sheet	Plain Carbon Steel	16834.68

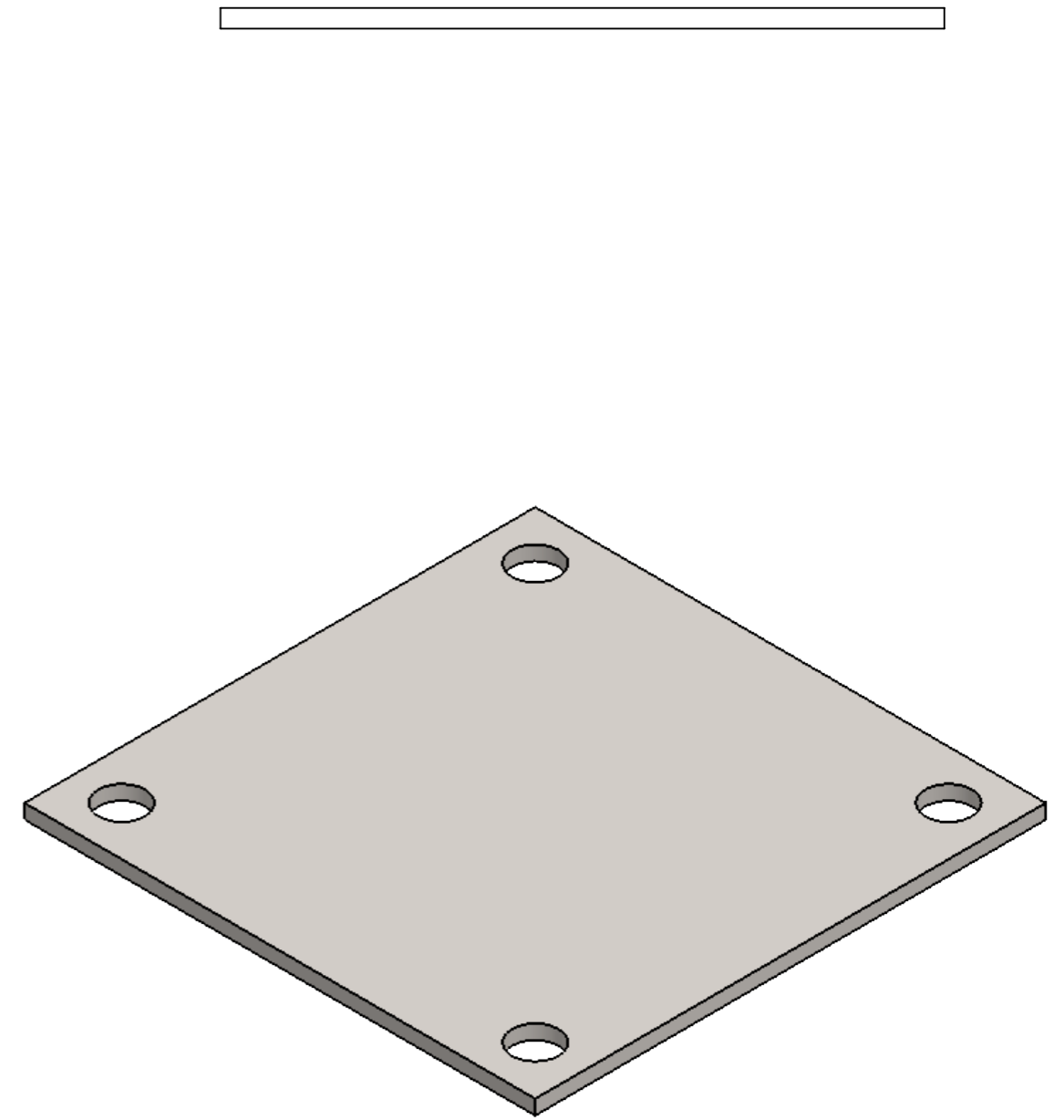
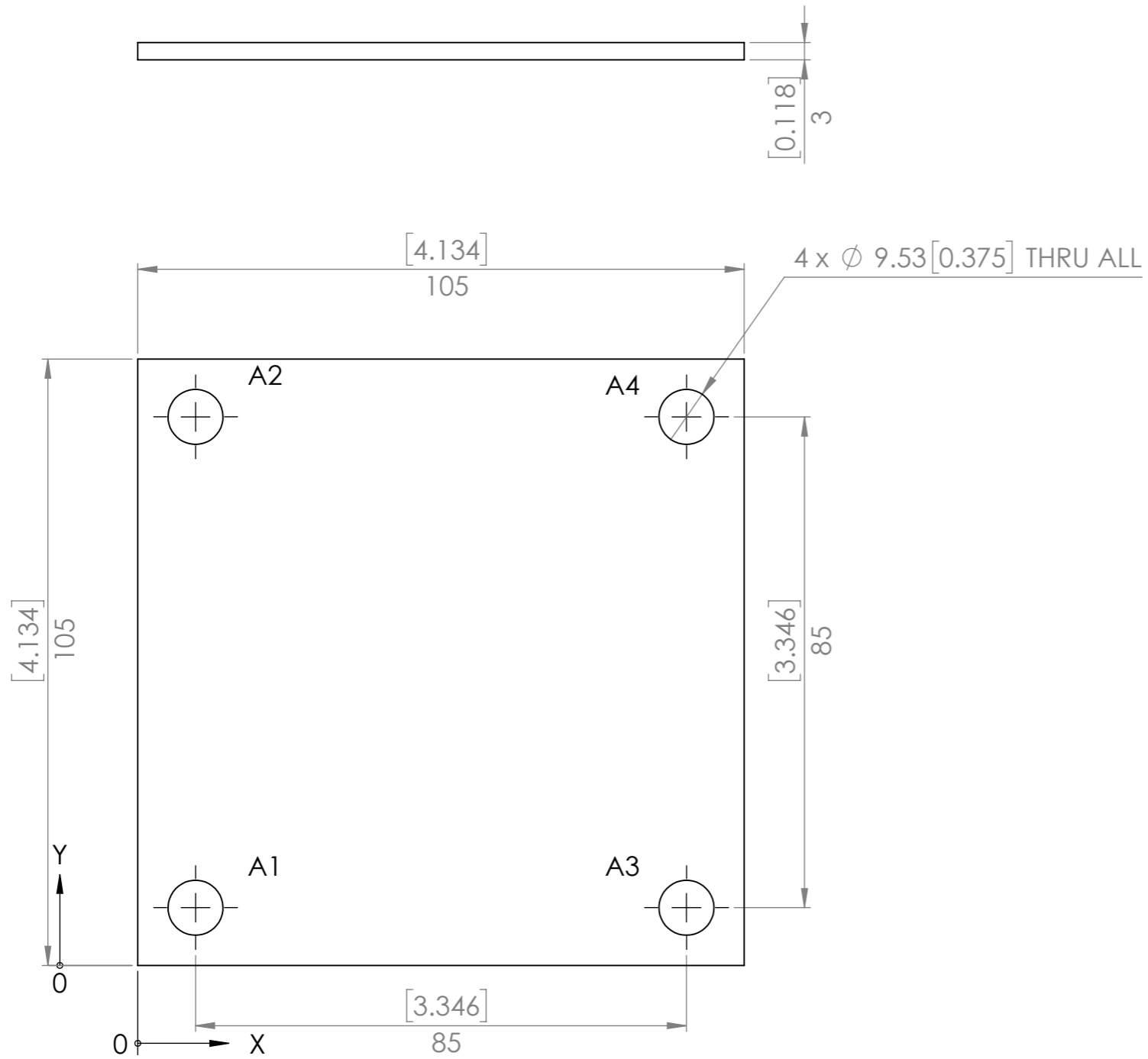
UNLESS OTHERWISE SPECIFIED: DIMENSIONS ARE IN MILLIMETERS		FINISH: As specified		DEBUR AND BREAK SHARP EDGES		DO NOT SCALE DRAWING		REVISION B	
TOLERANCES: LINEAR: +/- 1mm ANGULAR: +/- 1degree						<b>Designed 2 Build</b>  <b>Mezzanine Shelf</b>			
DRAWN Merlin		DATE 2016-12-05		STOCK: STOCK SIZE:					
Q.A Merlin		DATE 2016-12-18				PART NO. p0041		A3	
				MATERIAL: Assembly		SCALE:1:25		WEIGHT: 161591.36 SHEET 1 OF 20	




DETAIL A  
SCALE 1 : 2

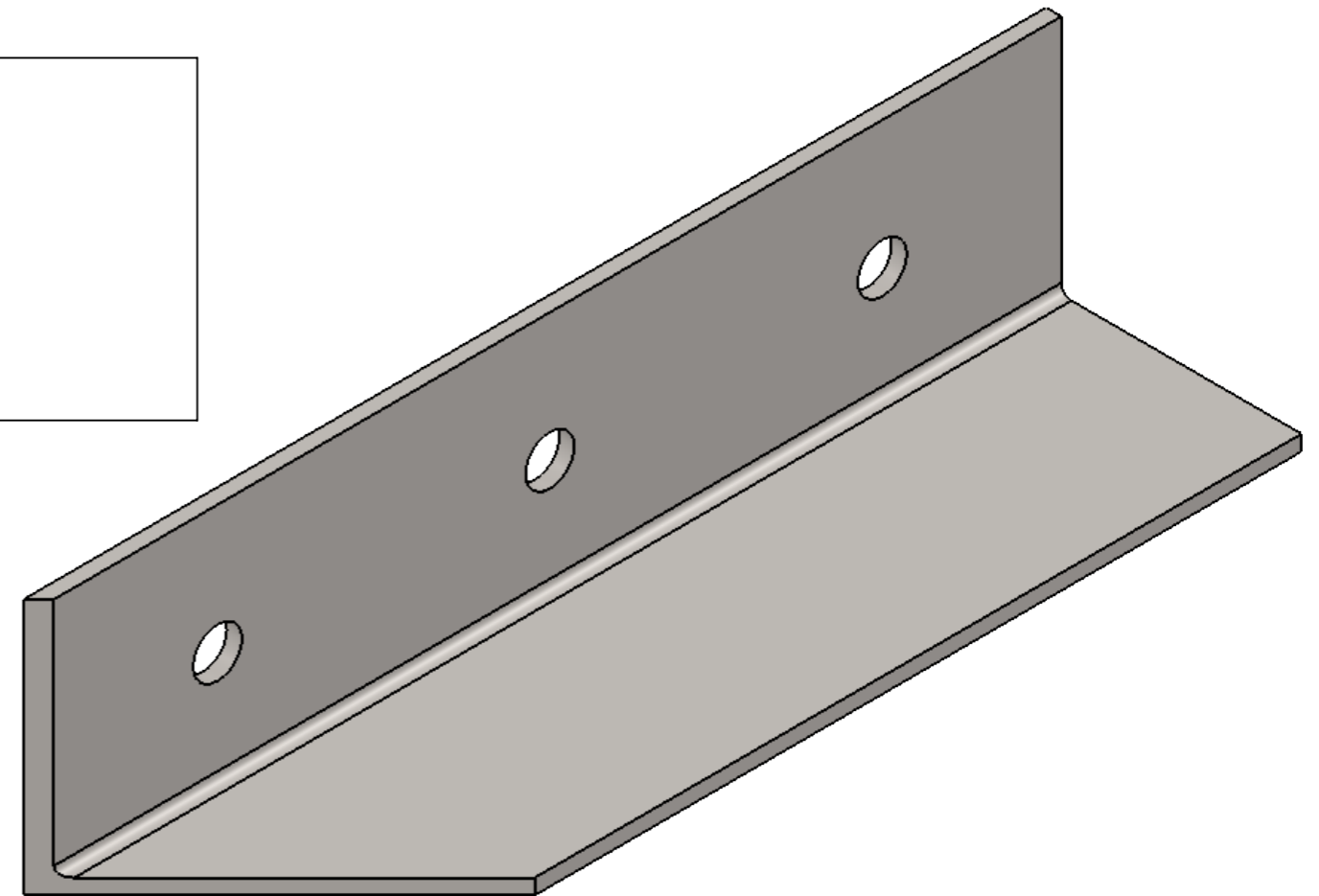
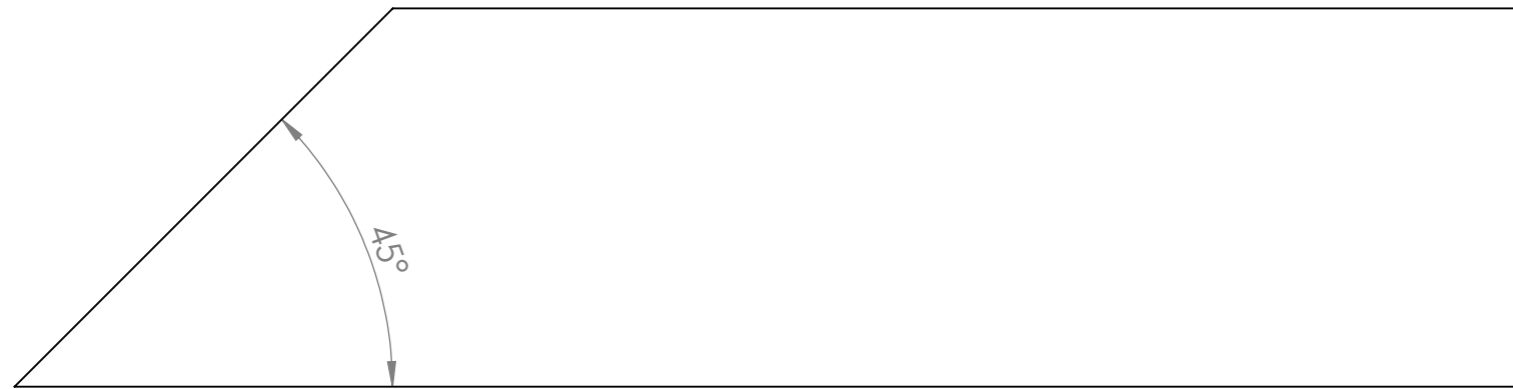
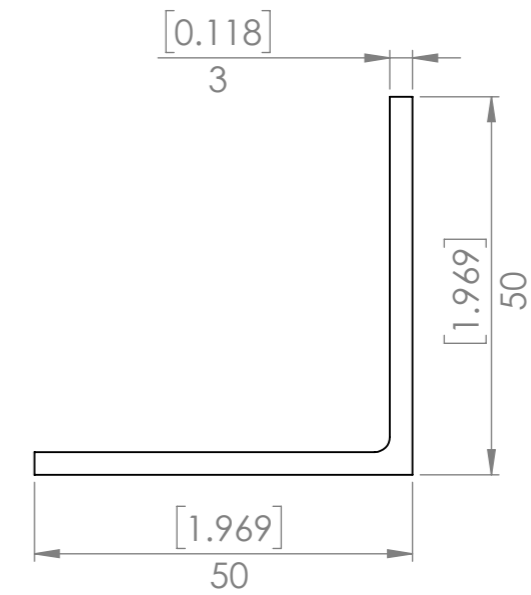
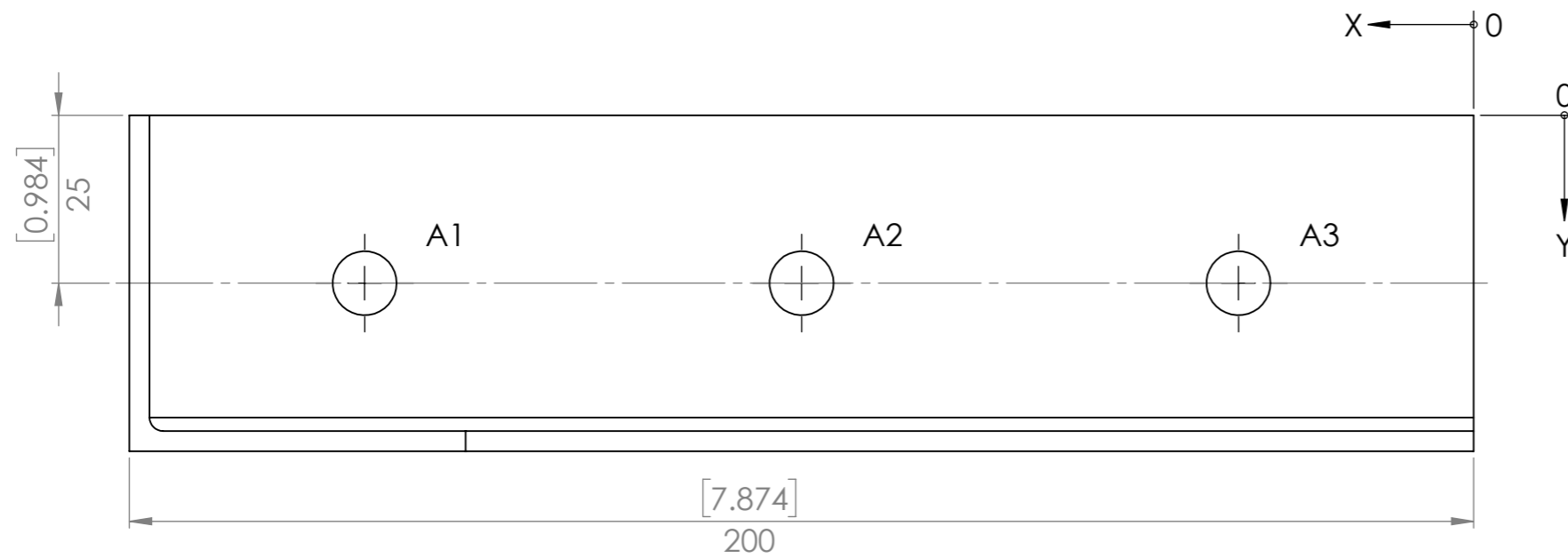


UNLESS OTHERWISE SPECIFIED: DIMENSIONS ARE IN MILLIMETERS		FINISH:		DEBUR AND BREAK SHARP EDGES		DO NOT SCALE DRAWING		REVISION A	
TOLERANCES: LINEAR: +/- 1mm ANGULAR: +/- 1degree						<h2>Designed 2 Build</h2> <h3>Support Post</h3>			
DRAWN	Merlin	DATE	2016-12-05	STOCK:	SHS				
Q.A	Merlin	DATE	2016-12-18	STOCK SIZE:	65mm x 65mm x 3mm				
				MATERIAL:		PART NO.			
				Plain Carbon Steel		p0041-001		A3	
				WEIGHT: 11291.21		SCALE:1:10		SHEET 2 OF 20	




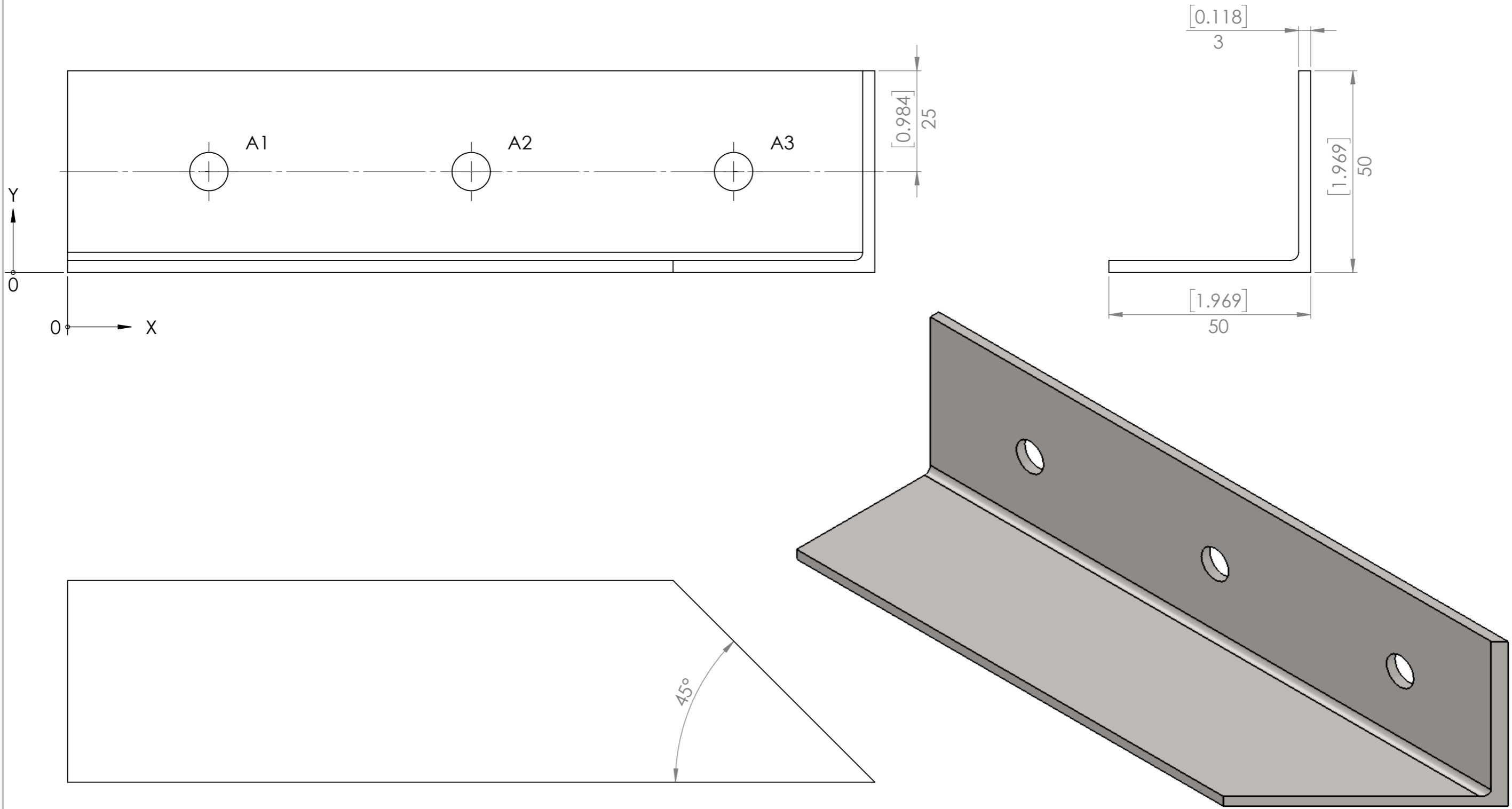
TAG	X LOC	Y LOC	SIZE
A1	[0.39] 10	[0.39] 10	Ø 9.53 THRU ALL
A2	[0.39] 10	[3.74] 95	Ø 9.53 THRU ALL
A3	[3.74] 95	[0.39] 10	Ø 9.53 THRU ALL
A4	[3.74] 95	[3.74] 95	Ø 9.53 THRU ALL

UNLESS OTHERWISE SPECIFIED: DIMENSIONS ARE IN MILLIMETERS		FINISH:		DEBUR AND BREAK SHARP EDGES		DO NOT SCALE DRAWING		REVISION A	
TOLERANCES: LINEAR: +/- 1mm ANGULAR: +/- 1degree						<h2>Designed 2 Build</h2> <h1>Post Foot</h1>			
DRAWN Merlin		DATE 2016-12-05		STOCK: Sheet		TITLE:			
Q.A Merlin		DATE 2016-12-18		STOCK SIZE: 4mm					
		MATERIAL:		PART NO.					
		Plain Carbon Steel		p0041-002		A3			
WEIGHT: 251.32		SCALE: 1:1		SHEET 3 OF 20					




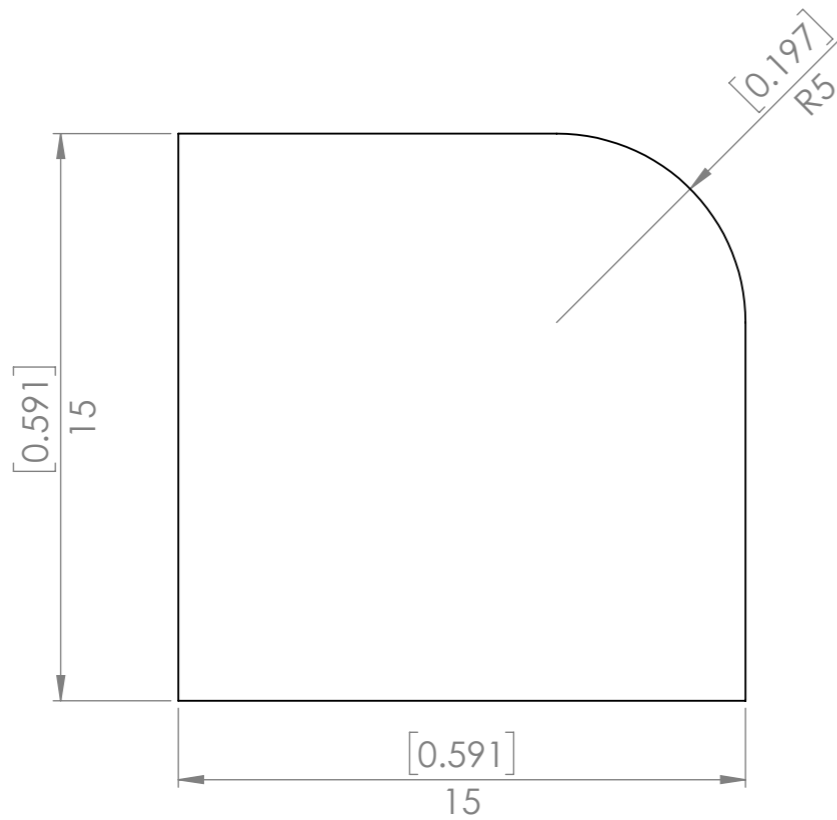
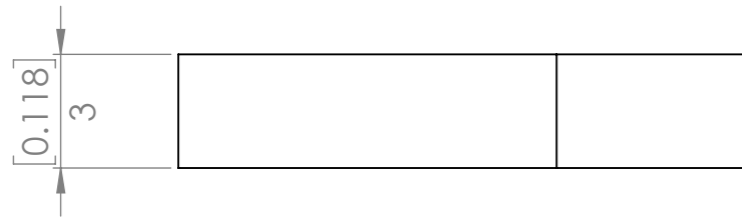
TAG	X LOC	Y LOC	SIZE
A1	[6.50] 165	[0.98] 25	$\phi$ [0.375] 9.53 THRU ALL
A2	[3.94] 100	[0.98] 25	$\phi$ [0.375] 9.53 THRU ALL
A3	[1.38] 35	[0.98] 25	$\phi$ [0.375] 9.53 THRU ALL

UNLESS OTHERWISE SPECIFIED: DIMENSIONS ARE IN MILLIMETERS		FINISH:		DEBUR AND BREAK SHARP EDGES		DO NOT SCALE DRAWING		REVISION B			
TOLERANCES: LINEAR: +/- 1mm ANGULAR: +/- 1degree						<b>Designed 2 Build</b>  <b>Post Top L</b>					
DRAWN Merlin		DATE 2016-12-05		STOCK: Angle				TITLE:			
Q.A Merlin		DATE 2016-12-18		STOCK SIZE: 50mm x 50mm x 3mm							
				MATERIAL: Plain Carbon Steel		PART NO. p0041-003		A3			
				WEIGHT: 419.37		SCALE: 1:1		SHEET 4 OF 20			

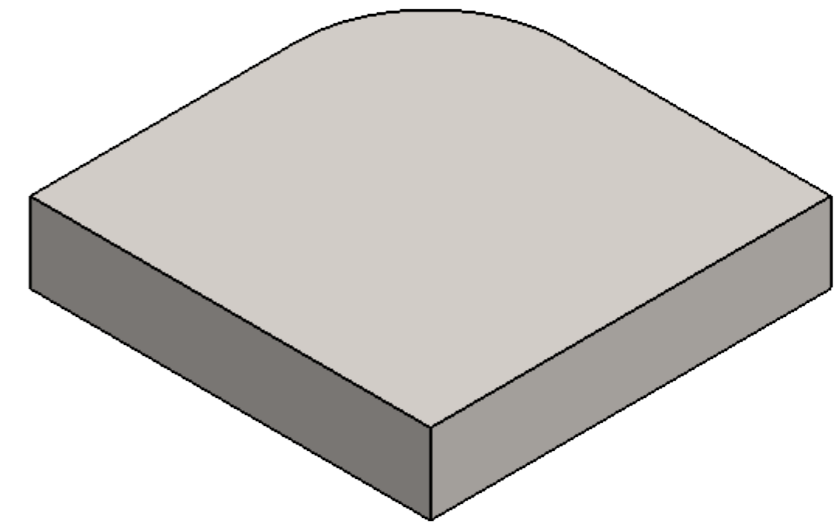



TAG	X LOC	Y LOC	SIZE
A1	[1.38] 35	[0.98] 25	∅ [0.375] 9.53 THRU ALL
A2	[3.94] 100	[0.98] 25	∅ [0.375] 9.53 THRU ALL
A3	[6.50] 165	[0.98] 25	∅ [0.375] 9.53 THRU ALL

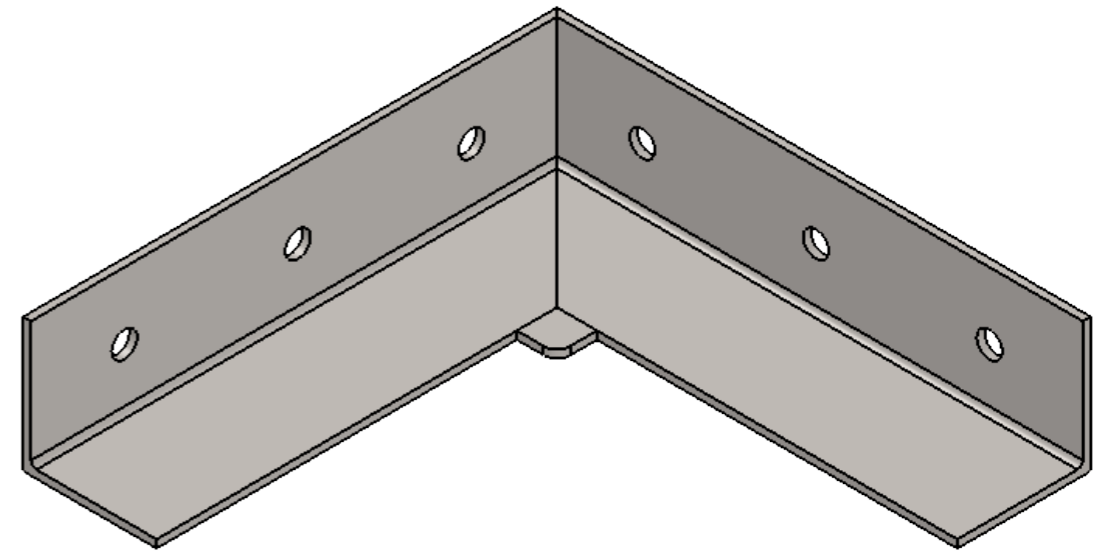
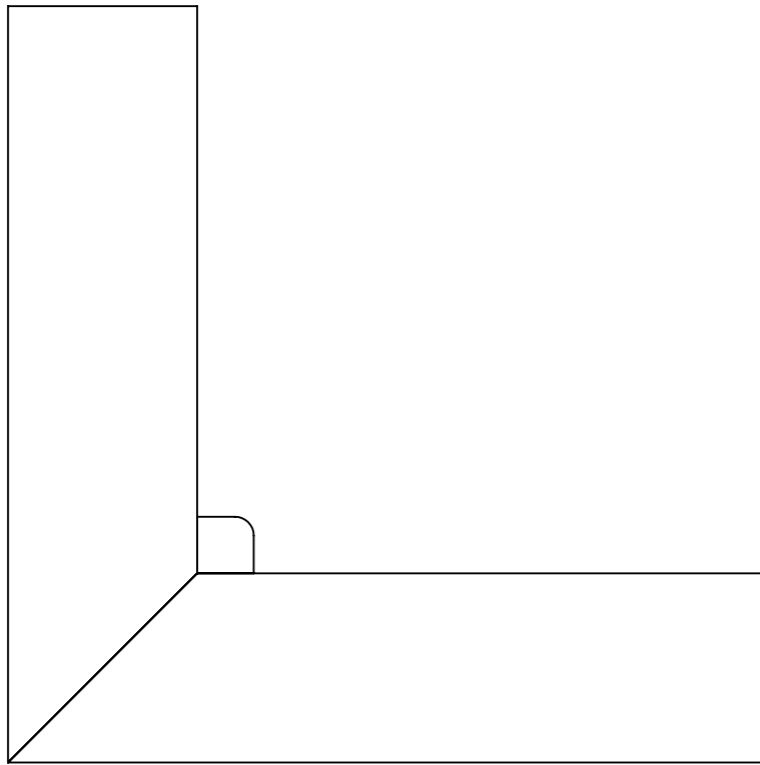
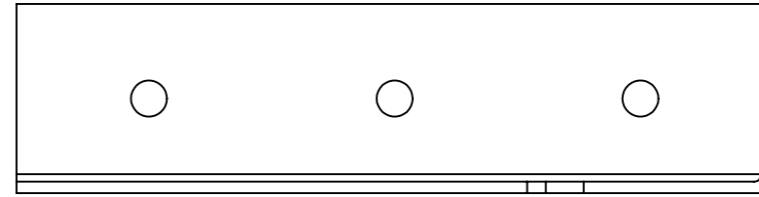
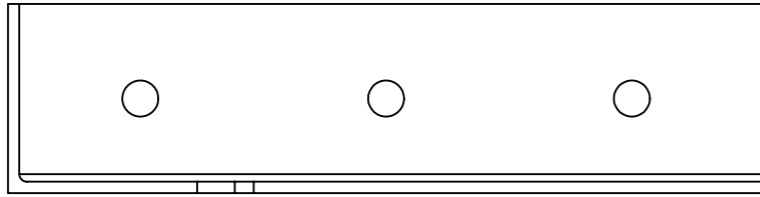
UNLESS OTHERWISE SPECIFIED: DIMENSIONS ARE IN MILLIMETERS		FINISH:		DEBUR AND BREAK SHARP EDGES		DO NOT SCALE DRAWING		REVISION B	
TOLERANCES: LINEAR: +/- 1mm ANGULAR: +/- 1degree						TITLE: <b>Designed 2 Build</b>		PART NO. <b>p0041-004</b>	
DRAWN Merlin		DATE 2016-12-05		STOCK: Angle					
Q.A Merlin		DATE 2016-12-18		STOCK SIZE: 50mm x 50mm x 3mm		SCALE:1:1		SHEET 5 OF 20	
				MATERIAL: Plain Carbon Steel					
				WEIGHT: 419.37				A3	



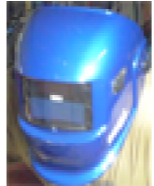
**TIP:**  
 This is simply to cover the corner of the RHS post.  
 Without it there is an opening into the interior of the post  
 and past experience tells me that wasps will use that to  
 make their nest. Covering it up is simple self preservation.

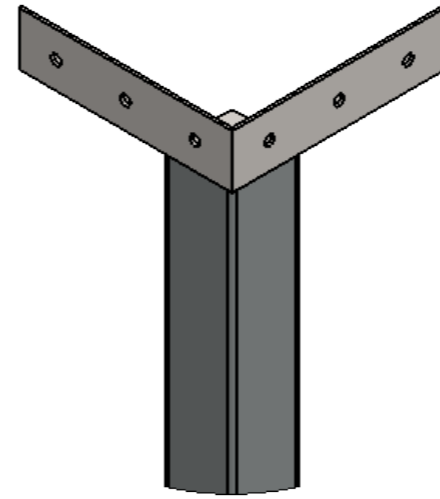
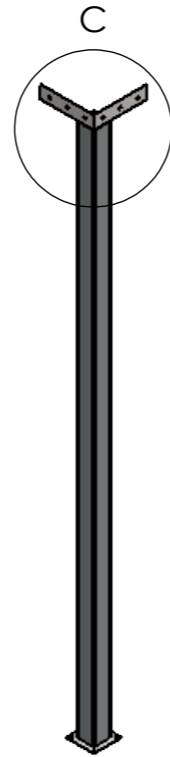
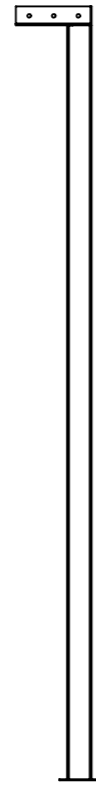
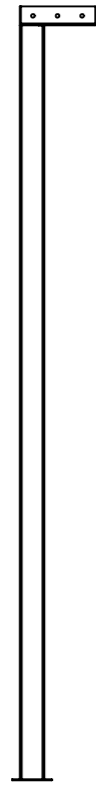


UNLESS OTHERWISE SPECIFIED: DIMENSIONS ARE IN MILLIMETERS		FINISH:		DEBUR AND BREAK SHARP EDGES		DO NOT SCALE DRAWING		REVISION A	
TOLERANCES: LINEAR: +/- 1mm ANGULAR: +/- 1degree						<h2>Designed 2 Build</h2> <h3>Post Top Plug</h3>			
	NAME	DATE		STOCK:	Sheet				
DRAWN	Merlin	2016-12-05		STOCK SIZE:	3mm				
Q.A	Merlin	2016-12-18							
				MATERIAL:		PART NO.		A3	
				Plain Carbon Steel		p0041-005			
				WEIGHT: 5.14		SCALE:5:1		SHEET 6 OF 20	

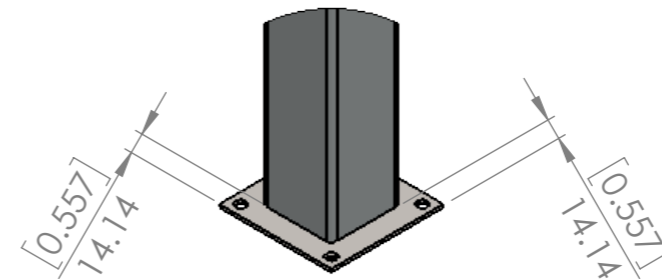
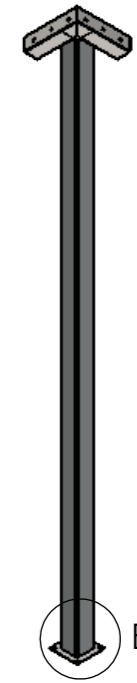


QTY.	PART NUMBER	DESCRIPTION	MATERIAL	WEIGHT
1	p0041-003	Post Top L	Plain Carbon Steel	419.37
1	p0041-004	Post Top R	Plain Carbon Steel	419.37
1	p0041-005	Post Top Plug	Plain Carbon Steel	5.14

UNLESS OTHERWISE SPECIFIED: DIMENSIONS ARE IN MILLIMETERS		FINISH: <b>Bare</b>		DEBUR AND BREAK SHARP EDGES		DO NOT SCALE DRAWING		REVISION <b>B</b>	
TOLERANCES: LINEAR: +/- 1mm ANGULAR: +/- 1degree						<b>Designed 2 Build</b>			
DRAWN Merlin		DATE 2016=12=05		STOCK:		TITLE: <b>Post Cap</b>			
Q.A Merlin		2016-12-18		STOCK SIZE:					
		MATERIAL: <b>Assembly</b>		PART NO. <b>p0041-A01</b>		<b>A3</b>			
		WEIGHT: 843.89		SCALE:1:2		SHEET 7 OF 20			



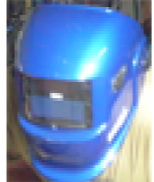
DETAIL C  
SCALE 1 : 5



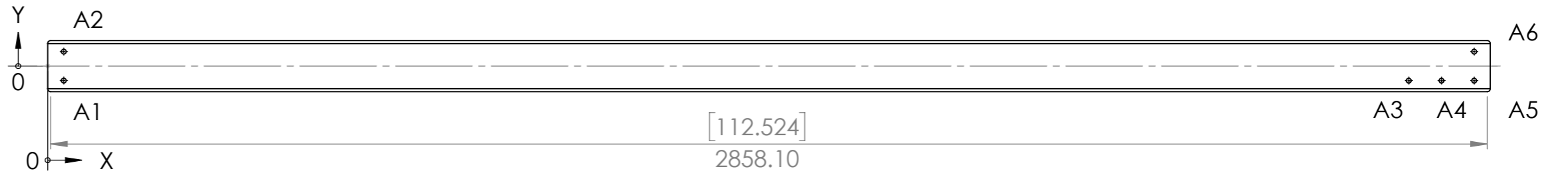
DETAIL B  
SCALE 1 : 5



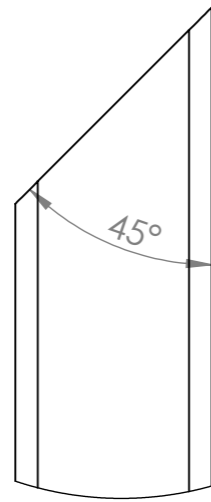
QTY.	PART NUMBER	DESCRIPTION	MATERIAL	WEIGHT
1	p0041-001	Support Post	Plain Carbon Steel	11291.21
1	p0041-002	Post Foot	Plain Carbon Steel	251.32
1	p0041-A01	Post Cap	Assembly	843.89

UNLESS OTHERWISE SPECIFIED: DIMENSIONS ARE IN MILLIMETERS		FINISH:  Paint	DEBUR AND BREAK SHARP EDGES	DO NOT SCALE DRAWING	REVISION B
TOLERANCES: LINEAR: +/- 1mm ANGULAR: +/- 1degree				Designed 2 Build	
DRAWN Merlin	DATE 2016=12=05	STOCK:		TITLE: Corner Post	
Q.A Merlin	2016-12-18	STOCK SIZE:		PART NO. p0041-A02	
		MATERIAL: Assembly		SCALE:1:20	A3
		WEIGHT: 12386.41		SHEET 8 OF 20	

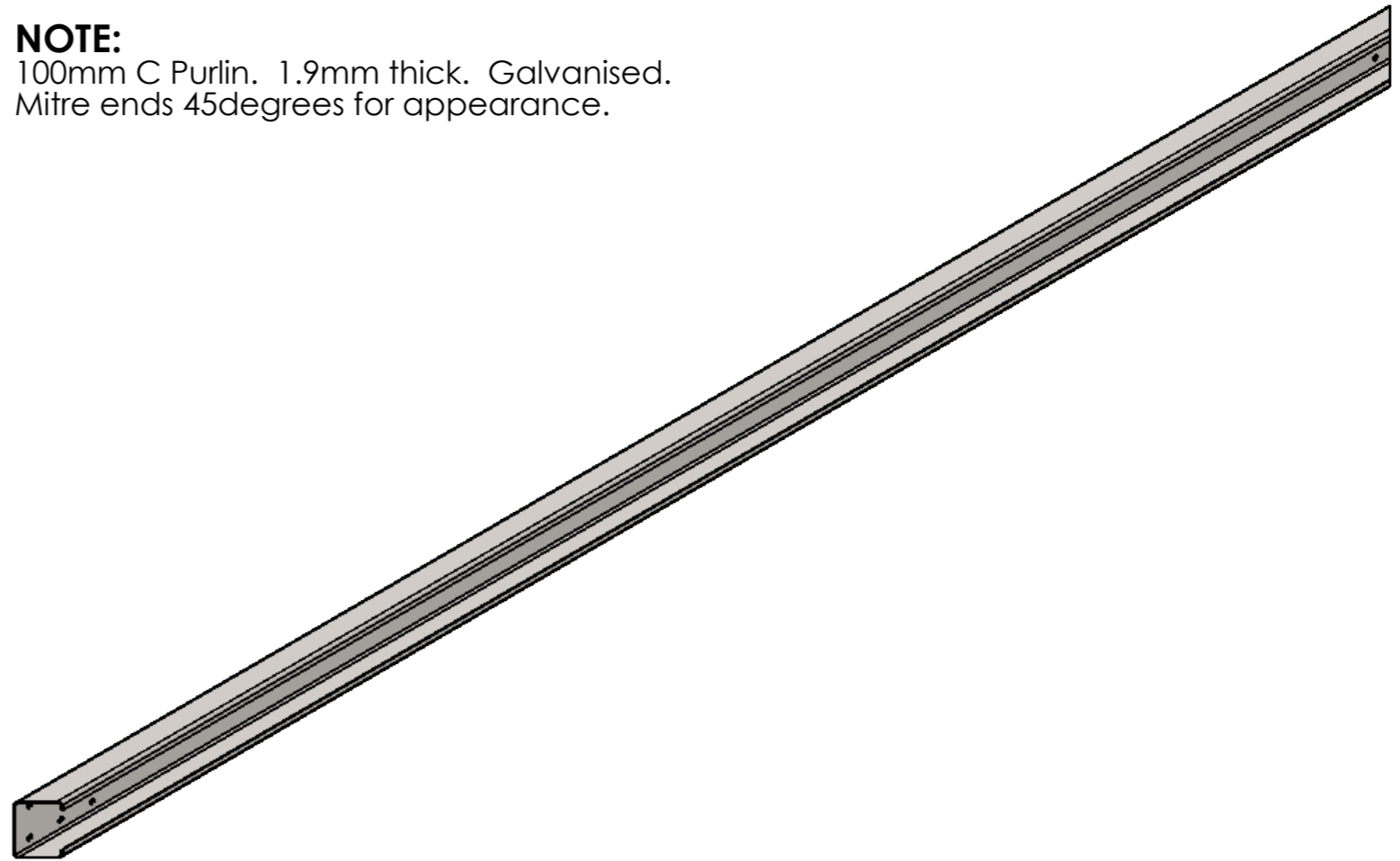




**NOTE:**  
 100mm C Purlin. 1.9mm thick. Galvanised.  
 Mitre ends 45degrees for appearance.



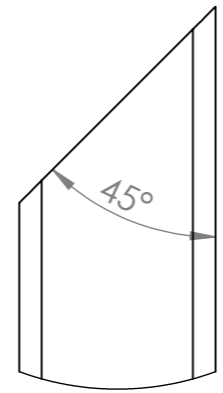
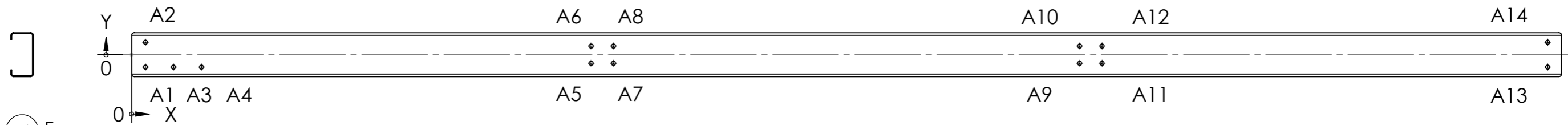
DETAIL D  
 SCALE 1 : 2



TAG	X LOC	Y LOC	SIZE
A1	[1.26] 32	[-1.14] -28.90	∅ [0.375] 9.53 THRU ALL
A2	[1.26] 32	[1.14] 28.90	∅ [0.375] 9.53 THRU ALL
A3	[106.61] 2708	[-1.14] -29	∅ [0.375] 9.53 THRU ALL
A4	[109.17] 2773	[-1.14] -29	∅ [0.375] 9.53 THRU ALL
A5	[111.73] 2838	[-1.14] -29	∅ [0.375] 9.53 THRU ALL
A6	[111.73] 2838	[1.14] 28.90	∅ [0.375] 9.53 THRU ALL

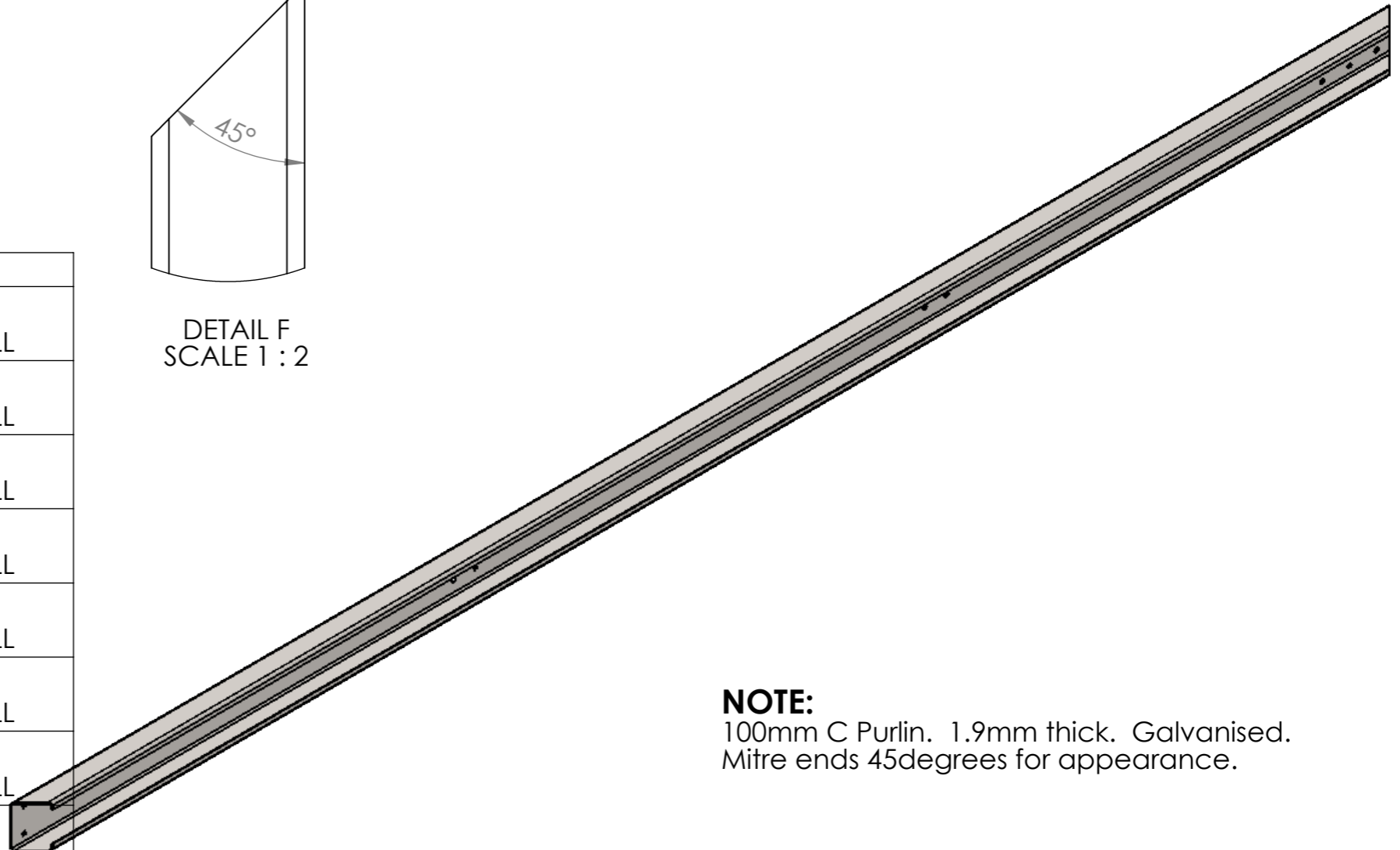
UNLESS OTHERWISE SPECIFIED: DIMENSIONS ARE IN MILLIMETERS		FINISH: Galvanised		DEBUR AND BREAK SHARP EDGES		DO NOT SCALE DRAWING		REVISION B		
TOLERANCES: LINEAR: +/- 1mm ANGULAR: +/- 1degree		STOCK: Purlin		TITLE: Purlin Short Mitre		PART NO. p0041-006		A3		
DRAWN	NAME Merlin	DATE 2016-12-05	STOCK SIZE: 100mm x 50mm x 1.9mm	MATERIAL:		WEIGHT: 9256.09		SCALE:1:10		
Q.A	NAME Merlin	DATE 2016-12-18	MATERIAL:		WEIGHT: 9256.09		SCALE:1:10		SHEET 9 OF 20	






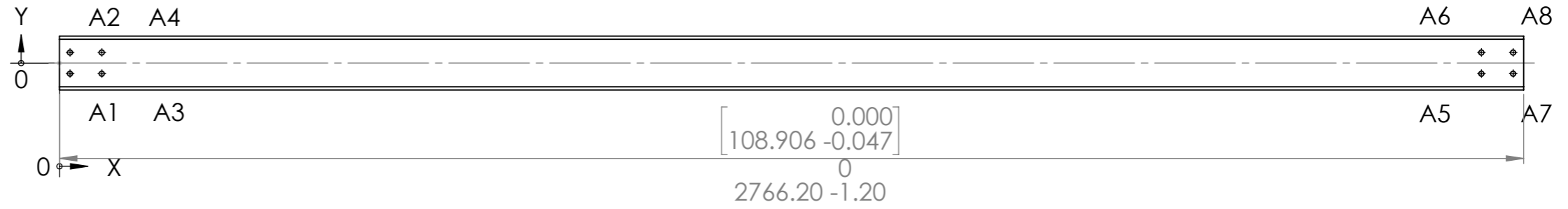
DETAIL F  
SCALE 1 : 2

TAG	X LOC	Y LOC	SIZE
A1	[1.26] 32	[-1.14] -28.95	∅ [0.375] 9.53 THRU ALL
A2	[1.26] 32	[1.14] 28.85	∅ [0.375] 9.53 THRU ALL
A3	[3.82] 97	[-1.14] -28.95	∅ [0.375] 9.53 THRU ALL
A4	[6.38] 162	[-1.14] -28.95	∅ [0.375] 9.53 THRU ALL
A5	[41.94] 1065.23	[-0.79] -20	∅ [0.375] 9.53 THRU ALL
A6	[41.94] 1065.23	[0.79] 20	∅ [0.375] 9.53 THRU ALL
A7	[43.98] 1117.13	[-0.79] -20	∅ [0.375] 9.53 THRU ALL
A8	[43.98] 1117.13	[0.79] 20	∅ [0.375] 9.53 THRU ALL
A9	[86.53] 2197.87	[-0.79] -20	∅ [0.375] 9.53 THRU ALL
A10	[86.53] 2197.87	[0.79] 20	∅ [0.375] 9.53 THRU ALL
A11	[88.57] 2249.77	[-0.79] -20	∅ [0.375] 9.53 THRU ALL
A12	[88.57] 2249.77	[0.79] 20	∅ [0.375] 9.53 THRU ALL
A13	[129.25] 3283	[-1.14] -28.95	∅ [0.375] 9.53 THRU ALL
A14	[129.25] 3283	[1.14] 28.85	∅ [0.375] 9.53 THRU ALL

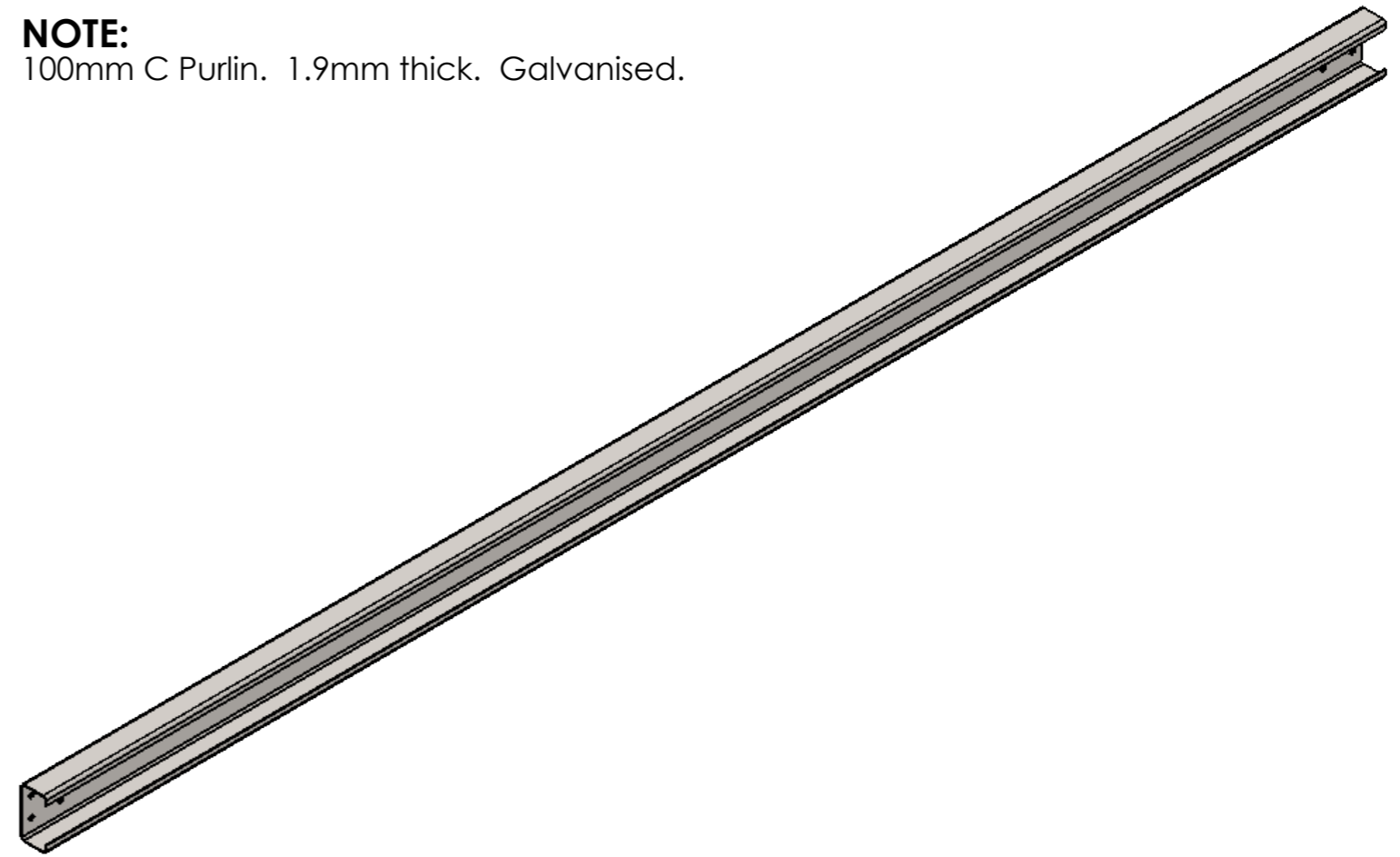


**NOTE:**  
100mm C Purlin. 1.9mm thick. Galvanised.  
Mitre ends 45degrees for appearance.

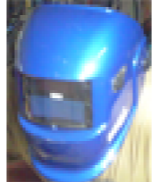
UNLESS OTHERWISE SPECIFIED: DIMENSIONS ARE IN MILLIMETERS		FINISH: Galvanised		DEBUR AND BREAK SHARP EDGES		DO NOT SCALE DRAWING		REVISION B	
TOLERANCES: LINEAR: +/- 1mm ANGULAR: +/- 1degree						<h2>Designed 2 Build</h2> <h3>Purlin Long Mitre</h3>			
NAME	DATE	STOCK:	Purlin		TITLE:				
DRAWN Merlin	2016-12-05	STOCK SIZE:	100mm x 50mm x 1.9mm						
Q.A Merlin	2016-12-18								
		MATERIAL:			PART NO.		p0041-007		
		WEIGHT: 10697.02			SCALE: 1:10		SHEET 10 OF 20		

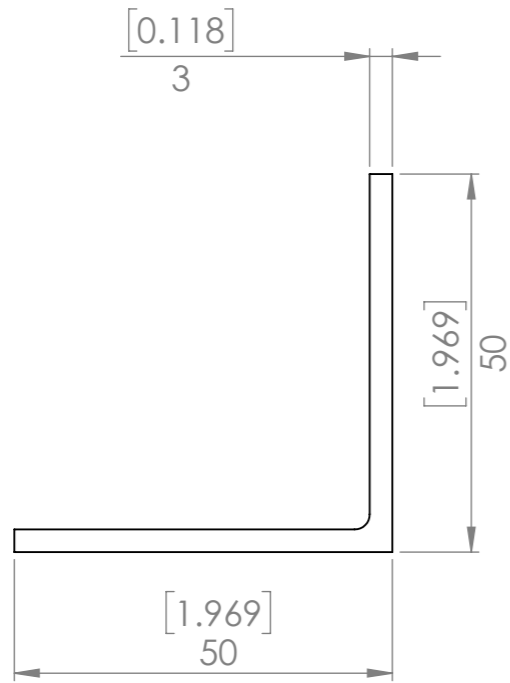
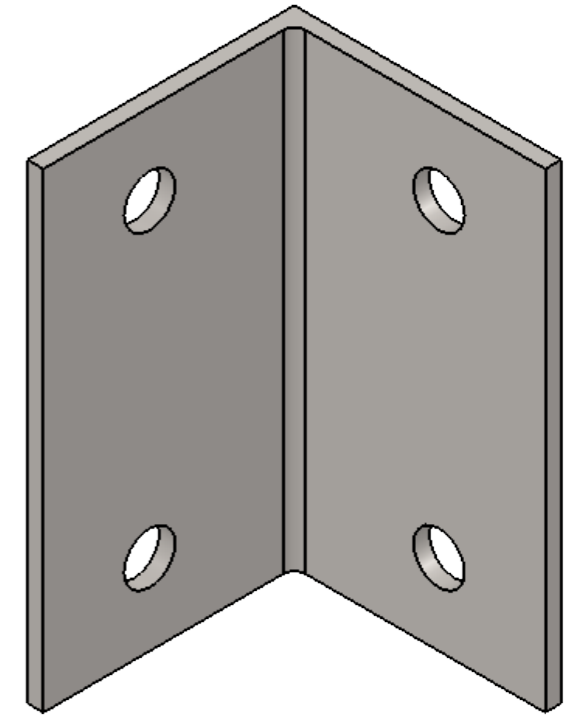
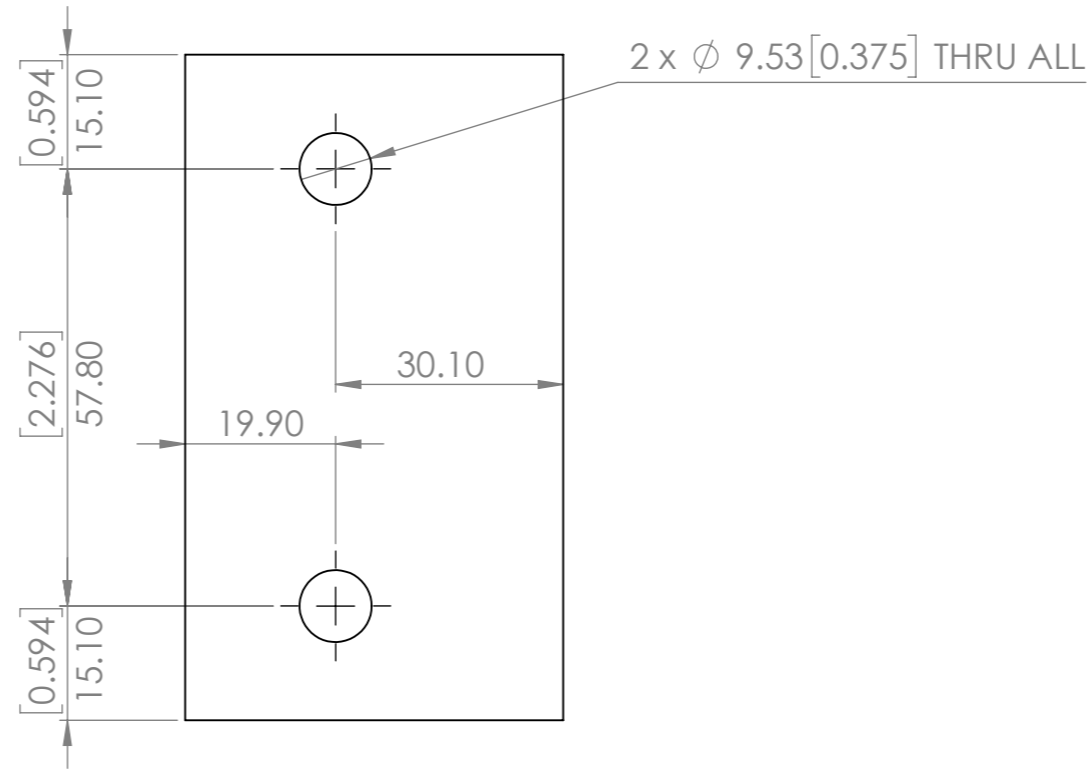
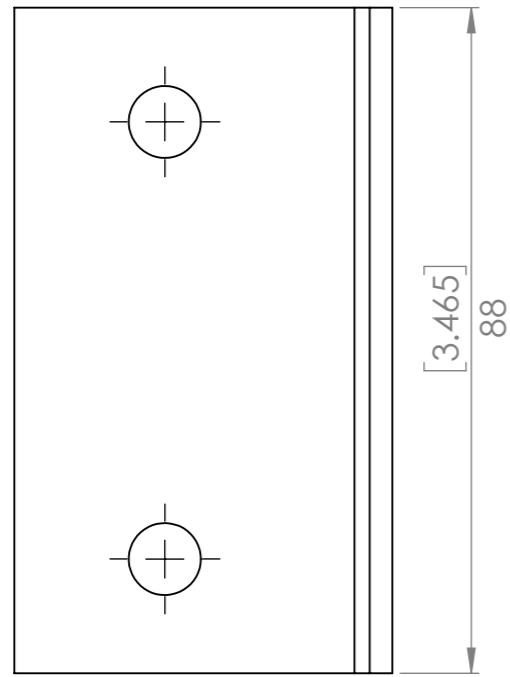



**NOTE:**  
100mm C Purlin. 1.9mm thick. Galvanised.



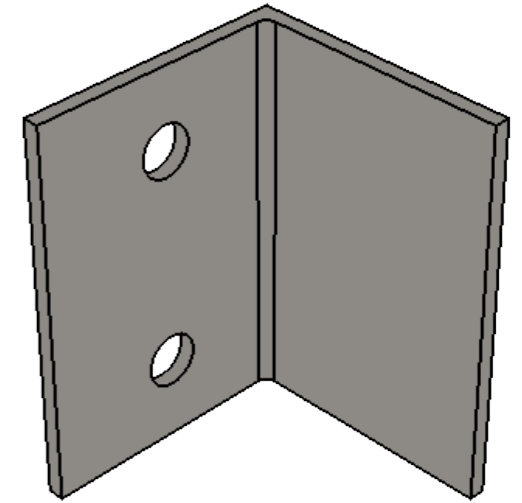
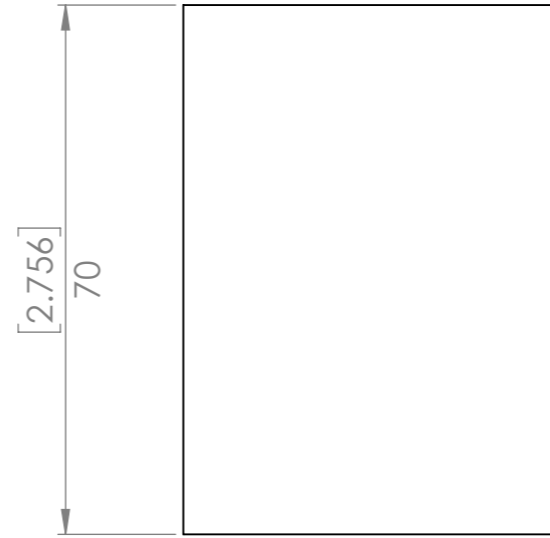
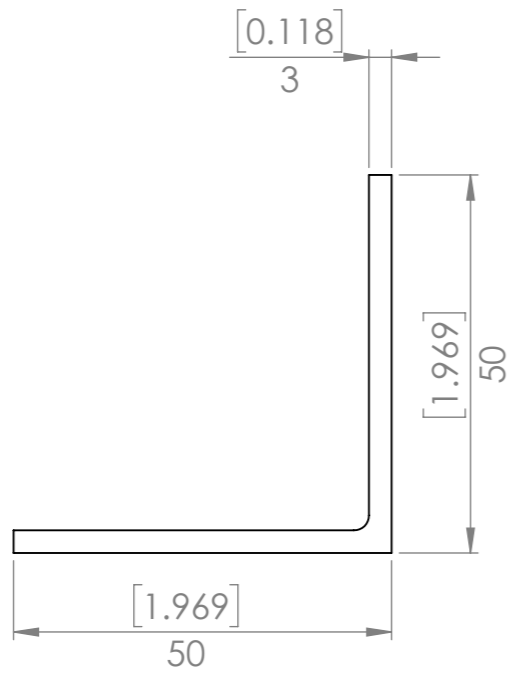
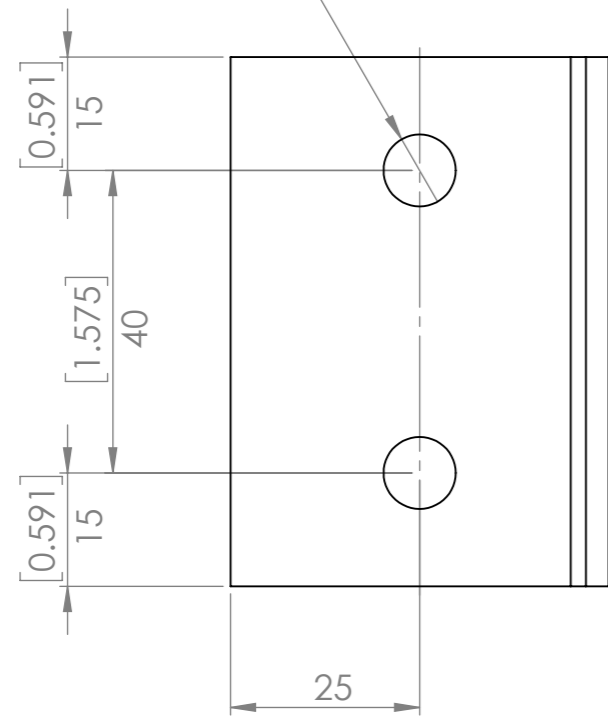
TAG	X LOC	Y LOC	SIZE
A1	[0.79] 20	[-0.79] -20	∅ [0.375] 9.53 THRU ALL
A2	[0.79] 20	[0.79] 20	∅ [0.375] 9.53 THRU ALL
A3	[3.15] 80	[-0.79] -20	∅ [0.375] 9.53 THRU ALL
A4	[3.15] 80	[0.79] 20	∅ [0.375] 9.53 THRU ALL
A5	[105.76] 2686.20	[-0.79] -20	∅ [0.375] 9.53 THRU ALL
A6	[105.76] 2686.20	[0.79] 20	∅ [0.375] 9.53 THRU ALL
A7	[108.12] 2746.20	[-0.79] -20	∅ [0.375] 9.53 THRU ALL
A8	[108.12] 2746.20	[0.79] 20	∅ [0.375] 9.53 THRU ALL

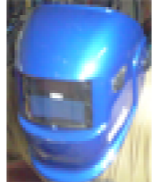
UNLESS OTHERWISE SPECIFIED: DIMENSIONS ARE IN MILLIMETERS		FINISH: Galvanised		DEBUR AND BREAK SHARP EDGES		DO NOT SCALE DRAWING		REVISION B	
TOLERANCES: LINEAR: +/- 1mm ANGULAR: +/- 1degree						<b>Designed 2 Build</b>  <b>Purlin Cross Member</b>			
DRAWN Merlin		DATE 2016-12-05		STOCK: Purlin					
Q.A Merlin		DATE 2016-12-18		STOCK SIZE: 100mm x 50mm x 1.9mm		PART NO. p0041-008		A3	
				MATERIAL:		WEIGHT: 9027.52		SCALE: 1:10	
						SHEET 11 OF 20			

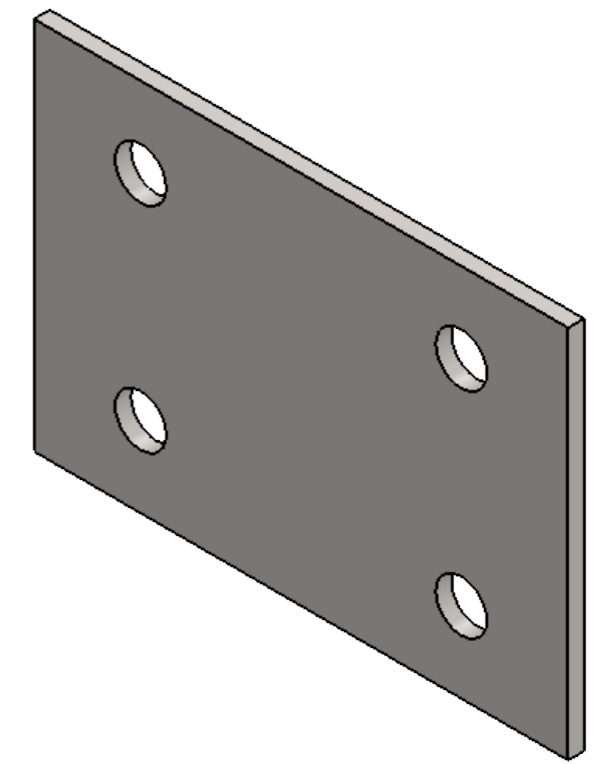
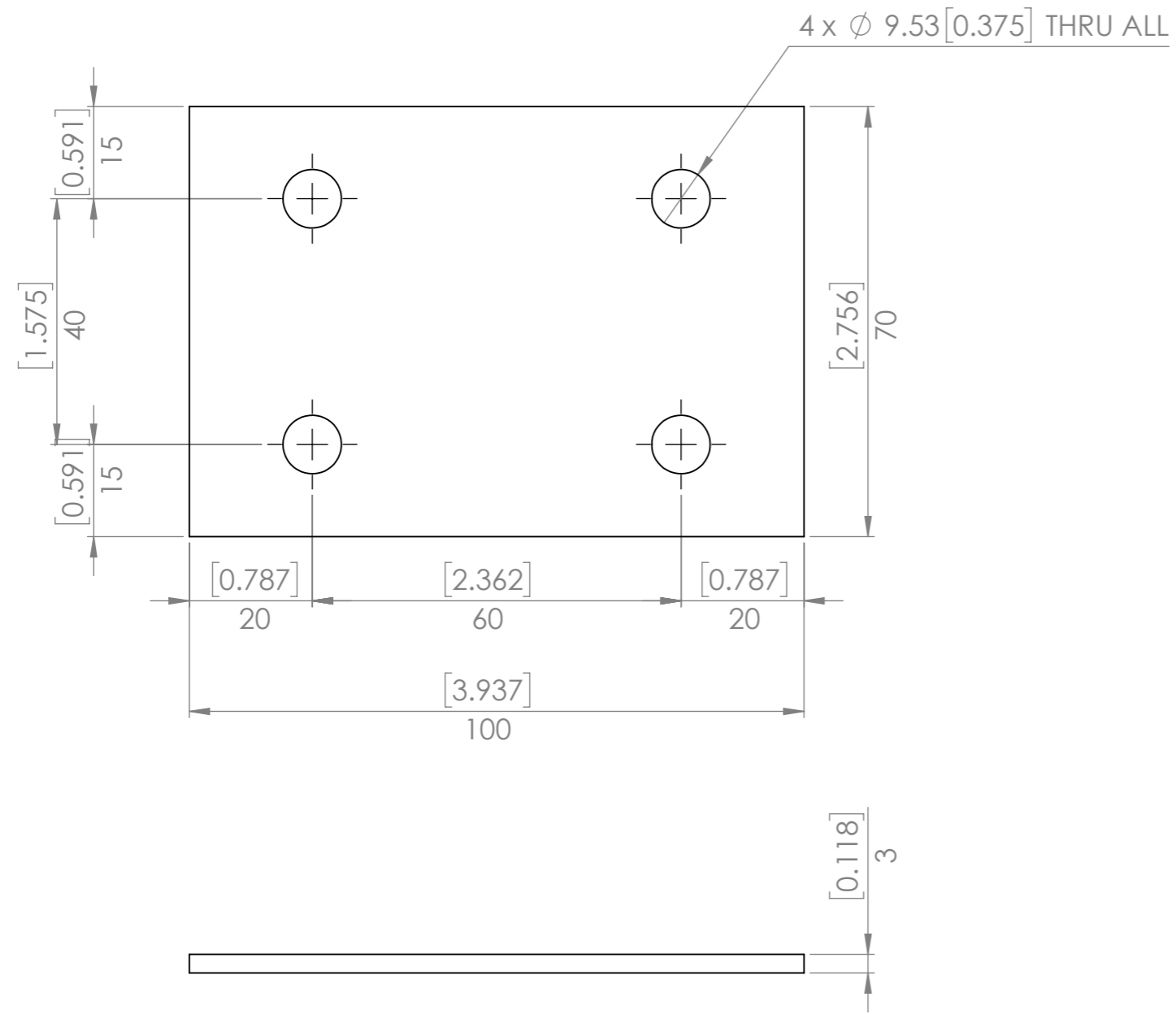



UNLESS OTHERWISE SPECIFIED: DIMENSIONS ARE IN MILLIMETERS		FINISH: Paint		DEBUR AND BREAK SHARP EDGES		DO NOT SCALE DRAWING		REVISION B	
TOLERANCES: LINEAR: +/- 1mm ANGULAR: +/- 1degree						Designed 2 Build  Corner Bracket			
DRAWN Merlin		DATE 2016-12-05		STOCK: Angle		TITLE:			
Q.A Merlin		2016-12-18		STOCK SIZE: 50mm x 50mm x 3mm					
				MATERIAL: Plain Carbon Steel		PART NO. p0041-009		A3	
				WEIGHT: 193.66		SCALE: 1:1		SHEET 12 OF 20	

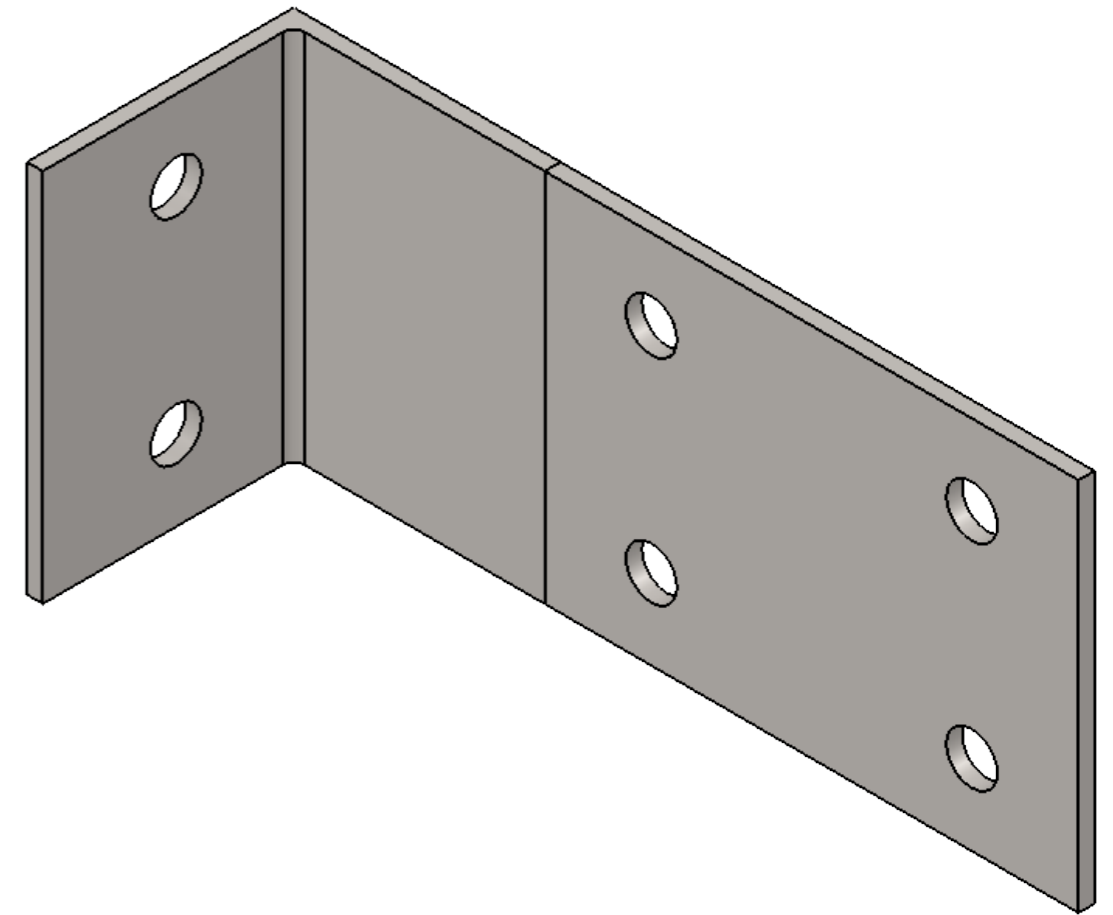
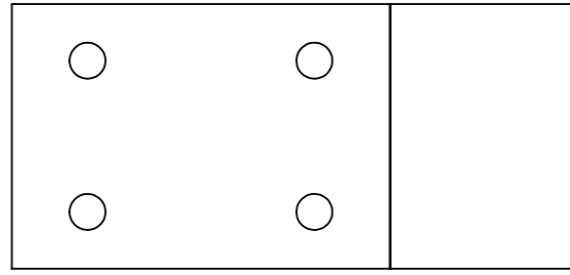
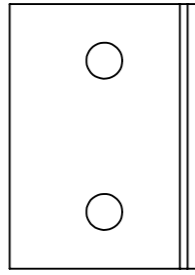
2 x  $\phi$  9.53 THRU ALL



UNLESS OTHERWISE SPECIFIED: DIMENSIONS ARE IN MILLIMETERS		FINISH:		DEBUR AND BREAK SHARP EDGES		DO NOT SCALE DRAWING		REVISION B	
TOLERANCES: LINEAR: +/- 1mm ANGULAR: +/- 1degree						<h2>Designed 2 Build</h2> <h3>Angle Bracket</h3>			
DRAWN Merlin		DATE 2016-12-05		STOCK: Angle		TITLE:			
Q.A Merlin		DATE 2016-12-18		STOCK SIZE: 50mm x 50mm x 3mm					
				MATERIAL: Plain Carbon Steel		PART NO. p0041-010		A3	
				WEIGHT: 156.02		SCALE: 1:1		SHEET 13 OF 20	




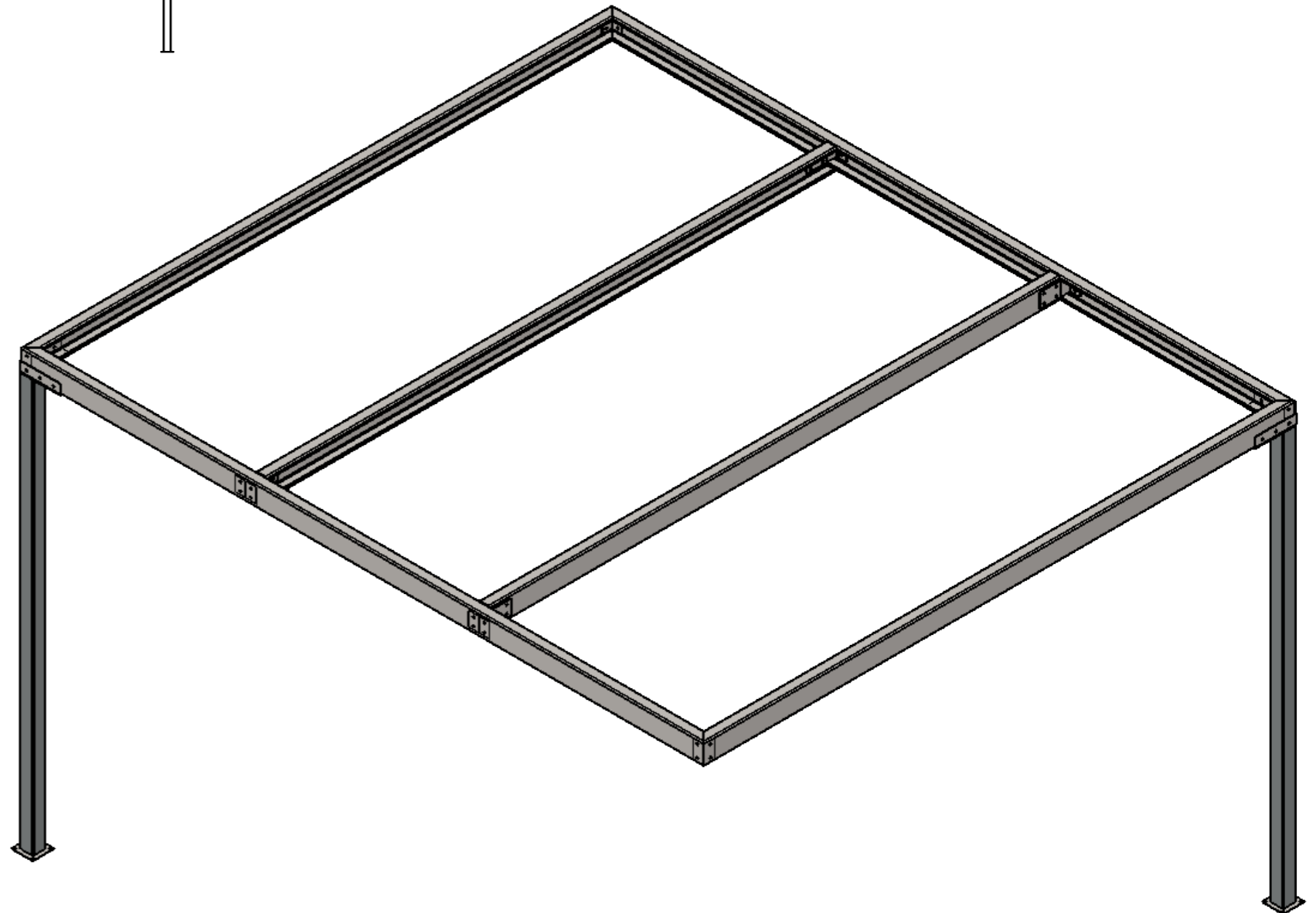
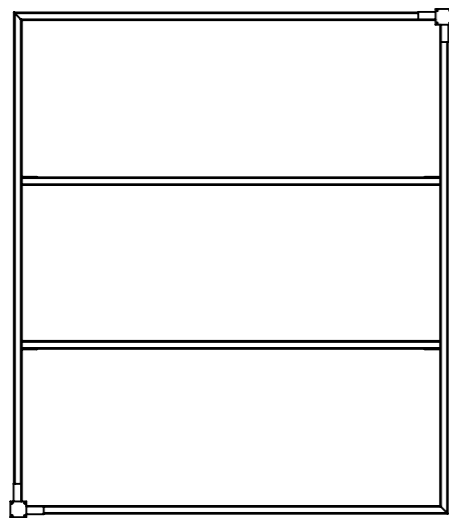
UNLESS OTHERWISE SPECIFIED: DIMENSIONS ARE IN MILLIMETERS		FINISH:		DEBUR AND BREAK SHARP EDGES		DO NOT SCALE DRAWING		REVISION B	
TOLERANCES: LINEAR: +/- 1mm ANGULAR: +/- 1degree						Designed 2 Build			
DRAWN Merlin		DATE 2016-12-05		STOCK: Sheet		Bracket Extension			
Q.A Merlin		DATE 2016-12-18		STOCK SIZE: 3mm					
				MATERIAL: Plain Carbon Steel		PART NO. p0041-011		A3	
				WEIGHT: 157.13		SCALE: 1:1		SHEET 14 OF 20	



**NOTE:**  
 Weld the two parts together.  
 Load bearing so weld needs to be strong.  
 Reinforce with a backing plate if in doubt.

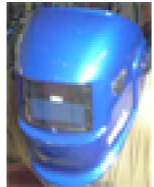
QTY.	PART NUMBER	DESCRIPTION	MATERIAL	WEIGHT
1	p0041-010	Angle Bracket	Plain Carbon Steel	156.02
1	p0041-011	Bracket Extension	Plain Carbon Steel	157.13

UNLESS OTHERWISE SPECIFIED: DIMENSIONS ARE IN MILLIMETERS		FINISH: Paint		DEBUR AND BREAK SHARP EDGES		DO NOT SCALE DRAWING		REVISION B	
TOLERANCES: LINEAR: +/- 1mm ANGULAR: +/- 1degree						<b>Designed 2 Build</b>  <b>Extended Bracket</b>			
DRAWN	NAME Merlin	DATE 2016=12=05	STOCK:	STOCK SIZE:	TITLE:				
Q.A	NAME Merlin	DATE 2016-12-18			PART NO. p0041-A03		A3		
		MATERIAL: Assembly		WEIGHT: 313.15		SCALE:1:2		SHEET 15 OF 20	

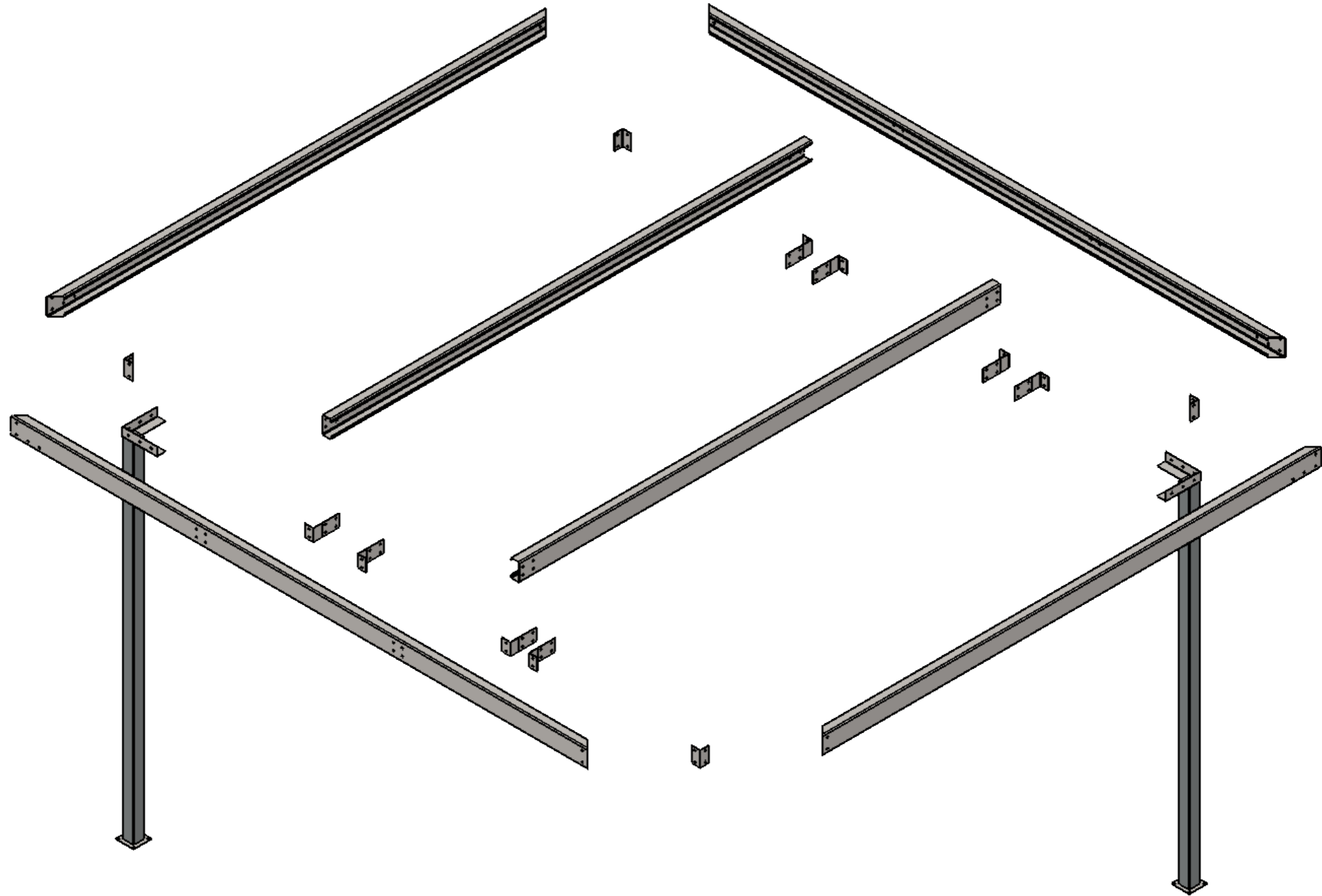


**NOTE:**  
See the exploded view on the next page for parts placement.


QTY.	PART NUMBER	DESCRIPTION	MATERIAL	WEIGHT
2	p0041-006	Purlin Short Mitre		9256.09
2	p0041-007	Purlin Long Mitre		10697.02
2	p0041-008	Purlin Cross Member		9027.52
4	p0041-009	Corner Bracket	Plain Carbon Steel	193.66
2	p0041-A02	Corner Post	Assembly	12386.41
8	p0041-A03	Extended Bracket	Assembly	313.15

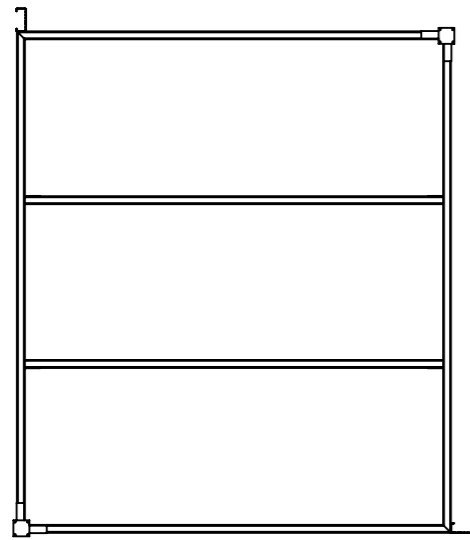
UNLESS OTHERWISE SPECIFIED: DIMENSIONS ARE IN MILLIMETERS		FINISH: As Specified		DEBUR AND BREAK SHARP EDGES		DO NOT SCALE DRAWING		REVISION B	
TOLERANCES: LINEAR: +/- 1mm ANGULAR: +/- 1degree						<b>Designed 2 Build</b>  <b>Frame</b>			
DRAWN Merlin		DATE 2016=12=05		STOCK: STOCK SIZE:					
Q.A Merlin		2016-12-18				PART NO. p0041-A04		A3	
				MATERIAL: Assembly		SCALE:1:50		SHEET 16 OF 20	
				WEIGHT: 86013.93					



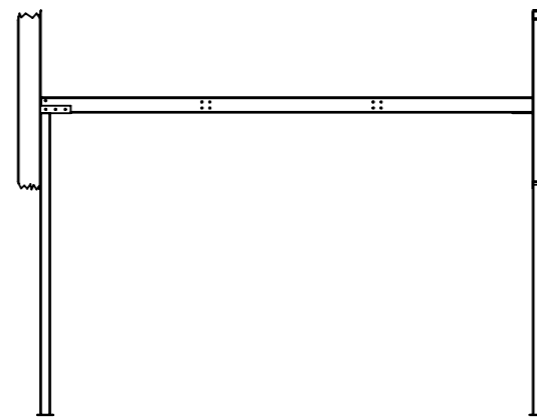
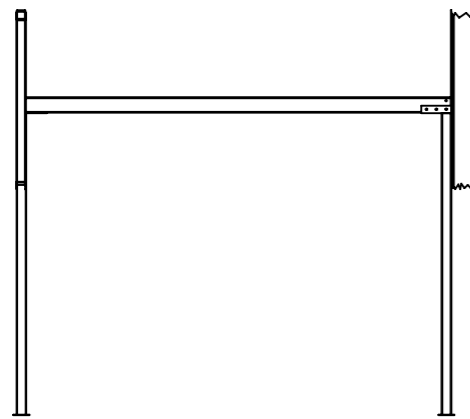
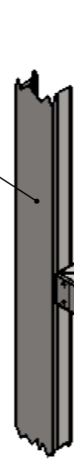


QTY.	PART NUMBER	DESCRIPTION	MATERIAL	WEIGHT
2	p0041-006	Purlin Short Mitre		9256.09
2	p0041-007	Purlin Long Mitre		10697.02
2	p0041-008	Purlin Cross Member		9027.52
4	p0041-009	Corner Bracket	Plain Carbon Steel	193.66
2	p0041-A02	Corner Post	Assembly	12386.41
8	p0041-A03	Extended Bracket	Assembly	313.15

UNLESS OTHERWISE SPECIFIED: DIMENSIONS ARE IN MILLIMETERS		FINISH: As Specified		DEBUR AND BREAK SHARP EDGES		DO NOT SCALE DRAWING		REVISION B	
TOLERANCES: LINEAR: +/- 1mm ANGULAR: +/- 1degree						Designed 2 Build			
DRAWN Merlin		DATE 2016=12=05		STOCK: STOCK SIZE:		Frame			
Q.A Merlin		2016-12-18							
		MATERIAL: Assembly		PART NO. p0041-A04		A3			
		WEIGHT: 86013.93		SCALE:1:5		SHEET 17 OF 20			



Shed upright frame is attached to.

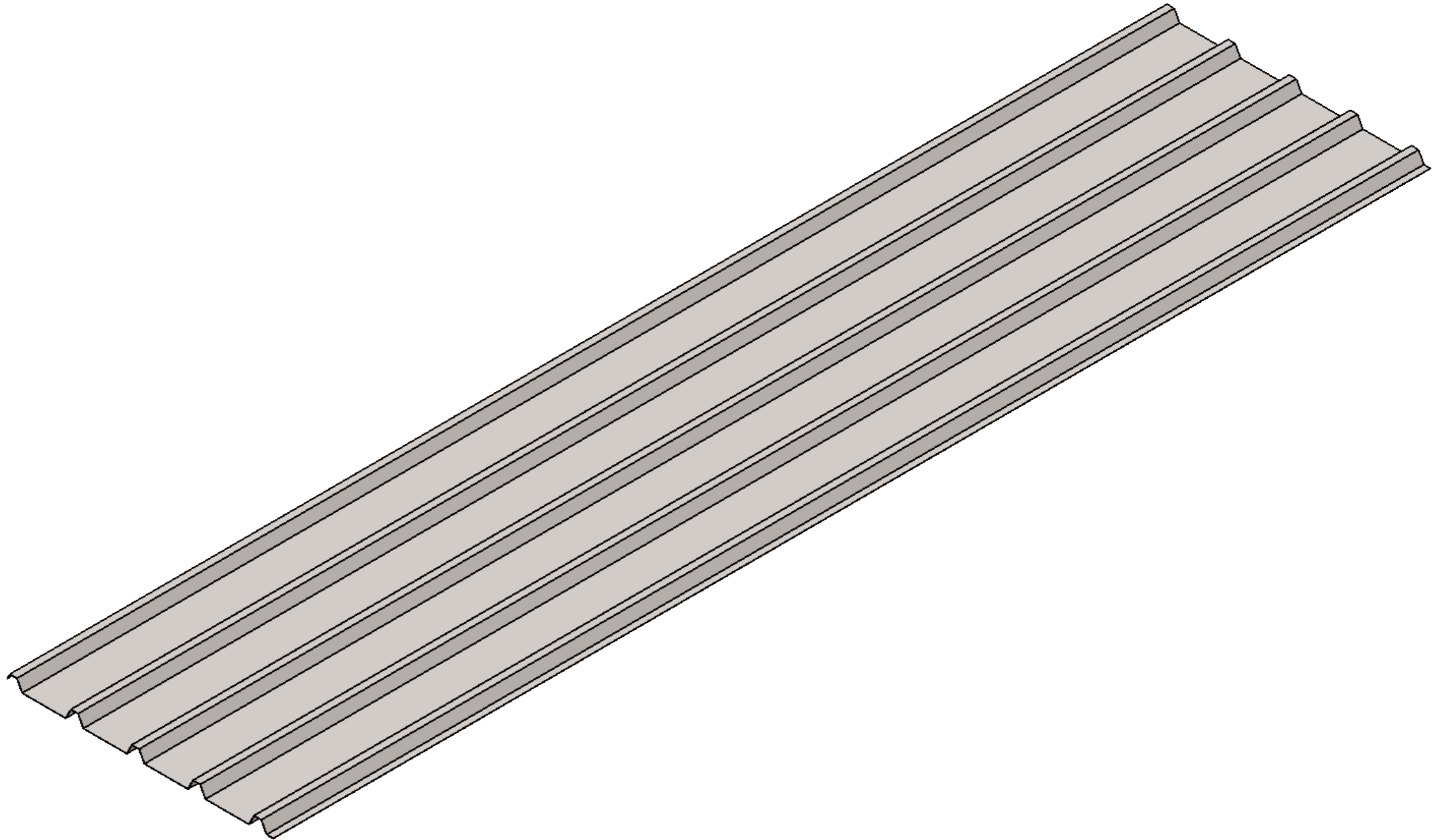
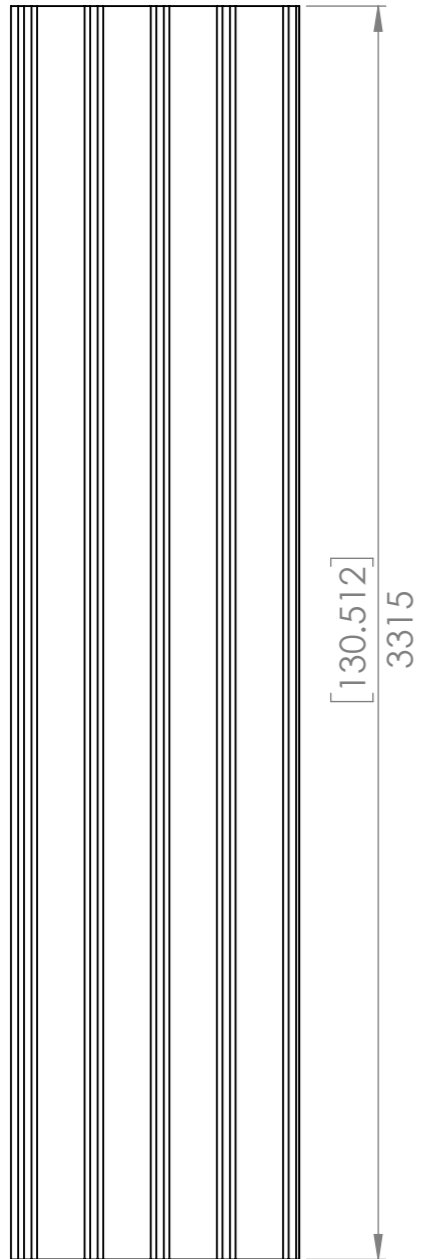
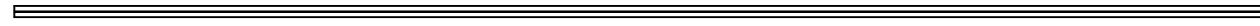


Shed upright frame is attached to.

NOTE:  
Bolt through the corner brackets onto the shed uprights.  
Dynabolt (or equivalent) the posts to the floor.


UNLESS OTHERWISE SPECIFIED: DIMENSIONS ARE IN MILLIMETERS		FINISH: As Specified	DEBUR AND BREAK SHARP EDGES	DO NOT SCALE DRAWING	REVISION B
TOLERANCES: LINEAR: +/- 1mm ANGULAR: +/- 1degree				Designed 2 Build	
DRAWN	NAME Merlin	DATE 2016-12-05	STOCK: STOCK SIZE:		
Q.A	NAME Merlin	DATE 2016-12-17		PART NO. p0041-A05	
MATERIAL: Assembly			WEIGHT: 98574.93		
SCALE:1:50			SHEET 18 OF 20		

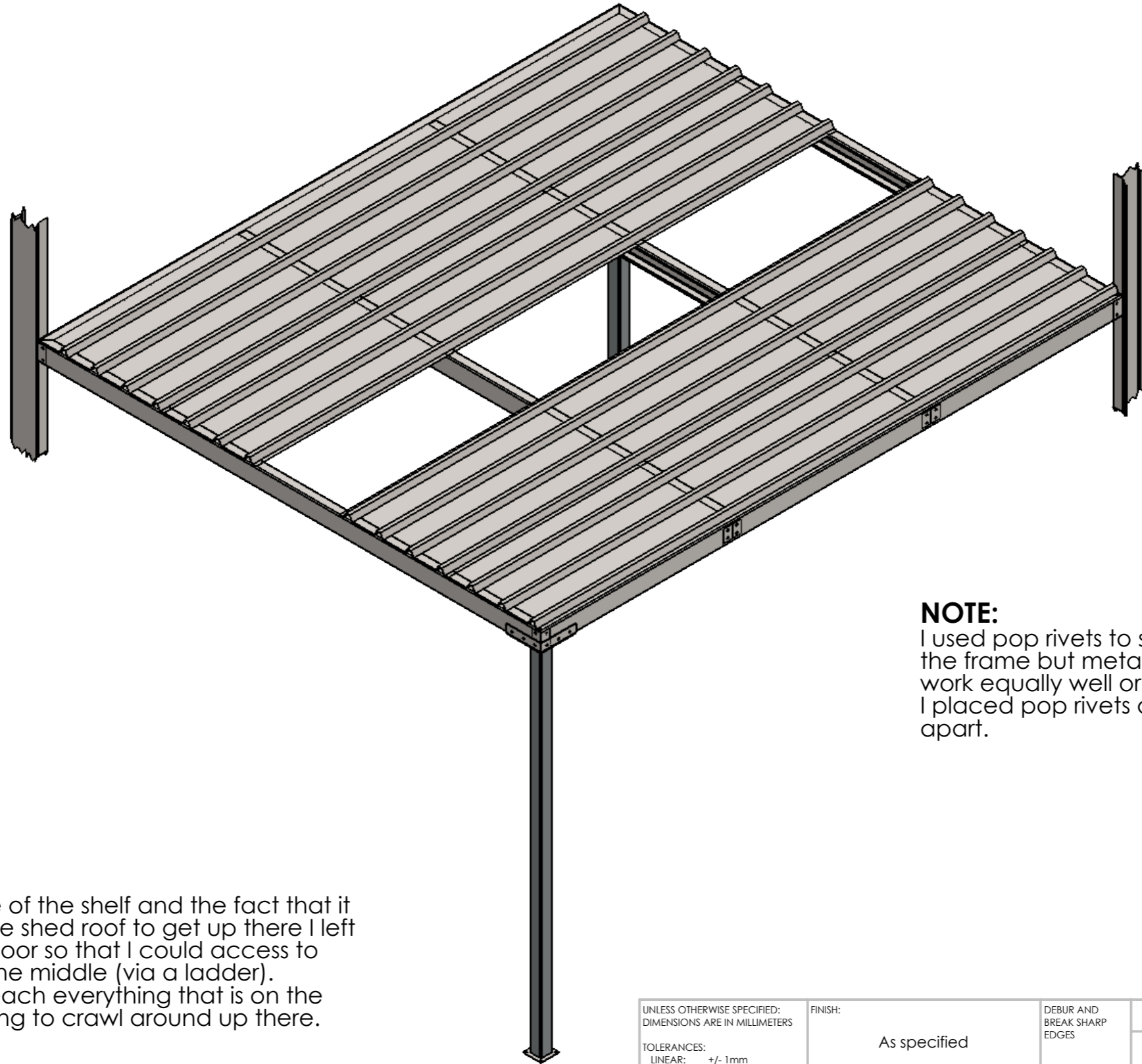




**NOTE:**


I had some cladding left over from the shed construction so I decided to use that for the shelf. Rivet or screw to the frame.  
 Given what I plan to store up there it is a perfect solution, available and free. The corrugations will also add some strength.  
 10mm to 15mm (3/8" to 9/16") plywould also be a suitable substitute although it would be heavier and I doubt it would contribute as much to the ridgidity of the structure.

UNLESS OTHERWISE SPECIFIED: DIMENSIONS ARE IN MILLIMETERS		FINISH:		DEBUR AND BREAK SHARP EDGES		DO NOT SCALE DRAWING		REVISION A	
TOLERANCES: LINEAR: +/- 1mm ANGULAR: +/- 1degree						Designed 2 Build			
								Shelf Sheet	
DRAWN		NAME		DATE		STOCK:		Colourbond or Galvalume	
Q.A		Merlin		2016-12-05		STOCK SIZE:		0.9mm	
		Merlin		2016-12-17					
						MATERIAL:		PART NO.	
						Plain Carbon Steel		p0041-012	
						WEIGHT: 16834.68		SCALE:1:20	
								SHEET 19 OF 20	
								A3	



**NOTE:**  
 Because of the size of the shelf and the fact that it was too close to the shed roof to get up there I left a gap in the shelf floor so that I could access to stored items from the middle (via a ladder). This allows me to reach everything that is on the shelf without having to crawl around up there.

**NOTE:**  
 I used pop rivets to secure the cladding to the frame but metal thread screws would work equally well or better. I placed pop rivets about 100mm (4") apart.

UNLESS OTHERWISE SPECIFIED: DIMENSIONS ARE IN MILLIMETERS		FINISH: As specified		DEBUR AND BREAK SHARP EDGES		DO NOT SCALE DRAWING		REVISION B	
TOLERANCES: LINEAR: +/- 1mm ANGULAR: +/- 1degree						<b>Designed 2 Build</b>  <b>Mezzanine Shelf</b>			
DRAWN	NAME Merlin	DATE 2016-12-05	STOCK:	STOCK SIZE:					
Q.A	NAME Merlin	DATE 2016-12-18					PART NO. p0041		A3
				MATERIAL: Assembly		SCALE:1:20		SHEET 20 OF 20	
				WEIGHT: 161591.36					