

Since the area to be covered will usually be different these plans should be regarded as a general guide only.

Welding is dangerous. So are heavy and unstable pot walls. Build this entirely at your own risk.

As always, view the video of the build in conjunction with the plans.

DISCLAIMER:

I have built these racks and have used them without a problem.

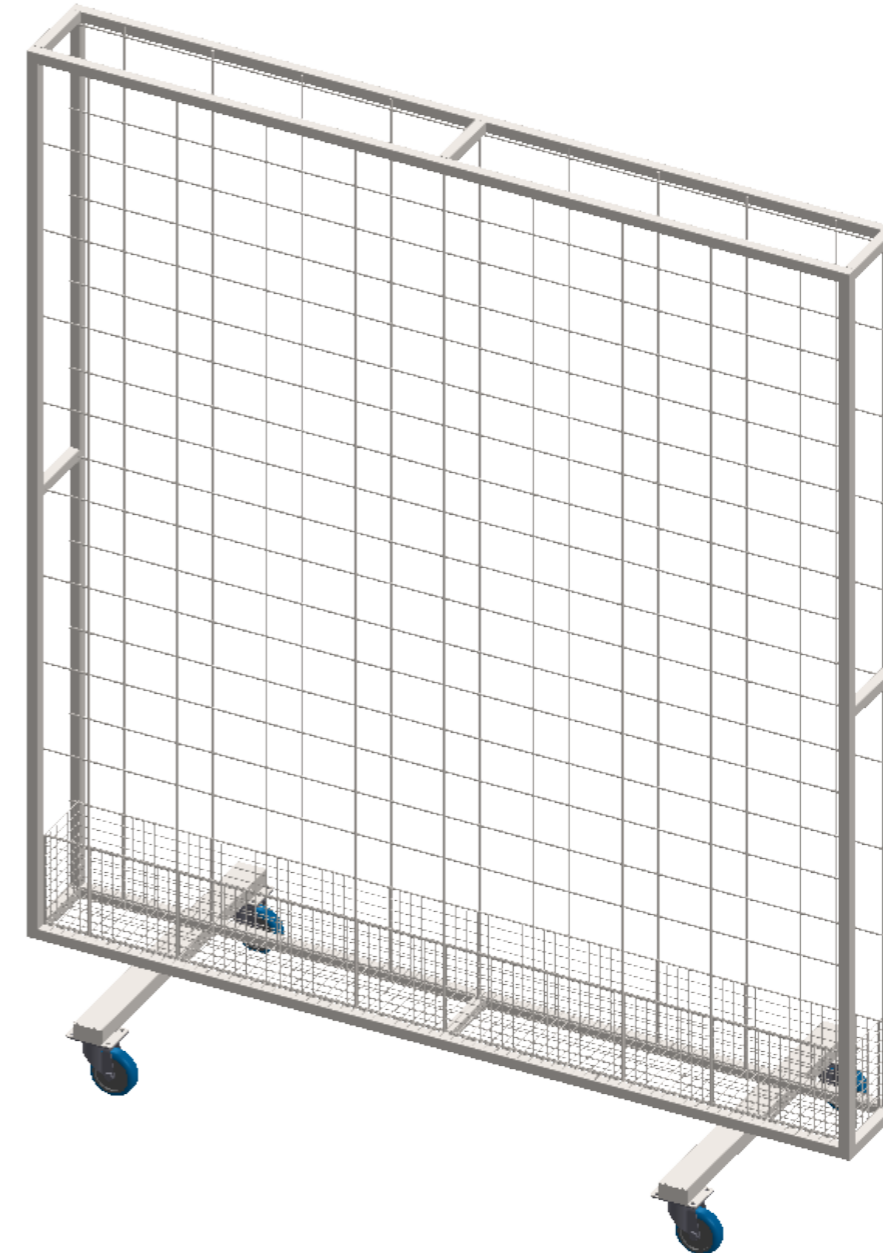
Be warned that I am not an engineer and there has been very little in the way of strength analysis done on this. It is all eyeball engineering.

I provide the plans as an example of something that has worked for me. They are provided for educational purposes only. I want to stress in the strongest possible terms that if you choose to build something from these plans then you do so entirely at your own risk.


Where the plans feature a "QA Date" this only means that I have actually built the item in the plans and completed the build on that date. It does **NOT** mean that the design passed any form of quality assurance.

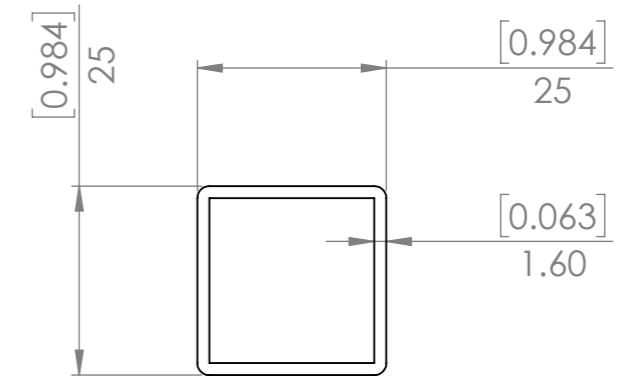
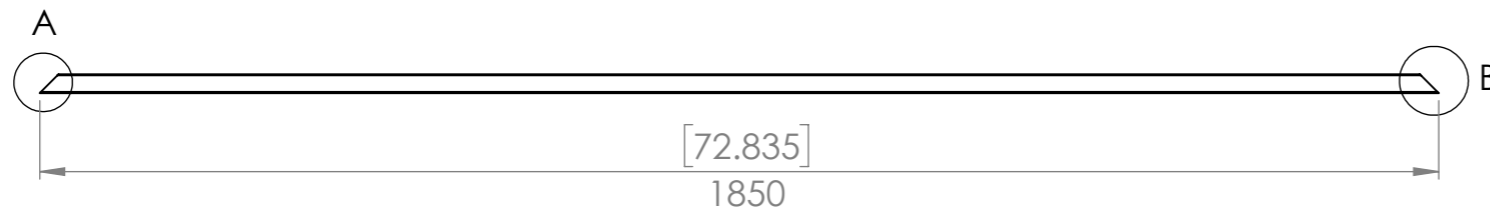
I have no control of the quality of construction nor the modifications you may make to the design. I take no responsibility for anything you choose to do with these plans.

If you do not fully understand everything above or if you do not fully agree with it then DO NOT USE THESE PLANS.

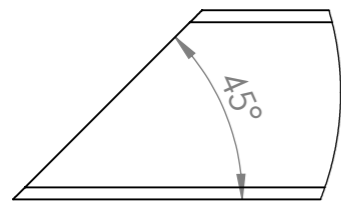


QTY.	PART NUMBER	DESCRIPTION	MATERIAL	WEIGHT
4	p0072-001	Horizontal Frame	Plain Carbon Steel	2100.97
4	p0072-002	Vertical Frame	Plain Carbon Steel	2331.21
8	p0072-003	Frame Spacer	Plain Carbon Steel	180.74
2	p0072-004	Leg	Plain Carbon Steel	3067.59
4	p0072-005	Leg Cap	Plain Carbon Steel	50.87
4	p0072-006	Castor Mount Plate	Plain Carbon Steel	189.39
2	p0072-007	Large Mesh	Plain Carbon Steel	5380.33
2	p0072-008	Bottom Side Mesh	Plain Carbon Steel	998.14
2	p0072-009	Small Mesh End	Plain Carbon Steel	91.16
1	p0072-010	Small Mesh	Plain Carbon Steel	861.60
4	p0072-011	Castor 100mm		

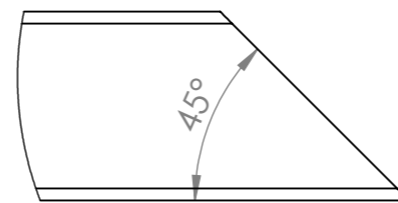
UNLESS OTHERWISE SPECIFIED: DIMENSIONS ARE IN MILLIMETERS		FINISH: Paint		DEBUR AND BREAK SHARP EDGES		DO NOT SCALE DRAWING		REVISION A	
TOLERANCES: LINEAR: +/- 1mm ANGULAR: +/- 1degree						<p style="text-align: center; font-size: 1.2em;">Designed 2 Build</p> <p style="text-align: center; font-size: 1.5em;">Plant Wall Complete</p>			
DRAWN Merlin		DATE 2017-02-28		TITLE:					
Q.A Merlin		DATE 2017-04-17		MATERIAL: Assembly		WEIGHT: 41171.76		SCALE: 1:15	
						SHEET 1 OF 20			



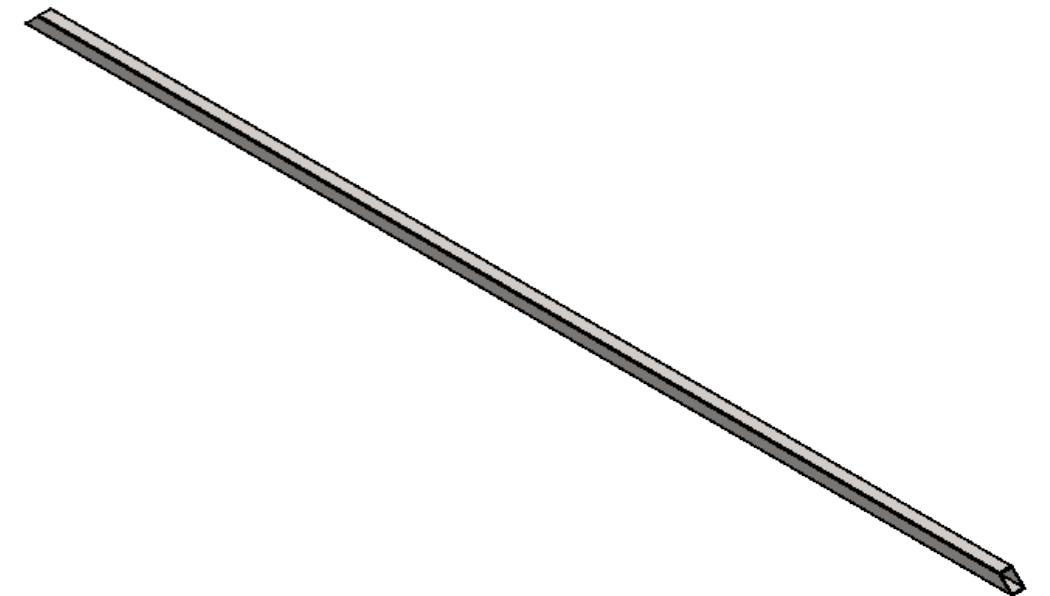
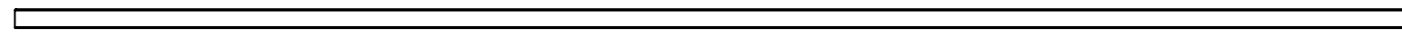
VIEW
SCALE 1 : 1




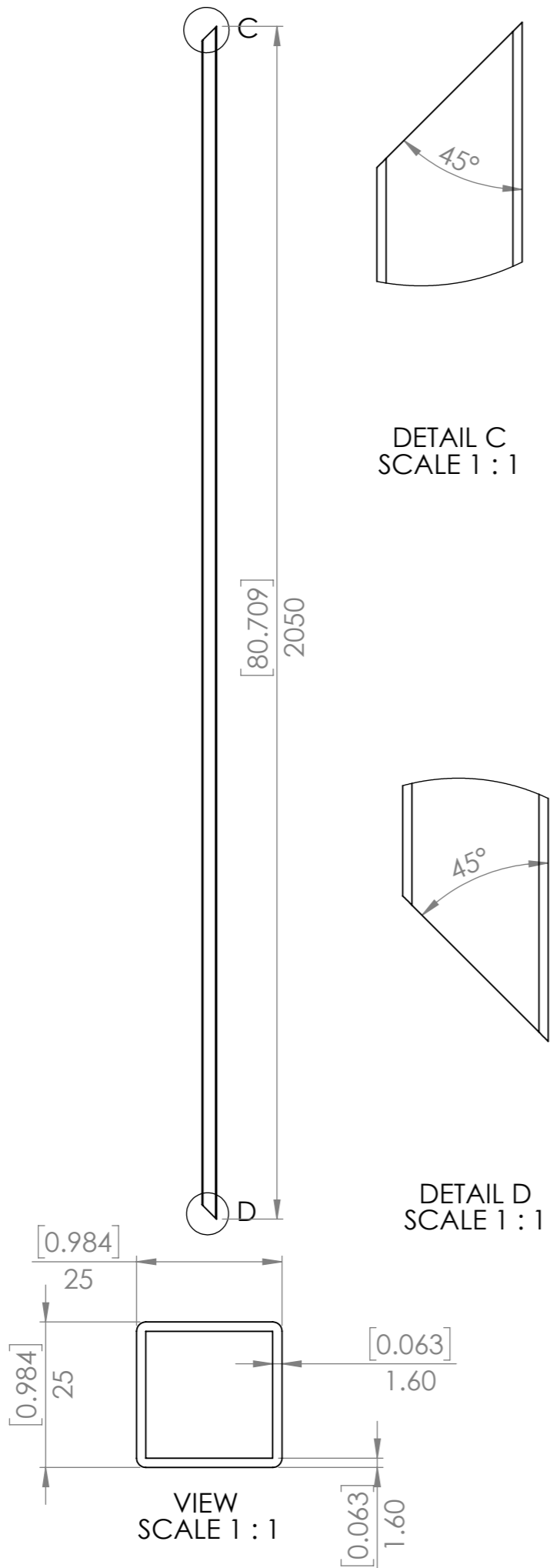
DETAIL A
SCALE 1 : 1



DETAIL B
SCALE 1 : 1



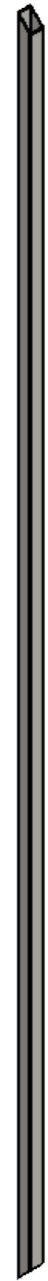
UNLESS OTHERWISE SPECIFIED: DIMENSIONS ARE IN MILLIMETERS		FINISH:		DEBUR AND BREAK SHARP EDGES		DO NOT SCALE DRAWING		REVISION A	
TOLERANCES: LINEAR: +/- 1mm ANGULAR: +/- 1degree						<p style="text-align: center;">Designed 2 Build</p> <p style="text-align: center;">Horizontal Frame</p>			
	NAME	DATE		STOCK:	SHS				
DRAWN	Merlin	2017-02-26		STOCK SIZE:	25 x 25 x 1.6	<p style="text-align: center;">PART NO. p0072-001</p> <p style="text-align: right;">A3</p>			
Q.A	Merlin	2017-04-17							
				MATERIAL:		SCALE:1:10		SHEET 2 OF 20	
				Plain Carbon Steel					
				WEIGHT: 2100.97					




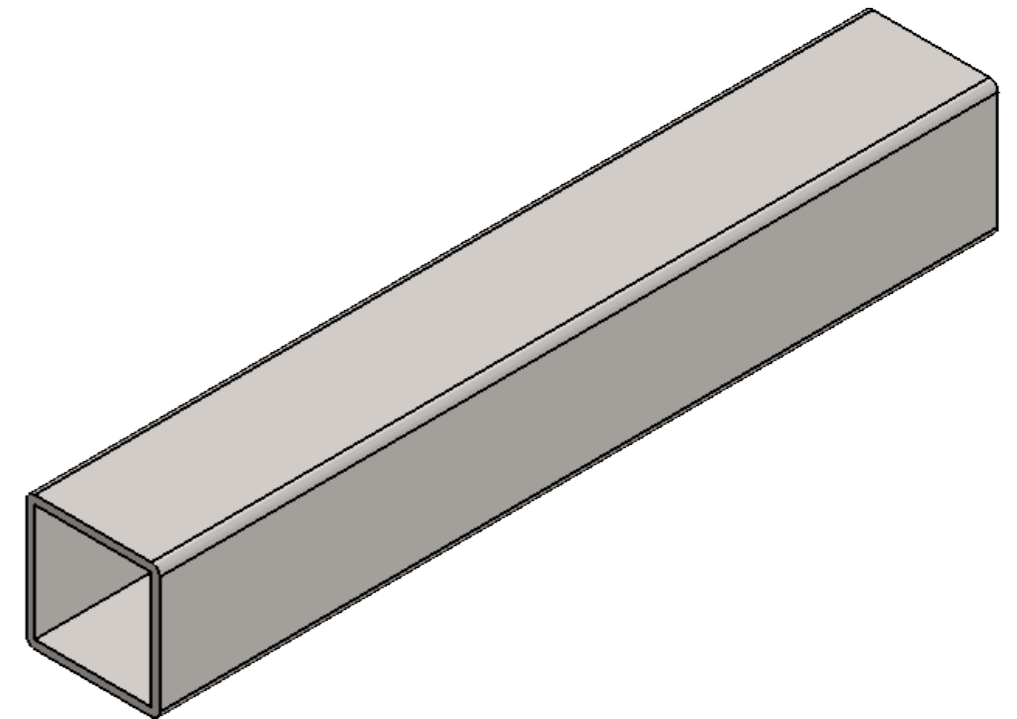
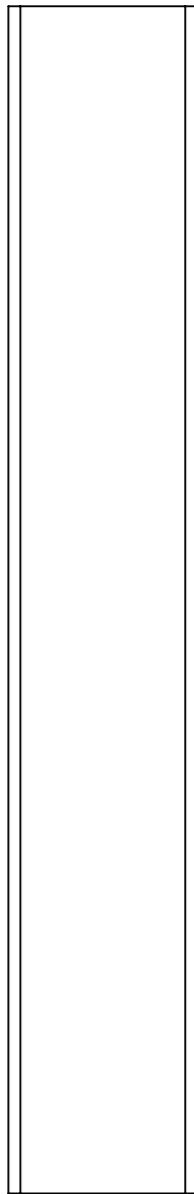
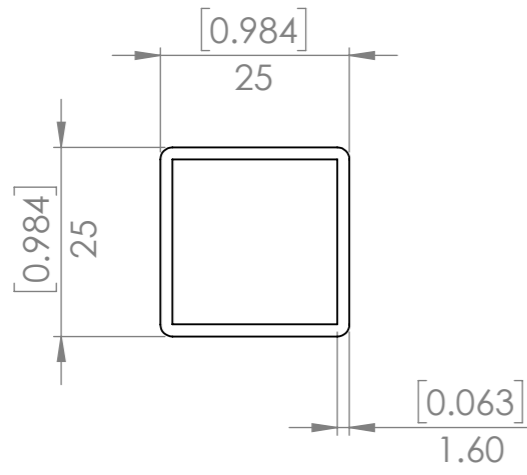
DETAIL C
SCALE 1 : 1


DETAIL D
SCALE 1 : 1

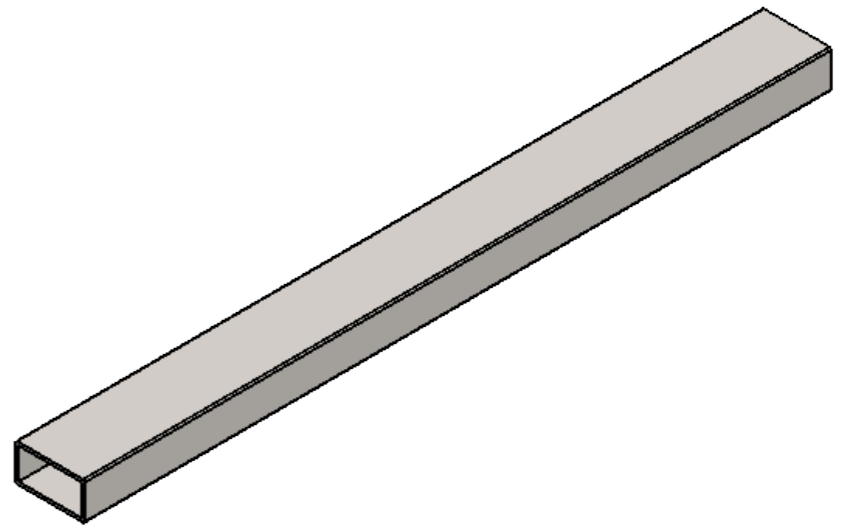
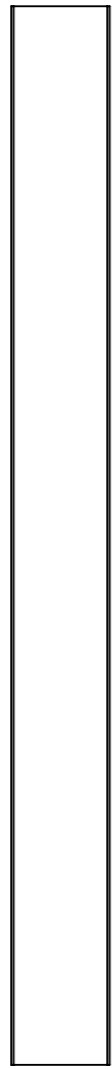
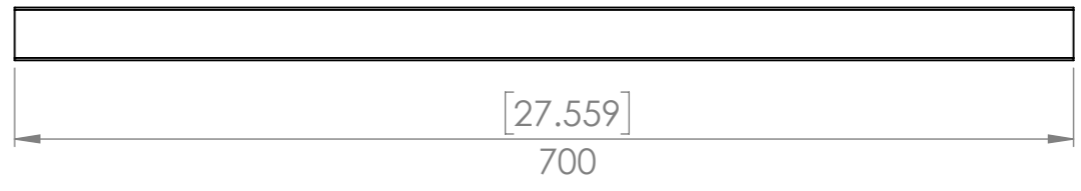
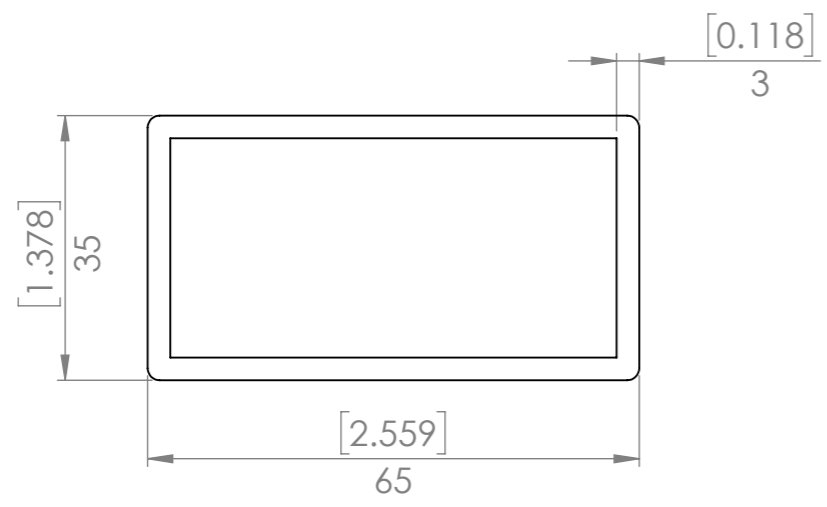
VIEW
SCALE 1 : 1




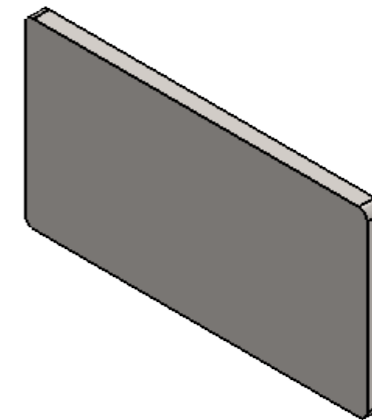
UNLESS OTHERWISE SPECIFIED: DIMENSIONS ARE IN MILLIMETERS		FINISH:		DEBUR AND BREAK SHARP EDGES		DO NOT SCALE DRAWING		REVISION A	
TOLERANCES: LINEAR: +/- 1mm ANGULAR: +/- 1degree						Designed 2 Build			
DRAWN Merlin		DATE 2017-02-26		STOCK:		SHS		TITLE:	
Q.A Merlin		DATE 2017-04-17		STOCK SIZE:		25 x 25 x 1.6		Vertical Frame	
									
		MATERIAL: Plain Carbon Steel		PART NO. p0072-002		A3			
WEIGHT: 2331.21		SCALE:1:10		SHEET 3 OF 20					




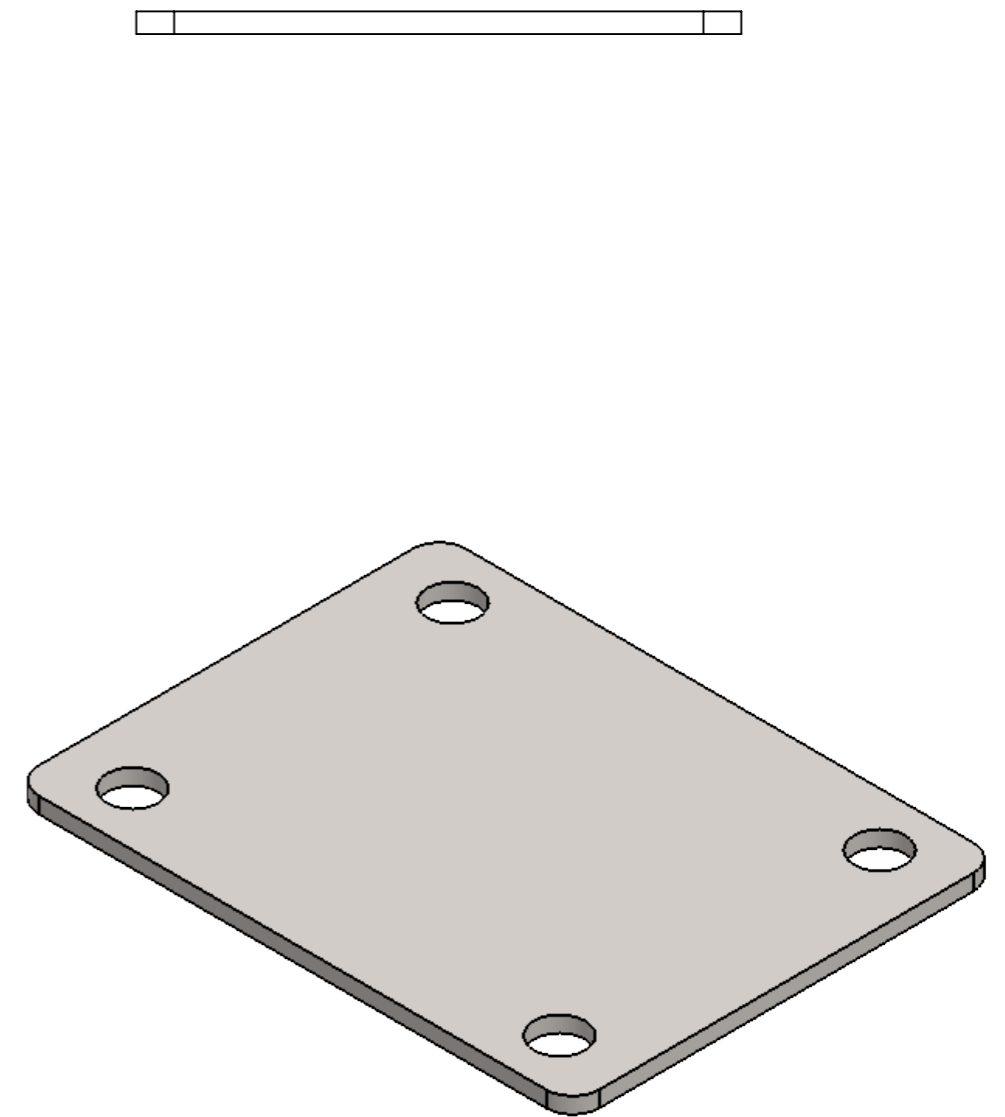
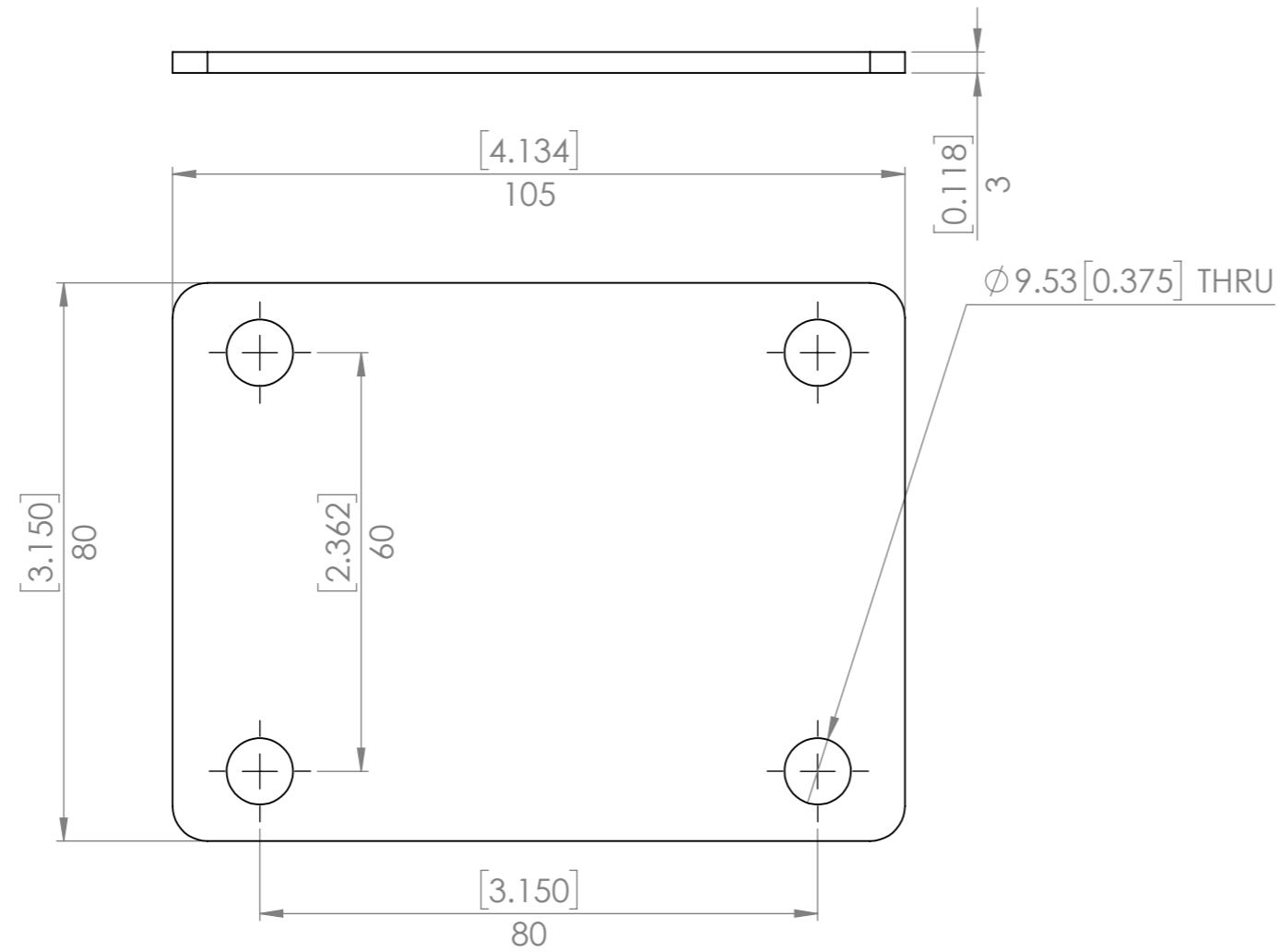
UNLESS OTHERWISE SPECIFIED: DIMENSIONS ARE IN MILLIMETERS		FINISH:		DEBUR AND BREAK SHARP EDGES		DO NOT SCALE DRAWING		REVISION A	
TOLERANCES: LINEAR: +/- 1mm ANGULAR: +/- 1degree						TITLE: Designed 2 Build Frame Spacer			
DRAWN	NAME Merlin	DATE 2017-02-26	STOCK:	SHS					
Q.A	NAME Merlin	DATE 2017-04-17	STOCK SIZE:	25 x 25 x 1.6					
		MATERIAL: Plain Carbon Steel		PART NO. p0072-003		A3			
		WEIGHT: 180.74		SCALE: 1:1		SHEET 4 OF 20			



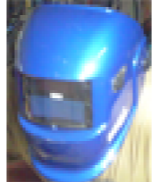
UNLESS OTHERWISE SPECIFIED: DIMENSIONS ARE IN MILLIMETERS		FINISH:		DEBUR AND BREAK SHARP EDGES		DO NOT SCALE DRAWING		REVISION B	
TOLERANCES: LINEAR: +/- 1mm ANGULAR: +/- 1degree						Designed 2 Build Leg			
NAME	DATE	STOCK:	RHS	TITLE:					
DRAWN Merlin	2017-02-26	STOCK SIZE:	65 x 35 x 3						
Q.A Merlin	2017-04-17								
		MATERIAL:		PART NO.		p0072-004		A3	
		Plain Carbon Steel							
		WEIGHT: 3067.59		SCALE: 1:5		SHEET 5 OF 20			

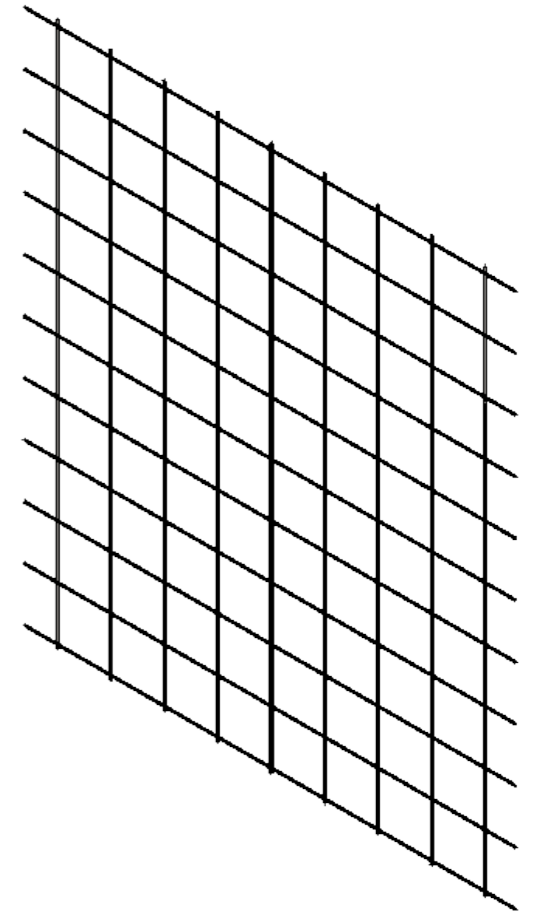
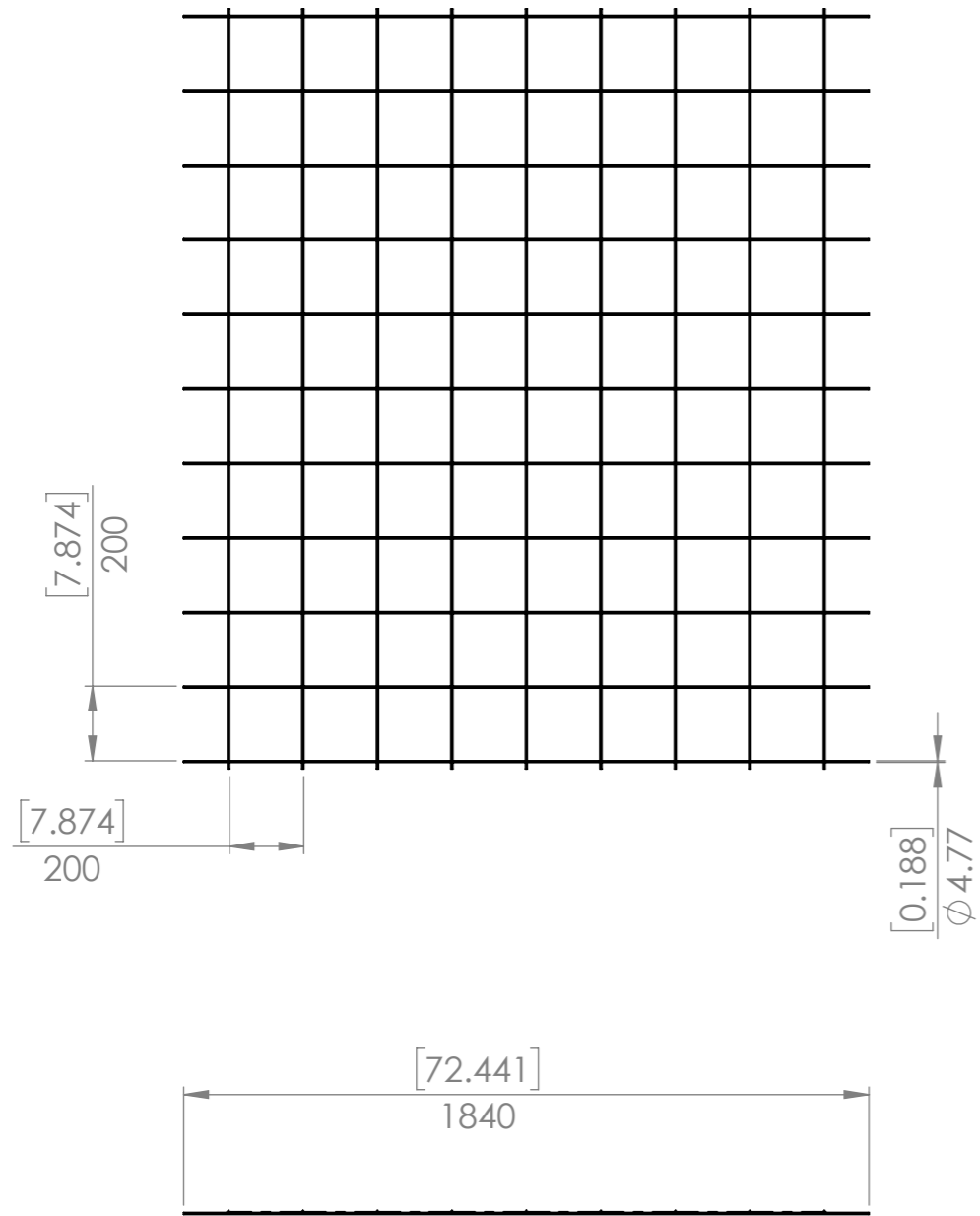


UNLESS OTHERWISE SPECIFIED: DIMENSIONS ARE IN MILLIMETERS		FINISH:		DEBUR AND BREAK SHARP EDGES		DO NOT SCALE DRAWING		REVISION B	
TOLERANCES: LINEAR: +/- 1mm ANGULAR: +/- 1degree						Designed 2 Build			
	NAME	DATE		STOCK:	Flat	TITLE: Leg Cap			
DRAWN	Merlin	2017-02-26		STOCK SIZE:	64 x 34 x 3				
Q.A	Merlin	2017-04-17				PART NO. p0072-005		A3	
				MATERIAL: Plain Carbon Steel		SCALE:1:1		SHEET 6 OF 20	
				WEIGHT: 50.87					



Naturally, adjust these dimensions to suit the castors that you are going to use.

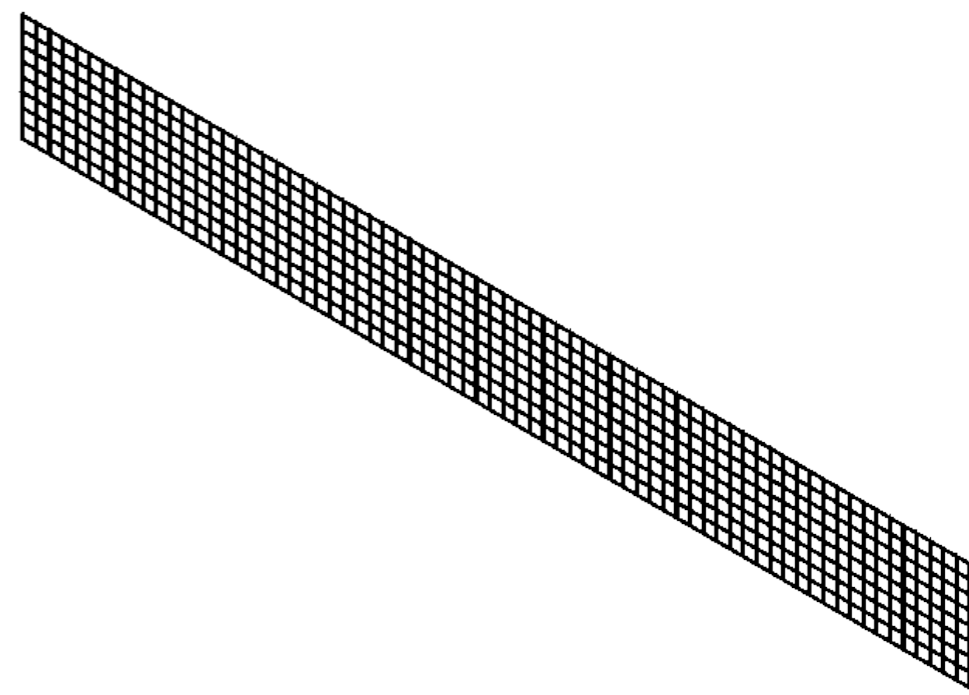
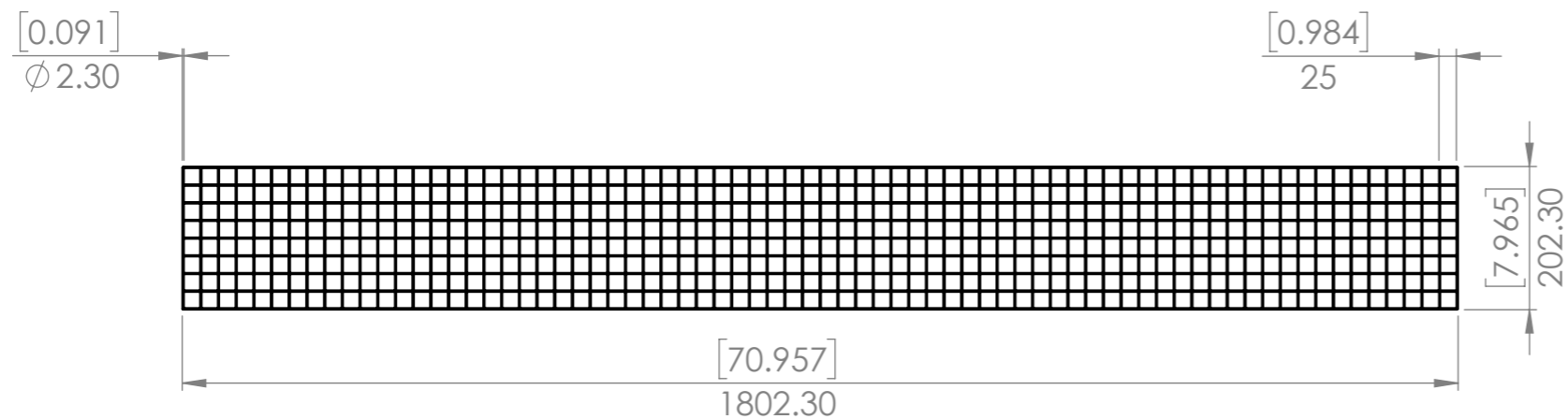
UNLESS OTHERWISE SPECIFIED: DIMENSIONS ARE IN MILLIMETERS		FINISH:		DEBUR AND BREAK SHARP EDGES		DO NOT SCALE DRAWING		REVISION B	
TOLERANCES: LINEAR: +/- 1mm ANGULAR: +/- 1degree						Designed 2 Build			
DRAWN Merlin 2017-02-25		DATE 2017-02-25		STOCK: Flat		Castor Mount Plate			
Q.A Merlin 2017-04-17		DATE 2017-04-17		STOCK SIZE: 105mm x 5mm					
				MATERIAL: Plain Carbon Steel		PART NO. p0072-006		A3	
				WEIGHT: 189.39		SCALE: 1:1		SHEET 7 OF 20	




OneSteel reference number
smooth round wire

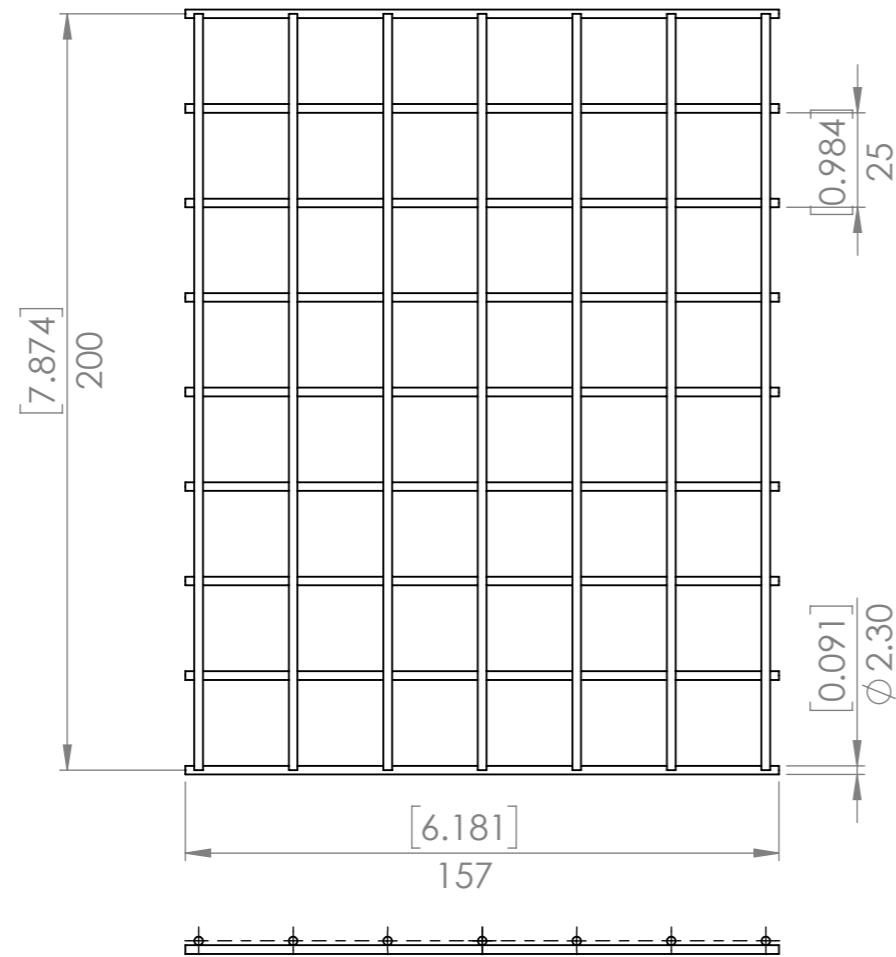
UNLESS OTHERWISE SPECIFIED: DIMENSIONS ARE IN MILLIMETERS		FINISH:		DEBUR AND BREAK SHARP EDGES		DO NOT SCALE DRAWING		REVISION B	
TOLERANCES: LINEAR: +/- 1mm ANGULAR: +/- 1degree						Designed 2 Build			
				MATERIAL: Plain Carbon Steel		PART NO. p0072-007		A3	
				WEIGHT: 5380.33		SCALE: 1:20		SHEET 8 OF 20	



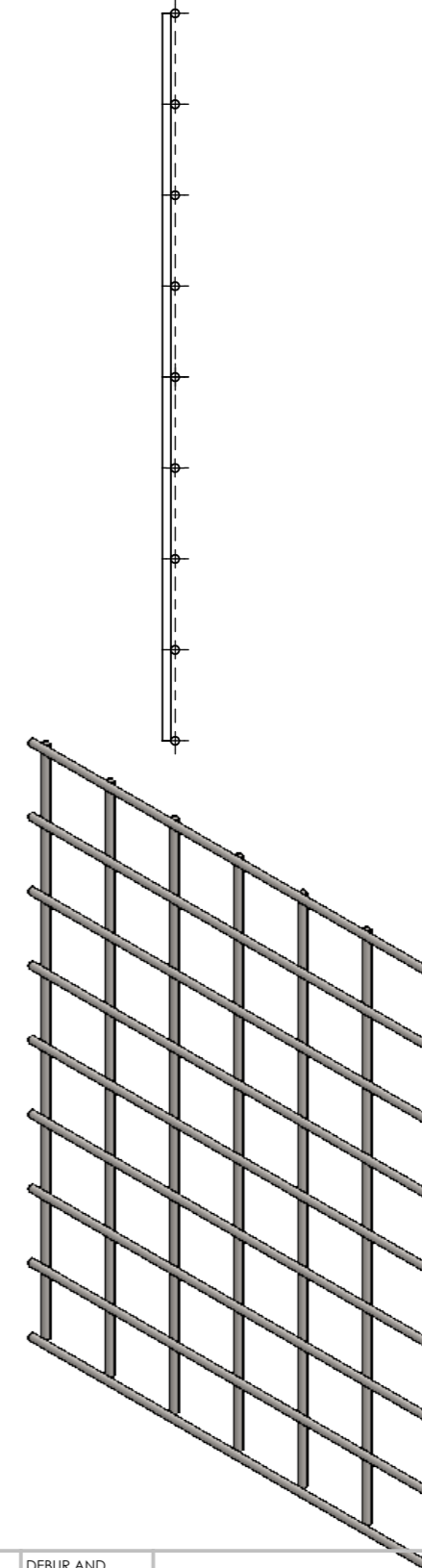



Onesteel reference number G112AHS
Any small mesh or expanded metal will
do for holding in the balast stones.

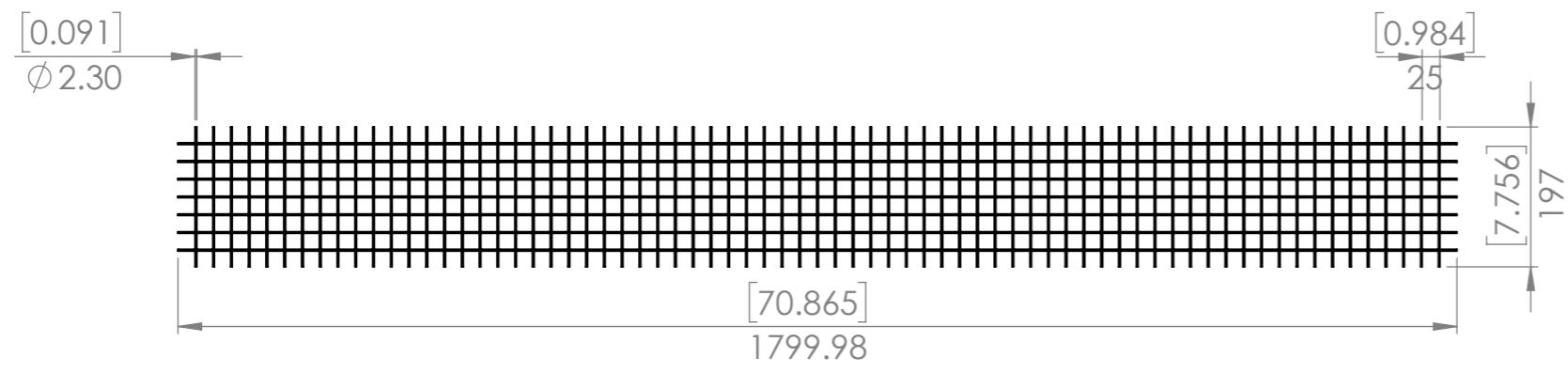
UNLESS OTHERWISE SPECIFIED: DIMENSIONS ARE IN MILLIMETERS		FINISH:		DEBUR AND BREAK SHARP EDGES		DO NOT SCALE DRAWING		REVISION B	
TOLERANCES: LINEAR: +/- 1mm ANGULAR: +/- 1degree						Designed 2 Build Bottom Side Mesh			
	NAME	DATE		STOCK:	Mesh				
DRAWN	Merlin	2017-02-26		STOCK SIZE:	25 x 25 x 2.3				
Q.A	Merlin	2017-04-17							
				MATERIAL:		PART NO.		A3	
				Plain Carbon Steel		p0072-008			
				WEIGHT: 998.14		SCALE: 1:10		SHEET 9 OF 20	



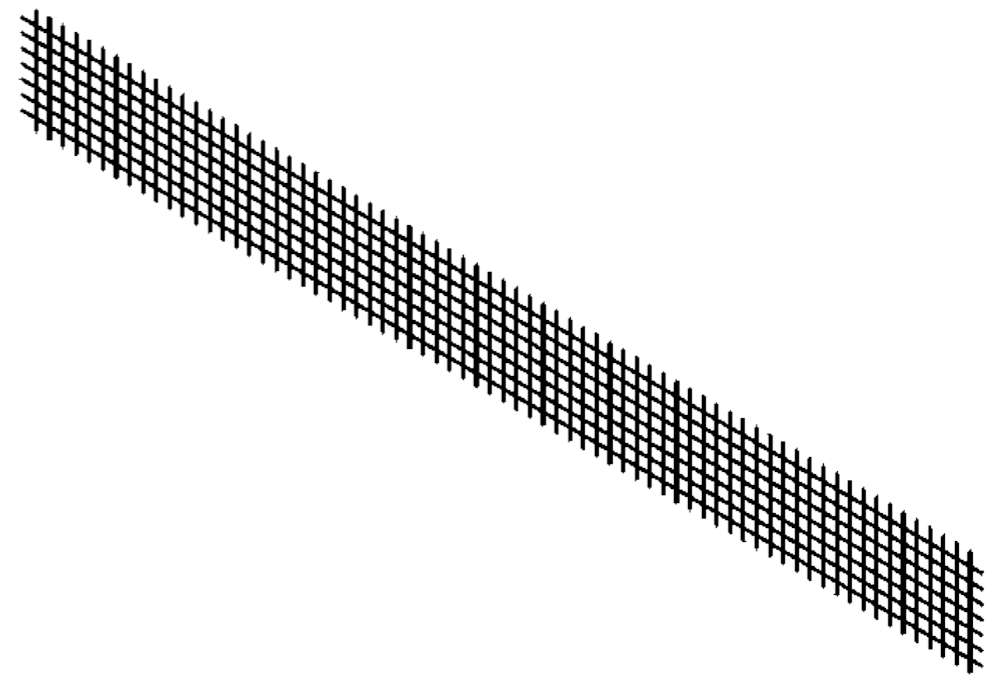
Onesteel reference number G112AHS
 Any small mesh or expanded metal will
 do for holding in the balast stones.




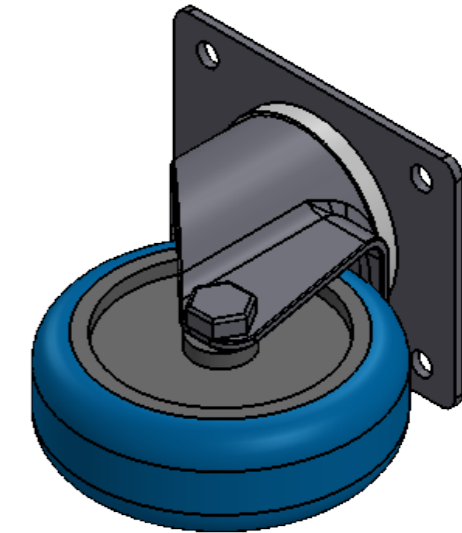
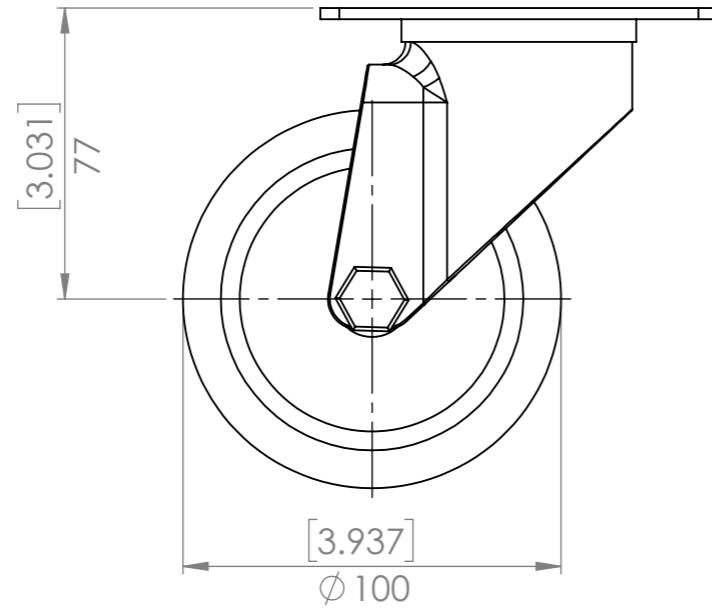
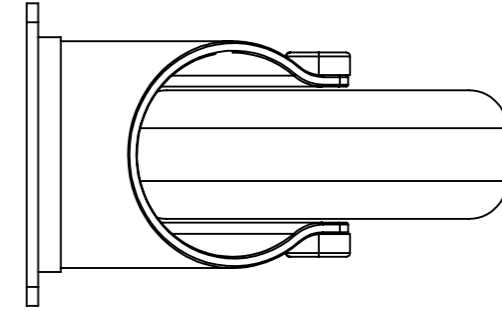
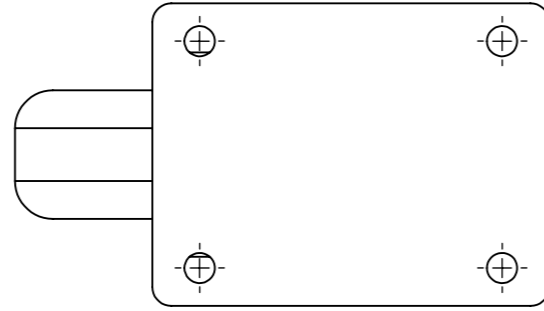
UNLESS OTHERWISE SPECIFIED: DIMENSIONS ARE IN MILLIMETERS		FINISH:		DEBUR AND BREAK SHARP EDGES		DO NOT SCALE DRAWING		REVISION B	
TOLERANCES: LINEAR: +/- 1mm ANGULAR: +/- 1degree						TITLE: Designed 2 Build Small Mesh End			
DRAWN	NAME Merlin	DATE 2017-02-26	STOCK:	Mesh					
Q.A	NAME Merlin	DATE 2017-04-17	STOCK SIZE:	25 x 25 x 2,3					
		MATERIAL: Plain Carbon Steel		PART NO. p0072-009		A3			
		WEIGHT: 91.16		SCALE: 1:2		SHEET 10 OF 20			




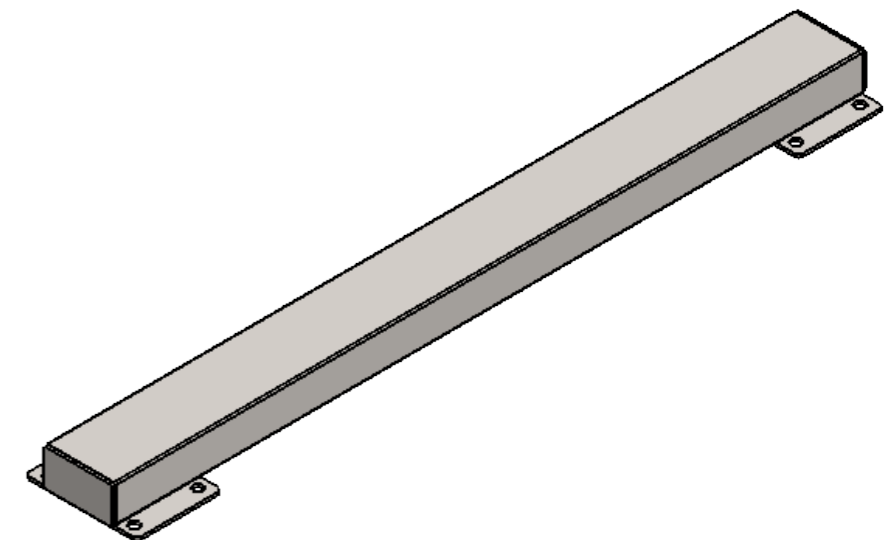
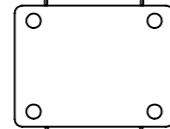
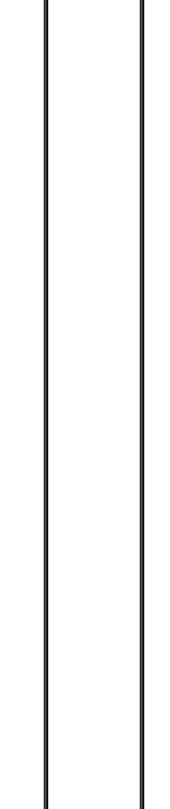
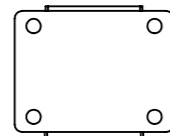
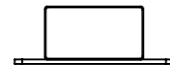
Onesteel reference number G112AHS
 Any small mesh or expanded metal will
 do for holding in the balast stones.



UNLESS OTHERWISE SPECIFIED: DIMENSIONS ARE IN MILLIMETERS		FINISH:		DEBUR AND BREAK SHARP EDGES		DO NOT SCALE DRAWING		REVISION B	
TOLERANCES: LINEAR: +/- 1mm ANGULAR: +/- 1degree						<h2>Designed 2 Build</h2> <h3>Small Mesh</h3>			
	NAME	DATE		STOCK:	Mesh				
DRAWN	Merlin	2017-02-26		STOCK SIZE:	25 x 25 x 2.3				
Q.A	Merlin	2017-04-17							
				MATERIAL:		PART NO.		A3	
				Plain Carbon Steel		p0072-010			
				WEIGHT: 861.60		SCALE: 1:10		SHEET 11 OF 20	



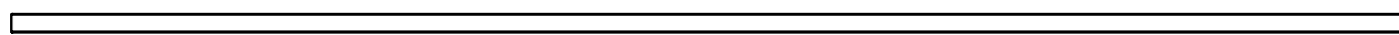
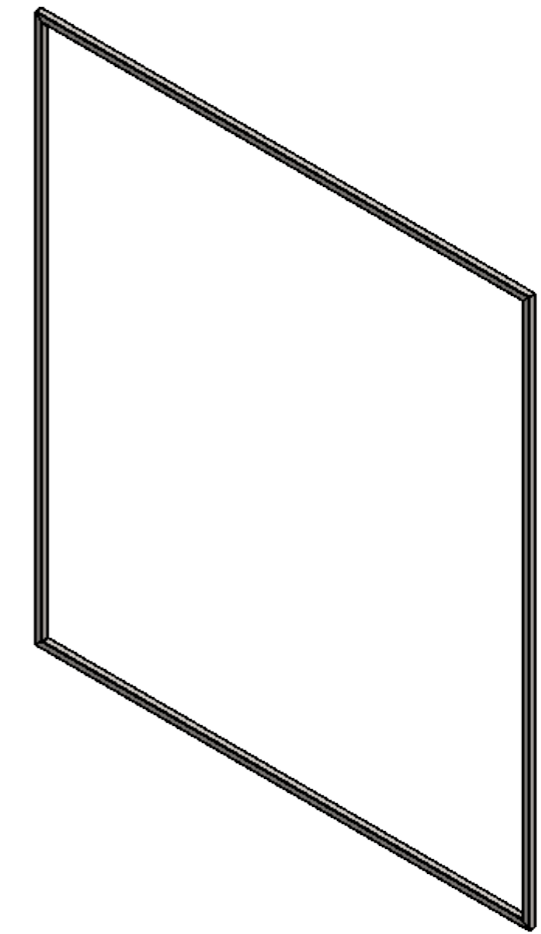
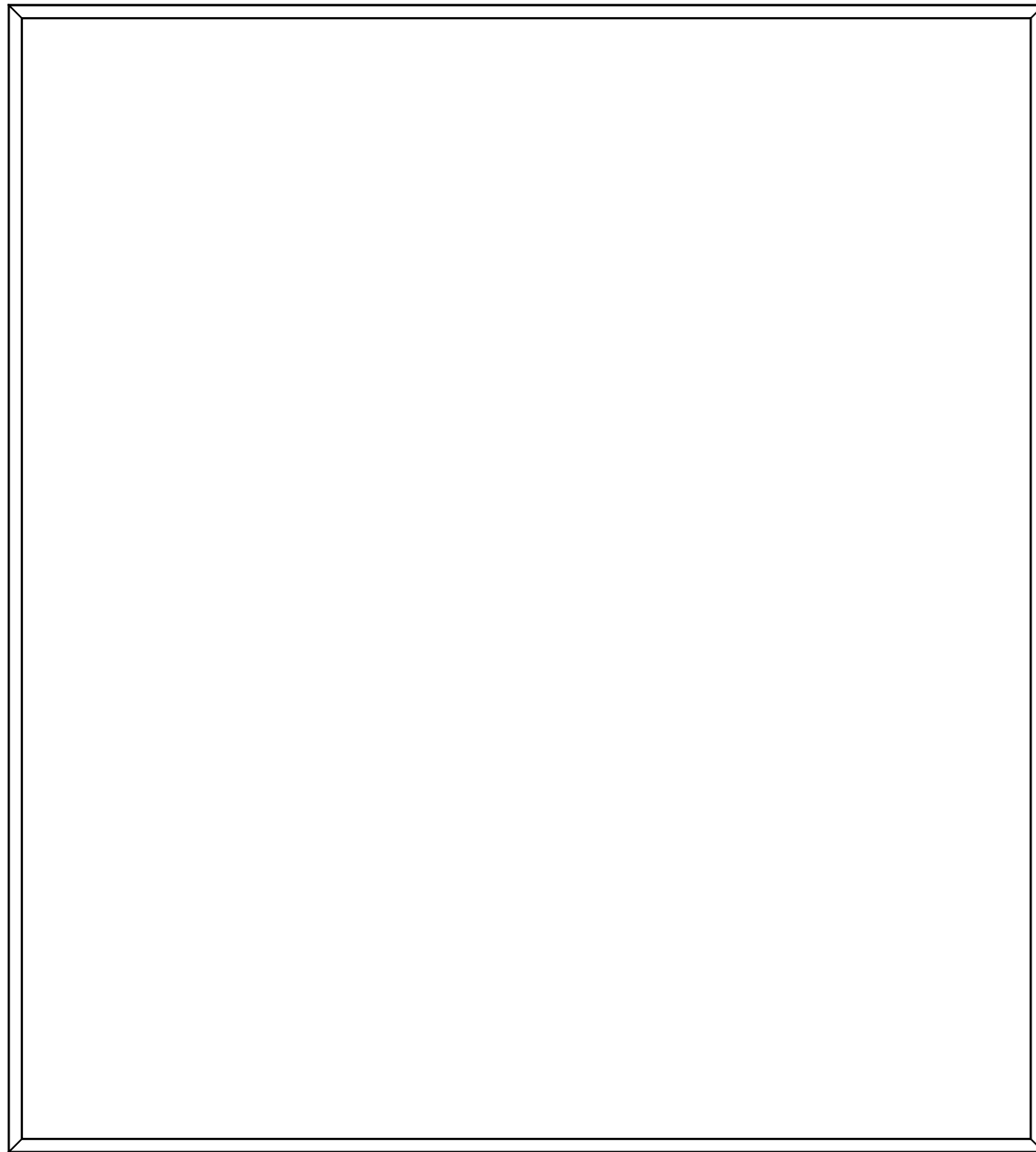
UNLESS OTHERWISE SPECIFIED: DIMENSIONS ARE IN MILLIMETERS		FINISH:		DEBUR AND BREAK SHARP EDGES		DO NOT SCALE DRAWING		REVISION B	
TOLERANCES: LINEAR: +/- 1mm ANGULAR: +/- 1degree						TITLE: Designed 2 Build Castor 100mm			
DRAWN	NAME Merlin	DATE		STOCK:				PART NO. p0072-011	
Q.A	Merlin			STOCK SIZE:		SCALE:1:2		SHEET 12 OF 20	
				MATERIAL:					
				WEIGHT:					



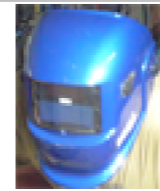
UNLESS OTHERWISE SPECIFIED: DIMENSIONS ARE IN MILLIMETERS		FINISH: Bare		DEBUR AND BREAK SHARP EDGES		DO NOT SCALE DRAWING		REVISION A	
TOLERANCES: LINEAR: +/- 1mm ANGULAR: +/- 1degree						Designed 2 Build			
DRAWN Merlin		DATE 2017-02-27		STOCK: STOCK SIZE:		Leg			
Q.A Merlin		2017-04-17							
				MATERIAL: Assembly		PART NO. p0072-A01		A3	
				WEIGHT: 3548.10		SCALE:1:5		SHEET 13 OF 20	



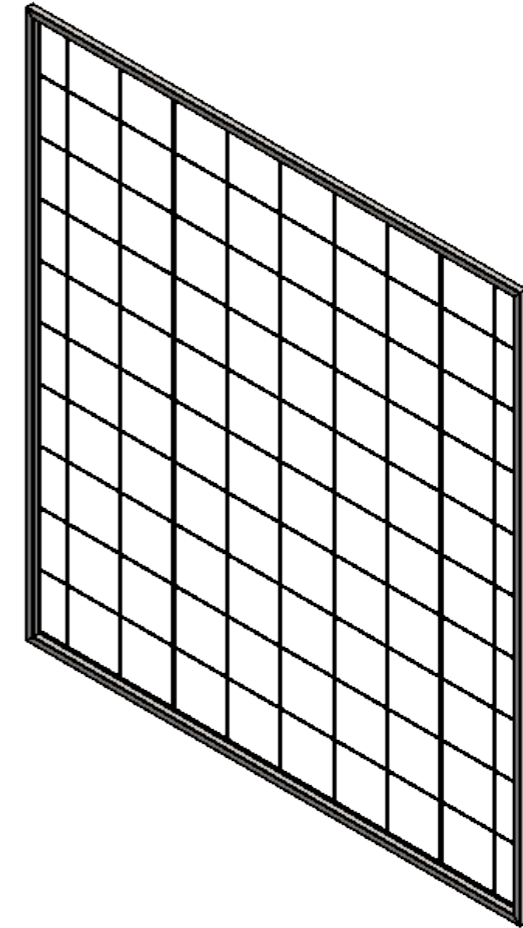
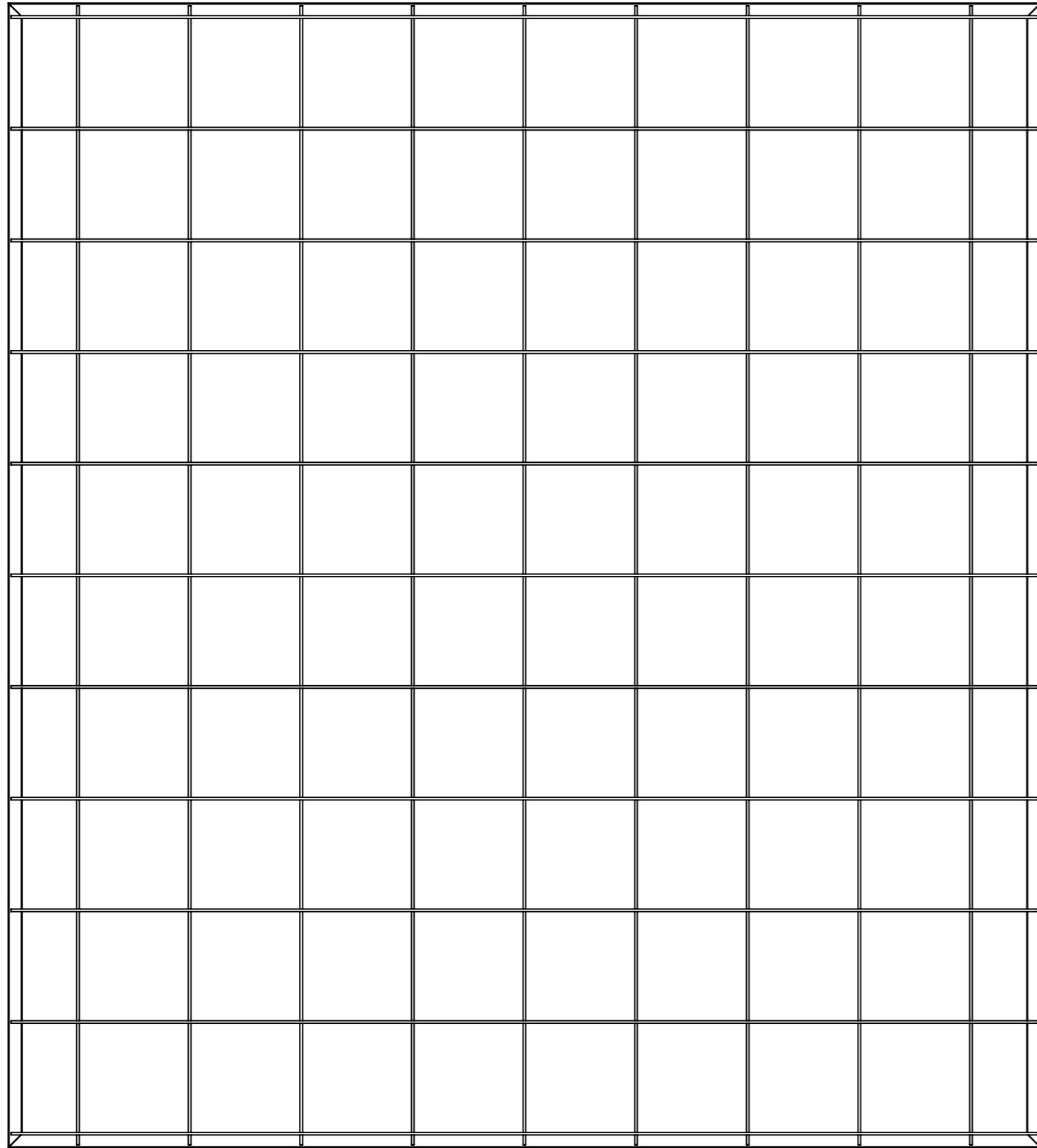
QTY.	PART NUMBER	DESCRIPTION	MATERIAL	WEIGHT
1	p0072-004	Leg	Plain Carbon Steel	3067.59
2	p0072-005	Leg Cap	Plain Carbon Steel	50.87
2	p0072-006	Castor Mount Plate	Plain Carbon Steel	189.39



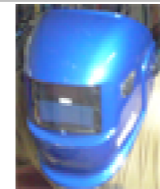
UNLESS OTHERWISE SPECIFIED: DIMENSIONS ARE IN MILLIMETERS		FINISH: Paint	DEBUR AND BREAK SHARP EDGES	DO NOT SCALE DRAWING	REVISION A
TOLERANCES: LINEAR: +/- 1mm ANGULAR: +/- 1degree				Designed 2 Build	
	NAME	DATE	STOCK:	Frame	
DRAWN	Merlin	2017-02-26	STOCK SIZE:		
Q.A	Merlin	2017-04-17			
	MATERIAL: Assembly			PART NO. p0072-A02	A3
	WEIGHT: 8864.35			SCALE:1:10	SHEET 14 OF 20



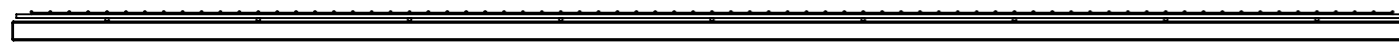
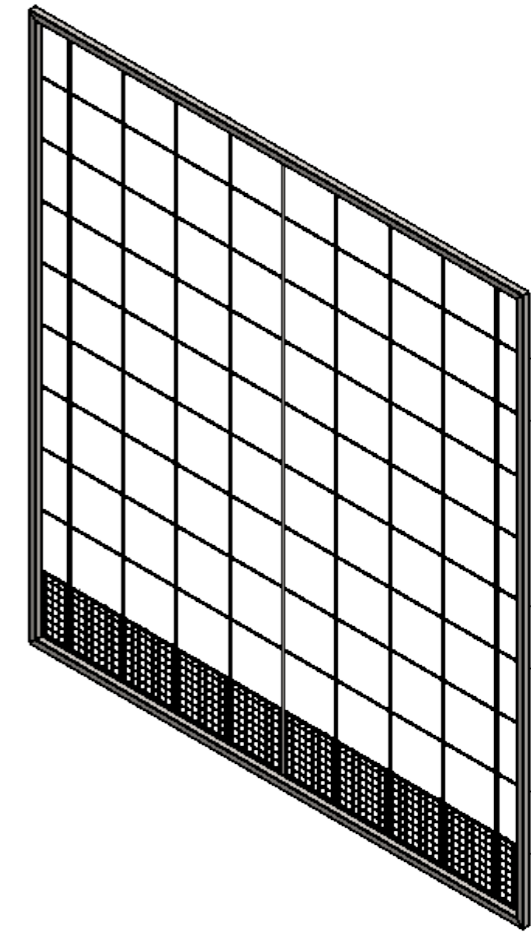
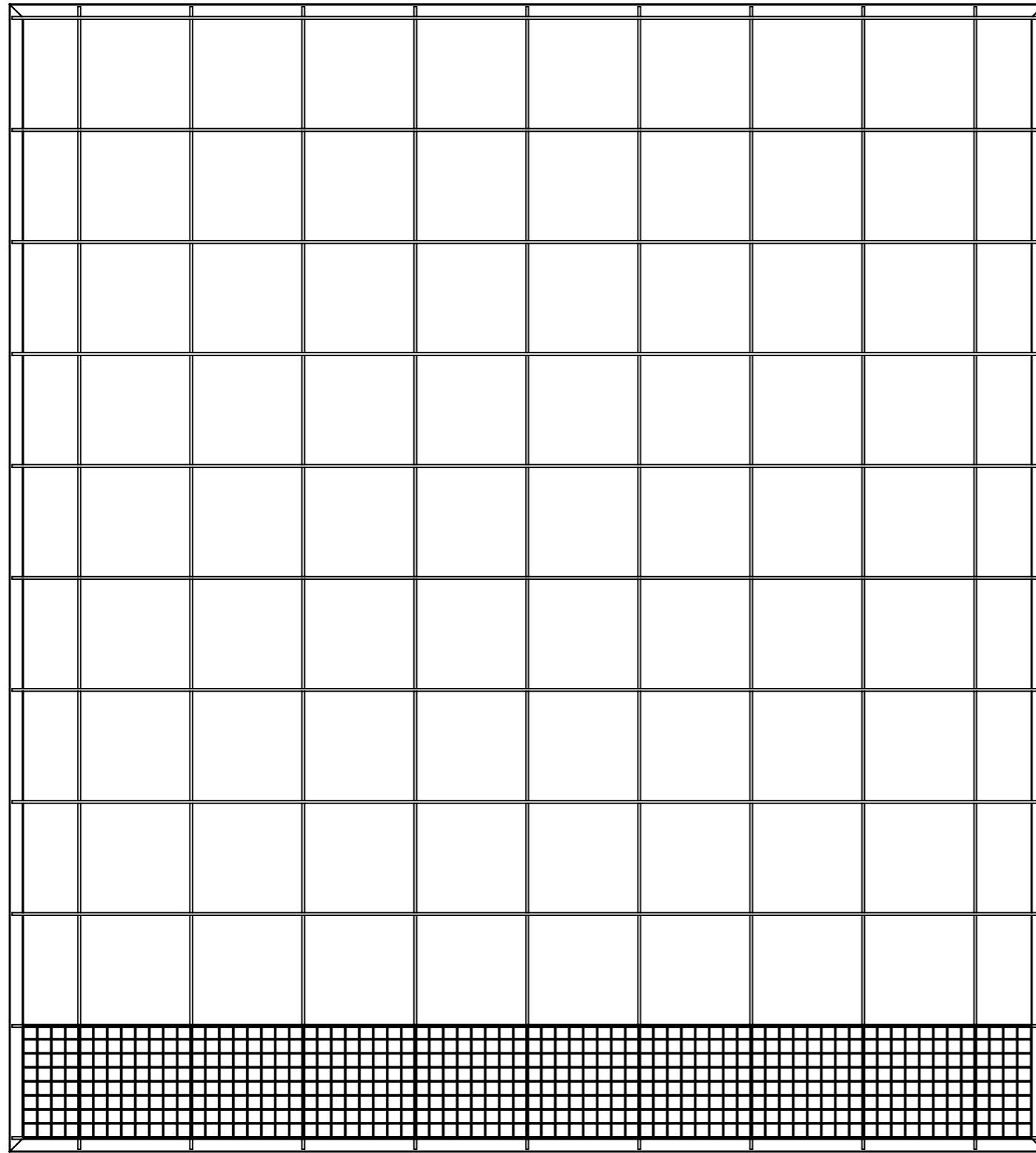
QTY.	PART NUMBER	DESCRIPTION	MATERIAL	WEIGHT
2	p0072-001	Horizontal Frame	Plain Carbon Steel	2100.97
2	p0072-002	Vertical Frame	Plain Carbon Steel	2331.21



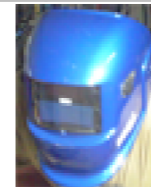
UNLESS OTHERWISE SPECIFIED: DIMENSIONS ARE IN MILLIMETERS		FINISH: Bare	DEBUR AND BREAK SHARP EDGES	DO NOT SCALE DRAWING	REVISION A
TOLERANCES: LINEAR: +/- 1mm ANGULAR: +/- 1degree				Designed 2 Build Frame Stage 2	
DRAWN	NAME Merlin	DATE 2017-02-27	STOCK: STOCK SIZE:		
Q.A	NAME Merlin	DATE 2017-04-17		PART NO. p0072-A03	
		MATERIAL: Assembly		A3	
		WEIGHT: 14244.68		SCALE:1:10	
				SHEET 15 OF 20	



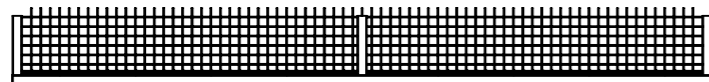
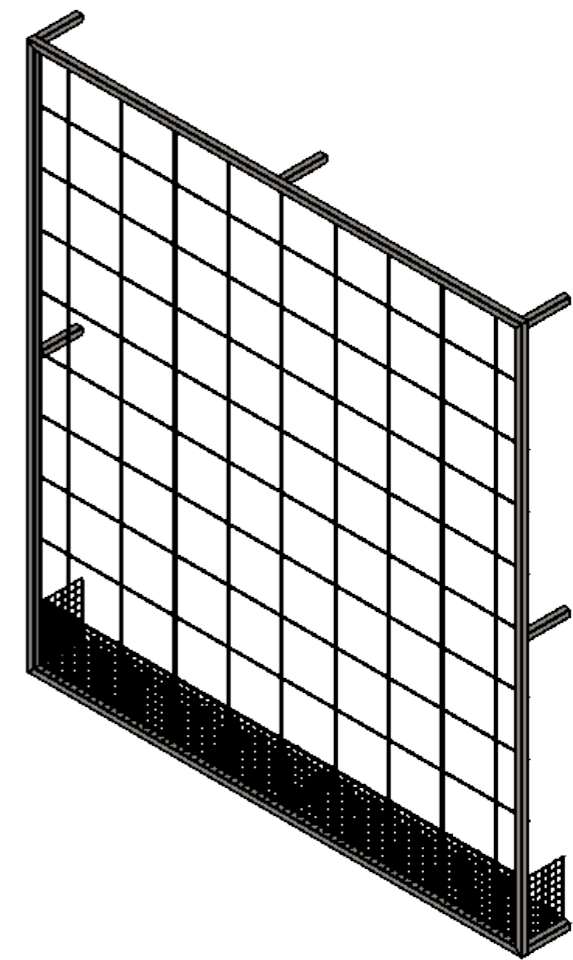
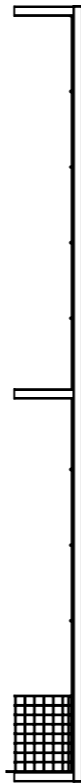
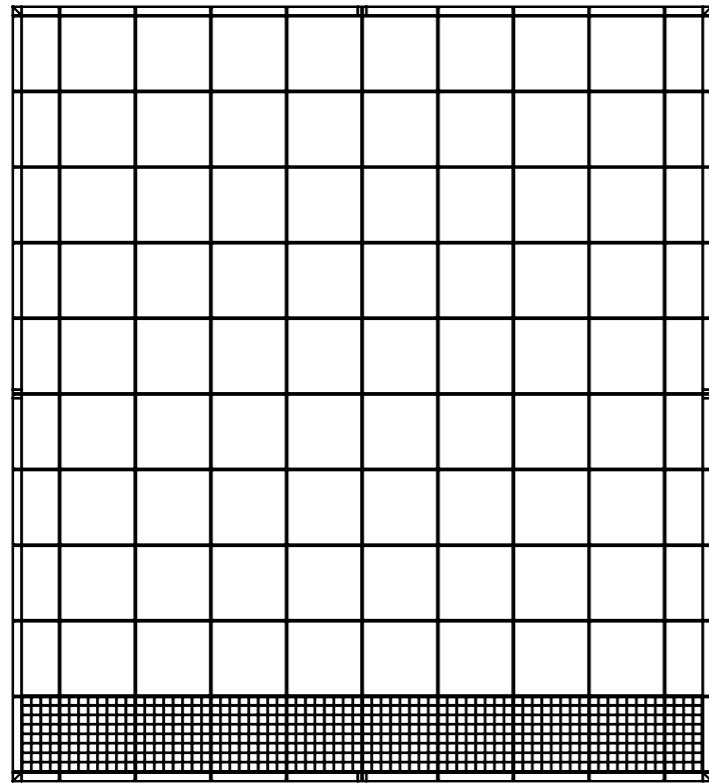
QTY.	PART NUMBER	DESCRIPTION	MATERIAL	WEIGHT
1	p0072-007	Large Mesh	Plain Carbon Steel	5380.33
1	p0072-A02	Frame	Assembly	8864.35




UNLESS OTHERWISE SPECIFIED: DIMENSIONS ARE IN MILLIMETERS		FINISH: Bare	DEBUR AND BREAK SHARP EDGES	DO NOT SCALE DRAWING	REVISION A
TOLERANCES: LINEAR: +/- 1mm ANGULAR: +/- 1degree				Designed 2 Build Frame Stage 3	
DRAWN	NAME Merlin	DATE 2017-02-27	STOCK: STOCK SIZE:		
Q.A	NAME Merlin	DATE 2017-04-17			
		MATERIAL: Assembly		PART NO. p0072-A04	A3
		WEIGHT: 15242.82		SCALE:1:10	SHEET 16 OF 20

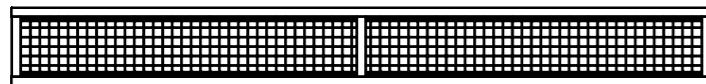
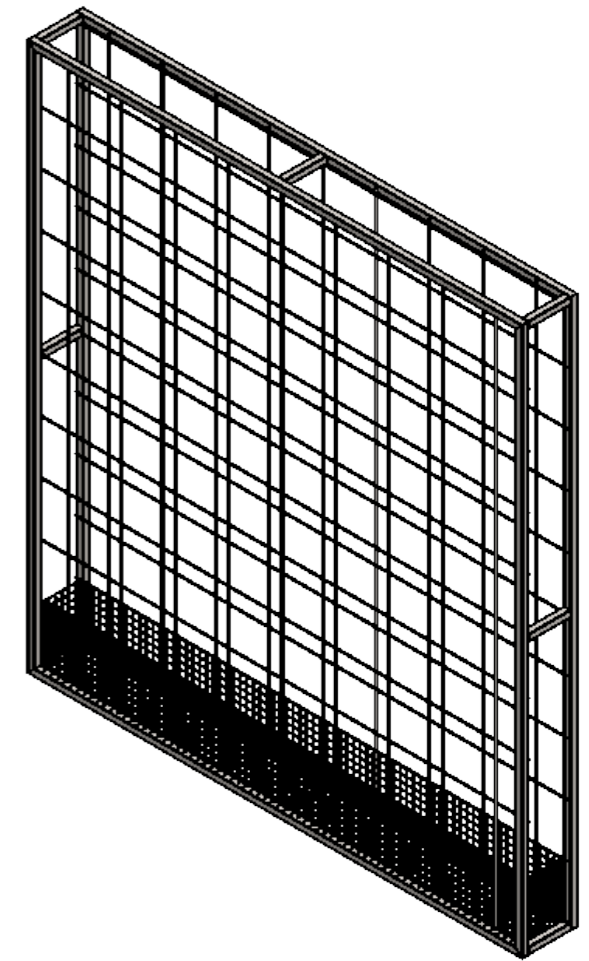
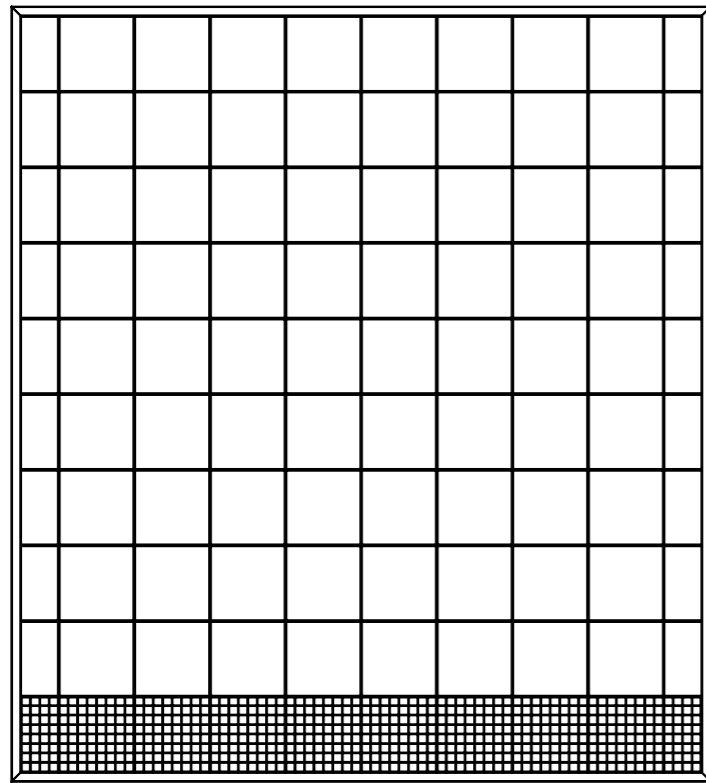


QTY.	PART NUMBER	DESCRIPTION	MATERIAL	WEIGHT
1	p0072-008	Bottom Side Mesh	Plain Carbon Steel	998.14
1	p0072-A03	Frame Stage 2	Assembly	14244.68




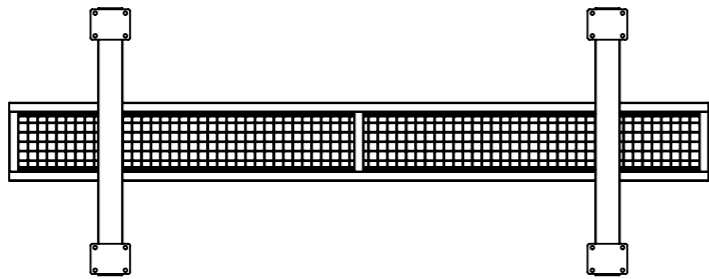
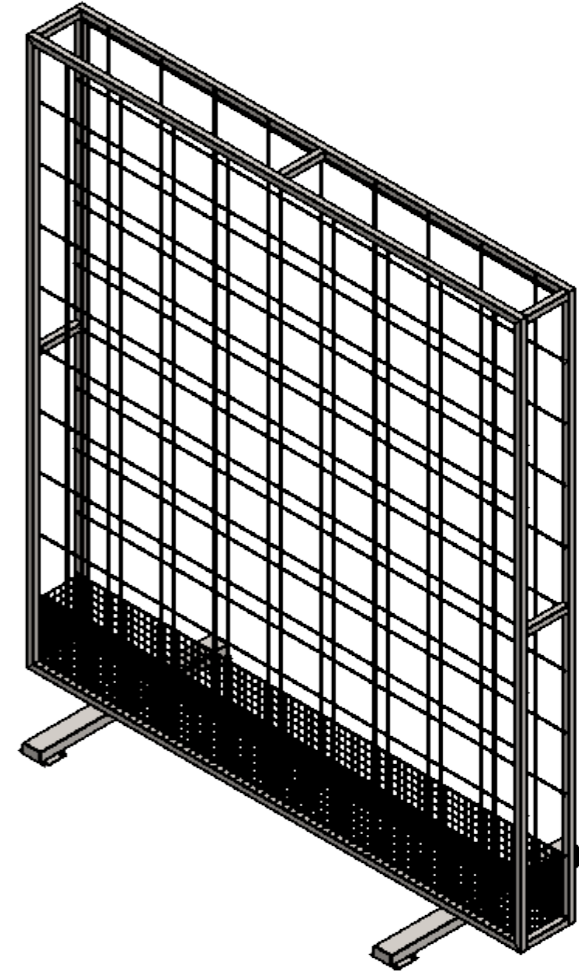
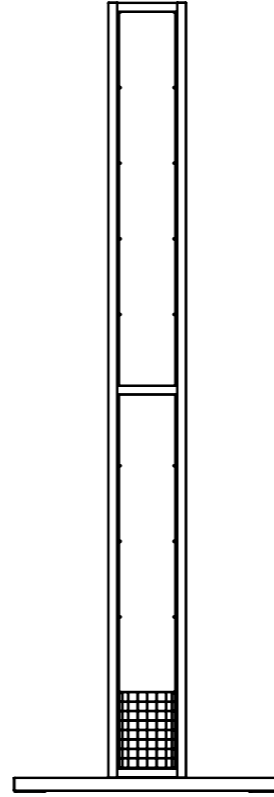
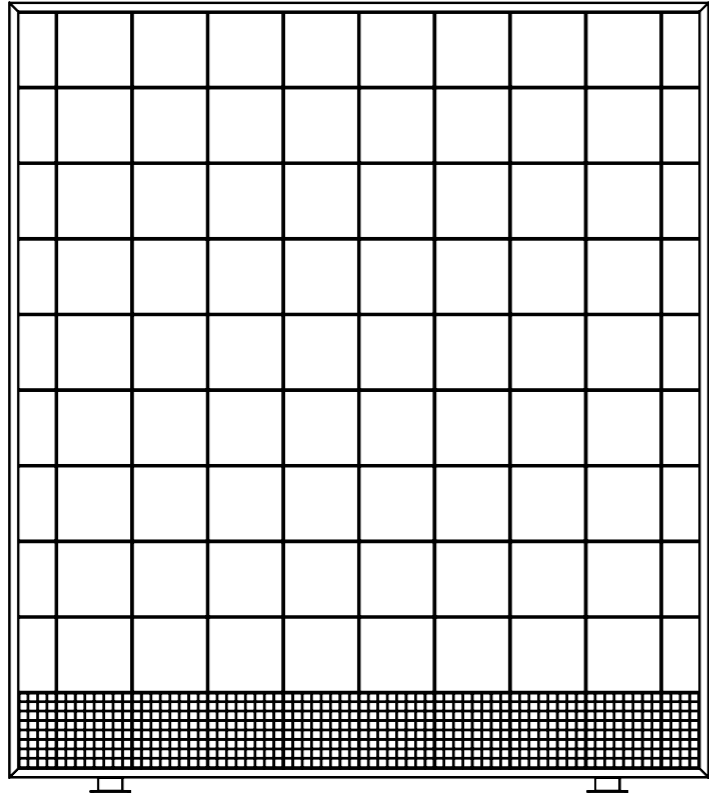
QTY.	PART NUMBER	DESCRIPTION	MATERIAL	WEIGHT
8	p0072-003	Frame Spacer	Plain Carbon Steel	180.74
2	p0072-009	Small Mesh End	Plain Carbon Steel	91.16
1	p0072-010	Small Mesh	Plain Carbon Steel	861.60
1	p0072-A04	Frame Stage 3	Assembly	15242.82

UNLESS OTHERWISE SPECIFIED: DIMENSIONS ARE IN MILLIMETERS		FINISH: Bare	DEBUR AND BREAK SHARP EDGES	DO NOT SCALE DRAWING	REVISION A
TOLERANCES: LINEAR: +/- 1mm ANGULAR: +/- 1degree				Designed 2 Build Frame Stage 4	
DRAWN	NAME Merlin	DATE 2017-02-27	STOCK: STOCK SIZE:		
Q.A	NAME Merlin	DATE 2017-04-17		TITLE:	
		MATERIAL: Assembly		PART NO. p0072-A05	A3
		WEIGHT: 17732.65		SCALE:1:20	SHEET 17 OF 20



QTY.	PART NUMBER	DESCRIPTION	MATERIAL	WEIGHT
1	p0072-A04	Frame Stage 3	Assembly	15242.82
1	p0072-A05	Frame Stage 4	Assembly	17732.65

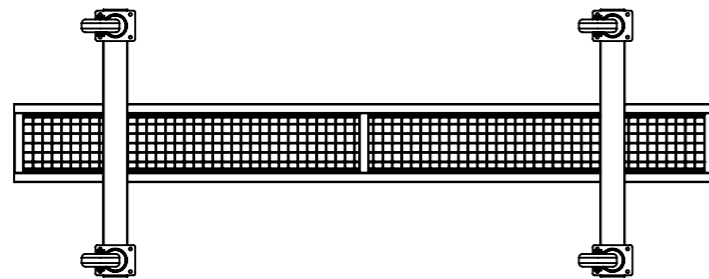
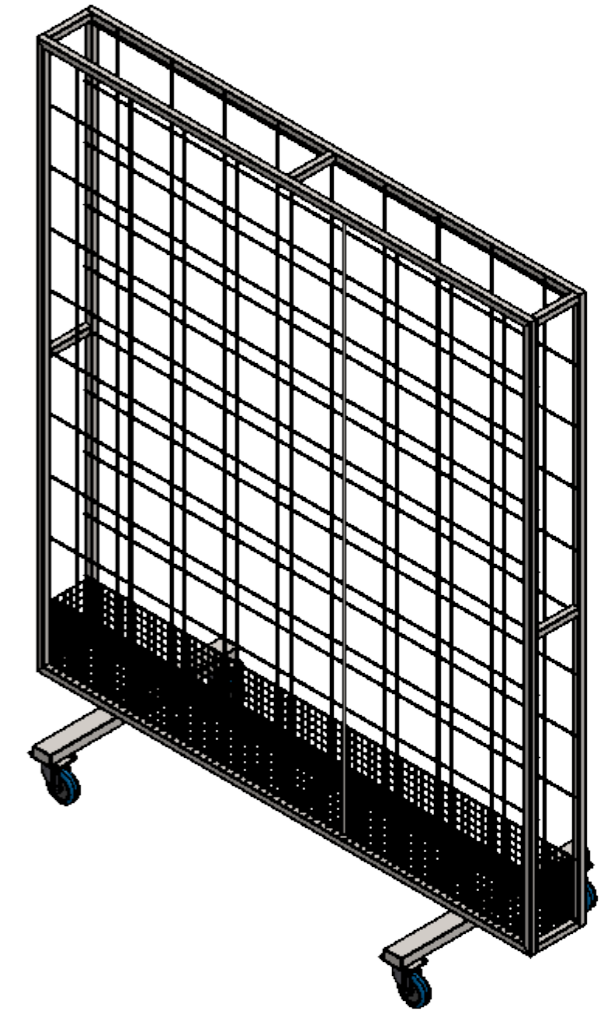
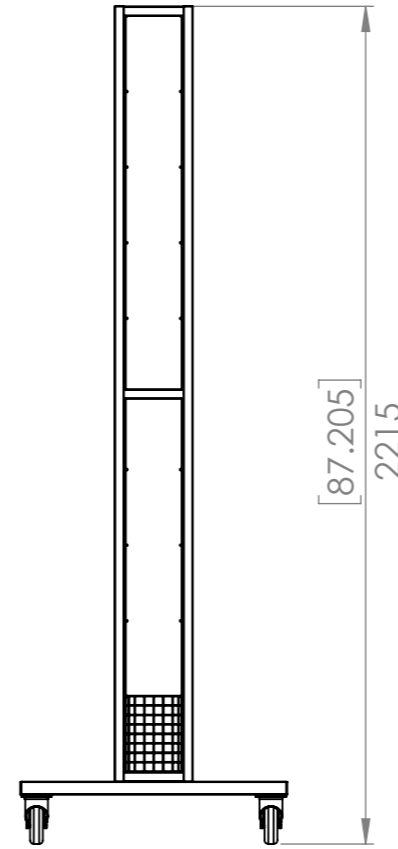
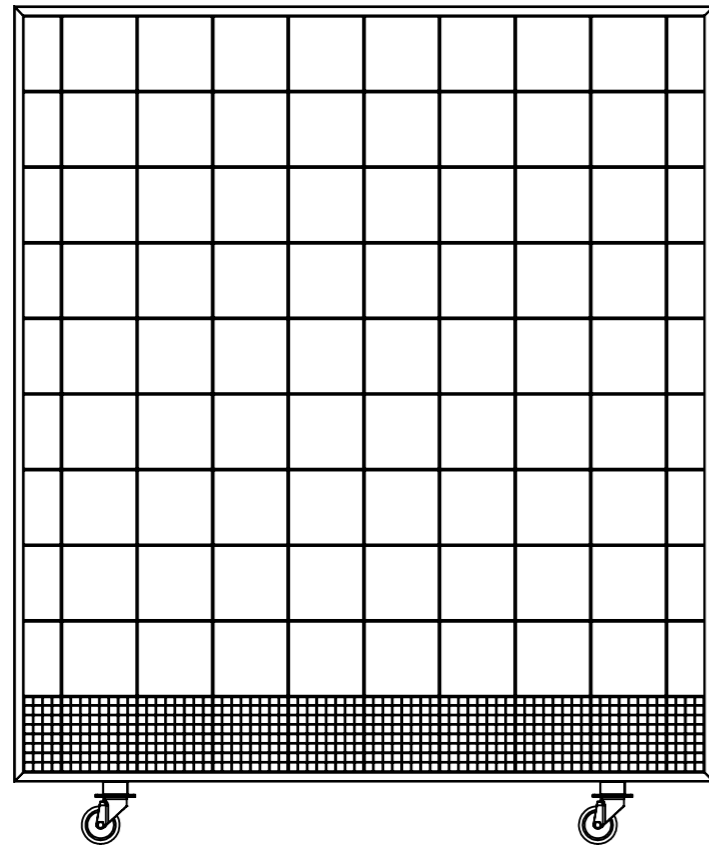
UNLESS OTHERWISE SPECIFIED: DIMENSIONS ARE IN MILLIMETERS		FINISH: Bare		DEBUR AND BREAK SHARP EDGES		DO NOT SCALE DRAWING		REVISION A	
TOLERANCES: LINEAR: +/- 1mm ANGULAR: +/- 1degree						Designed 2 Build Frame Stage 5			
NAME	DATE	STOCK:	TITLE:						
DRAWN Merlin	2017-02-27	STOCK SIZE:							
Q.A Merlin	2017-04-17								
		MATERIAL: Assembly		PART NO. p0072-A06		A3			
		WEIGHT: 32975.46		SCALE:1:20		SHEET 18 OF 20			



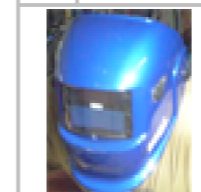
UNLESS OTHERWISE SPECIFIED: DIMENSIONS ARE IN MILLIMETERS		FINISH: Paint		DEBUR AND BREAK SHARP EDGES		DO NOT SCALE DRAWING		REVISION A	
TOLERANCES: LINEAR: +/- 1mm ANGULAR: +/- 1degree						Designed 2 Build			
DRAWN Merlin		DATE 2017-02-27		STOCK:		TITLE: Frame Final			
Q.A Merlin		2017-04-17		STOCK SIZE:					
				MATERIAL: Assembly		PART NO. p0072-A07		A3	
				WEIGHT: 40071.67		SCALE:1:20		SHEET 19 OF 20	



QTY.	PART NUMBER	DESCRIPTION	MATERIAL	WEIGHT
2	p0072-A01	Leg	Assembly	3548.10
1	p0072-A06	Frame Stage 5	Assembly	32975.46



UNLESS OTHERWISE SPECIFIED: DIMENSIONS ARE IN MILLIMETERS		FINISH: Paint		DEBUR AND BREAK SHARP EDGES		DO NOT SCALE DRAWING		REVISION A	
TOLERANCES: LINEAR: +/- 1mm ANGULAR: +/- 1degree						Designed 2 Build Plant Wall Complete			
DRAWN Merlin		DATE 2017-02-28		STOCK:					
Q.A Merlin		DATE 2017-04-17		STOCK SIZE:					
				MATERIAL: Assembly		PART NO. p0072-A08		A3	
				WEIGHT: 41171.76		SCALE:1:20		SHEET 20 OF 20	



QTY.	PART NUMBER	DESCRIPTION	MATERIAL	WEIGHT
4	p0072-011	Castor 100mm		
1	p0072-A07	Frame Final	Assembly	40071.67