

These plans and dimensions are suited to an 8ft x 5ft box trailer.  
 Modify these dimensions to suit your own trailer.

**DISCLAIMER:**

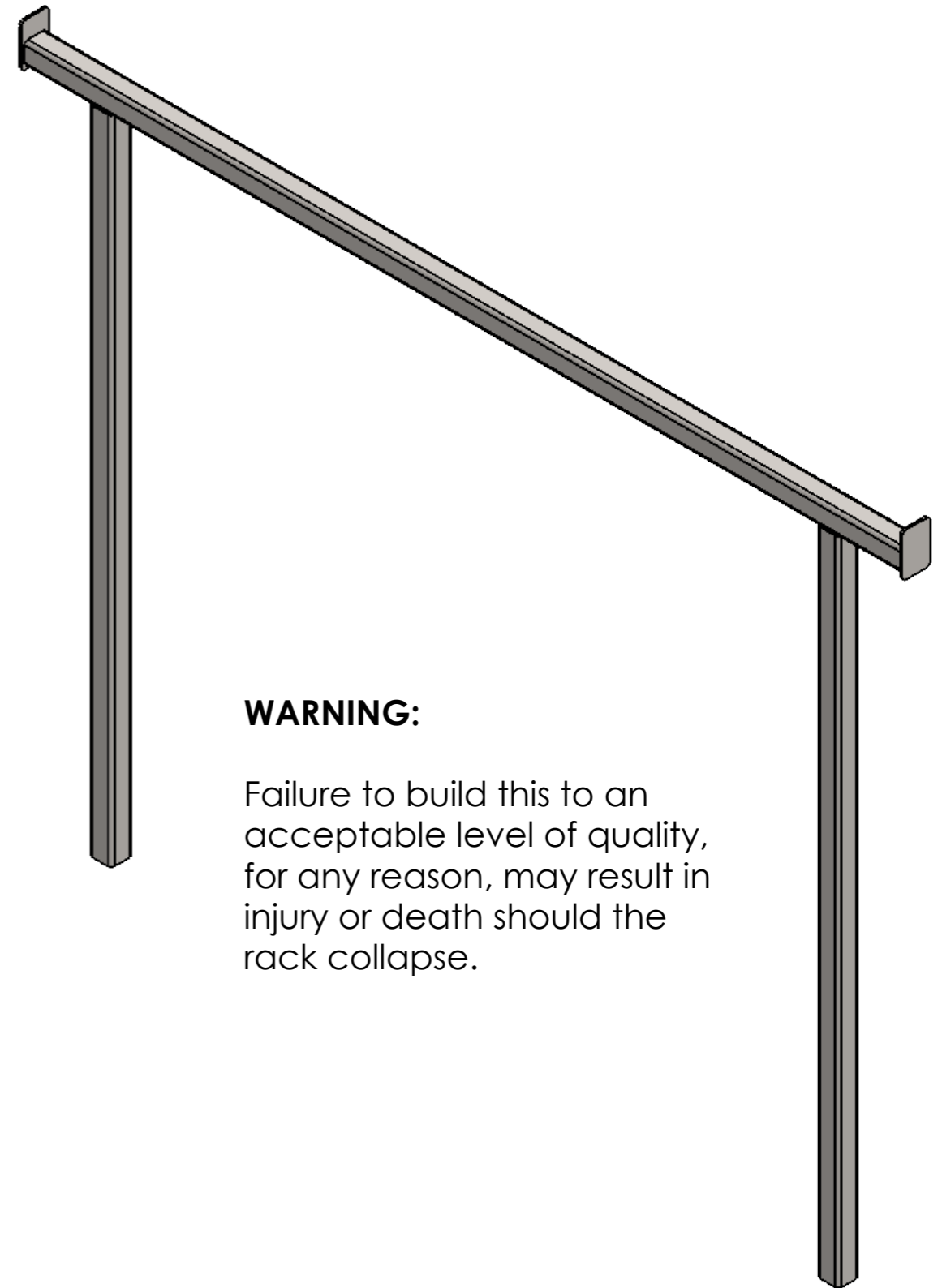
I have built these racks and have used them without a problem.

Be warned that I am not an engineer and there has been very little in the way of strength analysis done on this. It is all eyeball engineering.

I provide the plans as an example of something that has worked for me. They are provided for educational purposes only. I want to stress in the strongest possible terms that if you choose to build something from these plans then all consequences, both good and bad, are on you.

I have no control of the quality of construction nor the modifications you may make to the design. I take no responsibility for anything you choose to do with these plans.


If you do not fully understand everything above or if you do not fully agree with it then DO NOT USE THESE PLANS.

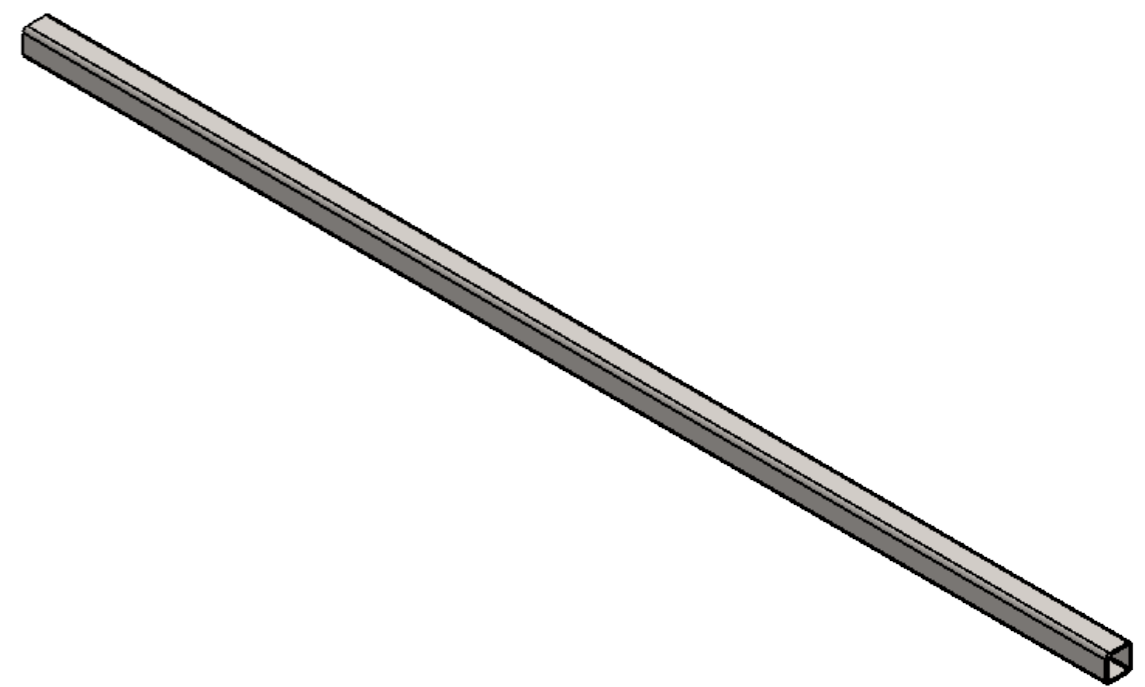
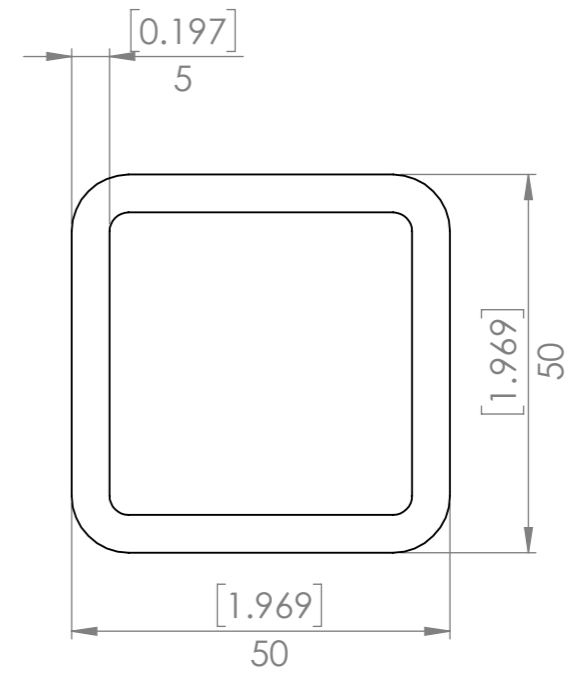
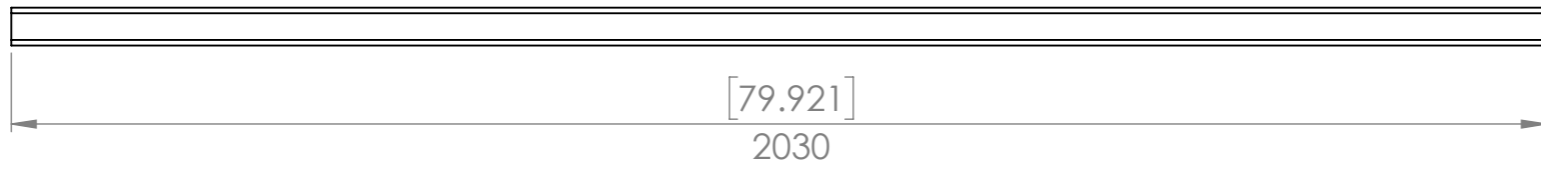


**WARNING:**

Failure to build this to an acceptable level of quality, for any reason, may result in injury or death should the rack collapse.

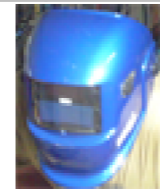
QTY.	PART NUMBER	DESCRIPTION	MATERIAL	WEIGHT
1	p0093-001	Crossmember	Plain Carbon Steel	13571.00
2	p0093-002	Leg	Plain Carbon Steel	10027.83
2	p0093-003	End Cap	Plain Carbon Steel	250.15

UNLESS OTHERWISE SPECIFIED: DIMENSIONS ARE IN MILLIMETERS		FINISH: Gal or Paint	DEBUR AND BREAK SHARP EDGES	DO NOT SCALE DRAWING	REVISION A
TOLERANCES: LINEAR: +/- 1mm ANGULAR: +/- 1degree		TITLE:  <b>Designed 2 Build</b>  <b>Rack</b>			
DRAWN Merlin	DATE 2017-05-16				
Q.A Merlin	DATE 2017-05-21	STOCK: STOCK SIZE:		PART NO. <b>p0093-A01</b>	
		MATERIAL: Assembly		A3	
		WEIGHT: 34126.97		SCALE:1:10 SHEET 1 OF 5	

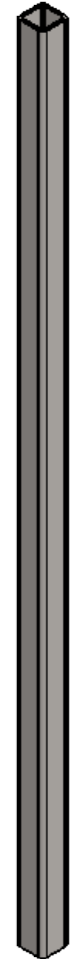
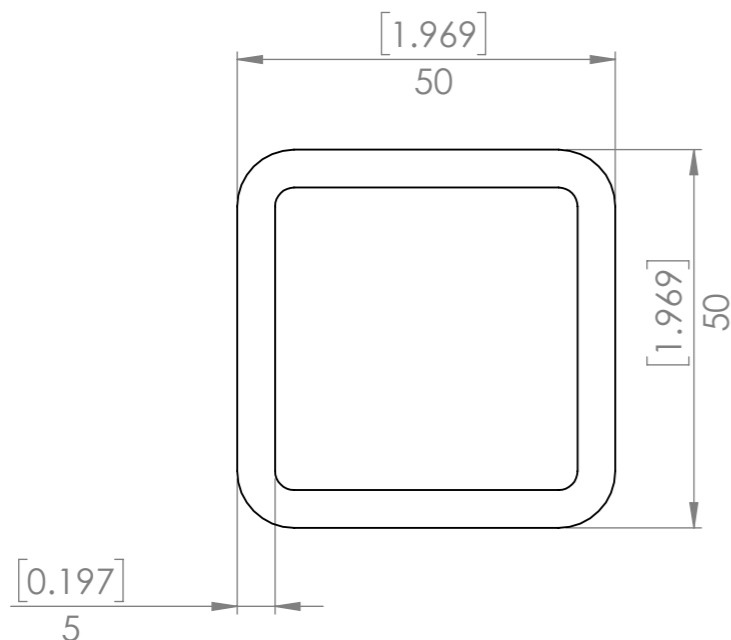



These plans and dimensions are suited to an 8ft x 5ft box trailer.  
 Modify these dimensions to suit your own trailer.

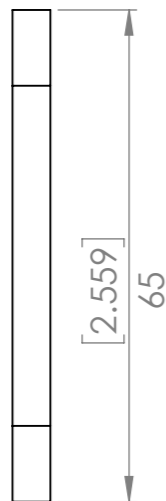
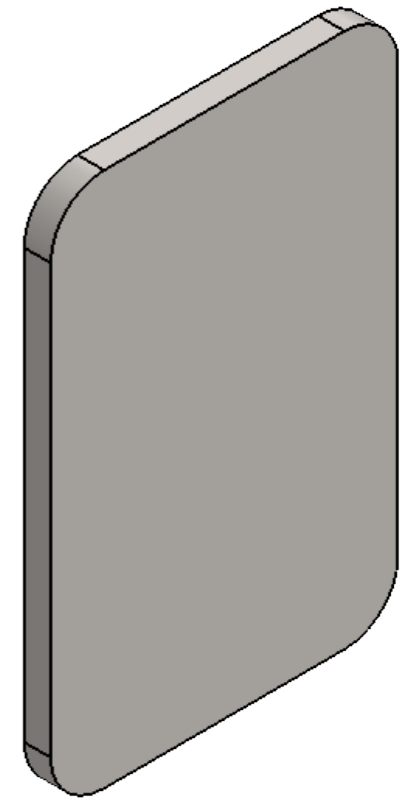
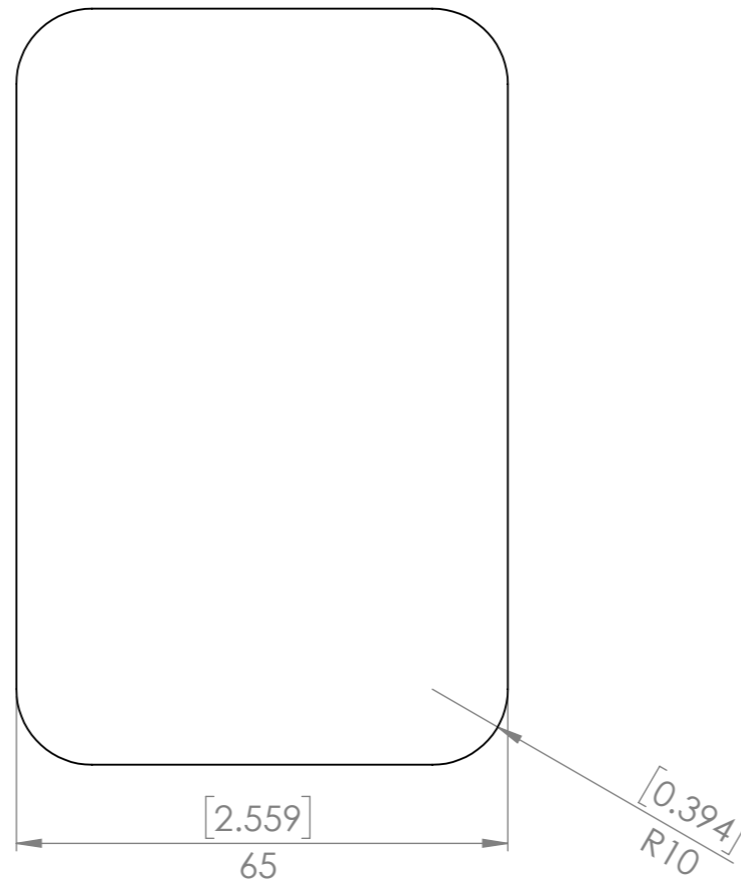
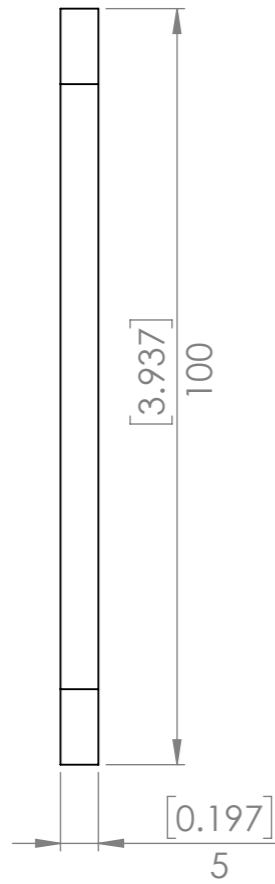
UNLESS OTHERWISE SPECIFIED: DIMENSIONS ARE IN MILLIMETERS		FINISH:		DEBUR AND BREAK SHARP EDGES		DO NOT SCALE DRAWING		REVISION		A	
TOLERANCES: LINEAR: +/- 1mm ANGULAR: +/- 1degree											
	NAME	DATE				TITLE:					
DRAWN	Merlin	2017-05-16				Crossmember					
Q.A	Merlin	2017-05-21				STOCK:		PART NO.			
						SHS		p0093-001		A3	
						STOCK SIZE:					
						50 x50x5mm					
						MATERIAL:					
						Plain Carbon Steel					
						WEIGHT: 13571.00		SCALE:1:10		SHEET 2 OF 5	




These plans and dimensions are suited to an 8ft x 5ft box trailer.  
 Modify these dimensions to suit your own trailer.

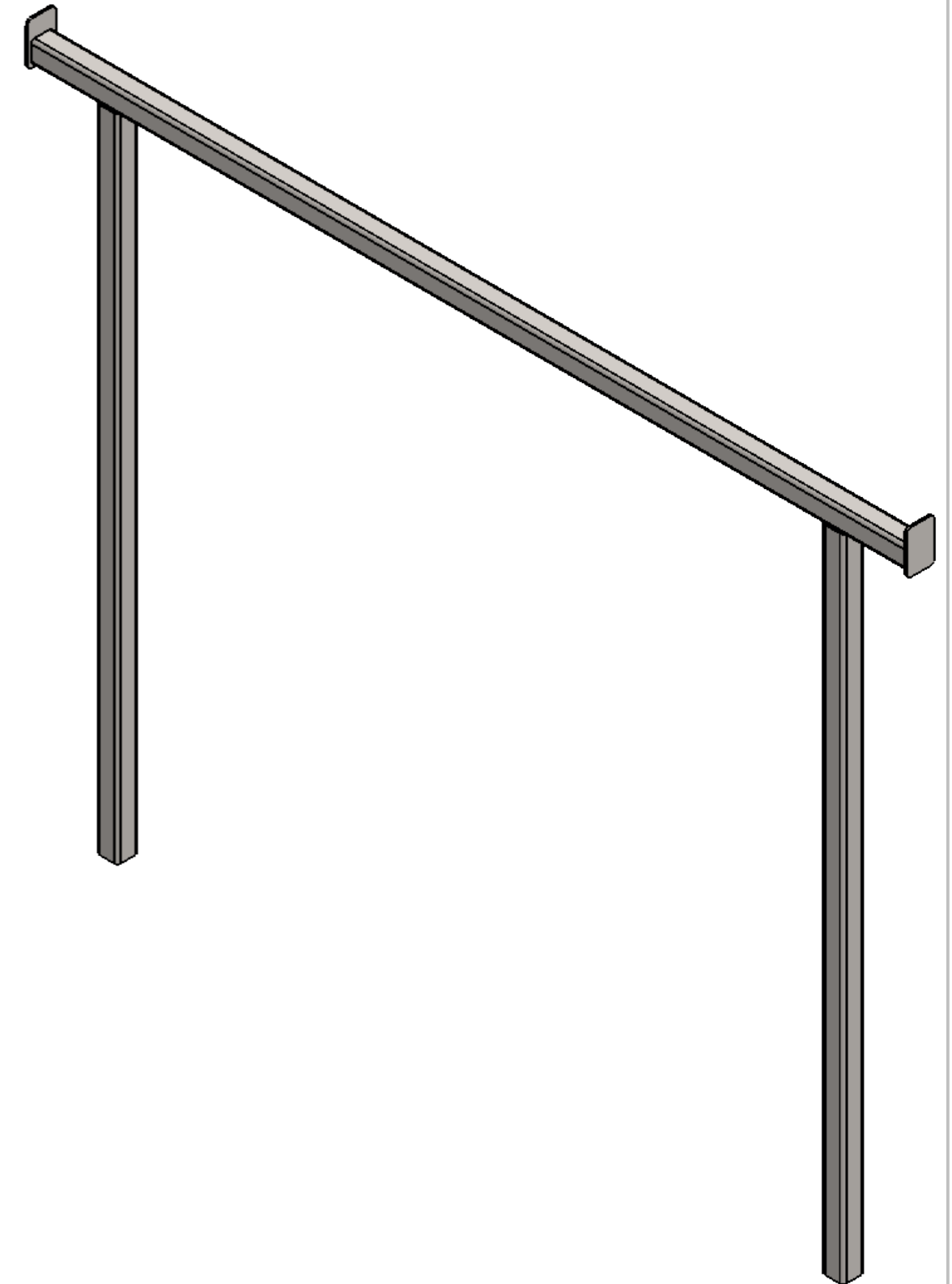
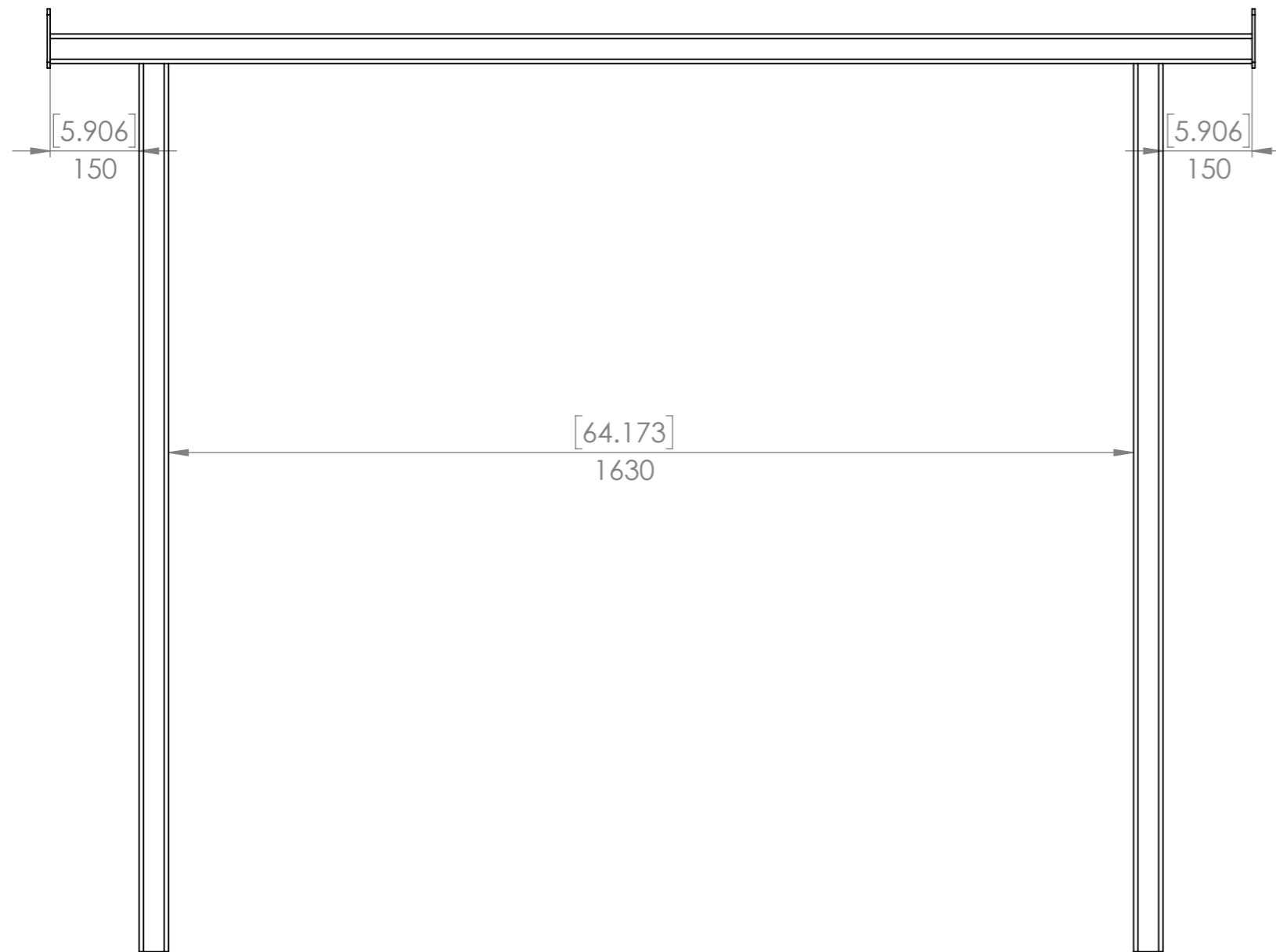


UNLESS OTHERWISE SPECIFIED: DIMENSIONS ARE IN MILLIMETERS		FINISH:		DEBUR AND BREAK SHARP EDGES		DO NOT SCALE DRAWING		REVISION A	
TOLERANCES: LINEAR: +/- 1mm ANGULAR: +/- 1degree						Designed 2 Build			
DRAWN		NAME		DATE		TITLE:  Leg			
		Merlin		2017-05-16					
Q.A		NAME		DATE		PART NO. p0093-002			
		Merlin		2017-05-21					
		STOCK:		SHS		SCALE: 1:10			
		STOCK SIZE:		50 x 50 x 5					
		MATERIAL:		Plain Carbon Steel		WEIGHT: 10027.83		SHEET 3 OF 5	



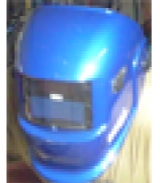
These plans and dimensions are suited to an 8ft x 5ft box trailer.  
Modify these dimensions to suit your own trailer.

UNLESS OTHERWISE SPECIFIED: DIMENSIONS ARE IN MILLIMETERS		FINISH:		DEBUR AND BREAK SHARP EDGES		DO NOT SCALE DRAWING		REVISION A	
TOLERANCES: LINEAR: +/- 1mm ANGULAR: +/- 1degree						<b>Designed 2 Build</b>  <b>End Cap</b>			
DRAWN	Merlin	DATE	2017-05-16						
Q.A	Merlin	DATE	2017-05-21			PART NO.		A3	
		STOCK:		SHS		WEIGHT:		250.15	
		STOCK SIZE:		50 x 50 x 5		SCALE:		1:1	
		MATERIAL:		Plain Carbon Steel		SHEET		4 OF 5	



These plans and dimensions are suited to an 8ft x 5ft box trailer.  
Modify these dimensions to suit your own trailer.

QTY.	PART NUMBER	DESCRIPTION	MATERIAL	WEIGHT
1	p0093-001	Crossmember	Plain Carbon Steel	13571.00
2	p0093-002	Leg	Plain Carbon Steel	10027.83
2	p0093-003	End Cap	Plain Carbon Steel	250.15

UNLESS OTHERWISE SPECIFIED: DIMENSIONS ARE IN MILLIMETERS		FINISH: Gal or Paint		DEBUR AND BREAK SHARP EDGES		DO NOT SCALE DRAWING		REVISION A	
TOLERANCES: LINEAR: +/- 1mm ANGULAR: +/- 1degree						Designed 2 Build			
DRAWN Merlin		DATE 2017-05-16				Rack			
Q.A Merlin		2017-05-21							
		STOCK:				PART NO.		p0093-A01	
		STOCK SIZE:				SCALE:1:10		SHEET 5 OF 5	
		MATERIAL: Assembly		WEIGHT: 34126.97					