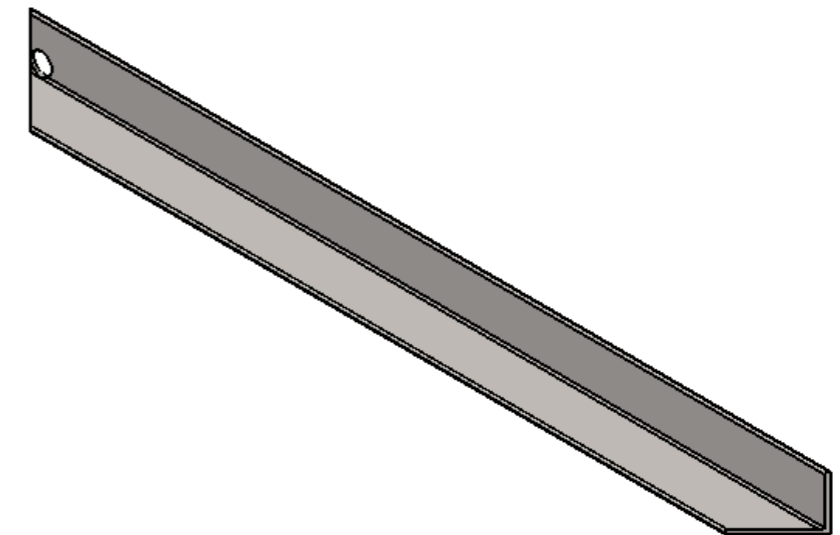
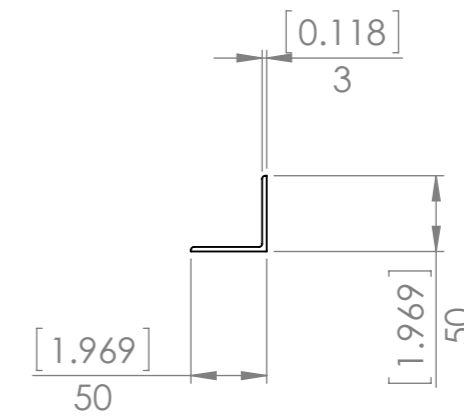
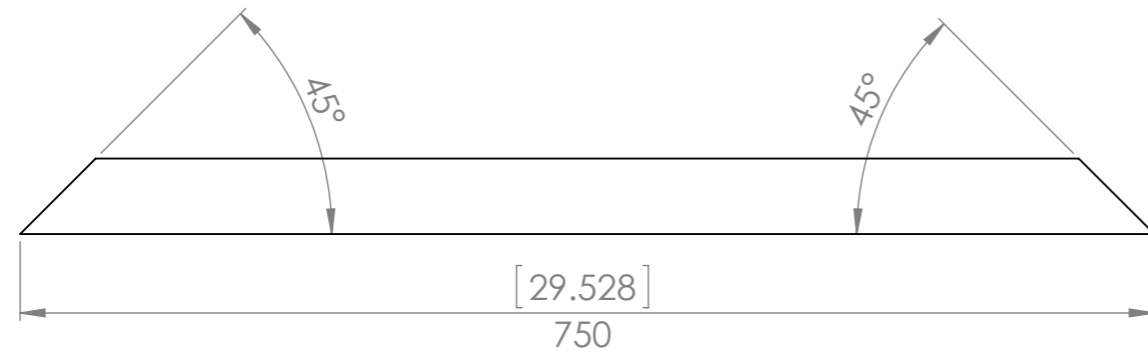



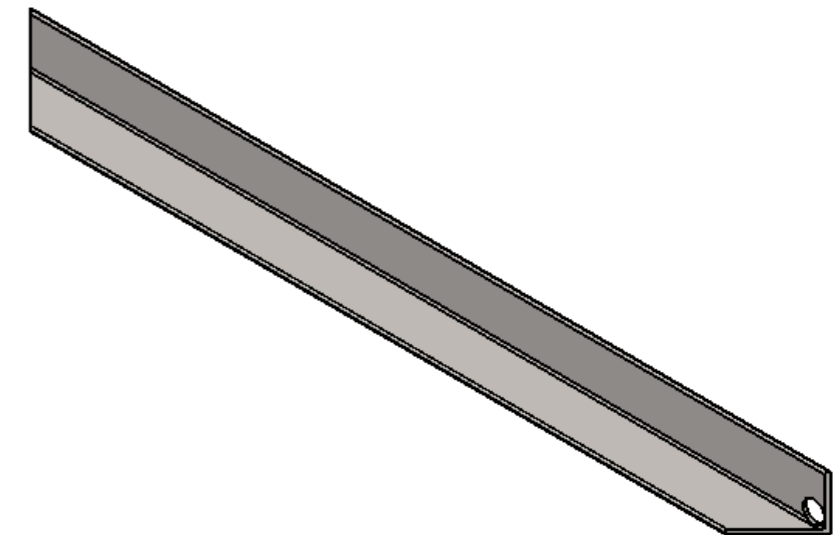
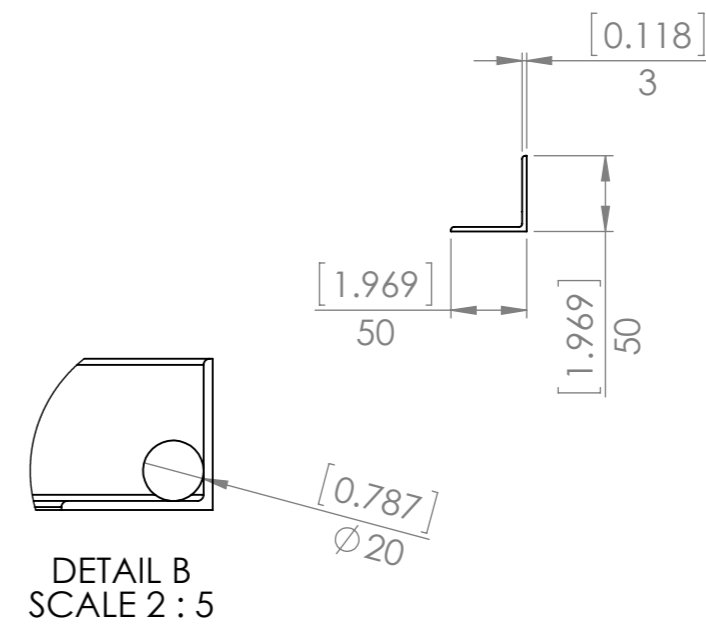
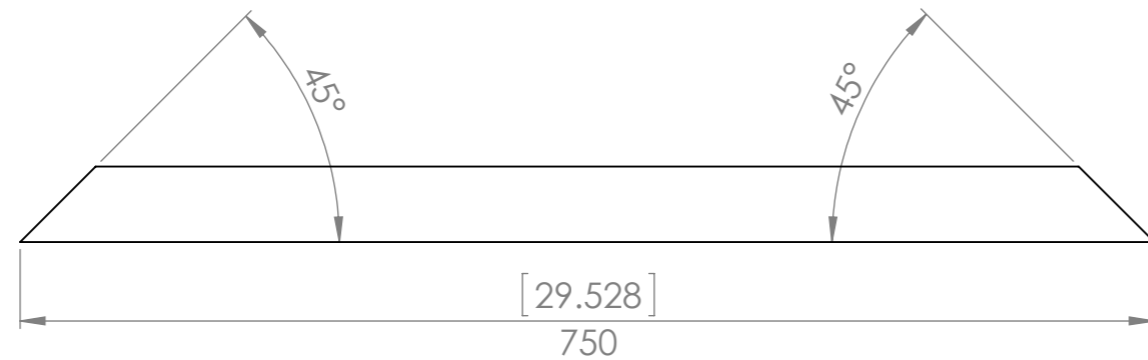
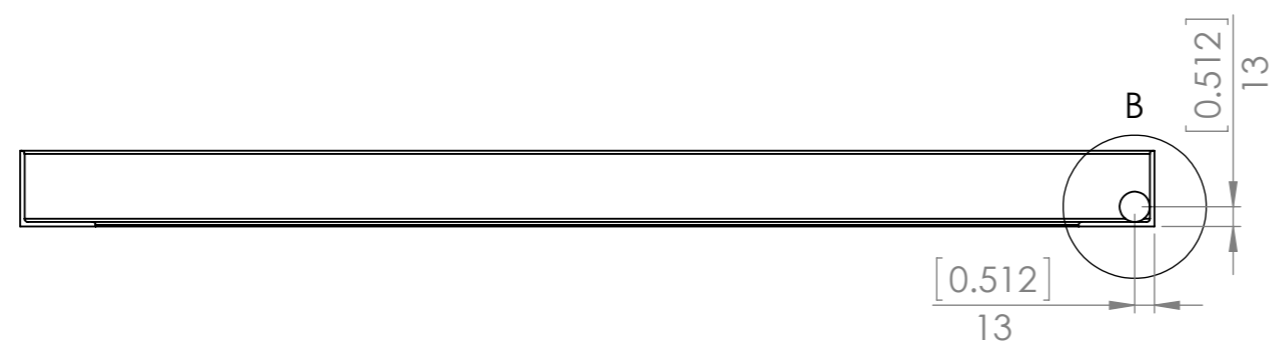
DETAIL A  
SCALE 2 : 5



When the axel is poistioned in the hole it should touch both sides of the end angle.

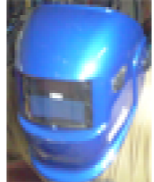
The axel could be done more simply but part of the aim of this project is to get practice at lots of different weld joins and welding positions.

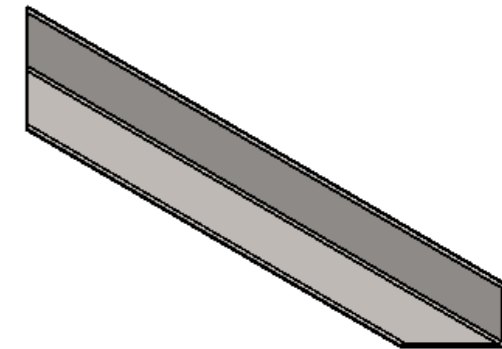
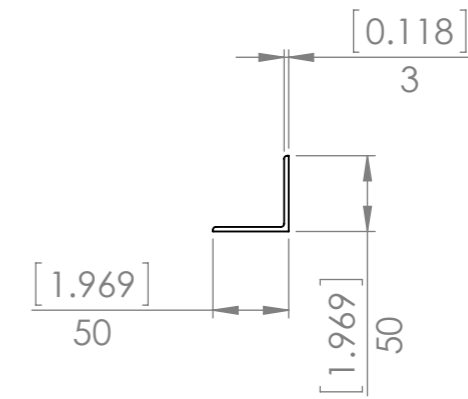
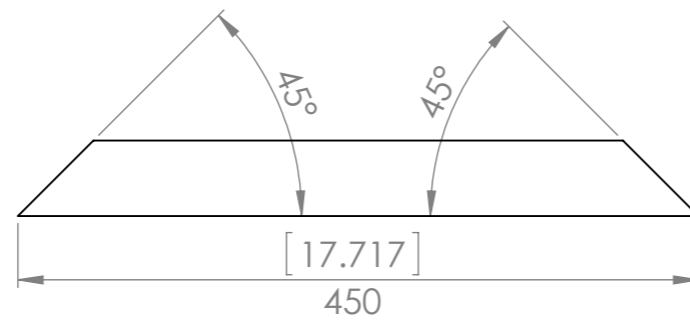
UNLESS OTHERWISE SPECIFIED: DIMENSIONS ARE IN MILLIMETERS		FINISH: Painted		DEBUR AND BREAK SHARP EDGES		DO NOT SCALE DRAWING		REVISION A			
TOLERANCES: LINEAR: +/- 1mm ANGULAR: +/- 1degree						TITLE: <b>Designed 2 Build</b>  <b>Bottom Side 1</b>					
DRAWN Merlin		DATE 2017-01-12						DWG NO. p0070-001		A3	
Q.A Merlin		DATE 2017-01-30						SCALE:1:5		SHEET 1 OF 30	
				MATERIAL: Plain Carbon Steel		WEIGHT: 1628.78					




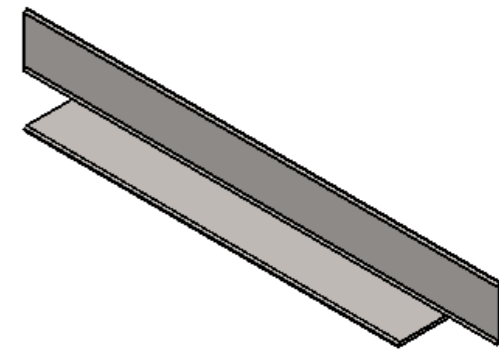
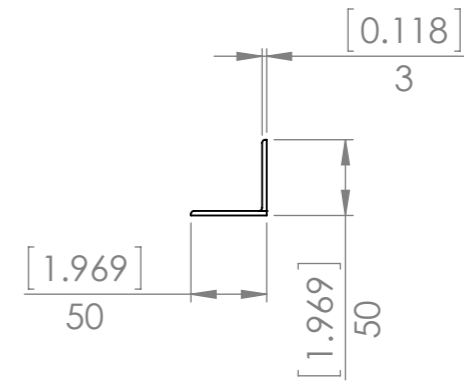
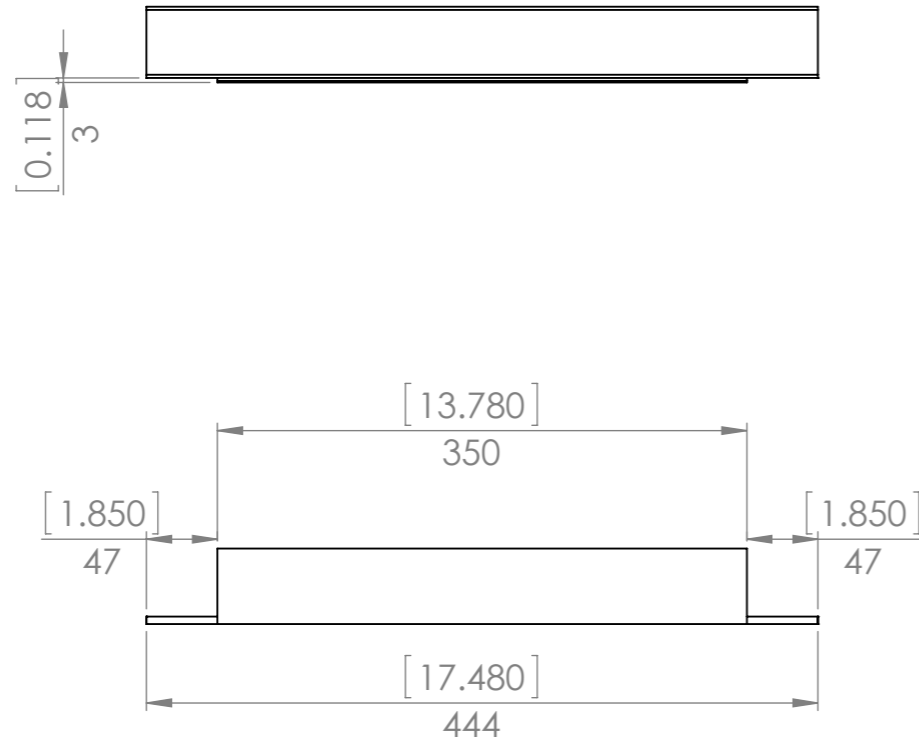
When the axel is positioned in the hole it should touch both sides of the end angle.


The axel could be done more simply but part of the aim of this project is to get practice at lots of different weld joins and welding positions.

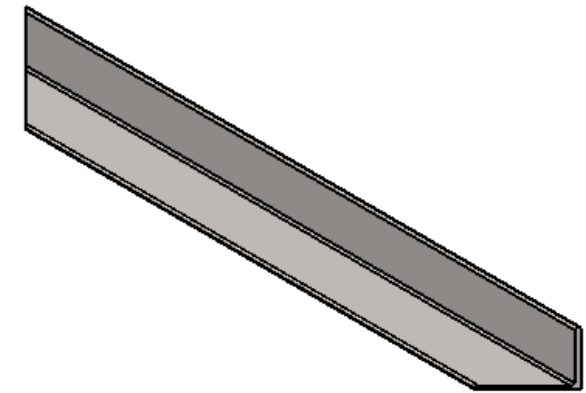
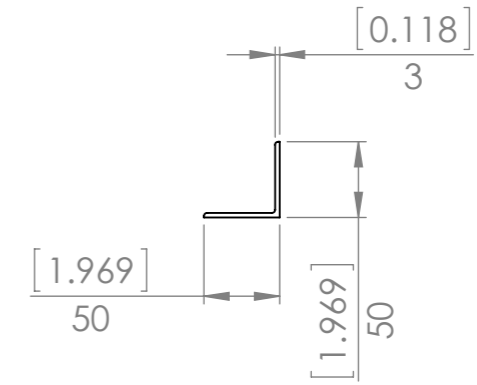
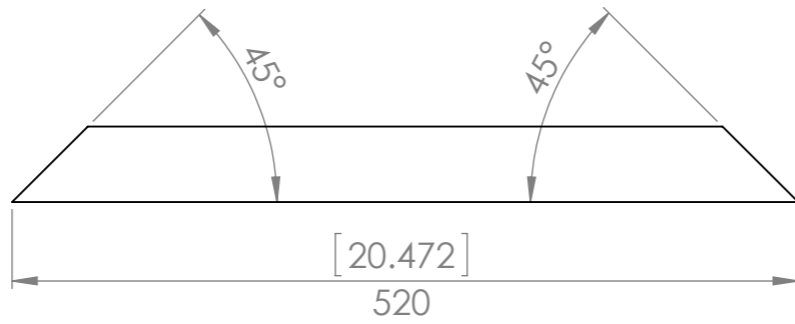
UNLESS OTHERWISE SPECIFIED: DIMENSIONS ARE IN MILLIMETERS		FINISH: Painted		DEBUR AND BREAK SHARP EDGES		DO NOT SCALE DRAWING		REVISION A			
TOLERANCES: LINEAR: +/- 1mm ANGULAR: +/- 1degree						TITLE: <b>Designed 2 Build</b>  <b>Bottom Side 2</b>					
DRAWN	Merlin	DATE	2017-01-12								
Q.A	Merlin	DATE	2017-01-30								
				MATERIAL: Plain Carbon Steel		DWG NO. p0070-002		A3			
				WEIGHT: 1628.83		SCALE:1:5		SHEET 2 OF 30			




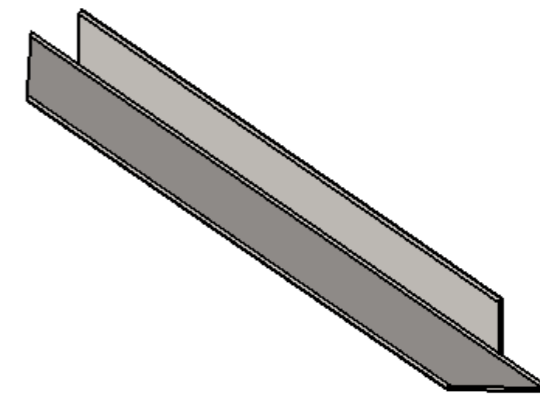
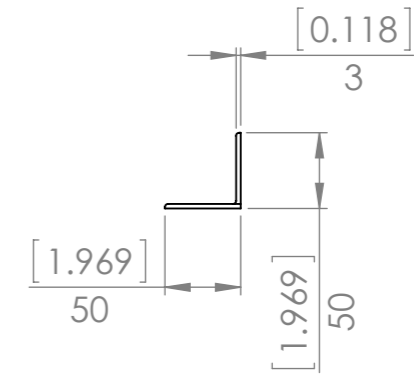
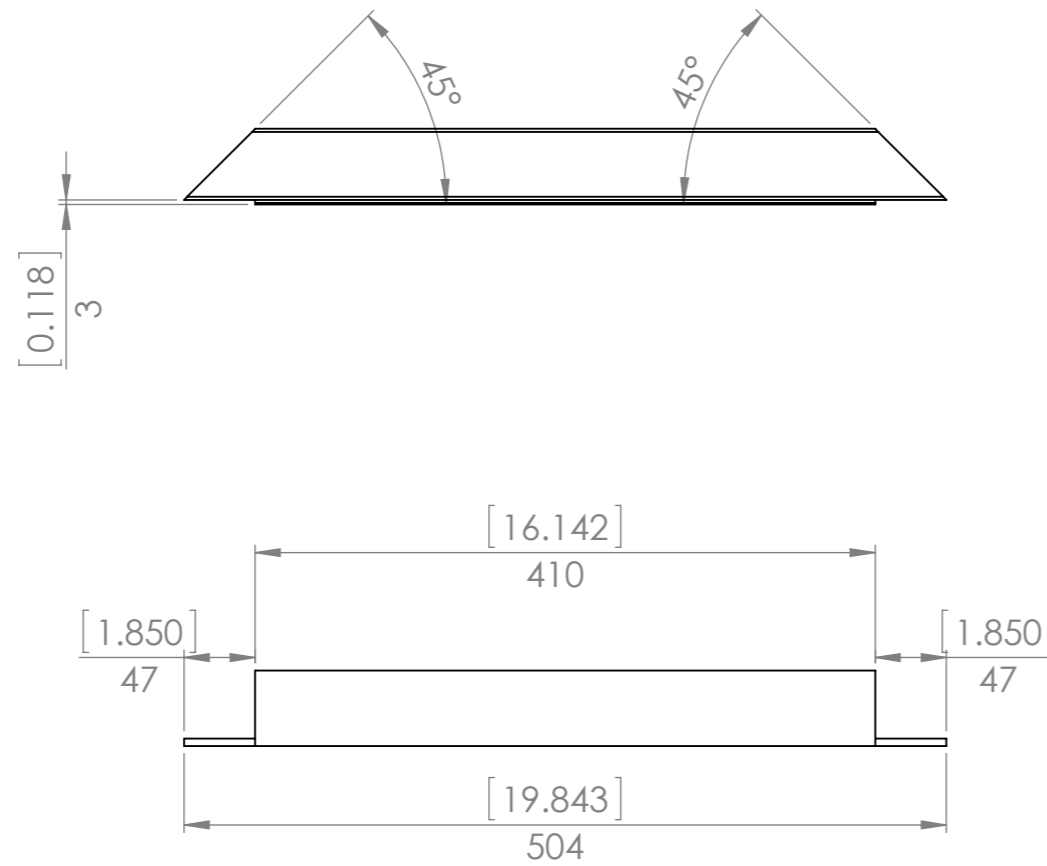
UNLESS OTHERWISE SPECIFIED: DIMENSIONS ARE IN MILLIMETERS		FINISH: <b>Painted</b>		DEBUR AND BREAK SHARP EDGES		DO NOT SCALE DRAWING		REVISION A	
TOLERANCES: LINEAR: +/- 1mm ANGULAR: +/- 1degree						<b>Designed 2 Build</b>			
	NAME	DATE				<b>End</b>			
DRAWN	Merlin	2017-01-12							
Q.A	Merlin	2017-01-30							
				MATERIAL: <b>Plain Carbon Steel</b>		DWG NO. <b>p0070-003</b>		A3	
		WEIGHT: 957.24		SCALE: 1:5		SHEET 3 OF 30			




UNLESS OTHERWISE SPECIFIED: DIMENSIONS ARE IN MILLIMETERS		FINISH: Painted		DEBUR AND BREAK SHARP EDGES		DO NOT SCALE DRAWING		REVISION A			
TOLERANCES: LINEAR: +/- 1mm ANGULAR: +/- 1degree						TITLE: <b>Designed 2 Build</b>  <b>Cross Member</b>					
DRAWN Merlin		DATE 2017-01-12									
Q.A Merlin		DATE 2017-01-30									
		MATERIAL: Plain Carbon Steel		DWG NO. p0070-004		A3					
		WEIGHT: 895.47		SCALE: 1:5		SHEET 4 OF 30					

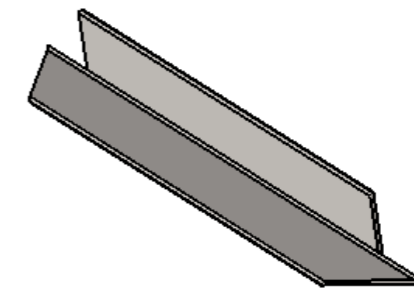
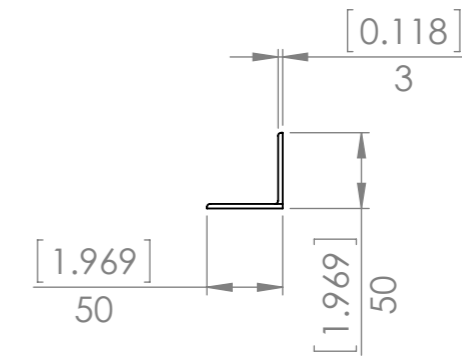
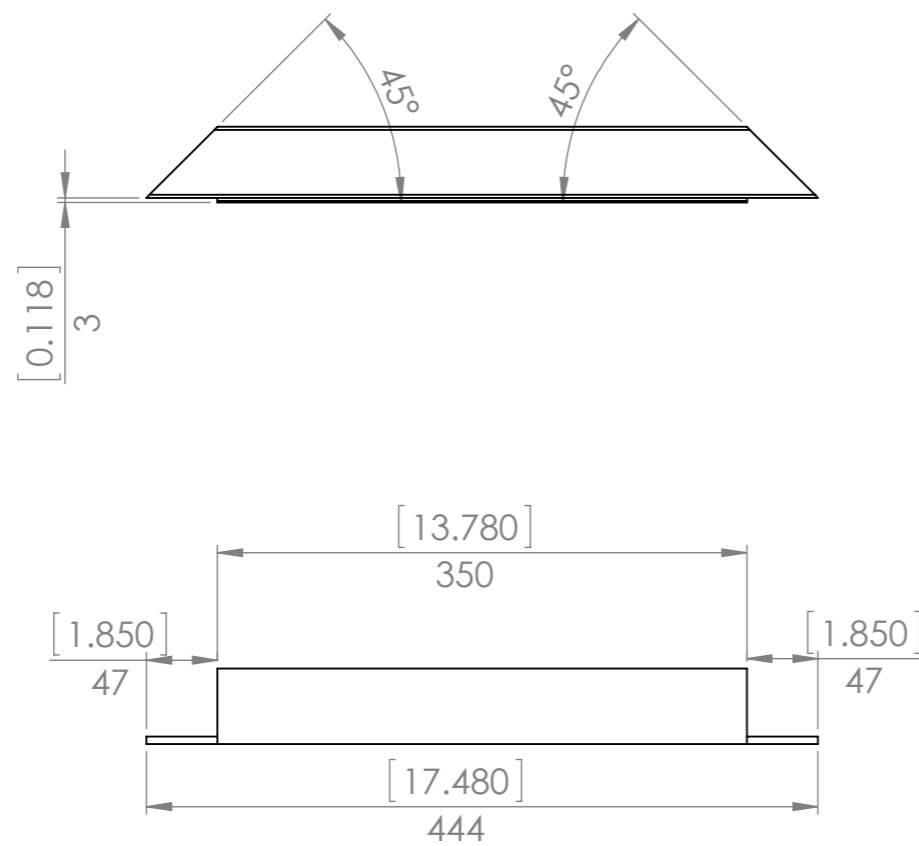


UNLESS OTHERWISE SPECIFIED: DIMENSIONS ARE IN MILLIMETERS		FINISH: Painted		DEBUR AND BREAK SHARP EDGES		DO NOT SCALE DRAWING		REVISION A		
TOLERANCES: LINEAR: +/- 1mm ANGULAR: +/- 1degree						Designed 2 Build				
DRAWN Merlin		DATE 2017-01-12				Top Side				
Q.A Merlin		DATE 2017-01-30								
						MATERIAL: Plain Carbon Steel		DWG NO. p0070-005		A3
						WEIGHT: 1115.00		SCALE:1:5		SHEET 5 OF 30




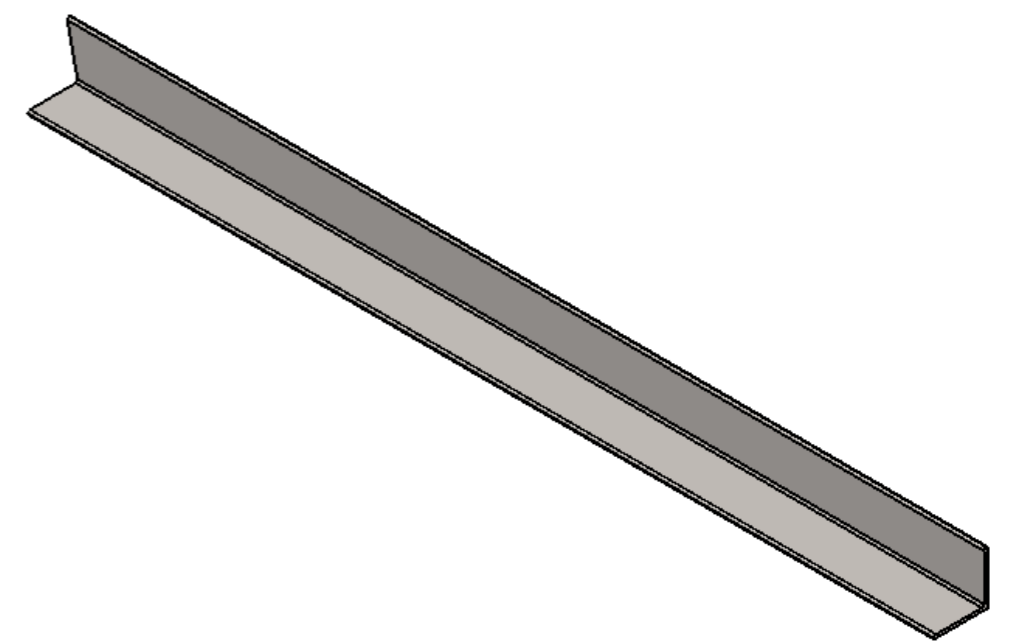
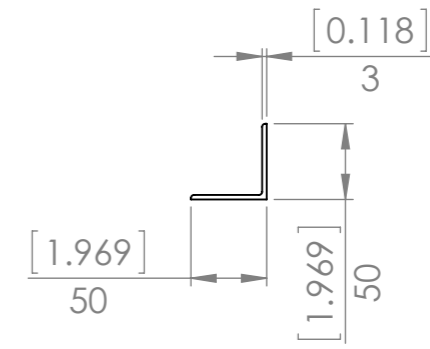
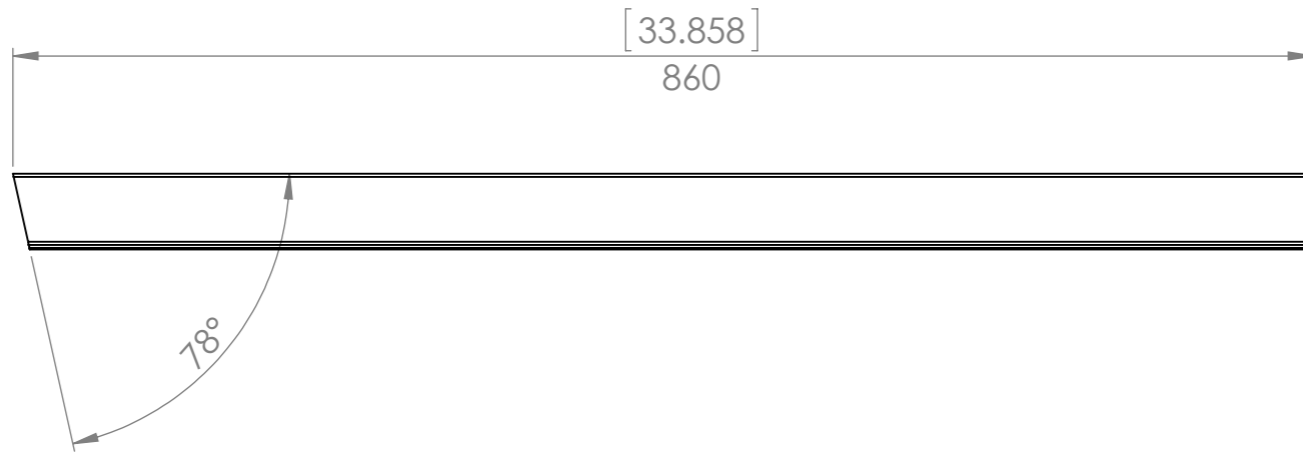
Another part which could be greatly simplified if you want to. I did it this way because, as I have said, part of the reason behind this design is to get welding practice.


UNLESS OTHERWISE SPECIFIED: DIMENSIONS ARE IN MILLIMETERS		FINISH: Painted		DEBUR AND BREAK SHARP EDGES		DO NOT SCALE DRAWING		REVISION A	
TOLERANCES: LINEAR: +/- 1mm ANGULAR: +/- 1degree						TITLE:  <b>Shelf Side</b>			
DRAWN	Merlin	DATE	2017-01-12					DWG NO.	p0070-006
Q.A	Merlin	DATE	2017-01-30			MATERIAL:	Plain Carbon Steel		
						WEIGHT: 980.18	SCALE: 1:5	SHEET 6 OF 30	



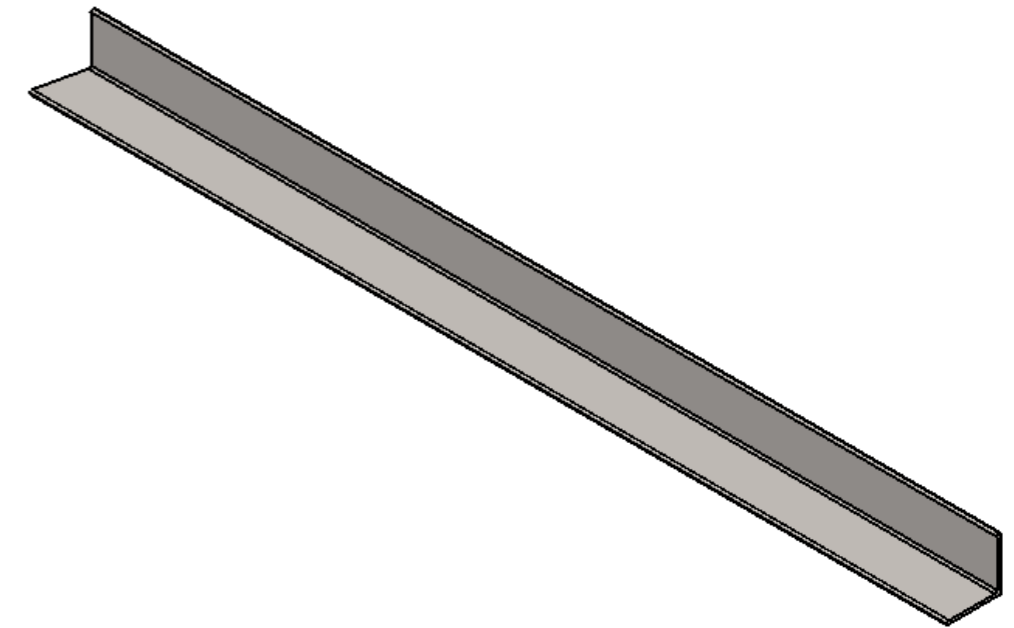
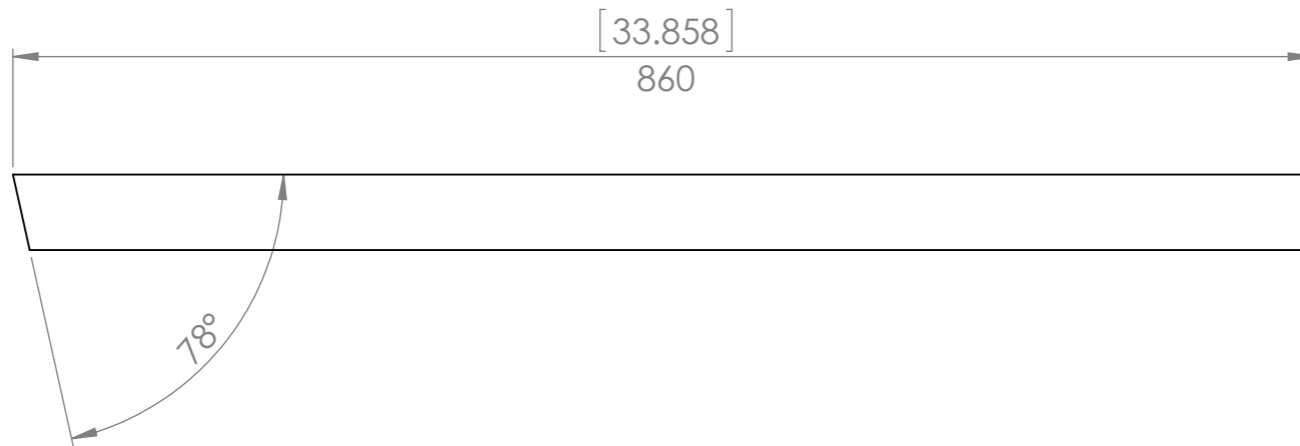
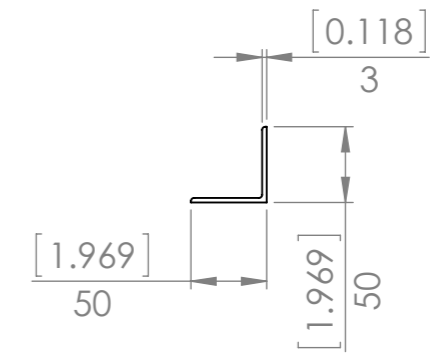
Another part which could be greatly simplified if you want to. I did it this way because, as I have said, part of the reason behind this design is to get welding practice.


UNLESS OTHERWISE SPECIFIED: DIMENSIONS ARE IN MILLIMETERS		FINISH: Painted		DEBUR AND BREAK SHARP EDGES		DO NOT SCALE DRAWING		REVISION A	
TOLERANCES: LINEAR: +/- 1mm ANGULAR: +/- 1degree						TITLE:  <b>Designed 2 Build</b>  <b>Shelf End</b>			
DRAWN	Merlin	DATE	2017-01-12						
Q.A	Merlin	DATE	2017-01-30						
		MATERIAL: Plain Carbon Steel		DWG NO. p0070-007		A3			
		WEIGHT: 844.40		SCALE:1:5		SHEET 7 OF 30			

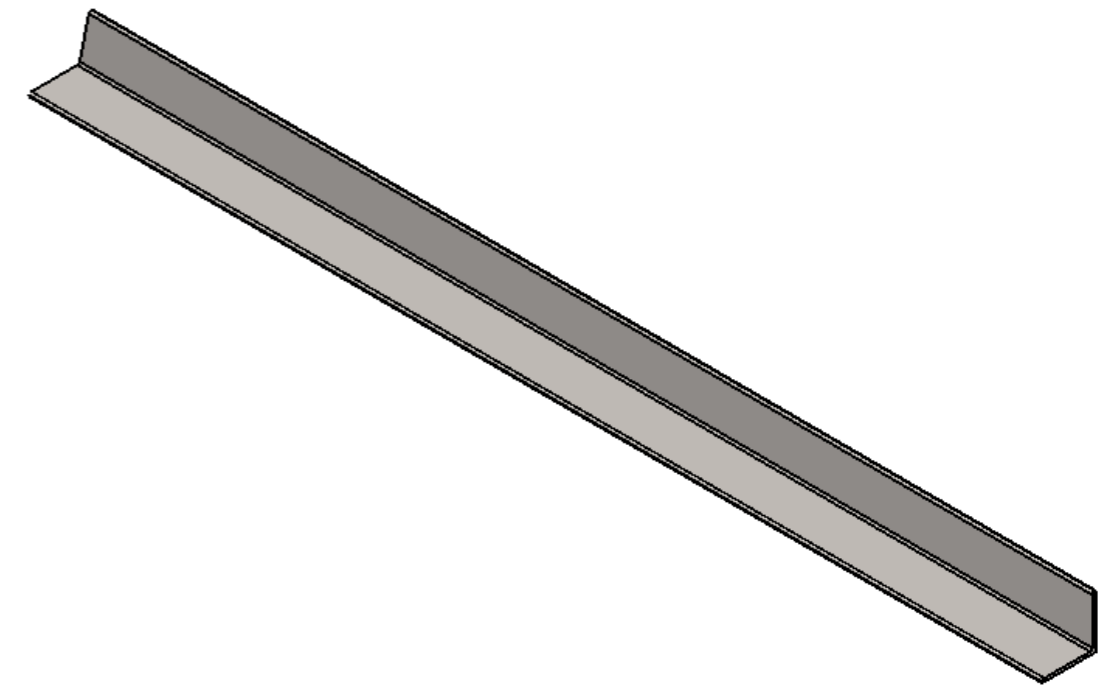
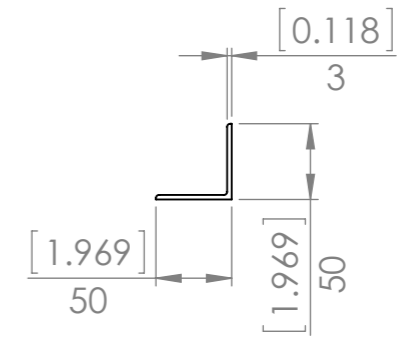
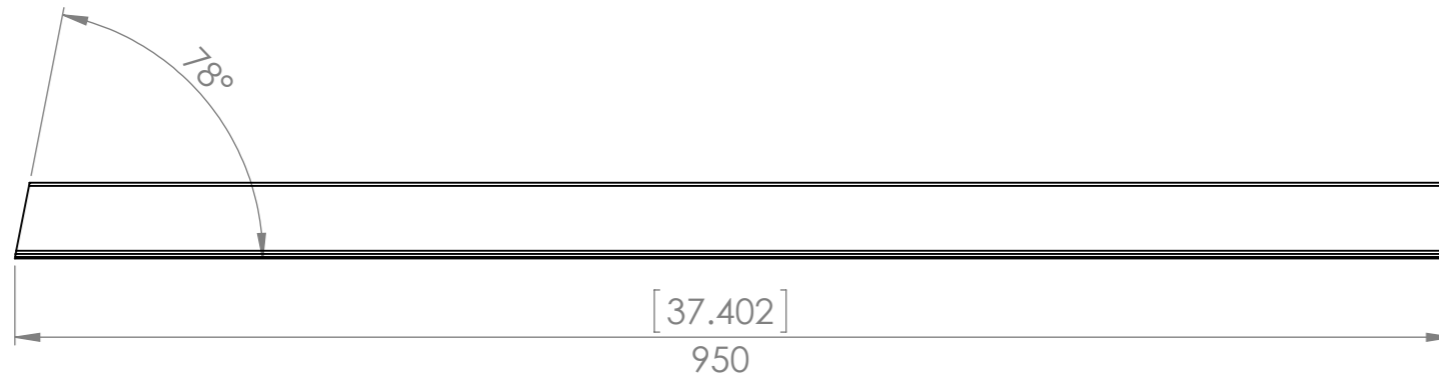



UNLESS OTHERWISE SPECIFIED: DIMENSIONS ARE IN MILLIMETERS		FINISH: Painted		DEBUR AND BREAK SHARP EDGES		DO NOT SCALE DRAWING		REVISION A		
TOLERANCES: LINEAR: +/- 1mm ANGULAR: +/- 1degree						TITLE: <b>Designed 2 Build</b>  <b>Vertical Short 1</b>				
DRAWN	NAME Merlin	DATE 2017-01-12								
Q.A	NAME Merlin	DATE 2017-01-30								
		MATERIAL: Plain Carbon Steel		DWG NO. p0070-008		A3				
		WEIGHT: 1927.50		SCALE: 1:5		SHEET 8 OF 30				

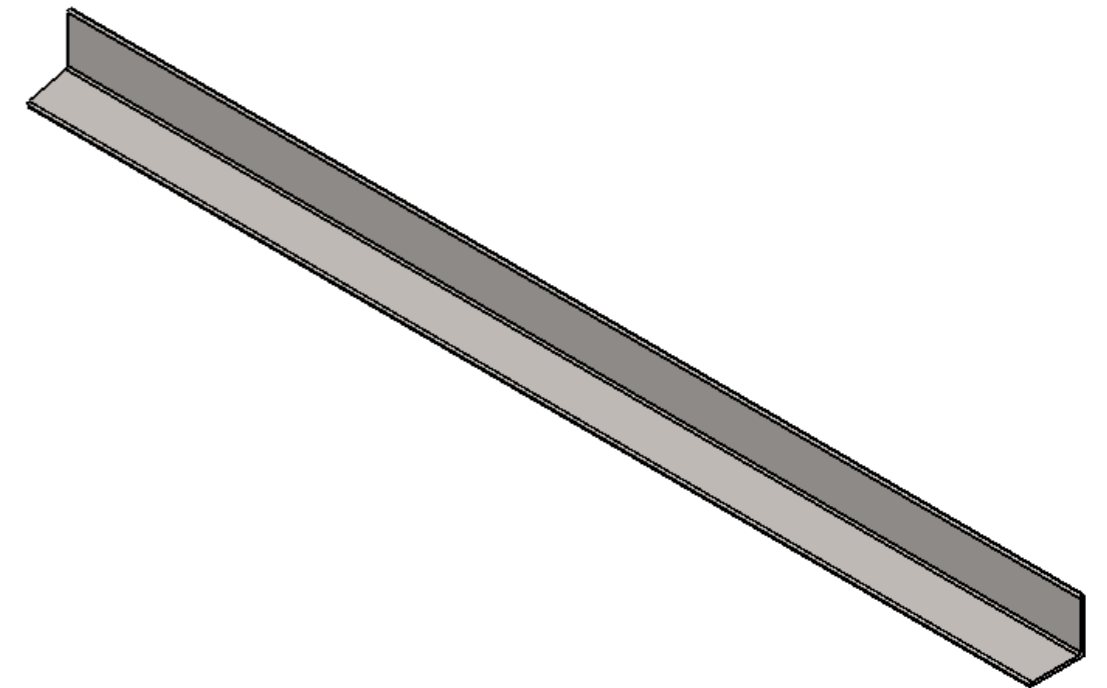
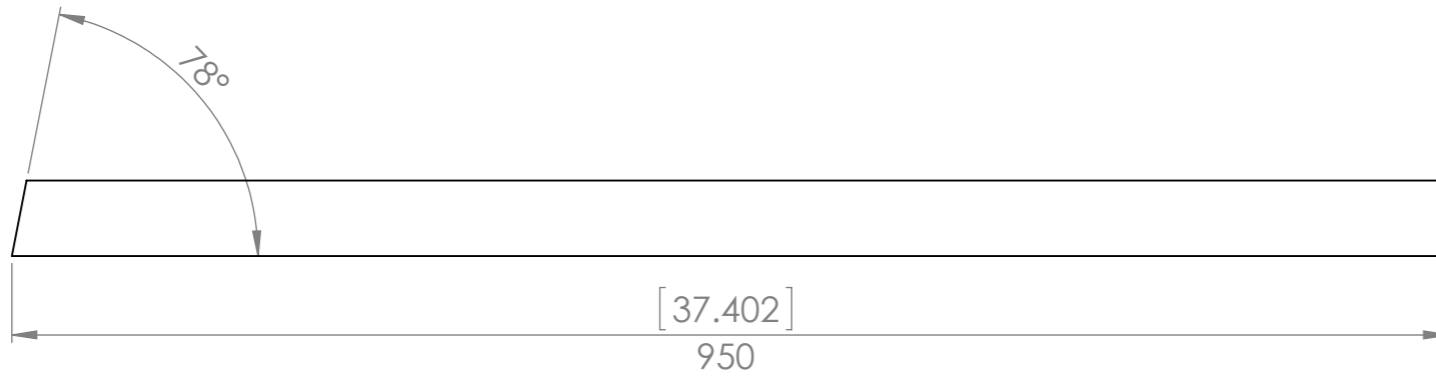
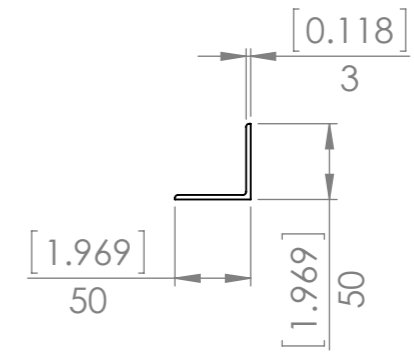





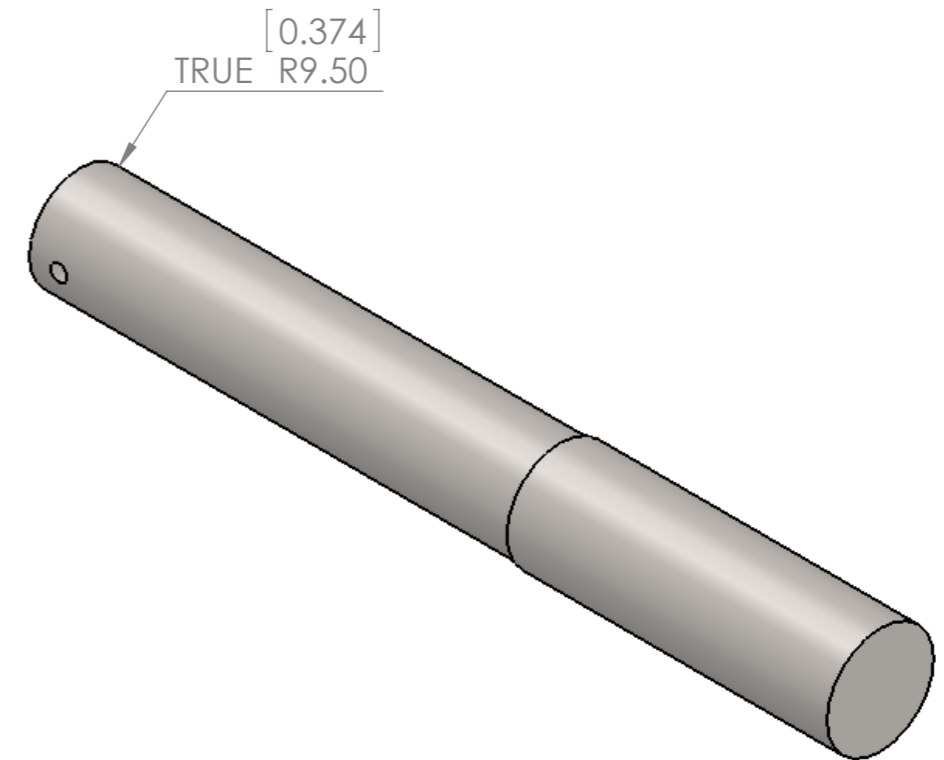
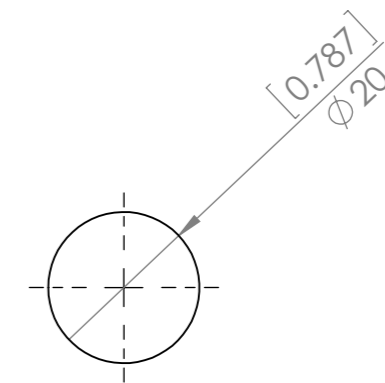
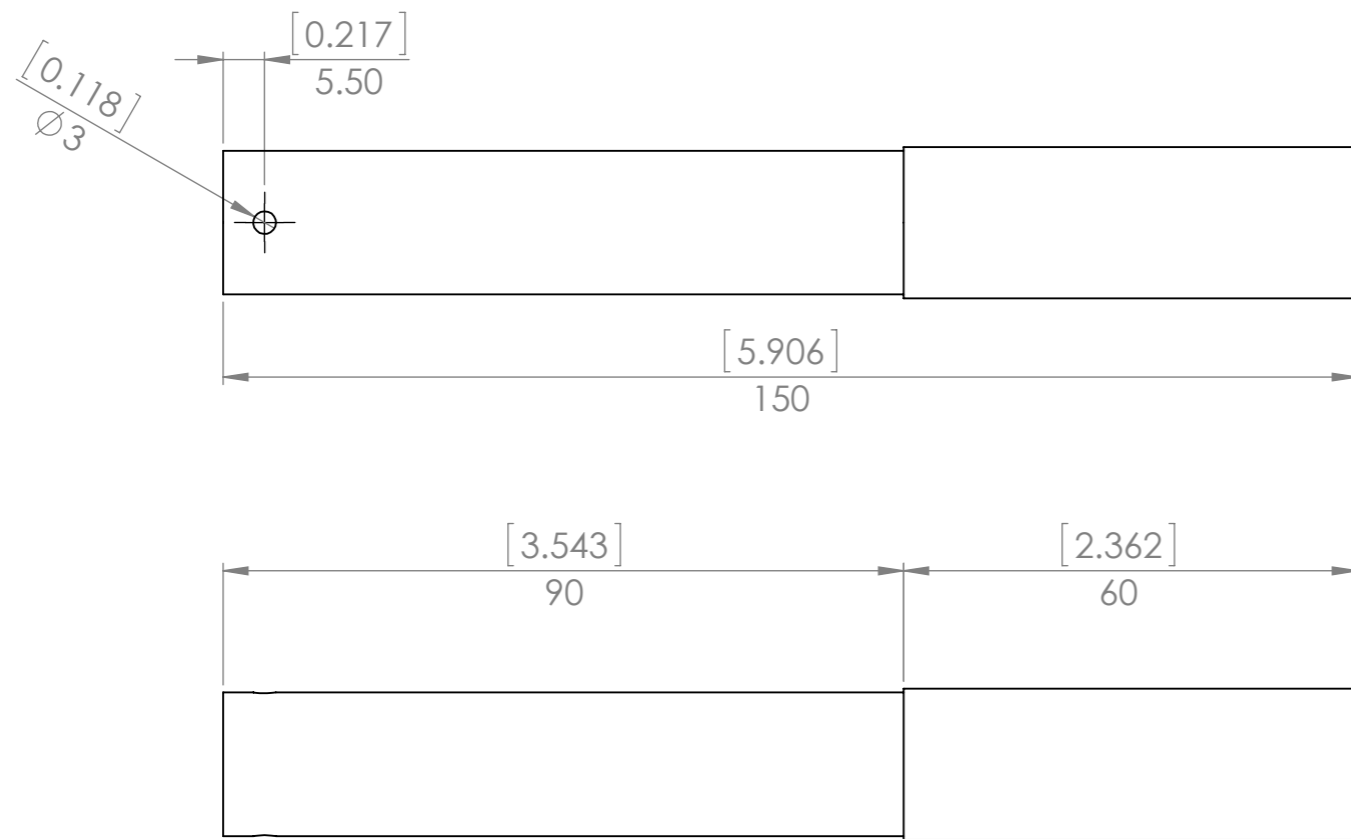
UNLESS OTHERWISE SPECIFIED: DIMENSIONS ARE IN MILLIMETERS		FINISH: <b>Painted</b>		DEBUR AND BREAK SHARP EDGES		DO NOT SCALE DRAWING		REVISION A	
TOLERANCES: LINEAR: +/- 1mm ANGULAR: +/- 1degree						<b>Designed 2 Build</b>  <b>Vertical Short 2</b>			
	NAME	DATE							
DRAWN	Merlin	2017-01-12				DWG NO.		A3	
Q.A	Merlin	2017-01-30				p0070-009			
		MATERIAL:		Plain Carbon Steel		SCALE:1:5		SHEET 9 OF 30	
		WEIGHT: 1927.50							



UNLESS OTHERWISE SPECIFIED: DIMENSIONS ARE IN MILLIMETERS		FINISH: Painted		DEBUR AND BREAK SHARP EDGES		DO NOT SCALE DRAWING		REVISION A	
TOLERANCES: LINEAR: +/- 1mm ANGULAR: +/- 1degree						<b>Designed 2 Build</b>  <b>Vertical Long</b>			
DRAWN	NAME Merlin	DATE 2017-01-12							
Q.A	NAME Merlin	DATE 2017-01-30				DWG NO.		A3	
		MATERIAL: Plain Carbon Steel		WEIGHT: 2143.95		SCALE: 1:5		SHEET 10 OF 30	




UNLESS OTHERWISE SPECIFIED: DIMENSIONS ARE IN MILLIMETERS		FINISH: Painted		DEBUR AND BREAK SHARP EDGES		DO NOT SCALE DRAWING		REVISION A	
TOLERANCES: LINEAR: +/- 1mm ANGULAR: +/- 1degree						<b>Designed 2 Build</b>  <b>Vertical Long 2</b>			
DRAWN	NAME Merlin	DATE 2017-01-12							
Q.A	NAME Merlin	DATE 2017-01-30				DWG NO.		p0070-011	
		MATERIAL: Plain Carbon Steel		WEIGHT: 2143.95		SCALE:1:5		SHEET 11 OF 30	
								A3	

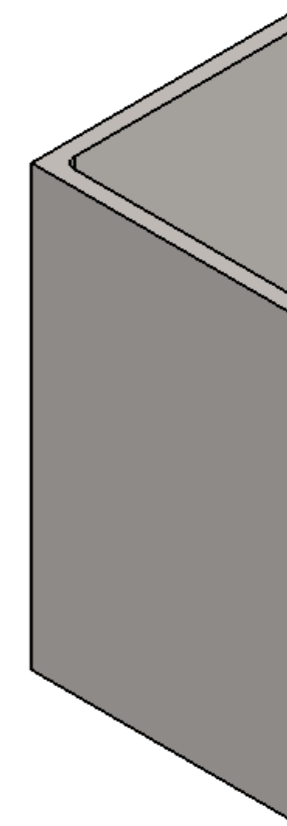
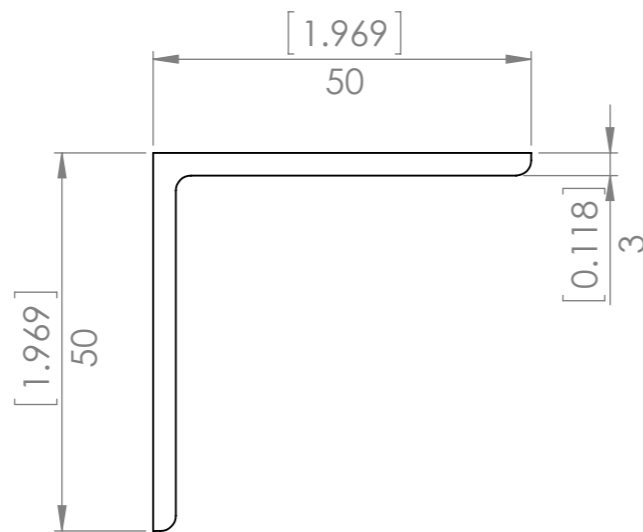
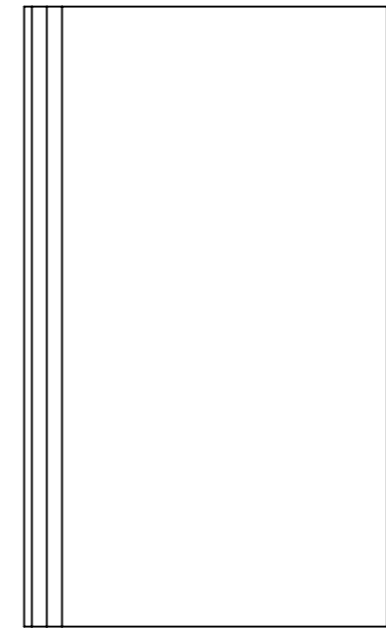
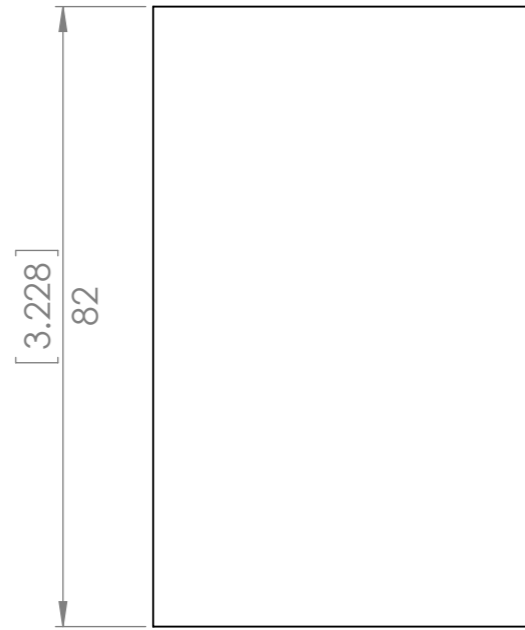



The axel stock which I had available for the build was 20mm but the wheels I bought took a 3/4" (19mm) axel so I turned it down to suit.

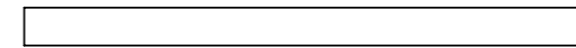
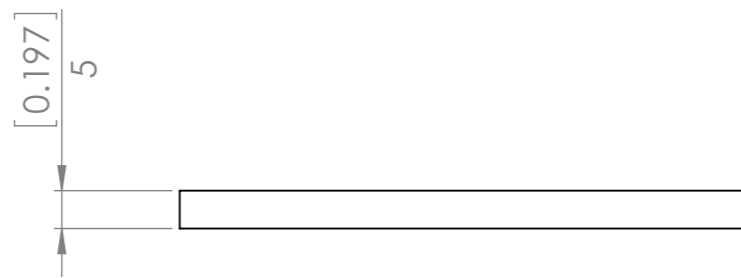
No need to do anything fancy if you are lucky enough to have matching sizes on hand, just adjust the size of the holes you drill for the axels accordingly.

Polish the end the wheel fits on.

UNLESS OTHERWISE SPECIFIED: DIMENSIONS ARE IN MILLIMETERS		FINISH: Painted/Polished	DEBUR AND BREAK SHARP EDGES	DO NOT SCALE DRAWING	REVISION A
TOLERANCES: LINEAR: +/- 1mm ANGULAR: +/- 1degree		<b>Designed 2 Build</b>  <b>Axel</b>			
DRAWN	Merlin				
Q.A	Merlin	DATE	2017-01-30	TITLE:	
		MATERIAL: Plain Carbon Steel		DWG NO.	p0070-012
WEIGHT: 345.02		SCALE: 1:1		SHEET 12 OF 30	
				A3	

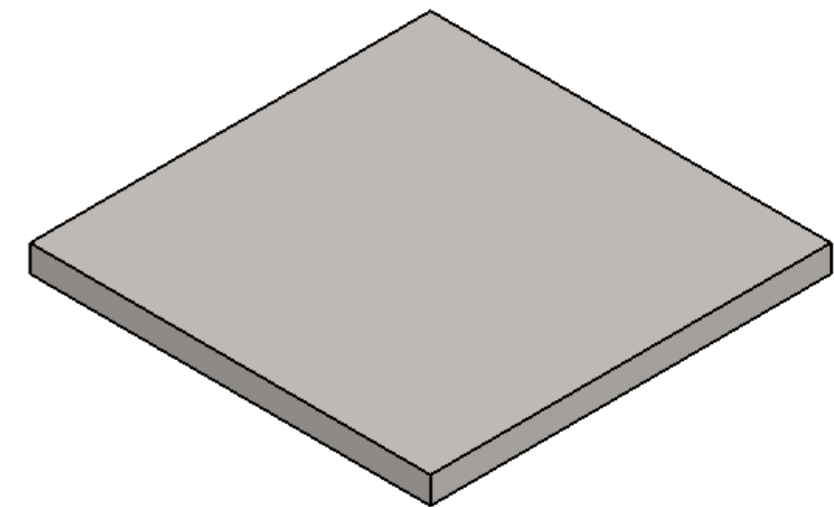
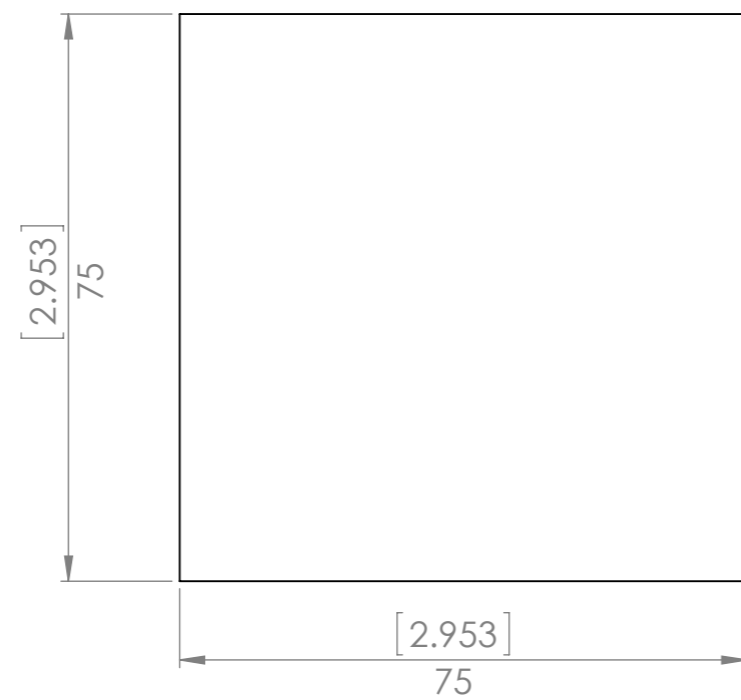



UNLESS OTHERWISE SPECIFIED: DIMENSIONS ARE IN MILLIMETERS		FINISH: <b>Painted</b>		DEBUR AND BREAK SHARP EDGES		DO NOT SCALE DRAWING		REVISION A	
TOLERANCES: LINEAR: +/- 1mm ANGULAR: +/- 1degree						<b>Designed 2 Build</b>			
	NAME	DATE				<b>Leg</b>			
DRAWN	Merlin	2017-01-12							
Q.A	Merlin	2017-01-30							
		MATERIAL:		Plain Carbon Steel		DWG NO.		p0070-013	
		WEIGHT: 185.57		SCALE: 1:1		SHEET 13 OF 30		A3	

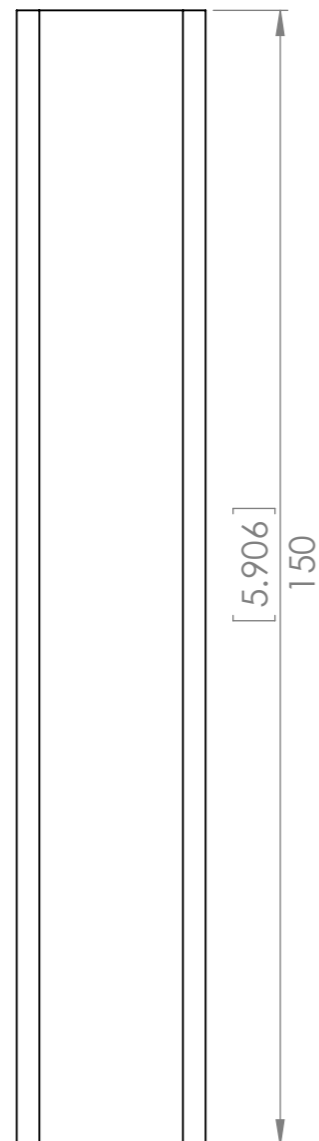
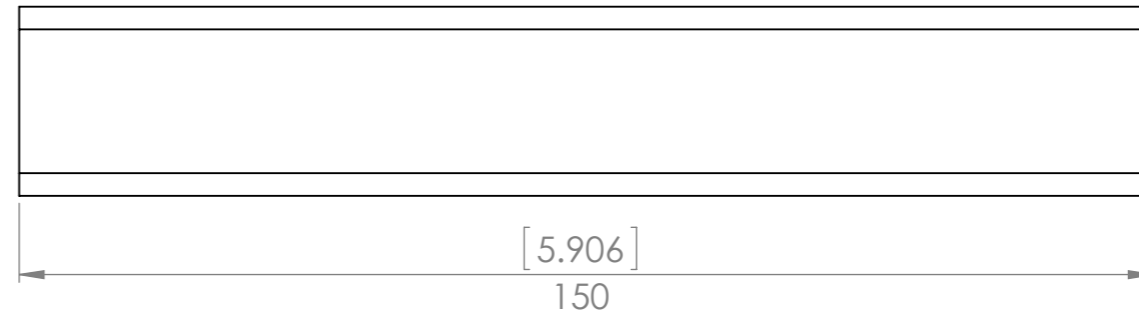
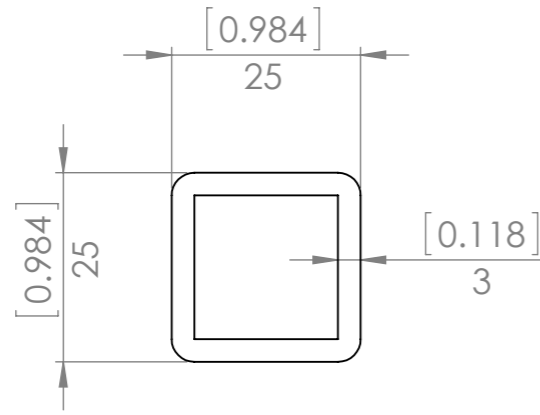


As you will see in the pictures I ended up making the feet triangular on the prototype and a little larger than the angle for the legs.

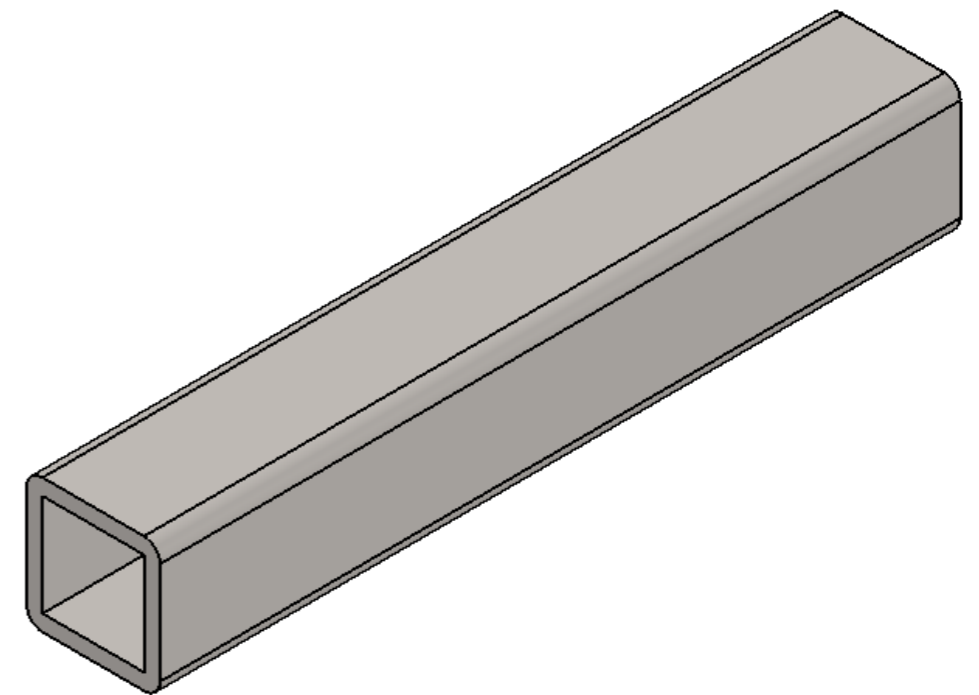
Basically because I had two perfect pieces in the scrap bin.




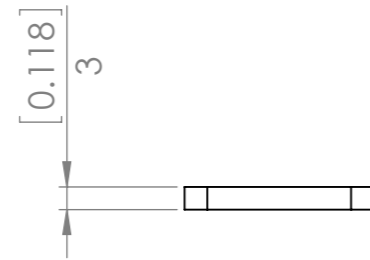
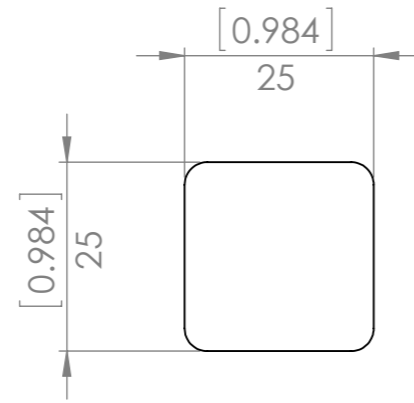
UNLESS OTHERWISE SPECIFIED: DIMENSIONS ARE IN MILLIMETERS		FINISH: Painted		DEBUR AND BREAK SHARP EDGES		DO NOT SCALE DRAWING		REVISION A	
TOLERANCES: LINEAR: +/- 1mm ANGULAR: +/- 1degree						<b>Designed 2 Build</b>			
						TITLE: <b>Foot</b>			
DRAWN Merlin		DATE 2017-01-12				DWG NO. <b>p0070-014</b>		A3	
Q.A Merlin		DATE 2017-01-30				MATERIAL: Plain Carbon Steel		WEIGHT: 219.37	
						SCALE: 1:1		SHEET 14 OF 30	




Use and scrap pipe, SHS or RHS you have around suitable to make a couple of handles from.

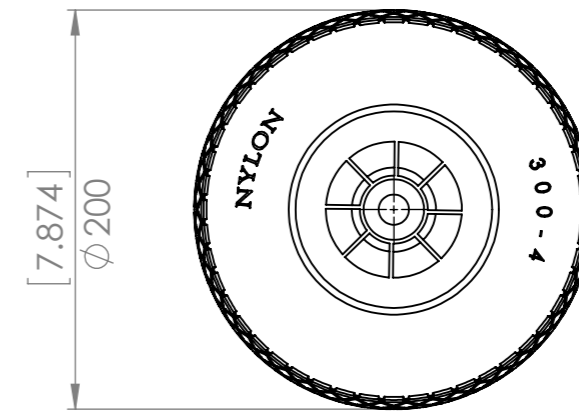
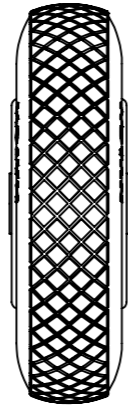


UNLESS OTHERWISE SPECIFIED: DIMENSIONS ARE IN MILLIMETERS		FINISH: Painted	DEBUR AND BREAK SHARP EDGES	DO NOT SCALE DRAWING	REVISION A
TOLERANCES: LINEAR: +/- 1mm ANGULAR: +/- 1degree		<b>Designed 2 Build</b>  <b>Handle</b>			
DRAWN	Merlin				
Q.A	Merlin	DATE	2017-01-30	DWG NO.	p0070-015
		MATERIAL: Plain Carbon Steel		SCALE:1:1	A3
		WEIGHT: 299.84		SHEET 15 OF 30	




UNLESS OTHERWISE SPECIFIED: DIMENSIONS ARE IN MILLIMETERS		FINISH: Painted		DEBUR AND BREAK SHARP EDGES		DO NOT SCALE DRAWING		REVISION A	
TOLERANCES: LINEAR: +/- 1mm ANGULAR: +/- 1degree						TITLE: <b>Design &amp; Build</b> <b>Handle End Cap</b>			
DRAWN	NAME Merlin	DATE 2017-01-12							
Q.A	NAME Merlin	DATE 2017-01-30				DWG NO. p0070-016		A3	
		MATERIAL: Plain Carbon Steel		WEIGHT: 14.44		SCALE: 1:1		SHEET 16 OF 30	

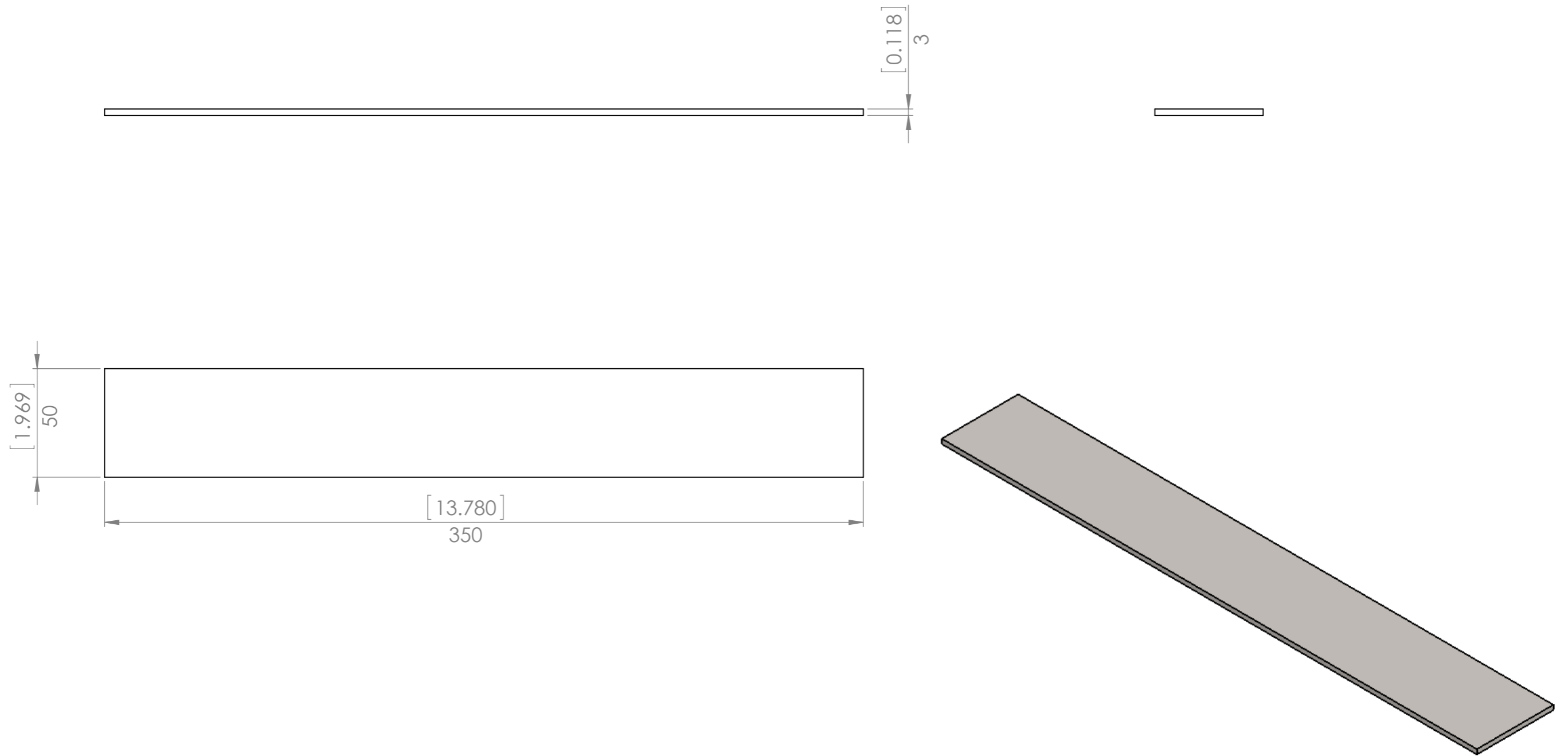





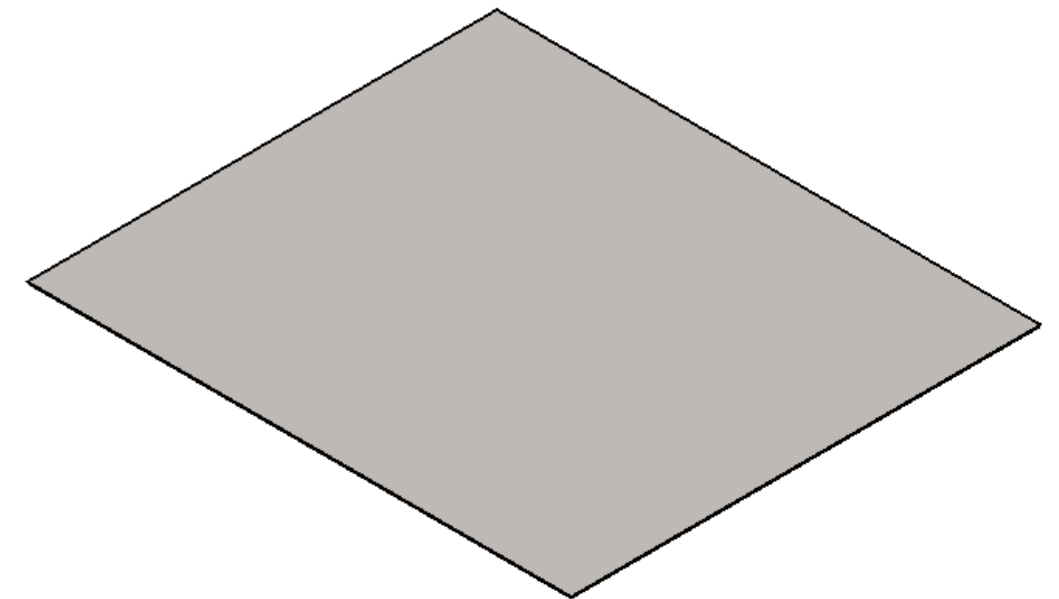
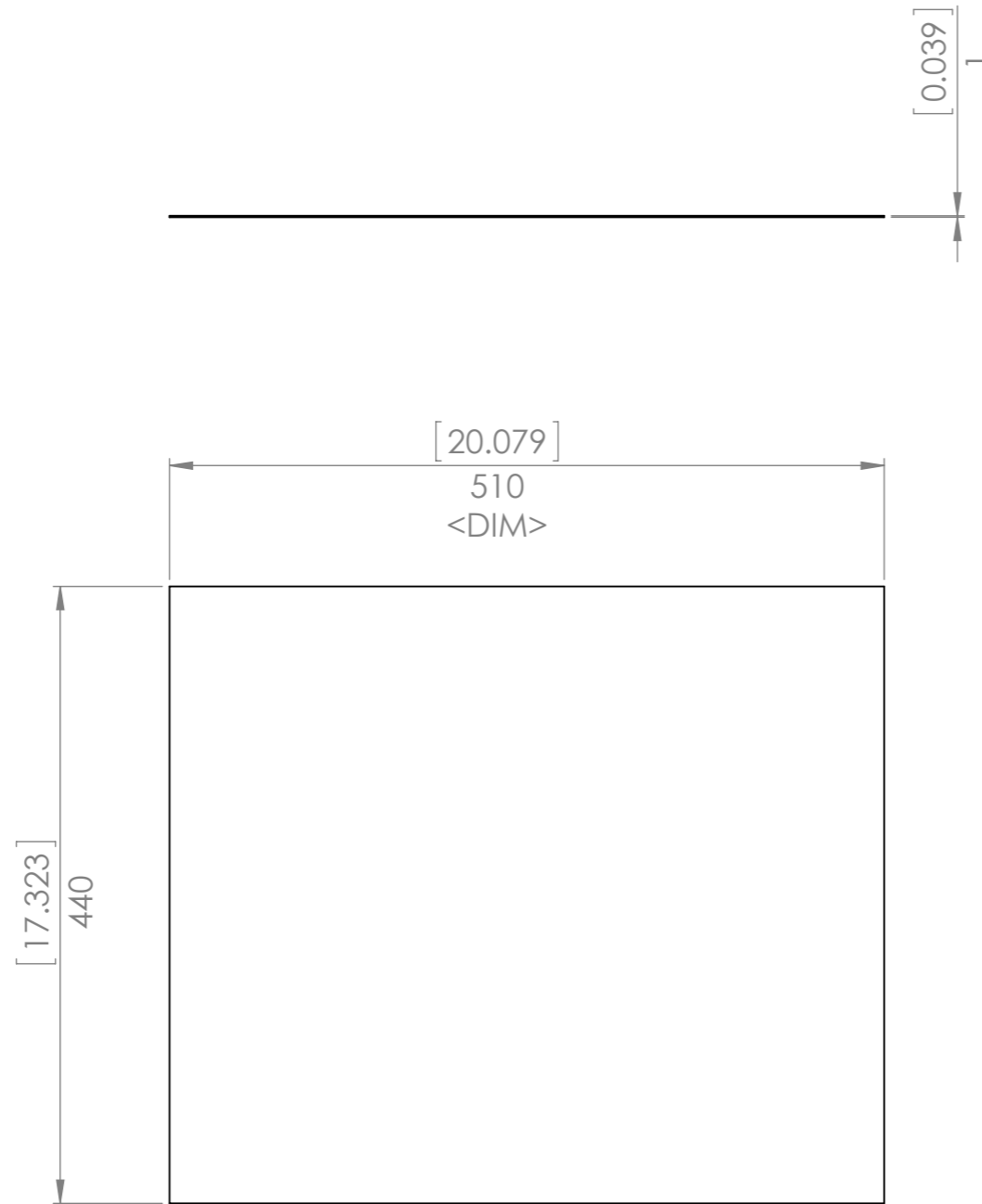
I picked up some solid rubber wheels for the job. Anything around 200mm (8") should be fine.




UNLESS OTHERWISE SPECIFIED: DIMENSIONS ARE IN MILLIMETERS		FINISH: As Received		DEBUR AND BREAK SHARP EDGES		DO NOT SCALE DRAWING		REVISION A	
TOLERANCES: LINEAR: +/- 1mm ANGULAR: +/- 1degree						<b>Designed 2 Build</b>  TITLE: <b>Wheel - 200mm (8 inch)</b>			
DRAWN	n	DATE	-						
Q.A	Merlin	DATE	2017-01-30			DWG NO.		p0070-017	
				MATERIAL:				A3	
				WEIGHT:		SCALE:1:5		SHEET 17 OF 30	

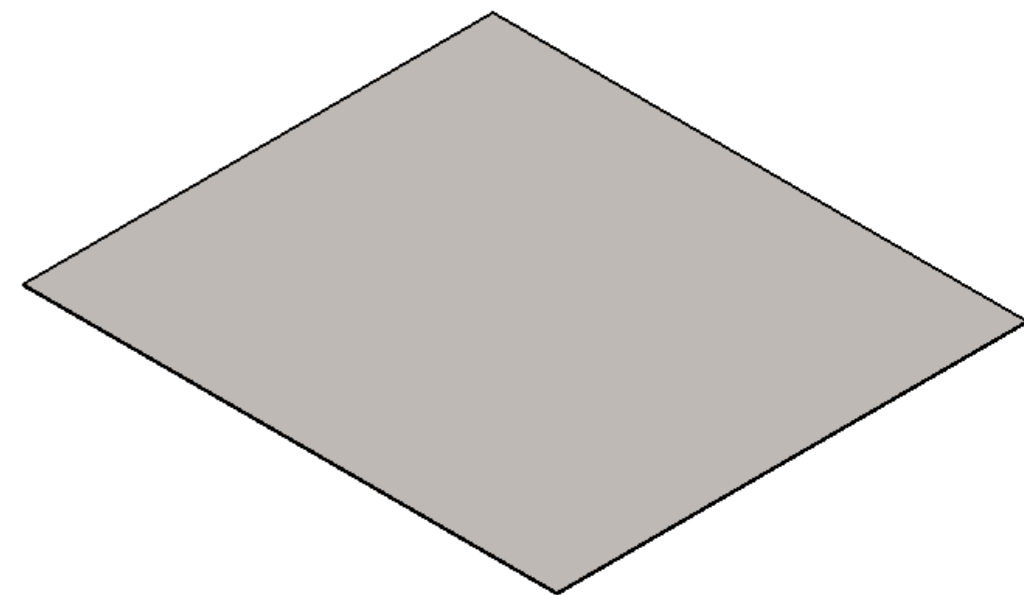
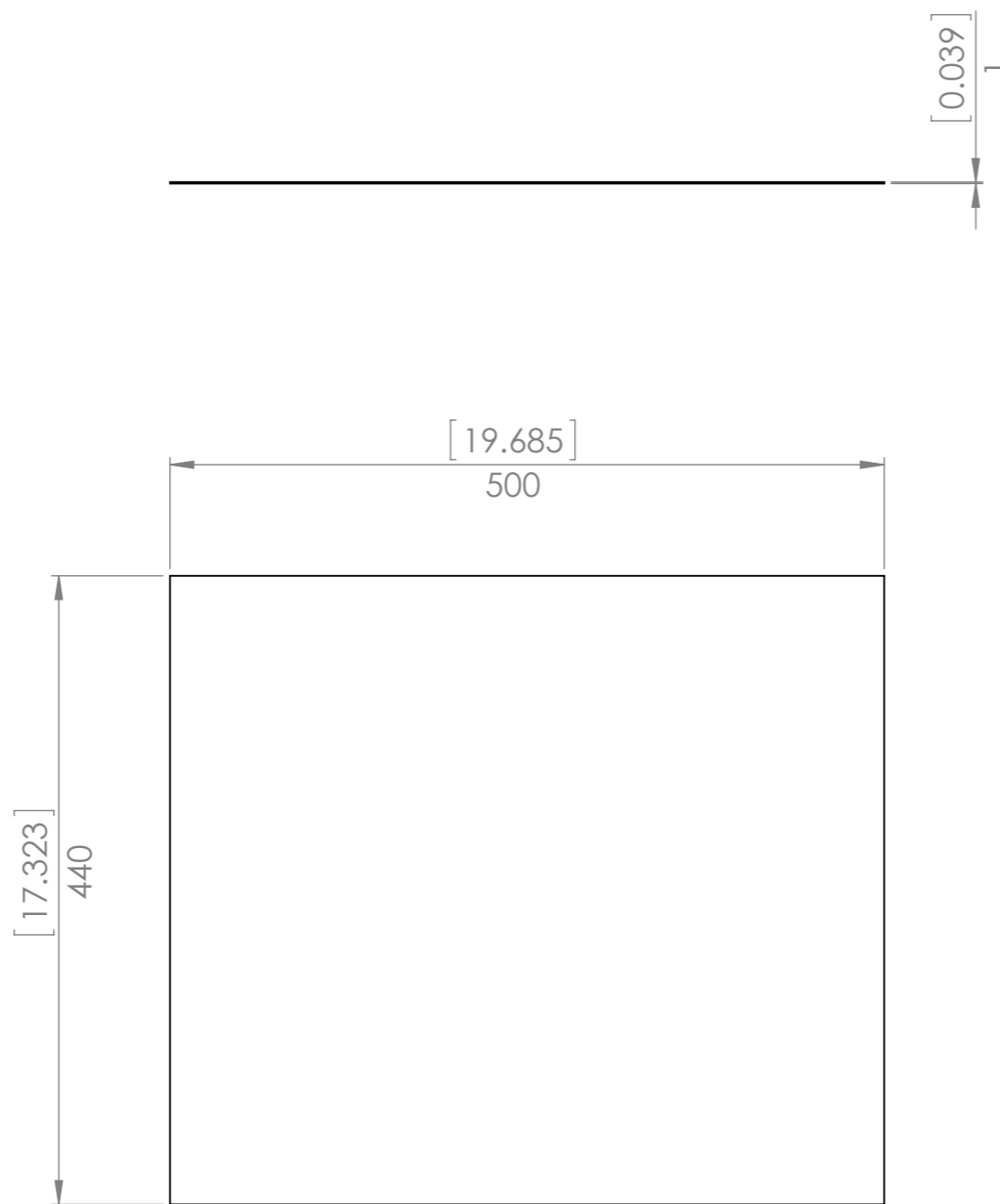


UNLESS OTHERWISE SPECIFIED: DIMENSIONS ARE IN MILLIMETERS		FINISH: Painted		DEBUR AND BREAK SHARP EDGES		DO NOT SCALE DRAWING		REVISION A	
TOLERANCES: LINEAR: +/- 1mm ANGULAR: +/- 1degree						Designed 2 Build			
DRAWN Merlin		DATE 2017-01-29				Floor Support			
Q.A Merlin		2017-01-30							
						MATERIAL: Plain Carbon Steel		DWG NO. p0070-018	
						WEIGHT: 409.50		SCALE: 1:2	
								SHEET 18 OF 30	
								A3	




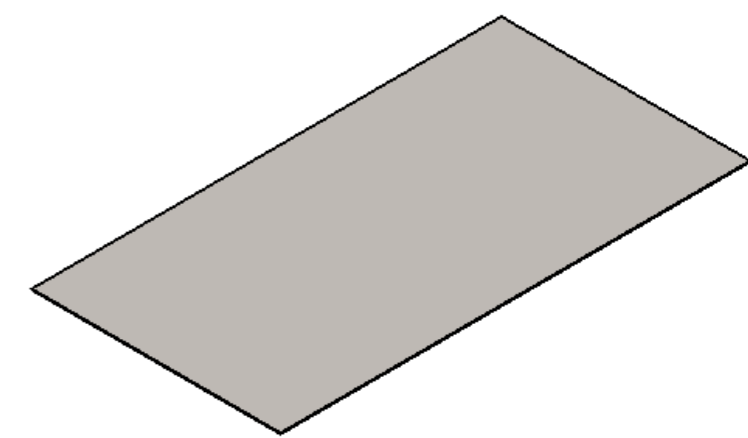
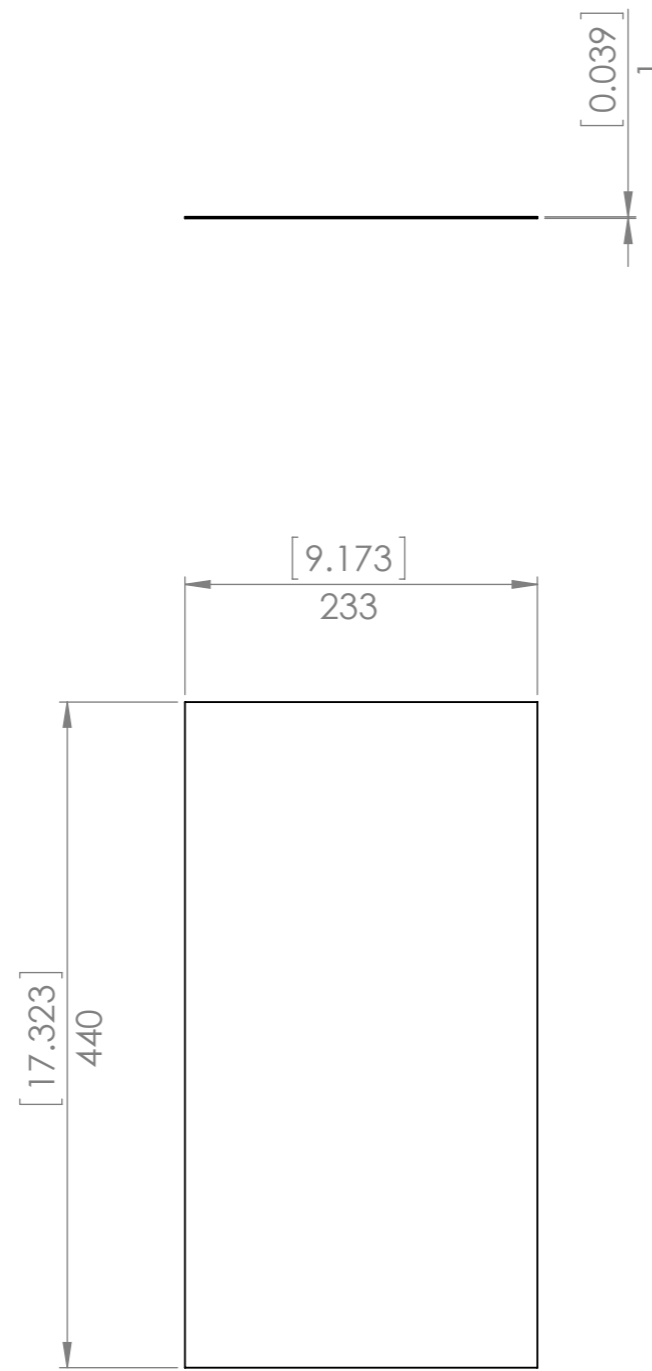
I cut the shelves from the panels off an old washing machine.  
Expanded metal would have been preferable but that's not what I had to hand.

UNLESS OTHERWISE SPECIFIED: DIMENSIONS ARE IN MILLIMETERS		FINISH: Painted		DEBUR AND BREAK SHARP EDGES		DO NOT SCALE DRAWING		REVISION A	
TOLERANCES: LINEAR: +/- 1mm ANGULAR: +/- 1degree						Designed 2 Build			
DRAWN Merlin		DATE 2017-01-29				TITLE: Top Shelf			
Q.A Merlin		DATE 2017-01-30				DWG NO. p0070-019		A3	
				MATERIAL: Plain Carbon Steel		WEIGHT: 1749.32		SCALE:1:5	
						SHEET 19 OF 30			




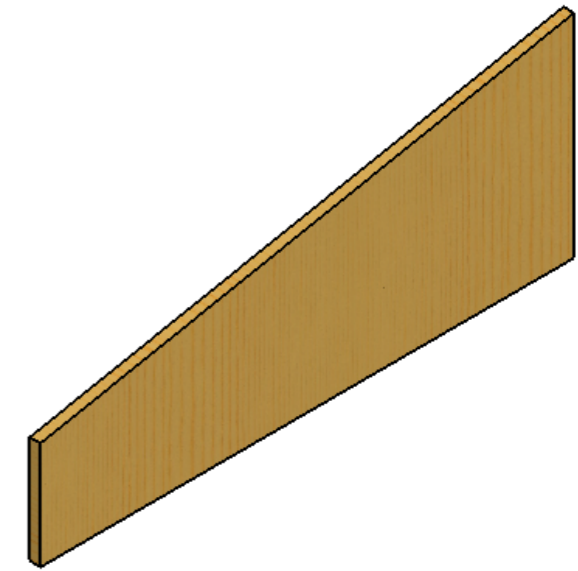
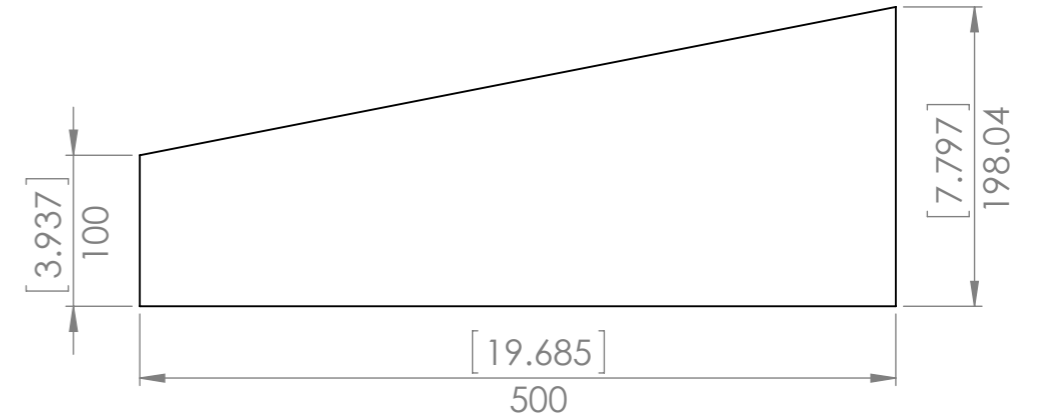
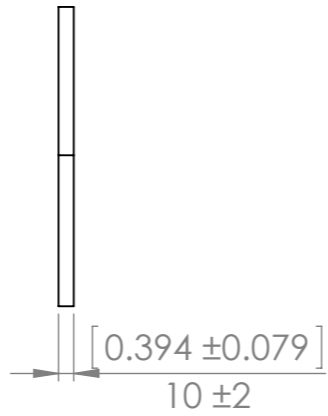
I cut the shelves from the panels off an old washing machine.  
Expanded metal would have been preferable but that's not what I had to hand.

UNLESS OTHERWISE SPECIFIED: DIMENSIONS ARE IN MILLIMETERS		FINISH: Painted		DEBUR AND BREAK SHARP EDGES		DO NOT SCALE DRAWING		REVISION A	
TOLERANCES: LINEAR: +/- 1mm ANGULAR: +/- 1degree						TITLE: <b>Designed 2 Build</b>  <b>Top Shelf</b>			
DRAWN	Merlin	DATE	2017-01-29						
Q.A	Merlin	DATE	2017-01-30			DWG NO. p0070-020		A3	
		MATERIAL: Plain Carbon Steel		WEIGHT: 1716.00		SCALE: 1:5		SHEET 20 OF 30	




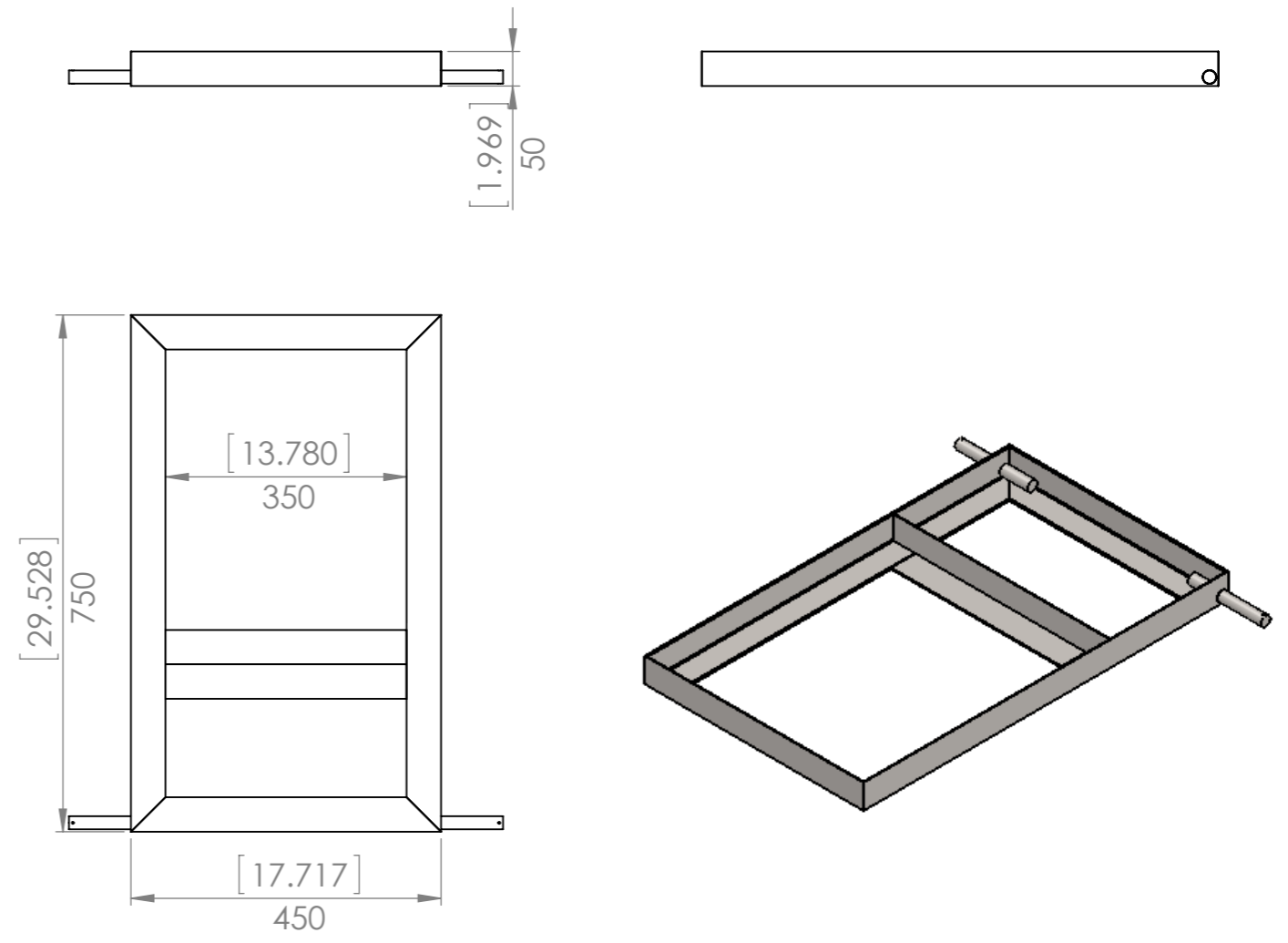
I cut the shelves from the panels off an old washing machine.  
Expanded metal would have been preferable but that's not what I had to hand.

UNLESS OTHERWISE SPECIFIED: DIMENSIONS ARE IN MILLIMETERS		FINISH: Painted		DEBUR AND BREAK SHARP EDGES		DO NOT SCALE DRAWING		REVISION A	
TOLERANCES: LINEAR: +/- 1mm ANGULAR: +/- 1degree						TITLE: <b>Cylinder Floor</b>			
DRAWN	Merlin	DATE	2017-01-29					DWG NO. p0070-021	
Q.A	Merlin	DATE	2017-01-30			MATERIAL: Plain Carbon Steel		SCALE:1:5	
				WEIGHT: 799.66		SHEET 21 OF 30			




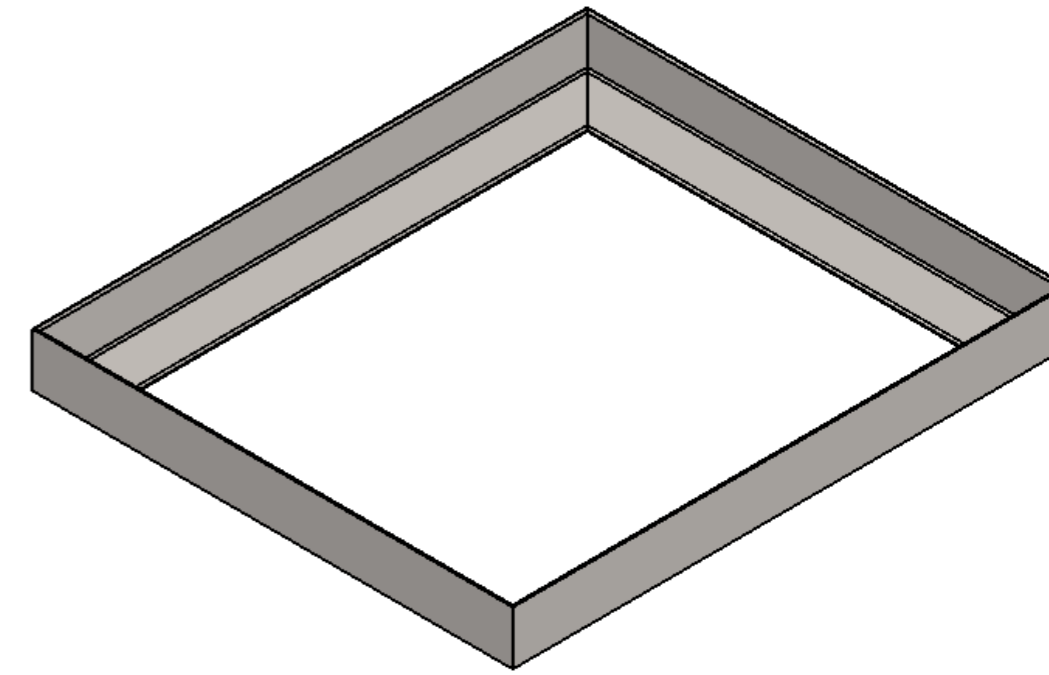
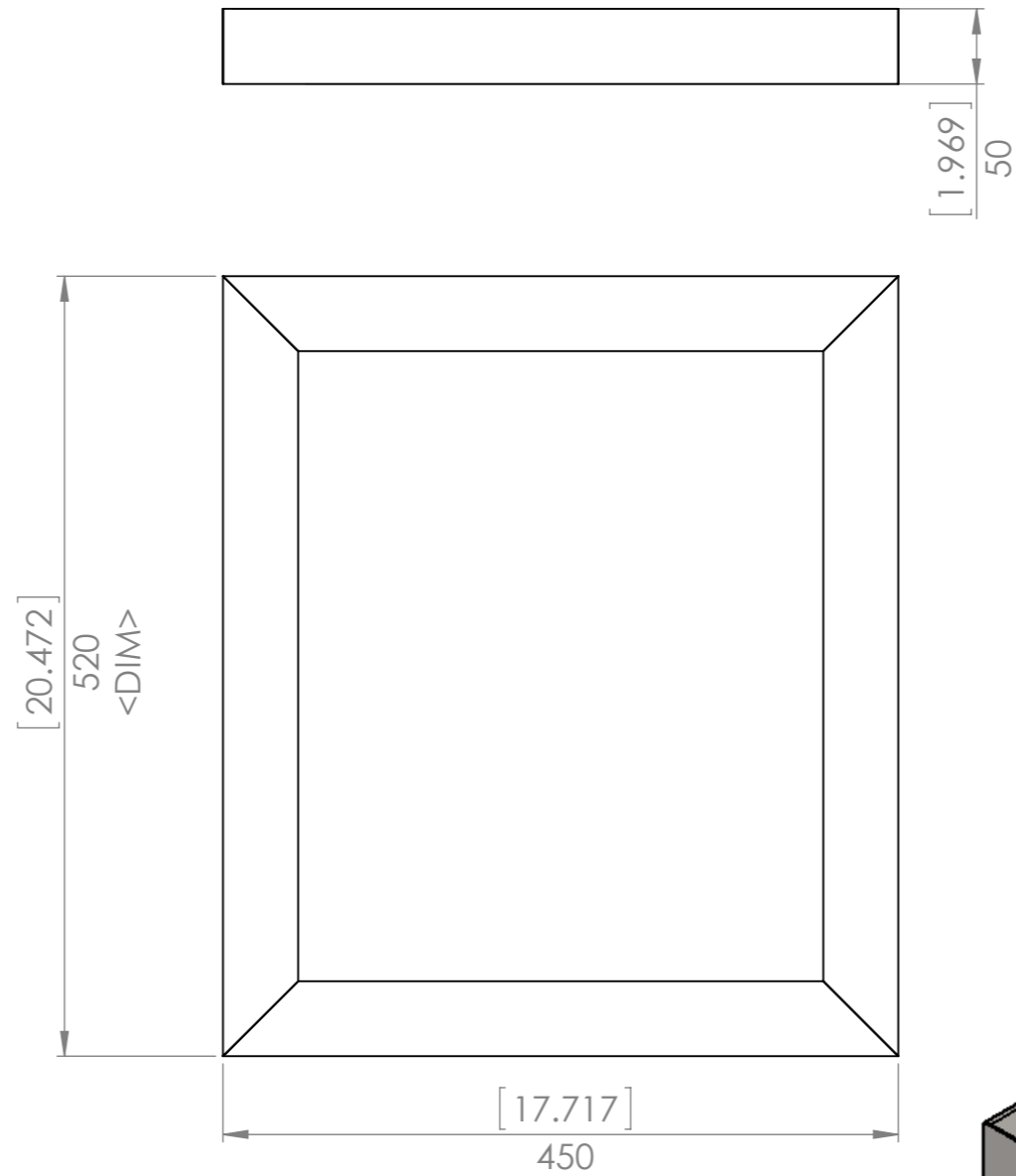
The sole reason for these is to provide somewhere to mount the hose reels I got from the local dollar shop.


UNLESS OTHERWISE SPECIFIED: DIMENSIONS ARE IN MILLIMETERS		FINISH: Painted		DEBUR AND BREAK SHARP EDGES		DO NOT SCALE DRAWING		REVISION A		
TOLERANCES: LINEAR: +/- 1mm ANGULAR: +/- 1degree						Designed 2 Build				
DRAWN Merlin		DATE 2017-01-29				Ply Side				
Q.A Merlin		DATE 2017-01-30								
						MATERIAL: Plywood		DWG NO. p0070-022		A3
						WEIGHT: 253.33		SCALE: 1:5		SHEET 22 OF 30



QTY.	PART NUMBER	DESCRIPTION	MATERIAL	WEIGHT
2	p0070-003	End	Plain Carbon Steel	957.24
1	p0070-001	Bottom Side 1	Plain Carbon Steel	1628.78
1	p0070-002	Bottom Side 2	Plain Carbon Steel	1628.83
1	p0070-004	Cross Member	Plain Carbon Steel	895.47
1	p0070-018	Floor Support	Plain Carbon Steel	409.50
2	p0070-012	Axel	Plain Carbon Steel	345.02

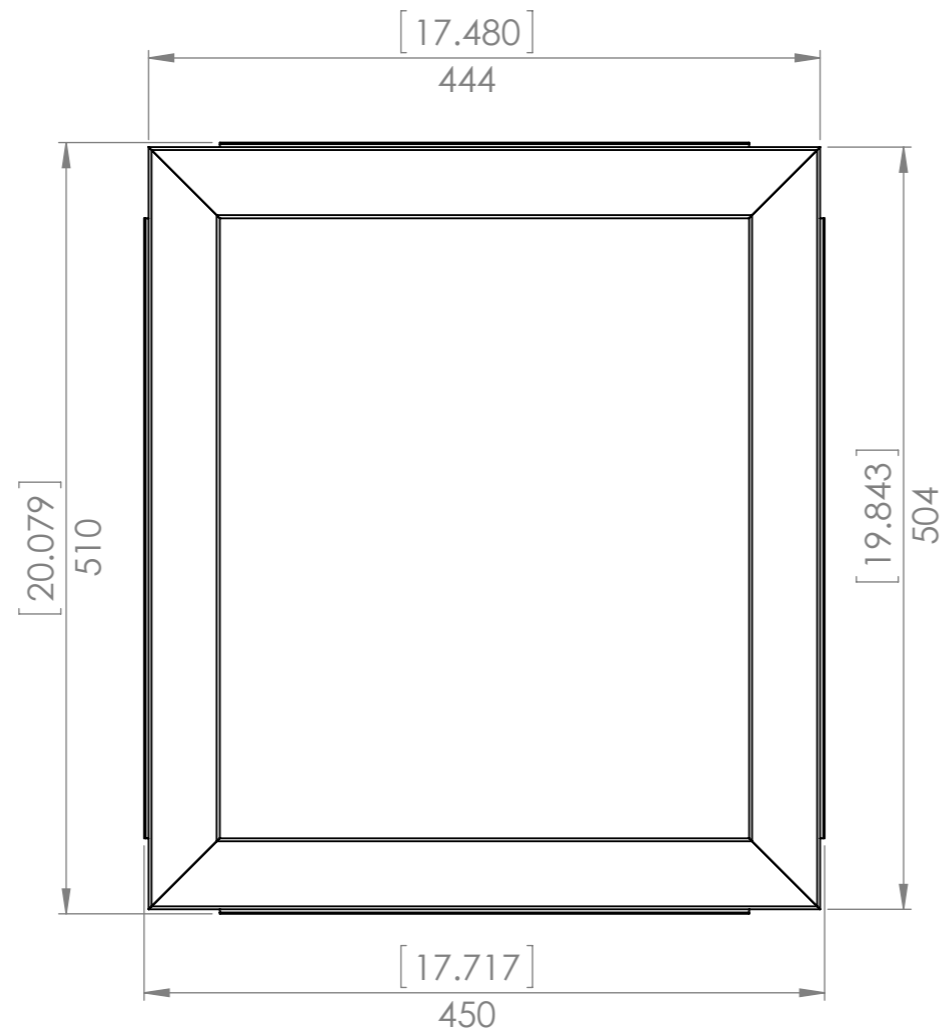
UNLESS OTHERWISE SPECIFIED: DIMENSIONS ARE IN MILLIMETERS		FINISH: <b>Painted</b>	DEBUR AND BREAK SHARP EDGES	DO NOT SCALE DRAWING	REVISION A
TOLERANCES: LINEAR: +/- 1mm ANGULAR: +/- 1degree				<b>Designed 2 Build</b>	
NAME	DATE			<b>Base Frame</b>	
DRAWN Merlin	2017-01-12				
Q.A Merlin	2017-01-30				
		MATERIAL: <b>Assembly</b>	DWG NO. <b>p0070-A01</b>	A3	
		WEIGHT: 7167.08	SCALE: 1:10	SHEET 23 OF 30	



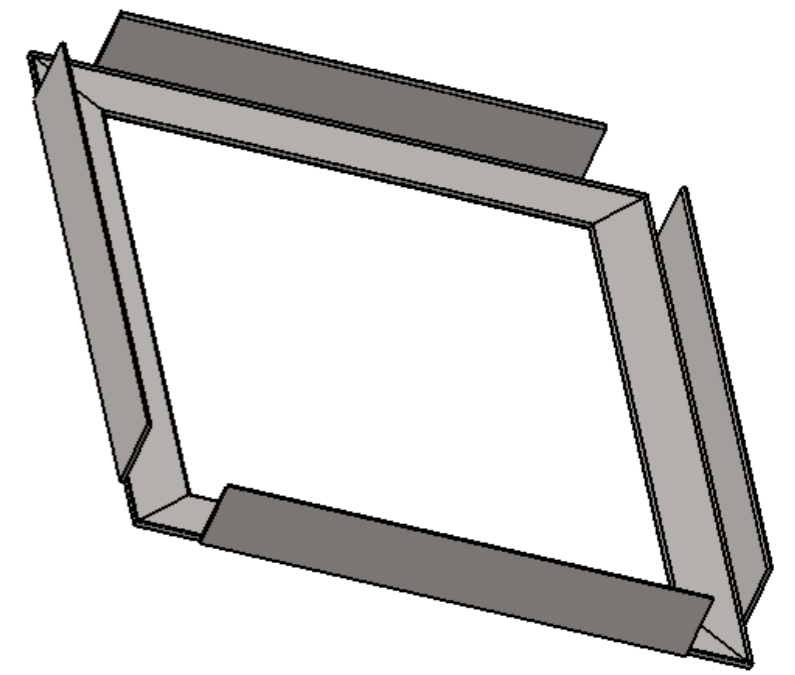
UNLESS OTHERWISE SPECIFIED: DIMENSIONS ARE IN MILLIMETERS		FINISH: Painted		DEBUR AND BREAK SHARP EDGES		DO NOT SCALE DRAWING		REVISION A	
TOLERANCES: LINEAR: +/- 1mm ANGULAR: +/- 1degree						TITLE: <b>Designed 2 Build</b>  <b>Top shelf frame</b>			
NAME	DATE								
DRAWN Merlin	2017-01-12								
Q.A Merlin	2017-01-30								
		MATERIAL: Assembly		DWG NO. p0070-A02		A3			
		WEIGHT: 4144.47		SCALE: 1:5		SHEET 24 OF 30			

QTY.	PART NUMBER	DESCRIPTION	MATERIAL	WEIGHT
2	p0070-003	End	Plain Carbon Steel	957.24
2	p0070-005	Top Side	Plain Carbon Steel	1115.00

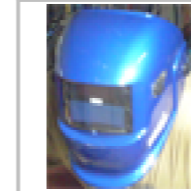




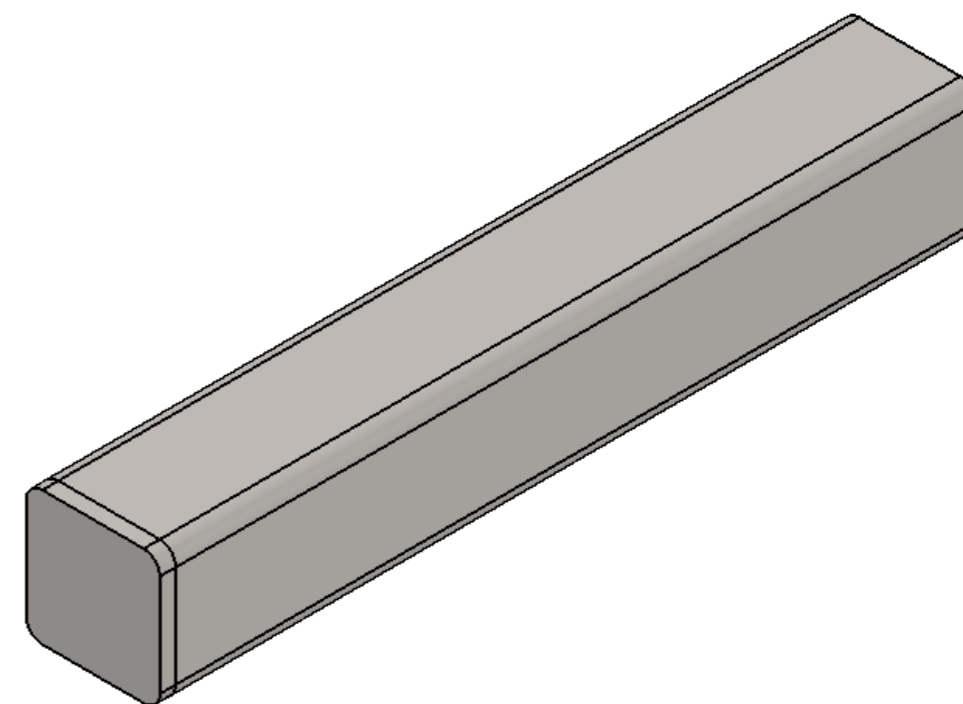
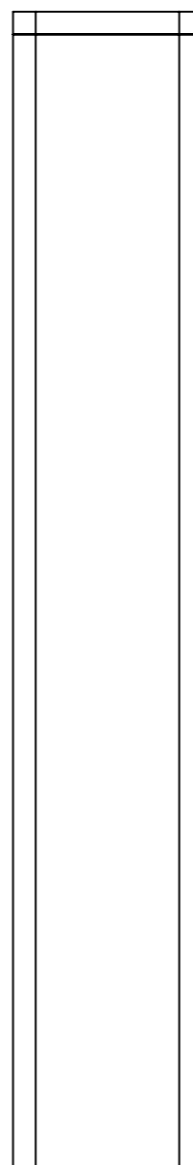
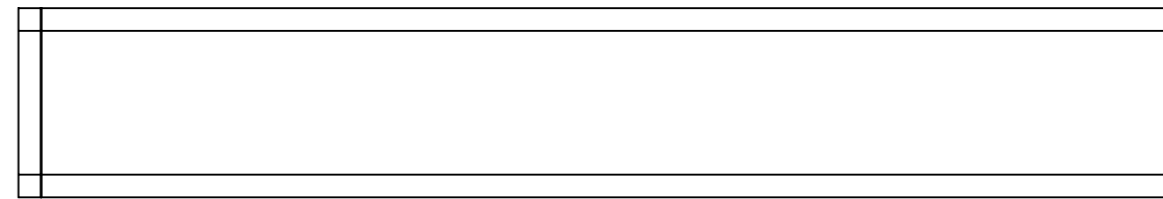
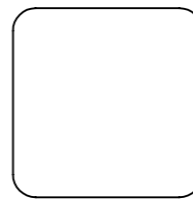
Another part which could be greatly simplified if you want to. I did it this way because, as I have said, part of the reason behind this design is to get welding practice.




UNLESS OTHERWISE SPECIFIED: DIMENSIONS ARE IN MILLIMETERS		FINISH: Painted		DEBUR AND BREAK SHARP EDGES		DO NOT SCALE DRAWING		REVISION A	
TOLERANCES: LINEAR: +/- 1mm ANGULAR: +/- 1degree						TITLE: <b>Designed 2 Build</b> <b>Middle Shelf Frame</b>			
NAME	DATE								
DRAWN Merlin	2017-01-12					DWG NO. p0070-A03		A3	
Q.A Merlin	2017-01-30					SCALE:1:5		SHEET 25 OF 30	
MATERIAL: Assembly		WEIGHT: 3649.16							

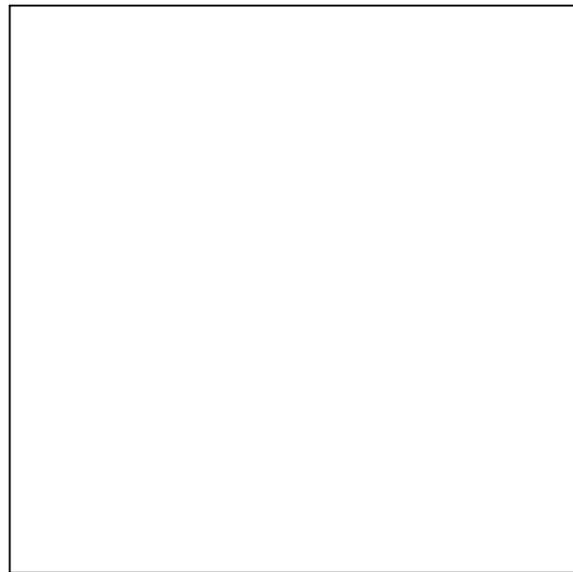
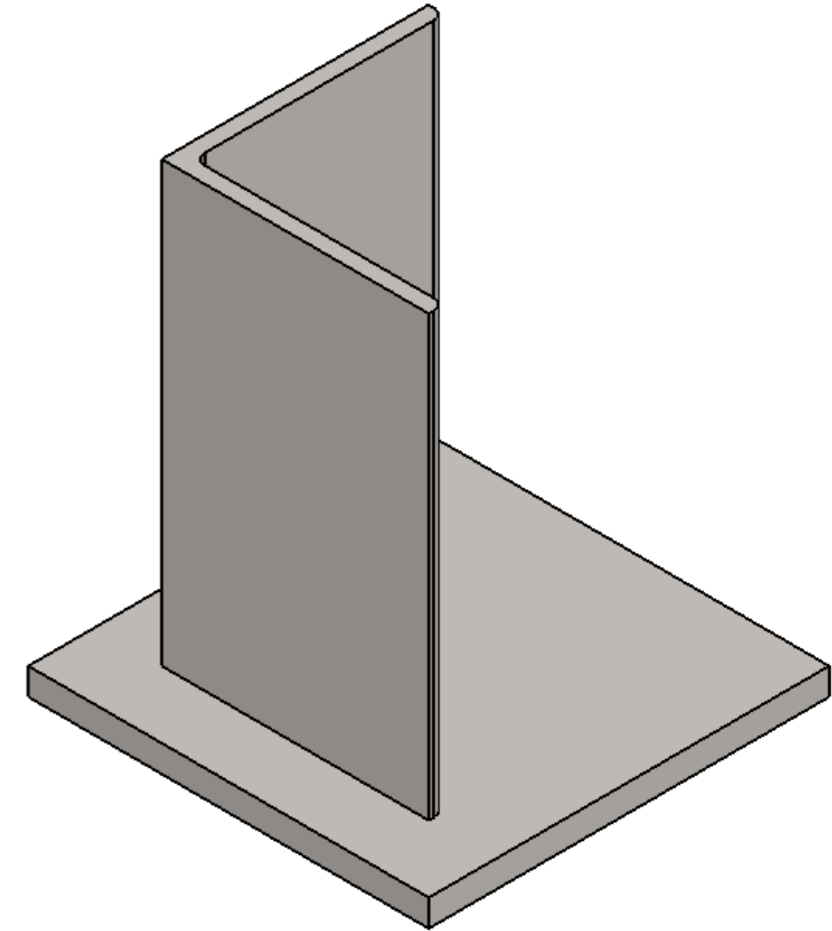
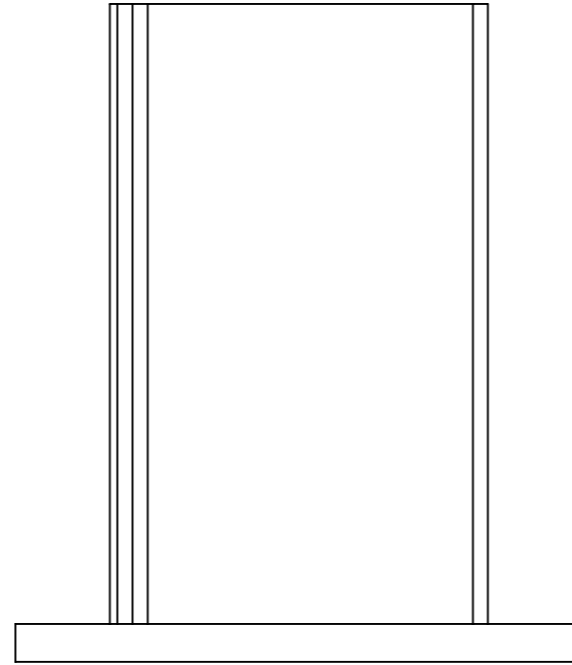
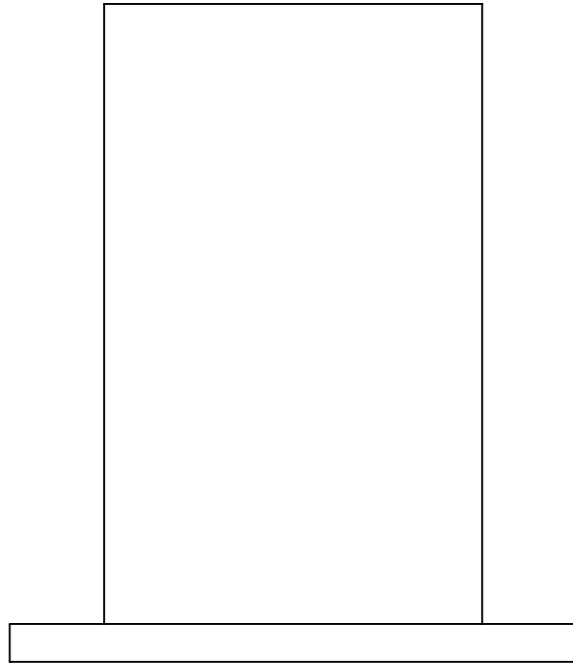


QTY.	PART NUMBER	DESCRIPTION	MATERIAL	WEIGHT
2	p0070-007	Shelf End	Plain Carbon Steel	844.40
2	p0070-006	Shelf Side	Plain Carbon Steel	980.18

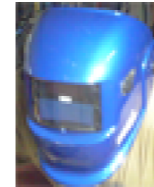


QTY.	PART NUMBER	DESCRIPTION	MATERIAL	WEIGHT
1	p0070-015	Handle	Plain Carbon Steel	299.84
1	p0070-016	Handle End Cap	Plain Carbon Steel	14.44

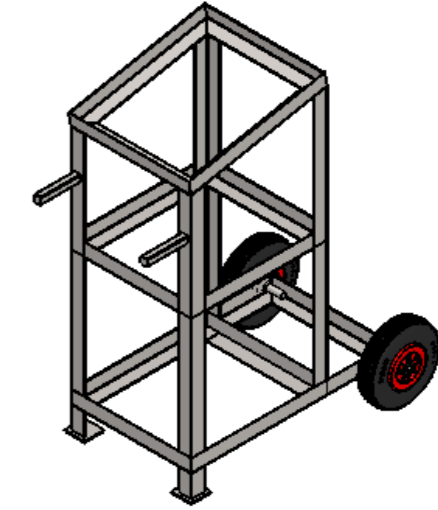
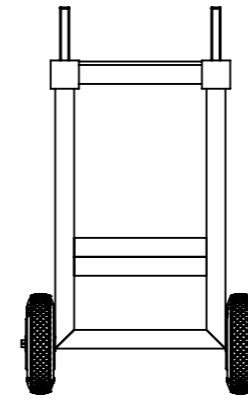
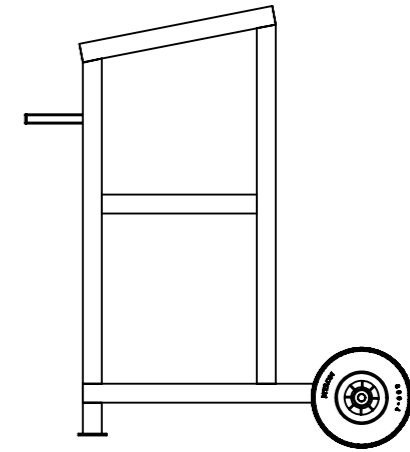
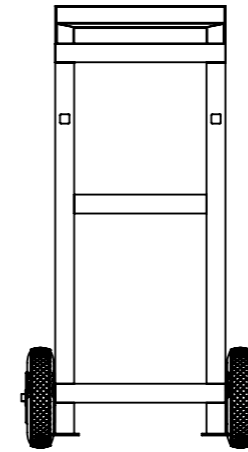
UNLESS OTHERWISE SPECIFIED: DIMENSIONS ARE IN MILLIMETERS		FINISH: <b>Painted</b>	DEBUR AND BREAK SHARP EDGES	DO NOT SCALE DRAWING	REVISION A
TOLERANCES: LINEAR: +/- 1mm ANGULAR: +/- 1degree		<b>Designed 2 Build</b>			
DRAWN Merlin 2017-01-12		DATE nted 2017-01-30		TITLE: <b>Handle</b>	
Q.A Merlin		nted 2017-01-12		DWG NO. <b>p0070-A04</b>	A3
		MATERIAL: <b>Assembly</b>		SCALE:1:1	SHEET 26 OF 30
		WEIGHT: 314.29			




UNLESS OTHERWISE SPECIFIED: DIMENSIONS ARE IN MILLIMETERS		FINISH: Painted		DEBUR AND BREAK SHARP EDGES		DO NOT SCALE DRAWING		REVISION A	
TOLERANCES: LINEAR: +/- 1mm ANGULAR: +/- 1degree						TITLE:  <b>Designed 2 Build</b>  <b>Leg Assem</b>			
		NAME		DATE					
DRAWN		Merlin		2017-01-12					
Q.A		Merlin		2017-01-30					
						MATERIAL: Assembly		DWG NO. p0070-A005	
						WEIGHT: 404.95		SCALE:1:1	
								SHEET 27 OF 30	

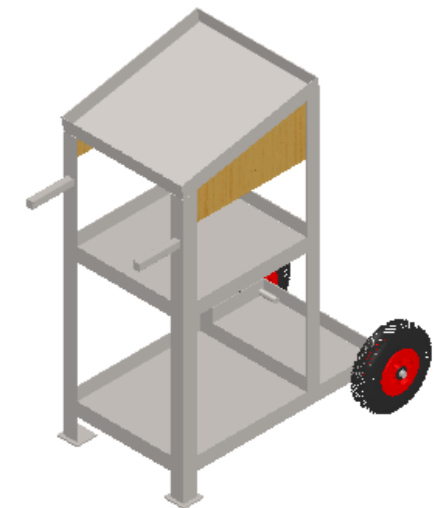
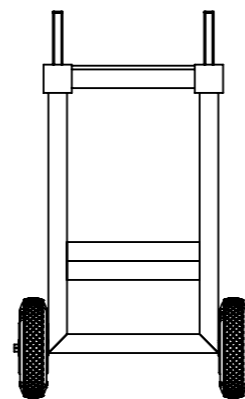
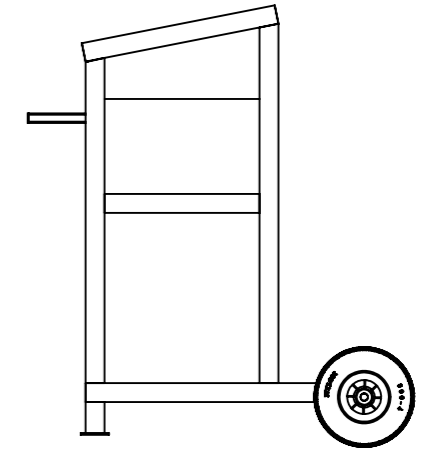
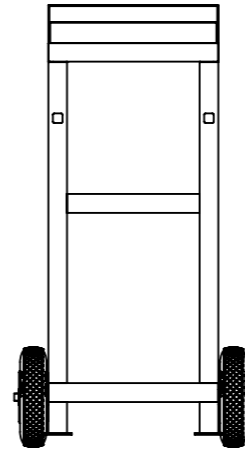


QTY.	PART NUMBER	DESCRIPTION	MATERIAL	WEIGHT
1	p0070-014	Foot	Plain Carbon Steel	219.37
1	p0070-013	Leg	Plain Carbon Steel	185.57




QTY.	PART NUMBER	DESCRIPTION	MATERIAL	WEIGHT
1	p0070-A01	Base Frame	Assembly	7167.08
1	p0070-010	Vertical Long	Plain Carbon Steel	2143.95
1	p0070-011	Vertical Long 2	Plain Carbon Steel	2143.95
1	p0070-008	Vertical Short 1	Plain Carbon Steel	1927.50
1	p0070-009	Vertical Short 2	Plain Carbon Steel	1927.50
1	p0070-A02	Top shelf frame	Assembly	4144.47
1	p0070-A03	Middle Shelf Frame	Assembly	3649.16
2	p0070-A005	Leg Assem	Assembly	404.95
2	p0070-A04	Handle	Assembly	314.29
2		Wheel - 200mm (8 inch)	Assembly	3317.41

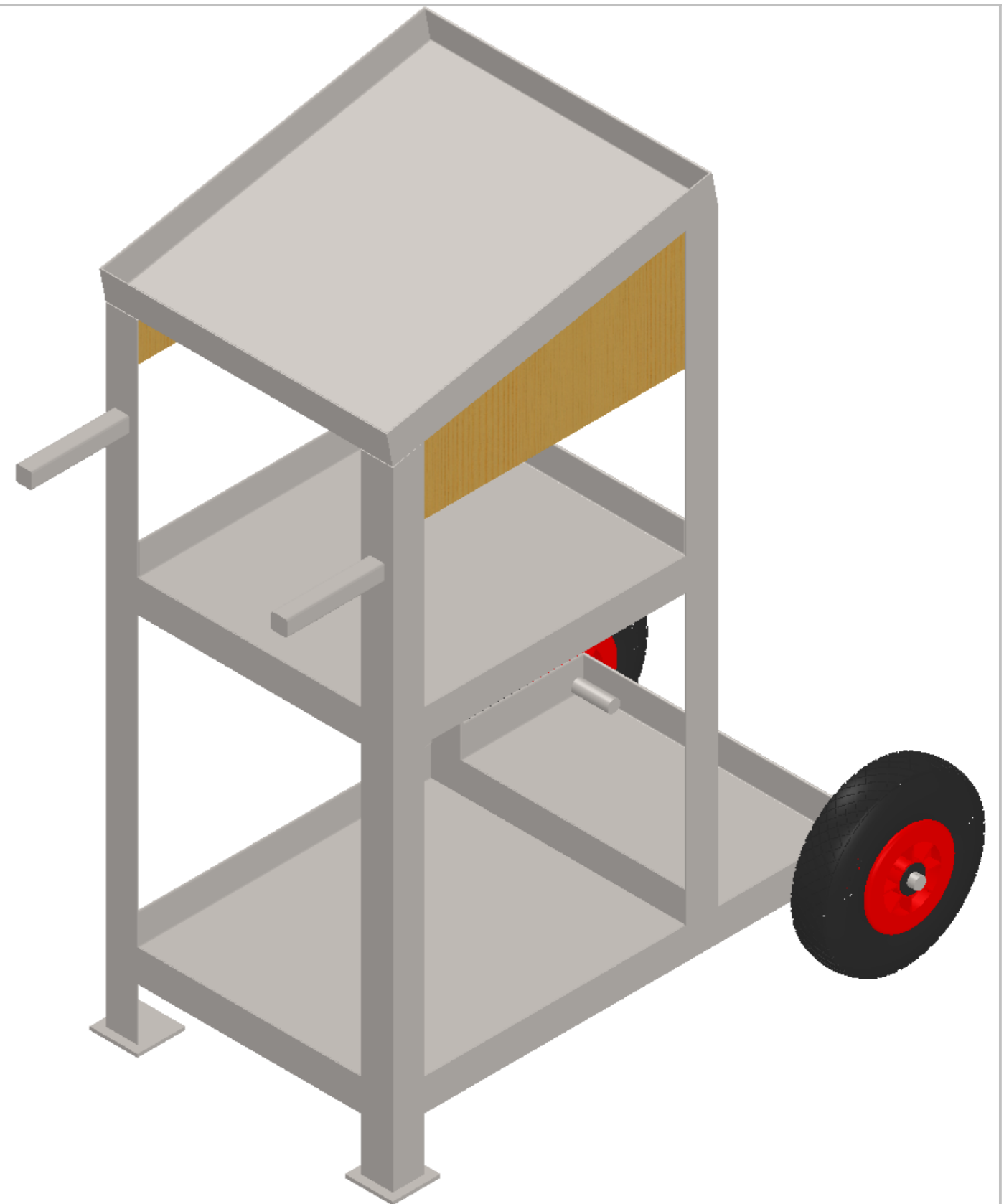
UNLESS OTHERWISE SPECIFIED: DIMENSIONS ARE IN MILLIMETERS		FINISH: <b>Painted</b>	DEBUR AND BREAK SHARP EDGES	DO NOT SCALE DRAWING	REVISION A
TOLERANCES: LINEAR: +/- 1mm ANGULAR: +/- 1degree				<b>Designed 2 Build</b>	
DRAWN Merlin		DATE 2017-01-14		TITLE: <b>Frame Assembly</b>	
Q.A Merlin		DATE 2017-01-30			
		MATERIAL: Assembly		DWG NO. <b>p0070-A006</b>	A3
		WEIGHT: 31176.92		SCALE:1:20	SHEET 28 OF 30



QTY.	PART NUMBER	DESCRIPTION	MATERIAL	WEIGHT
1	p0070-A006	Frame Assembly	Assembly	31176.92
2	p0070-022	Ply Side	Plywood	253.33
1	p0070-019	Top Shelf	Plain Carbon Steel	1749.32
2	p0070-020	Top Shelf	Plain Carbon Steel	1716.00
1	p0070-021	Cylinder Floor	Plain Carbon Steel	799.66

UNLESS OTHERWISE SPECIFIED: DIMENSIONS ARE IN MILLIMETERS		FINISH: Painted		DEBUR AND BREAK SHARP EDGES		DO NOT SCALE DRAWING		REVISION A	
TOLERANCES: LINEAR: +/- 1mm ANGULAR: +/- 1degree						TITLE:  <b>Designed 2 Build</b>  <b>Welding Cart</b>			
DRAWN	NAME Merlin	DATE 2017-01-18							
Q.A	NAME Merlin	DATE 2017-01-30							
		MATERIAL: Assembly		DWG NO. p0070-A07		A3			
		WEIGHT: 37664.57		SCALE:1:20		SHEET 29 OF 30			

QTY.	PART NUMBER	DESCRIPTION	MATERIAL	WEIGHT
4	p0070-003	End	Plain Carbon Steel	957.24
1	p0070-001	Bottom Side 1	Plain Carbon Steel	1628.78
1	p0070-002	Bottom Side 2	Plain Carbon Steel	1628.83
1	p0070-004	Cross Member	Plain Carbon Steel	895.47
1	p0070-018	Floor Support	Plain Carbon Steel	409.50
2	p0070-012	Axel	Plain Carbon Steel	345.02
1	p0070-010	Vertical Long	Plain Carbon Steel	2143.95
1	p0070-011	Vertical Long 2	Plain Carbon Steel	2143.95
1	p0070-008	Vertical Short 1	Plain Carbon Steel	1927.50
1	p0070-009	Vertical Short 2	Plain Carbon Steel	1927.50
2	p0070-005	Top Side	Plain Carbon Steel	1115.00
2	p0070-007	Shelf End	Plain Carbon Steel	844.40
2	p0070-006	Shelf Side	Plain Carbon Steel	980.18
2	p0070-014	Foot	Plain Carbon Steel	219.37
2	p0070-013	Leg	Plain Carbon Steel	185.57
2	p0070-015	Handle	Plain Carbon Steel	299.84
2	p0070-016	Handle End Cap	Plain Carbon Steel	14.44
2	p0070-017	Wheel - 200mm (8 inch)		
2	p0070-022	Ply Side	Plywood	253.33
1	p0070-019	Top Shelf	Plain Carbon Steel	1749.32
2	p0070-020	Top Shelf	Plain Carbon Steel	1716.00
1	p0070-021	Cylinder Floor	Plain Carbon Steel	799.66



**DISCLAIMER:**

I have build these racks and have used them without a problem.

Be warned that I am not an engineer and there has been very little in the way of strength analysis done on this. It is all eyeball engineering.

I provide the plans as an example of something that has worked for me. They are provided for educational purposes only. I want to stress in the strongest possible terms that if you choose to build something from these plans then you do so entirely at your own risk.

Where the plans feature a "QA Date" this only means that I have actually built the item in the plans and completed the build on that date. It does **NOT** mean that the design passed any form of quality assurance.

I have no control of the quality of construction nor the modifications you may make to the design. I take no responsibility for anything you choose to do with these plans.

If you do not fully understand everything above or if you do not fully agree with it then DO NOT USE THESE PLANS.

UNLESS OTHERWISE SPECIFIED: DIMENSIONS ARE IN MILLIMETERS		FINISH: Painted		DEBUR AND BREAK SHARP EDGES		DO NOT SCALE DRAWING		REVISION A	
TOLERANCES: LINEAR: +/- 1mm ANGULAR: +/- 1degree						TITLE:  <b>Designed 2 Build</b>  <b>Welding Cart</b>			
DRAWN	NAME Merlin	DATE 2017-01-18							
Q.A	NAME Merlin	DATE 2017-01-30							
MATERIAL: Assembly		DWG NO. p0070-A07		A3					
WEIGHT: 37664.57		SCALE:1:6		SHEET 30 OF 30					

